



Why IMS Still Matters.....



Dusty Rivers

Principal Technical Architect, GT Software



#SHAREorg



SHARE is an independent volunteer-run information technology association that provides education, professional networking and industry influence.



Agenda

- Why IMS still Matters
- IMS Challenges
- IMS as Client
- Data Virtualization (With IMS???)
- IMS CPU Reduction
- A technology peek.....
- End

IMS is the system of record



IMS systems for banks
(ATM, loans,
account management)



IMS systems for insurance
(Claims &
policy management)



**IMS systems for
manufacturing**



IMS systems for finance



IMS systems for medical



IMS systems for Airline

IMS and Fortune companies

- **75%** of Fortune 1000 companies use IMS
- Thousands of companies globally use IMS
- Most users are not aware that information on their applications comes from IMS




IMS and architects

The very reliability and transparency of IMS systems can make it nearly invisible to architects.

- Not using IMS to the fullest advantage
- They are not aware they can integrate new technology with IMS data and transactions.
- They may recommend other options, not knowing they can integrate without changing the underlying IMS applications



IMS = 

Complete your session evaluations online at www.SHARE.org/Orlando-Eval

8/21/2015

Today's business needs

- Self-service, Mobile/Cloud, BYOD, BI/BA, IoT
- Real-time access to enterprise data residing on any platform
- Customer and business focused IT (360 degree view)
- Build and deploy apps rapidly (**App** Mentality)
- Integration between IMS & distributed systems
- Big Data (**IMS?**)
- Data Virtualization(???)



IMS Complexity?

- Conversational Transactions
- Multiple Segment Output Messages
- IMS as Client



Conversational Transactions

Conversational transactions

Conversational transaction processing allows you to retain message continuity from a given terminal, even when the program that processes the conversation is not retained in storage throughout that conversation.

Conversational Transactions

Conversational transactions

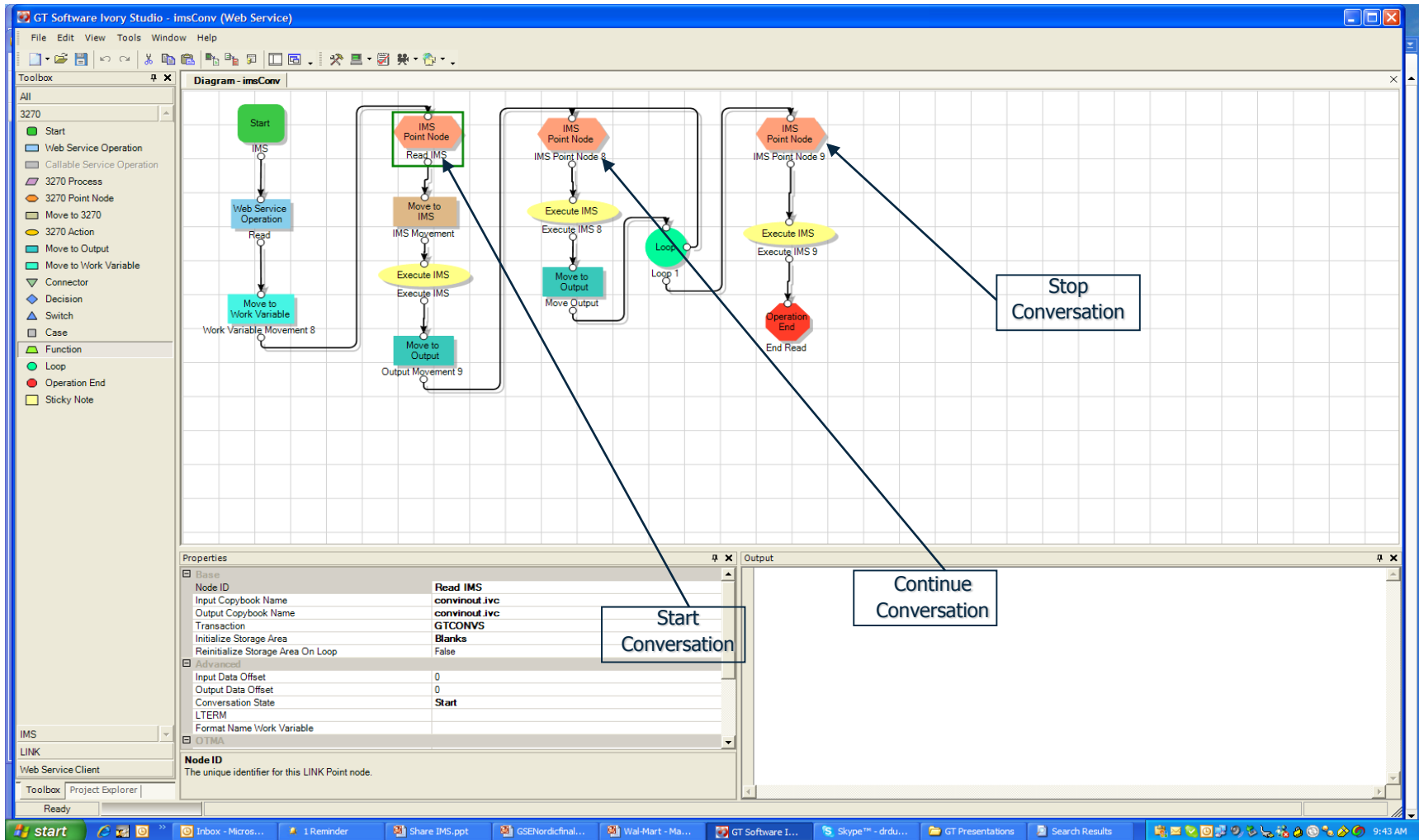
Conversational transaction processing allows you to retain **message continuity** from a given **terminal**, even when the program that processes the conversation is not retained in **storage** throughout that conversation.

- Message Continuity?
- Terminal?
- Conversations?
- Storage?

Conversational Transactions

- [illegible]

IMS Conversational Tran as a Service



Complete your session evaluations online at www.SHARE.org/Orlando-Eval

Multiple Segment Output Transactions

- Run transaction
- Get first screen of output
- PA1 through pages, or get logical pages

- Issues ?

Multiple Segment Output Transactions

Input

LLZZ	DATA
------	------

Output

LLZZ	DATA
------	------

Multiple Segment Output Transactions

Input

LLZZ	DATA
------	------

Output

LLZZ	DATA
LLZZ	DATA
LLZZ	DATA
LLZZ	DATA
LLZZ	DATA
LLZZ	DATA
LLZZ	DATA
LLZZ	DATA

Multiple Segment Output Transactions

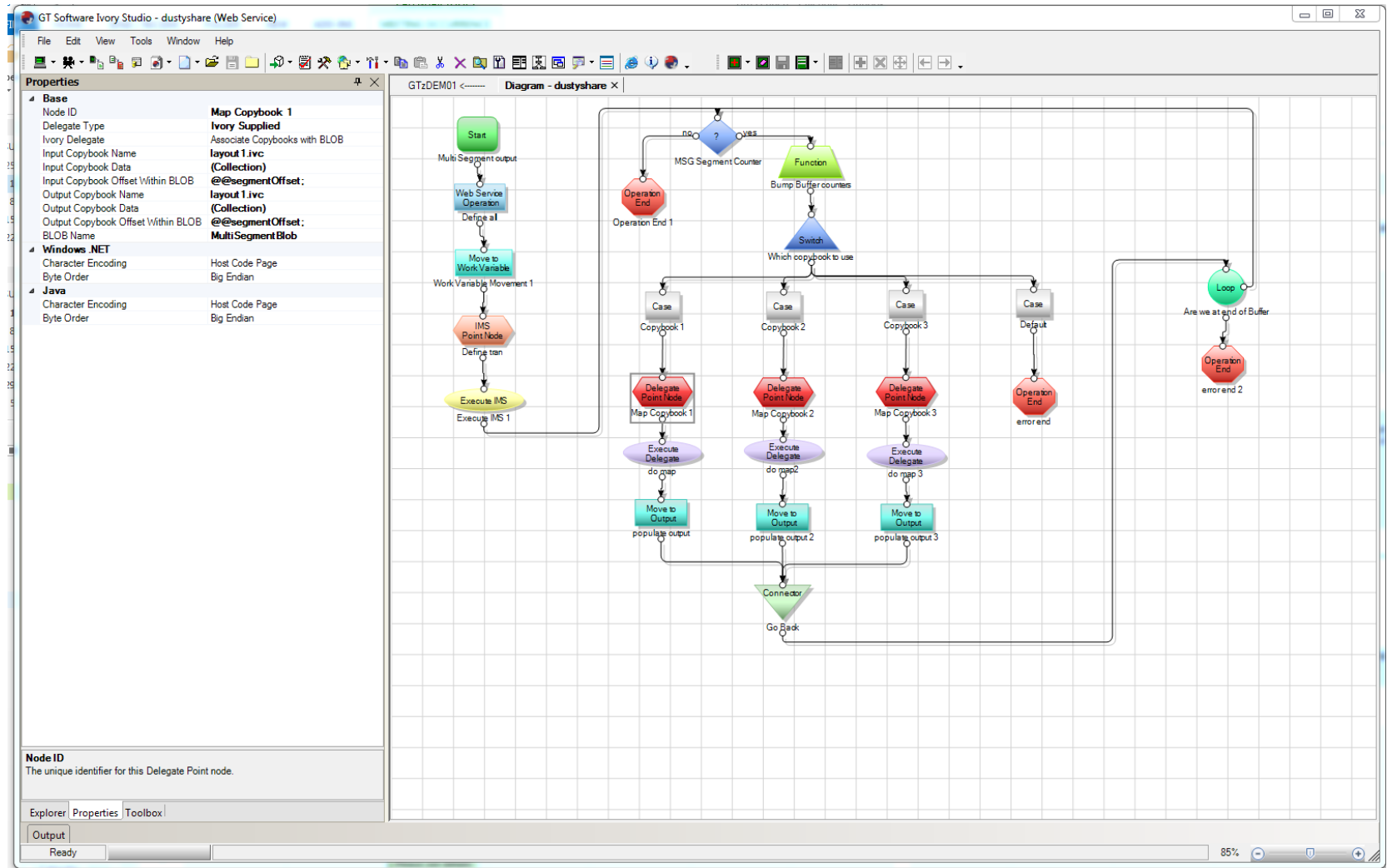
Input

LLZZ	DATA
------	------

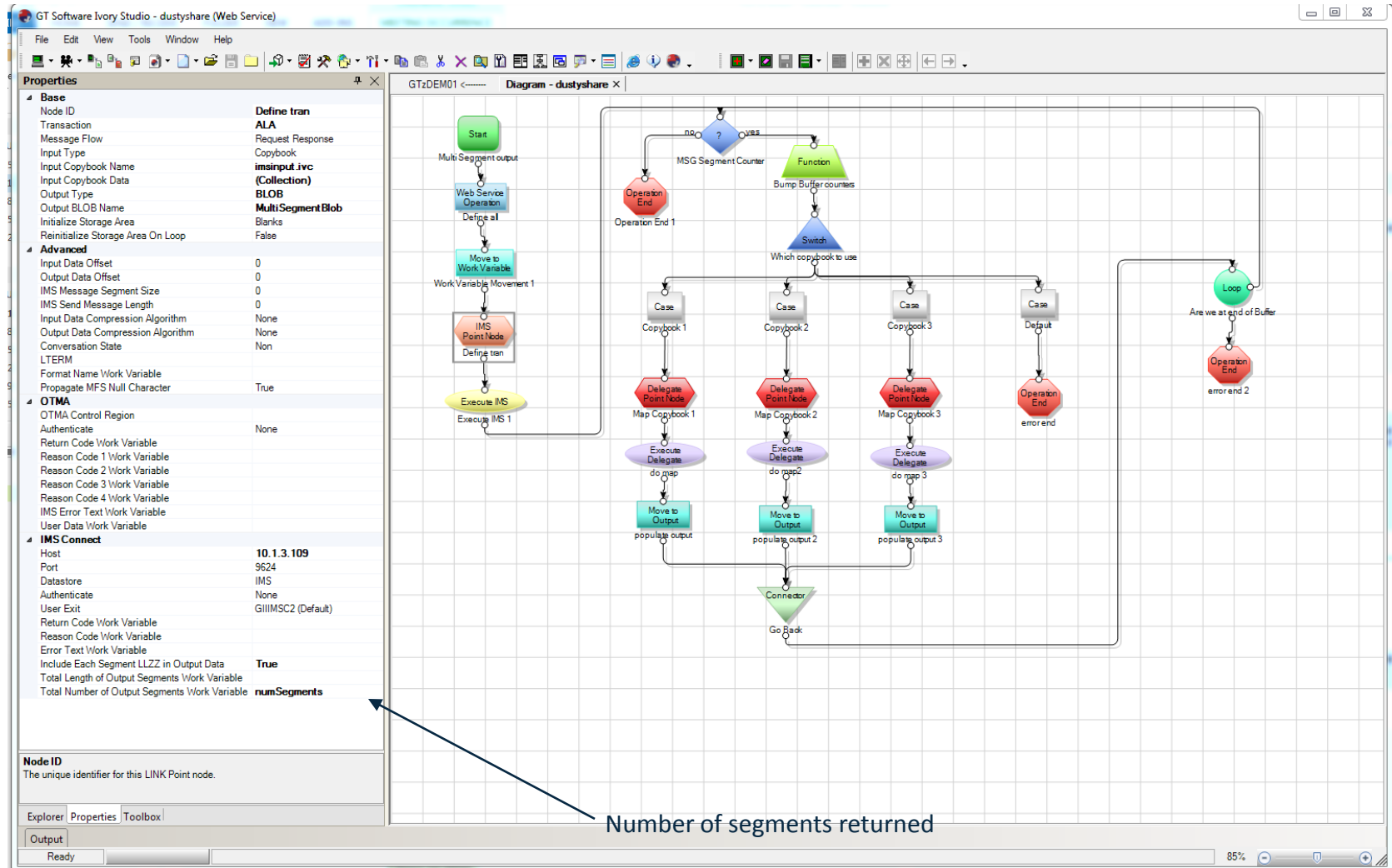
Output

LLZZ	DATA
LLZZ	DATA
LLZZ	DATA
LLZZ	DATA
LLZZ	DATA
LLZZ	DATA
LLZZ	DATA
LLZZ	DATA

Multiple Segment Output Transactions



Multiple Segment Output Transactions



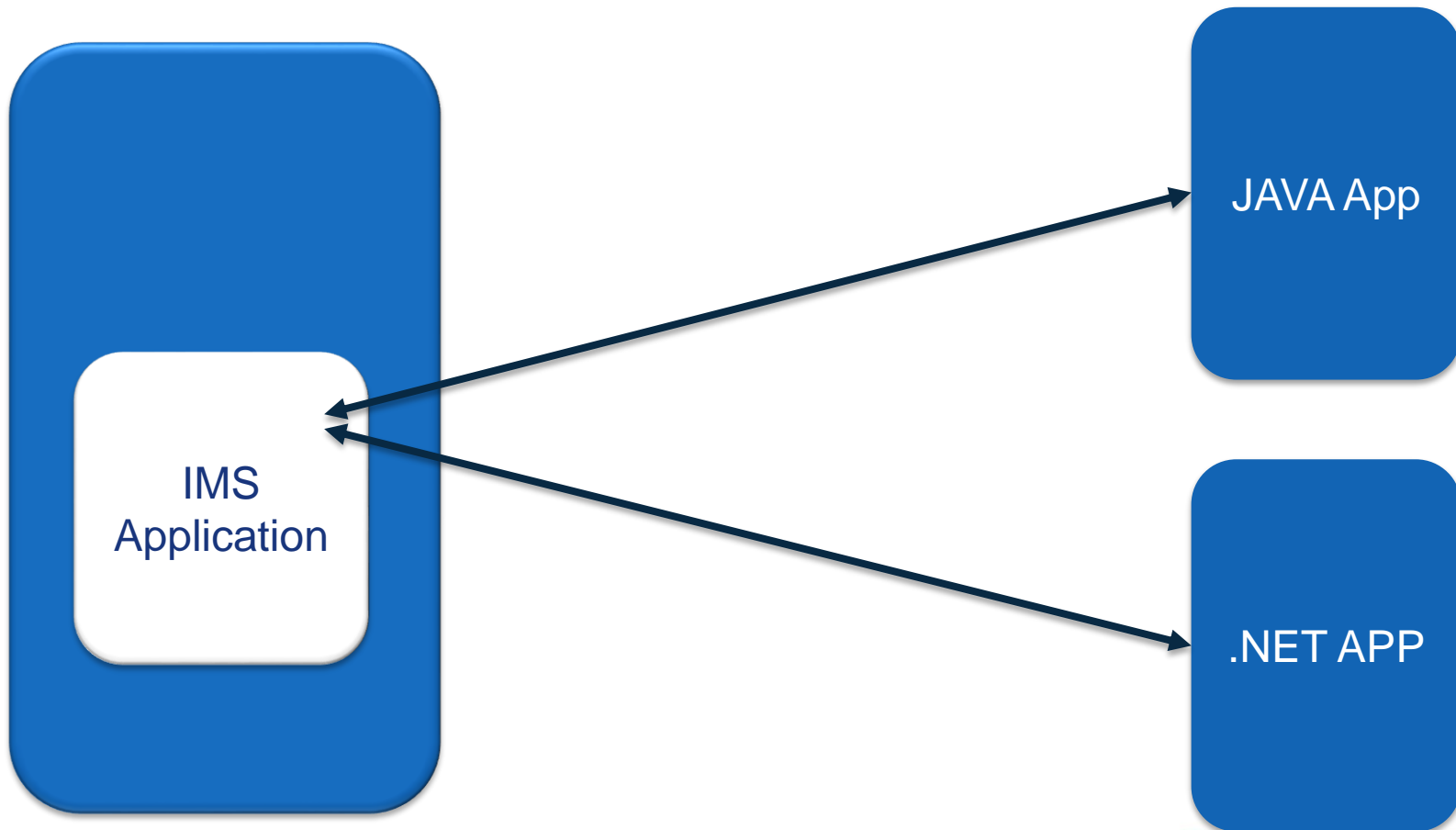
IMS as a client

- IMS applications talking to distributed applications

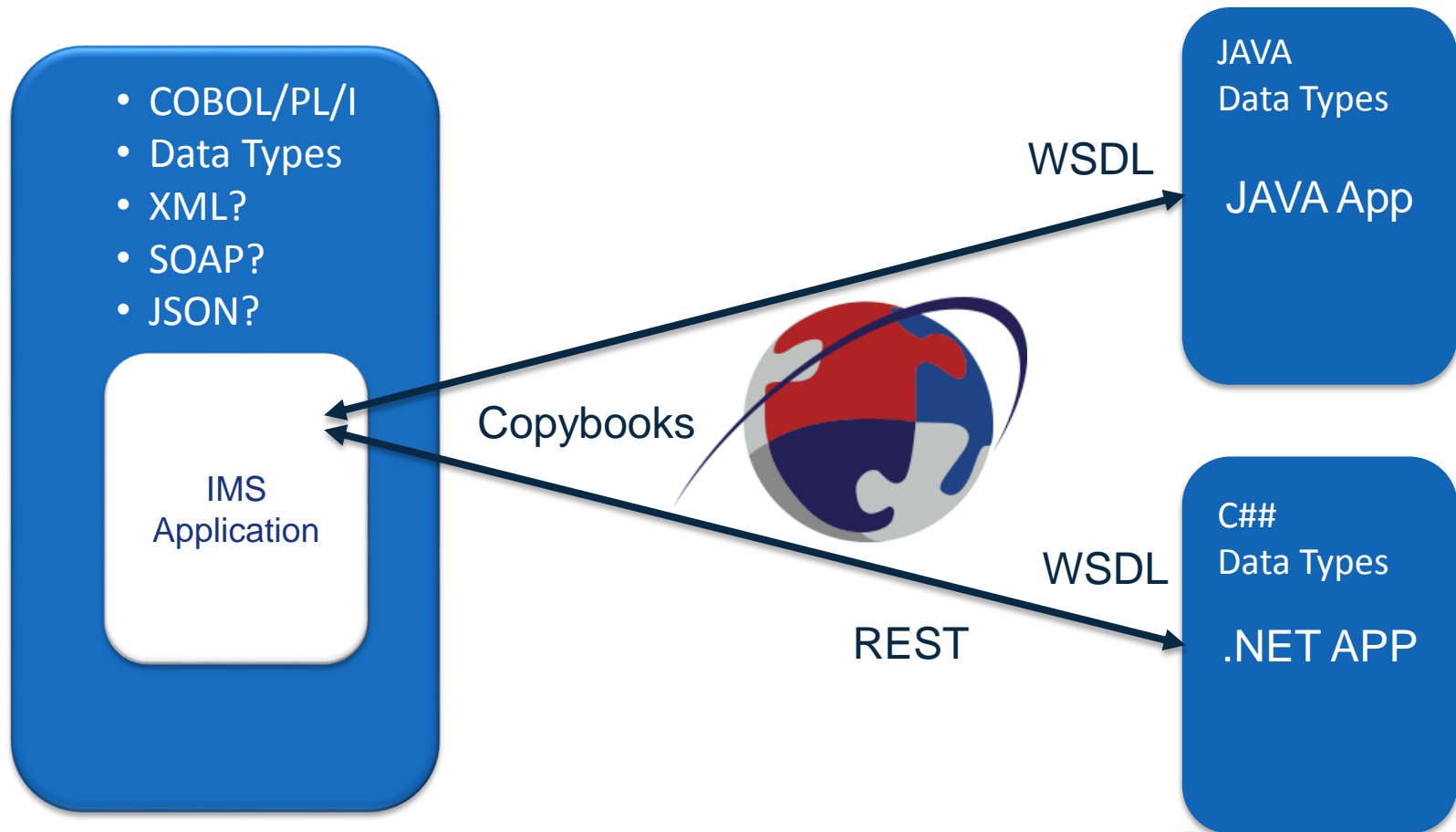


- IMS Applications calling mobile or cloud applications
- IMS Applications calling in native language (COBOL, PL/1)
- IMS Application does not worry about XML/SOAP
- IMS Application can be orchestrated

IMS talking to distributed apps



IMS talking to distributed apps

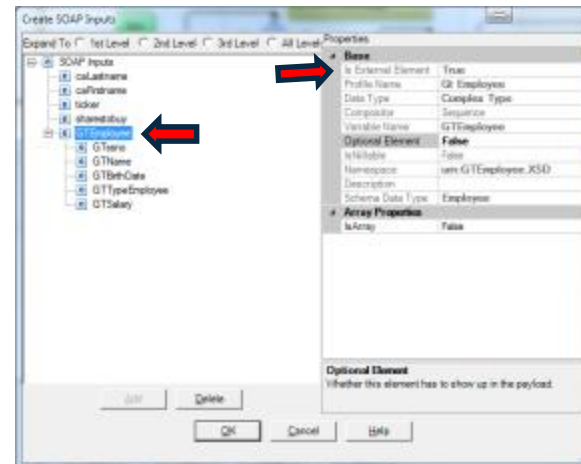
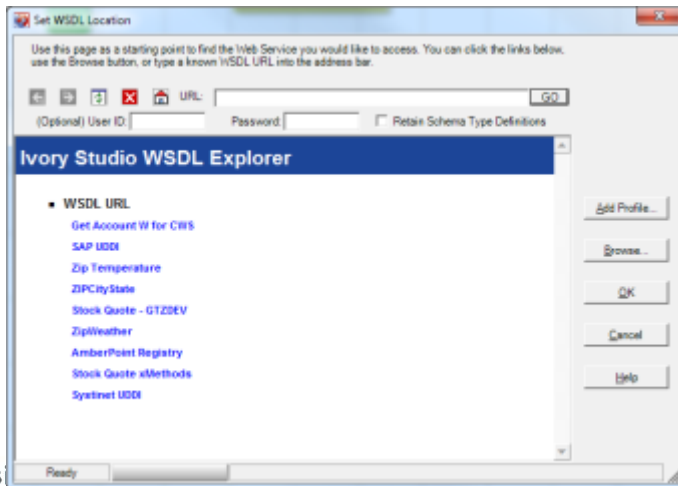
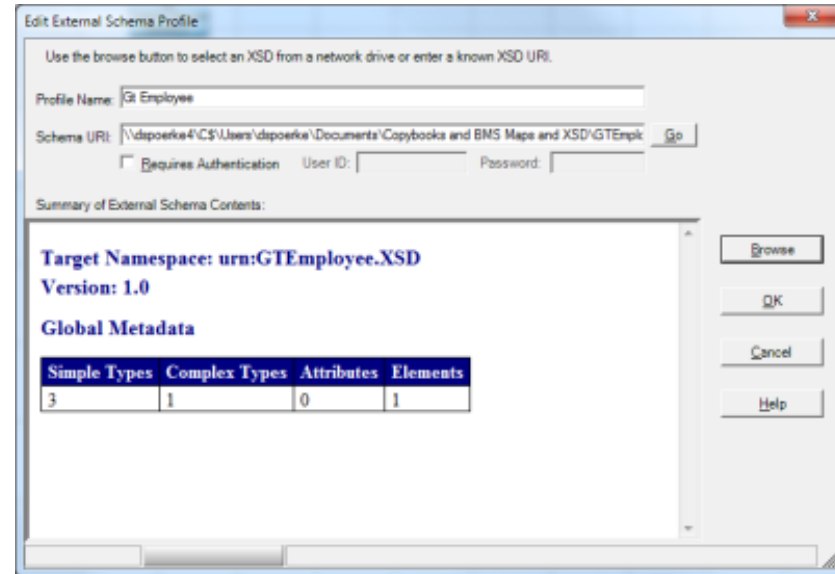
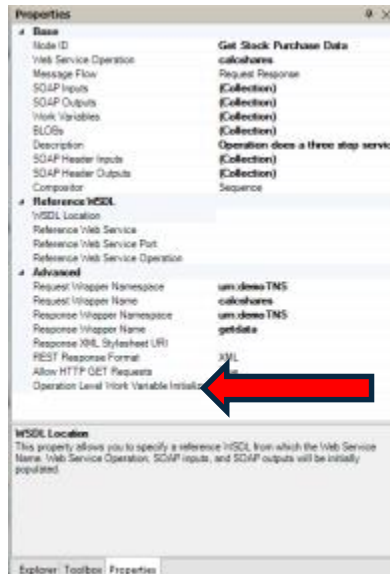


IMS applications in native language

IMS applications calling in native language (COBOL,PL/1)

- No new COBOL XML Coding
- No knowledge of SOAP or XML required
- Communication in native language(looks like subroutine call)
- Must be easy to create interface from IMS
- Must be Secure (SSL,AT-TLS, WS-*.....)
- No requirement for ICAL

Schema, WSDL & more



Complete your session

in Orlando 2015



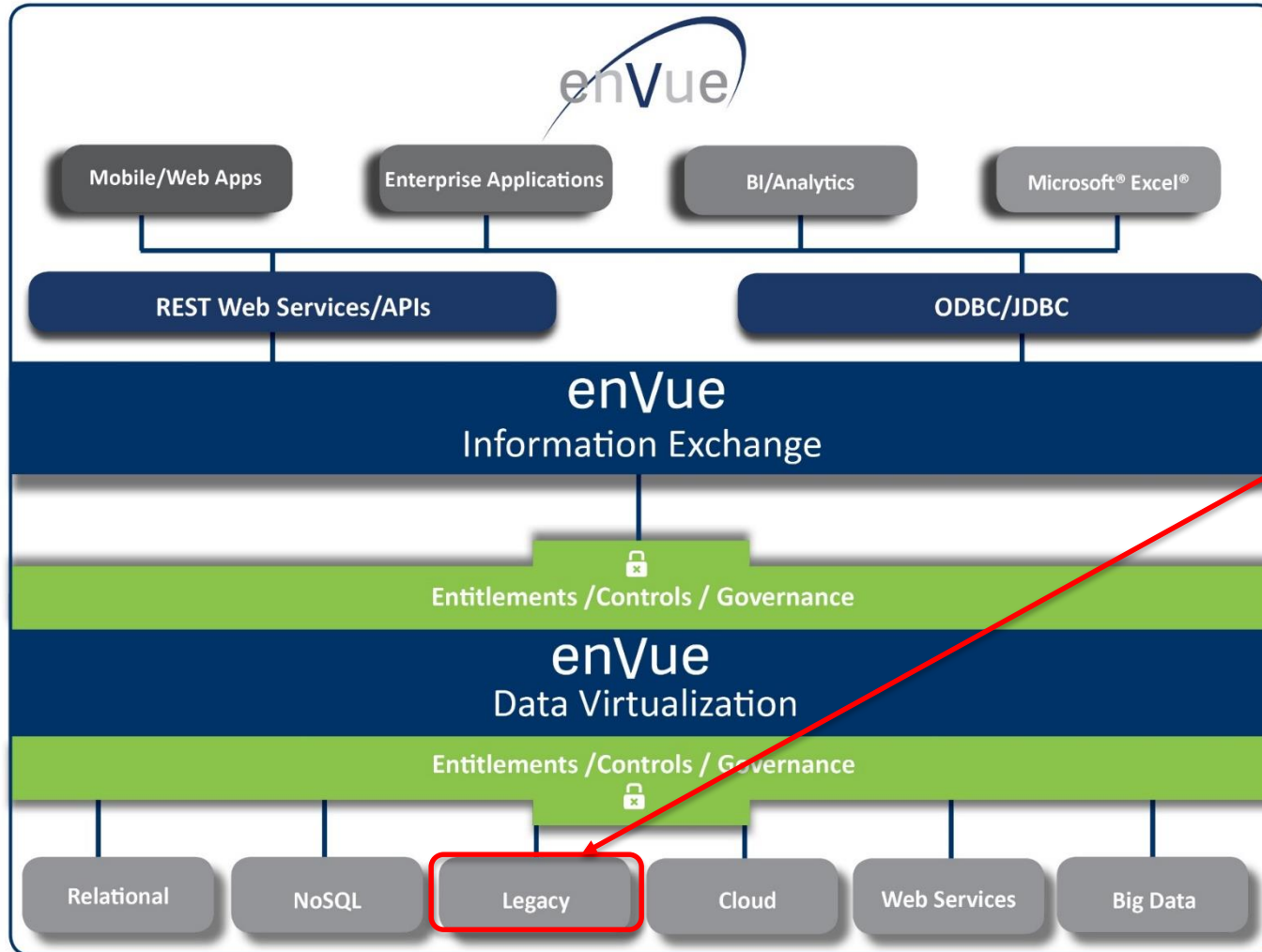
Ivory callable service wizard

- Imports WSDL from distributed service
- No knowledge of SOAP or XML required
- Generates the required COBOL/PL/I Artifacts
- Creates a project to handle delivery and transformation
- Generates a sample routine to guide the user
- No other software required
- Minutes instead of days

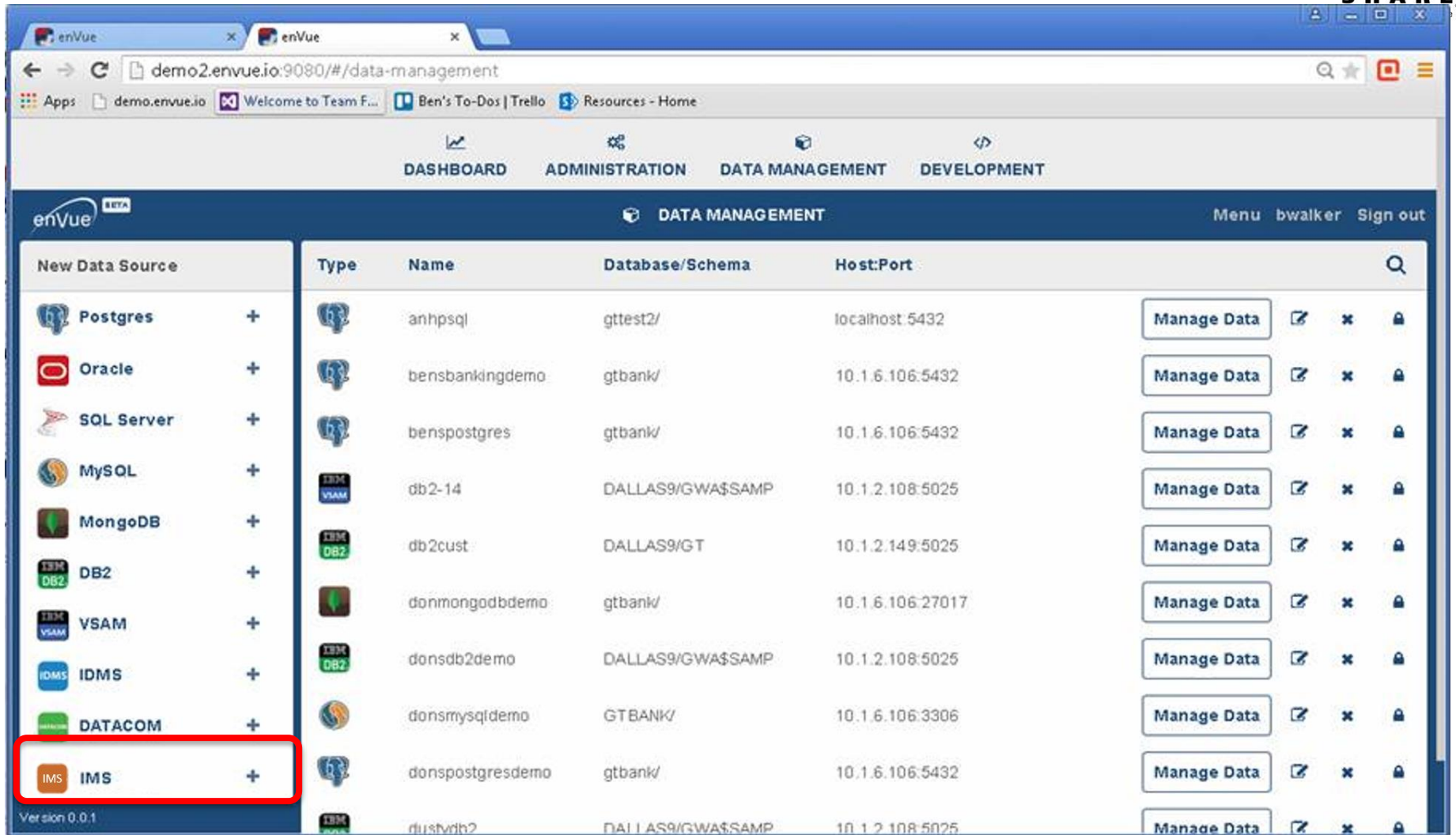


Data Virtualization.....

Data Virtualization *provides simplified, integrated access to all data sources available throughout the enterprise. It allows for the retrieval and manipulation of the data regardless of structure or location. And, because the data never leaves its original location, there is no risk of data errors, version control issues or time delays*



IMS
DB2
VSAM
IDMS/DB
DATACOM



enVue BETA **DATA MANAGEMENT** Menu bwalker Sign out

New Data Source

- Postgres +
- Oracle +
- SQL Server +
- MySQL +
- MongoDB +
- DB2 +
- VSAM +
- IDMS +
- DATAKOM +
- IMS +**

Version 0.0.1

Type	Name	Database/Schema	Host:Port	Actions
Postgres	anhpsql	gttest2/	localhost:5432	Manage Data ✎ ✕ 🔒
Postgres	bensbankingdemo	gtbank/	10.1.6.106:5432	Manage Data ✎ ✕ 🔒
Postgres	benspostgres	gtbank/	10.1.6.106:5432	Manage Data ✎ ✕ 🔒
DB2	db2-14	DALLAS9/GWA\$SAMP	10.1.2.108:5025	Manage Data ✎ ✕ 🔒
DB2	db2cust	DALLAS9/GT	10.1.2.149:5025	Manage Data ✎ ✕ 🔒
MongoDB	donmongobdemo	gtbank/	10.1.6.106:27017	Manage Data ✎ ✕ 🔒
DB2	donsdb2demo	DALLAS9/GWA\$SAMP	10.1.2.108:5025	Manage Data ✎ ✕ 🔒
MySQL	donsmysqldemo	GTBANK/	10.1.6.106:3306	Manage Data ✎ ✕ 🔒
Postgres	donspostgresdemo	gtbank/	10.1.6.106:5432	Manage Data ✎ ✕ 🔒
DB2	dustvdb2	DALLAS9/GWA\$SAMP	10.1.2.108:5025	Manage Data ✎ ✕ 🔒

IMS CPU Usage Reduction.....



Complete your session evaluations online at www.SHARE.org/Orlando-Eval

IMS CPU Usage Reduction.....



Complete your session evaluations online at www.SHARE.org/Orlando-Eval

How Does It Work?



zXP is a performance enhancing technology that is focused on increasing online transaction throughput, while gaining additional benefits, namely:

- Reduced z/OS Monthly Licensing Costs
- Online transaction performance increase by up to 70%
- Simple product installation
- **No** IPL or major system configuration
- z/OS and COBOL IMS, NATURAL and HOGAN Compatible
- **NO** modification to transaction code or runtime
- **30%** Average CPU Reduction

IMS is the system of record



IMS systems for banks
(ATM, loans,
account management)



IMS systems for insurance
(Claims &
policy management)



**IMS systems for
manufacturing**



IMS systems for finance



IMS systems for medical



IMS systems for Airline

Q&A session



info@gtsoftware.com
www.gtsoftware.com

Complete your session evaluations online at www.SHARE.org/Orlando-Eval