

System Automation for z/OS: Beginner's Hands-on Lab

Ulrike Muench (Umuench@de.ibm.com)

IBM



#SHAREorg



SHARE is an independent volunteer-run information technology association
that provides **education, professional networking and industry influence.**



Copyright and Trademarks

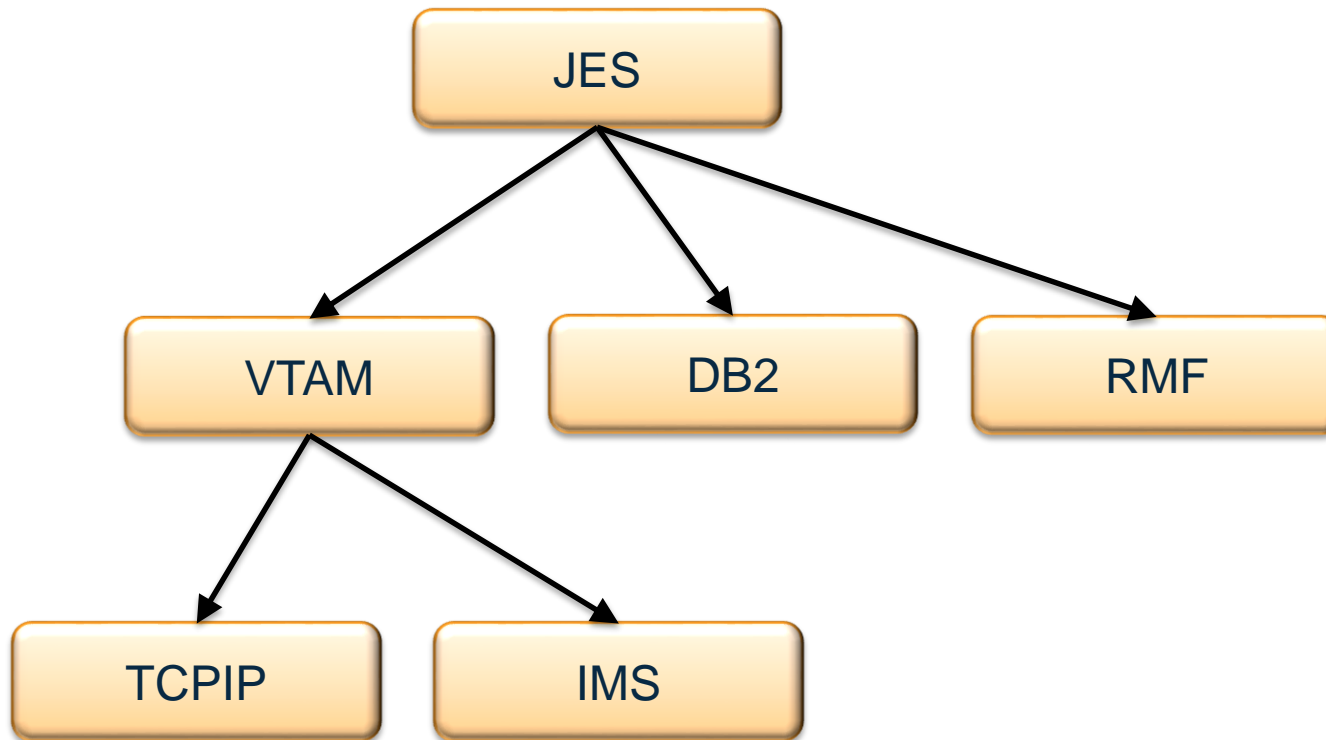
© Copyright IBM Corporation 2015
The following names are trademarks of the
IBM Corp. in USA and/or other countries
and may be used throughout this
presentation:

CICS, DB2, IBM, IMS, ITM, NetView, OMEGAMON, RMF, RACF,
S/390, Tivoli, VTAM, WebSphere, z/OS, zSeries, System z,
Linux on System z

Other company, product and service
names may be trademarks or service
marks of others.

Automation – what is it?

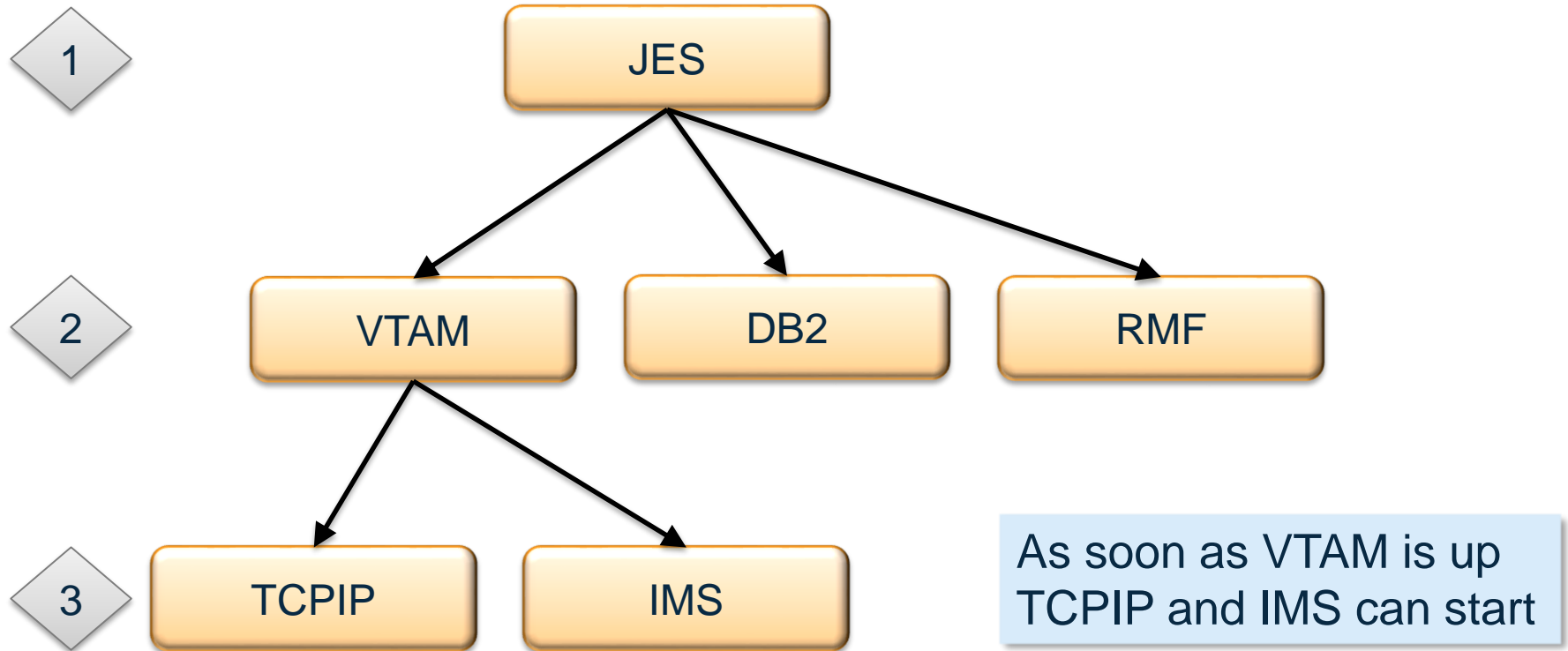
Start and Stop of Applications in correct order



Automation – what is it?

Start and Stop of Applications in correct order

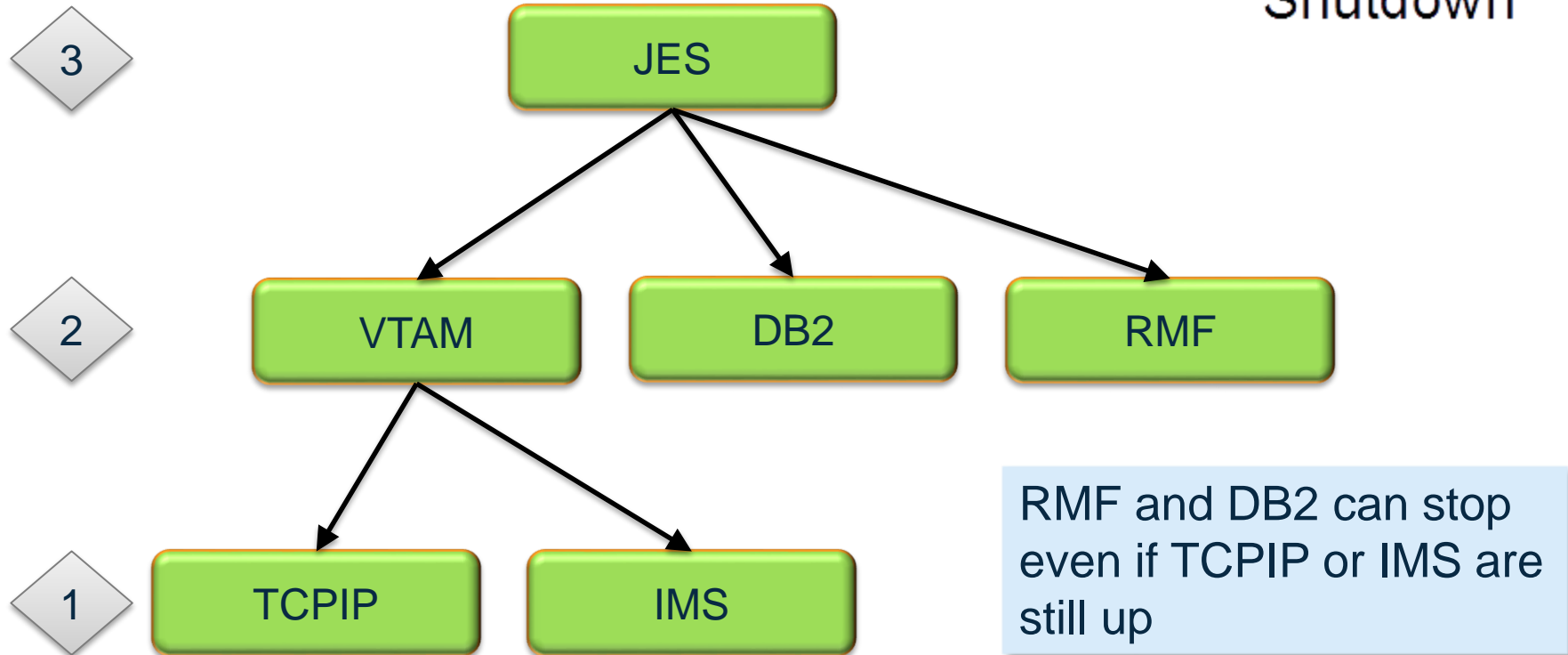
‘IPL’



Automation – what is it?

Start and Stop of Applications in correct order

Shutdown



Automation – what is it?

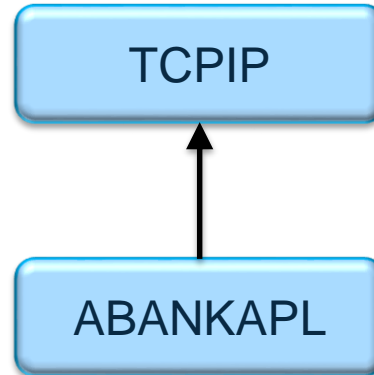
Automation needs knowledge of:

e.g. RMF

Start Command	S RMF
Stop Command	P RMF
Up Message	ERB100I
Down Message	ERB102I

Work Task – add an Application ‘ABANKAPL’ into System Automation

- Start Command
- Stop Command
- Messages
 - ACTIVE
 - UP
 - TERMINATING
 - TERMINATED



Make use of
Classes

- Dependency to other Application
- On which system runs Application



Automation Environment

```

MENU  OPTIONS  HELP

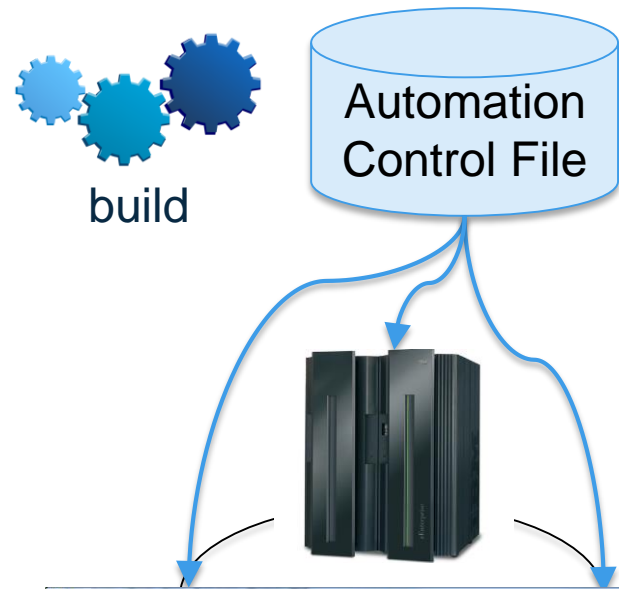
System Automation for z/OS 3.5 Customization Dialog
Option ==>

0  Settings          User parameters
BR Browse           Browse the Policy Database
1  Edit             Edit the Policy Database
2  Build            Build functions for Policy Database
3  Report           Generate reports from Policy Database
4  Policies         Maintain Policy Database list
5  Data Management Import policies into a Policy Database
U  User            User-defined selections

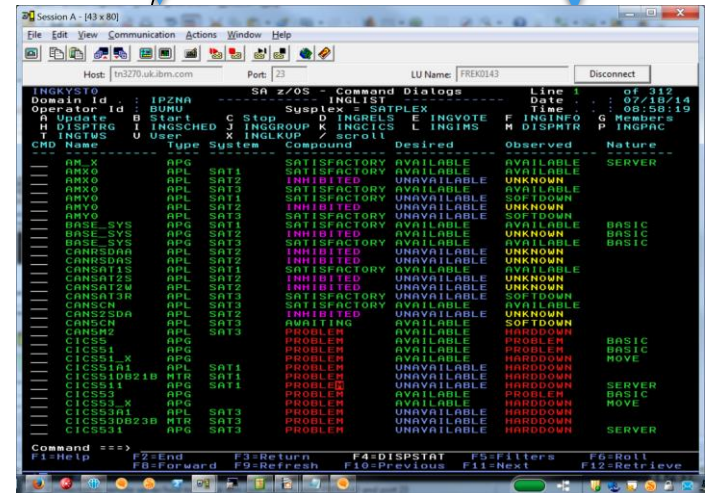
X  Exit            Terminate Customization Dialog

To switch to another Policy Database, specify the Policy Database name
in the following field, or specify a ? to get a selection list.
Current Policy Database . . . SHARE

Licensed Materials - Property of IBM
© Copyright IBM Corp. 1990, 2014
    
```



Automation policy is defined in ISPF application on TSO



Cmd Name	Type	Status	Component	Desired	Observed	Nature
APLX	APG	SAT1	SATISFACTORY	AVAILABLE	AVAILABLE	SERVER
ANK0	APL	SAT2	SATISFACTORY	AVAILABLE	AVAILABLE	SERVER
ANK0	APL	SAT3	INHIBITED	UNAVAILABLE	UNKNOWN	SERVER
ANK0	APL	SAT1	SATISFACTORY	AVAILABLE	AVAILABLE	SERVER
ANK0	APL	SAT2	INHIBITED	UNAVAILABLE	SOFTDOWN	SERVER
ANK0	APL	SAT3	SATISFACTORY	AVAILABLE	AVAILABLE	SERVER
BASE_SYS	APG	SAT1	SATISFACTORY	AVAILABLE	AVAILABLE	BASIC
BASE_SYS	APG	SAT2	INHIBITED	AVAILABLE	UNKNOWN	BASIC
CANRS0AR	APL	SAT2	INHIBITED	UNAVAILABLE	UNKNOWN	UNKNOWN
CANRS0AS	APL	SAT1	INHIBITED	UNAVAILABLE	UNKNOWN	UNKNOWN
CANSAT1S	APL	SAT1	SATISFACTORY	AVAILABLE	AVAILABLE	SERVER
CANSAT2S	APL	SAT2	INHIBITED	UNAVAILABLE	UNKNOWN	UNKNOWN
CANSAT2W	APL	SAT2	INHIBITED	UNAVAILABLE	UNKNOWN	UNKNOWN
CANSAT3R	APL	SAT3	SATISFACTORY	AVAILABLE	AVAILABLE	SERVER
CANSC0H	APL	SAT3	SATISFACTORY	AVAILABLE	AVAILABLE	SERVER
CANS2SDA	APL	SAT2	INHIBITED	UNAVAILABLE	UNKNOWN	UNKNOWN
CANSC0H	APL	SAT3	INHIBITED	UNAVAILABLE	SOFTDOWN	SERVER
CANS02	APL	SAT3	PROBLEM	AVAILABLE	HARDDOWN	SERVER
CICSS5	APG		PROBLEM	AVAILABLE	PROBLEM	BASIC
CICSS1	APG		PROBLEM	AVAILABLE	PROBLEM	BASIC
CICSS1X	APG		PROBLEM	AVAILABLE	PROBLEM	MOVE
CICSS1A1	APL	SAT1	PROBLEM	UNAVAILABLE	HARDDOWN	SERVER
CICSS10B21B	RTR	SAT1	PROBLEM	UNAVAILABLE	HARDDOWN	SERVER
CICSS11	APG	SAT1	PROBLEM	AVAILABLE	PROBLEM	BASIC
CICSS3	APG		PROBLEM	AVAILABLE	PROBLEM	BASIC
CICSS3X	APG		PROBLEM	AVAILABLE	PROBLEM	MOVE
CICSS3A1	APL	SAT3	PROBLEM	UNAVAILABLE	HARDDOWN	SERVER
CICSS3023B	RTR	SAT3	PROBLEM	UNAVAILABLE	HARDDOWN	SERVER
CICSS31	APG	SAT3	PROBLEM	UNAVAILABLE	HARDDOWN	SERVER

Automation operation is performed in NetView environment

Creating and Editing Automation Policies

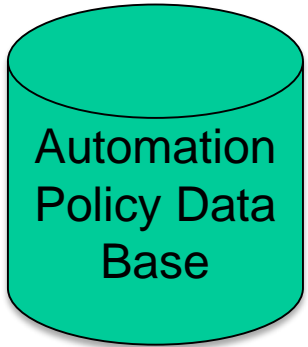
```

MENU  OPTIONS  HELP
-----
System Automation for z/OS 3.5 Customization Dialog
Option ==>

0  Settings          User parameters
BR Browse           Browse the Policy Database
1  Edit              Edit the Policy Database
2  Build             Build functions for Policy Database
3  Report            Generate reports from Policy Database
4  Policies          Maintain Policy Database list
5  Data Management  Import policies into a Policy Database
U  User              User-defined selections
X  Exit             Terminate Customization Dialog

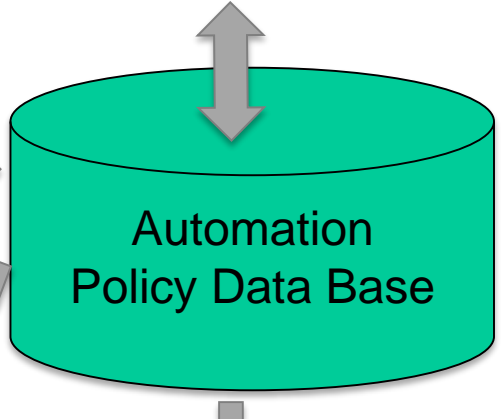
To switch to another Policy Database, specify the Policy Database name
in the following field, or specify a ? to get a selection list.
Current Policy Database . . . SHARE

Licensed Materials - Property of IBM
© Copyright IBM Corp. 1990, 2014
  
```



Import

Import

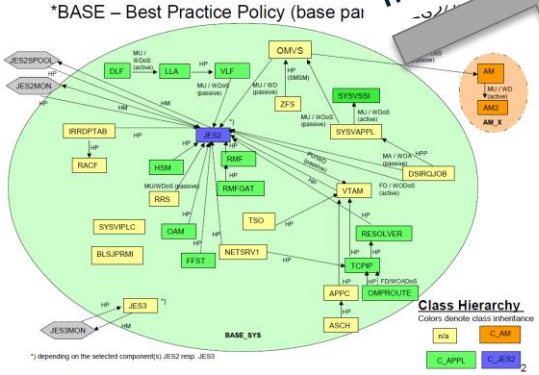


Bulk updates

Create Report



Build Process



Applications

Short Description	Class for CICS
Subsystem Name	C_CICS
Object Type	CLASS
Application Type	CICS
Last changed by	THIE

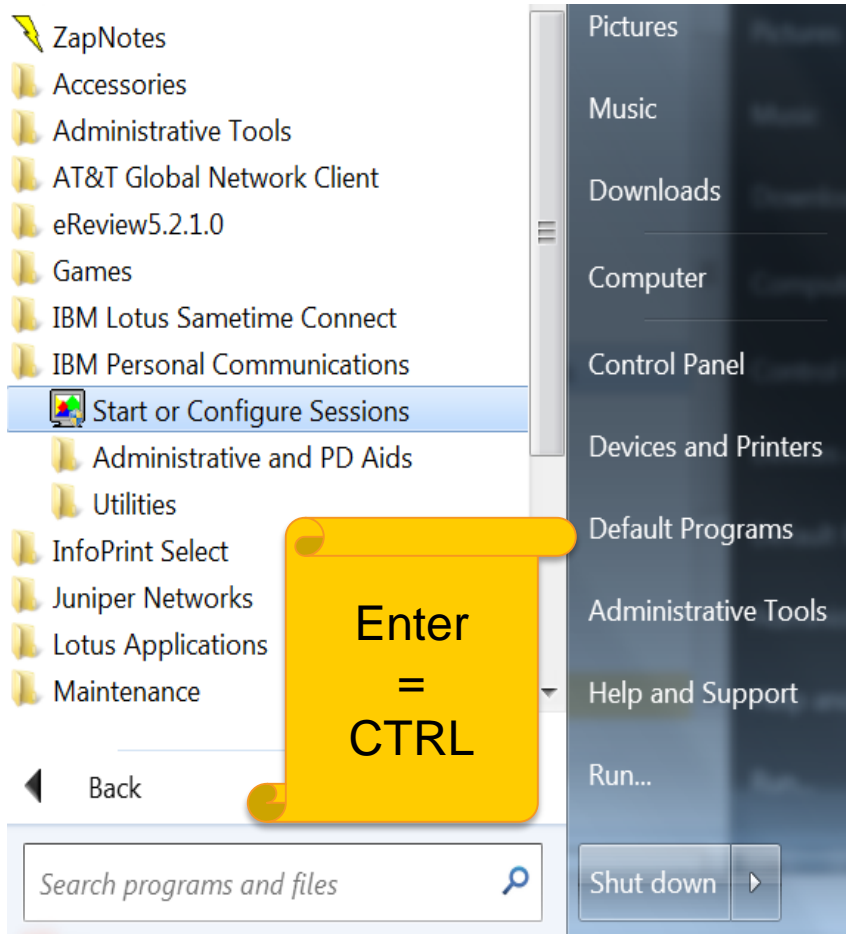
Minor resource name specification

Minor Resource Name	TRAN
---------------------	------

Messages and User Data

Message id	Description
ABCODETRAN	Transaction Abend Recovery
	Code 1 Code 2 Code 3 Value Returned
	* * * EXCLUDE
CAPMSG5	Severity definition for captured msgs
	Code 1 Code 2 Code 3 Value Returned
DFHIR3785	* * * CRITICAL
DFHLG0507	* * * CRITICAL
DFHLG0730	* * * CRITICAL

Start – All Programs – IBM Personal Communications – Start or Configure Sessions – SHARE LPAR



User ID: SHARA01 – SHARA09


Password:




TSO

- Change the Automation Policy Database and
- build the Automation Control File

NetView: ING01 - ING09

- Activate the Control file
- Test the policy definitions

IBM Knowledge Center 	Community 
Product documentation	Service Management Community

	Wiki 	Homepage 	Forum 
System Automation for z/OS	Wiki SA z/OS	Homepage SA z/OS	Forum SA z/OS on developerWorks
Service Management Suite for z/OS	Wiki SMSz	Announcement SMSz	Forum SMSz on developerWorks

Thank
You

Complete your session evaluations online at www.SHARE.org/Seattle-Eval