

# SDSF – Beyond the Basics

*Bruce Koss  
Wells Fargo*

*Monday, March 2, 2015  
4:30 PM - 5:30 PM  
16604*

[www.SHARE.org](http://www.SHARE.org)



#SHAREorg



SHARE is an independent volunteer-run information technology association that provides **education, professional networking and industry influence.**



# Introduction

- Demonstrate how to
  - Configure and personalize SDSF
  - Execute SDSF in batch jobs
  - Code SDSF REXX programs
- Links to SDSF presentations and manuals at end of this document
  - To open a link in a new browser window
    - Hold down the **SHIFT** key and click on the link
- Acronyms
  - Interactive System Productivity Facility (ISPF)
  - Restructured Extended Executor Language (REXX)
  - System Display and Search Facility (SDSF)

# Agenda

Subject	Topics
<a href="#">Overview</a>	<a href="#">ISPF vs. TSO</a> , <a href="#">Panels</a>
<a href="#">NP Commands</a>	<a href="#">NP Column</a> , <a href="#">NP Commands</a> , <a href="#">NP Example</a>
<a href="#">Primary Commands</a>	<a href="#">KEYS</a> , <a href="#">?</a> , <a href="#">SET ACTION</a> , <a href="#">SET DISPLAY</a> , <a href="#">PREFIX</a> , <a href="#">OWNER</a> , <a href="#">S</a> , <a href="#">SYSNAME</a> , <a href="#">ARRANGE</a> , <a href="#">FILTER</a> , <a href="#">SORT</a> , <a href="#">SEARCH</a> , <a href="#">WHO</a>
<a href="#">LOG</a>	<a href="#">OPERLOG vs. SYSLOG</a> , <a href="#">LOG OPERLOG</a> , <a href="#">LOG SYSLOG</a> , <a href="#">SYSID</a> , <a href="#">ACTION</a> , <a href="#">FINDLIM</a> , <a href="#">LOCATE</a> , <a href="#">SET DATE</a> , <a href="#">FILTER</a> , <a href="#">PRINT</a> , <a href="#">/</a> , <a href="#">SET DELEAY</a> , <a href="#">SET CONSOLE</a> , <a href="#">SET CONMOD</a>
<a href="#">Batch</a>	<a href="#">Status of Jobs</a> , <a href="#">LOG</a> , <a href="#">ULOG</a>
<a href="#">REXX</a>	<a href="#">REXXHELP</a> , <a href="#">COLSHELP</a> , <a href="#">ULOG</a> , <a href="#">DA ALL</a>
<a href="#">Links</a>	<a href="#">Manuals</a> , <a href="#">SHARE</a> , <a href="#">Websites</a>

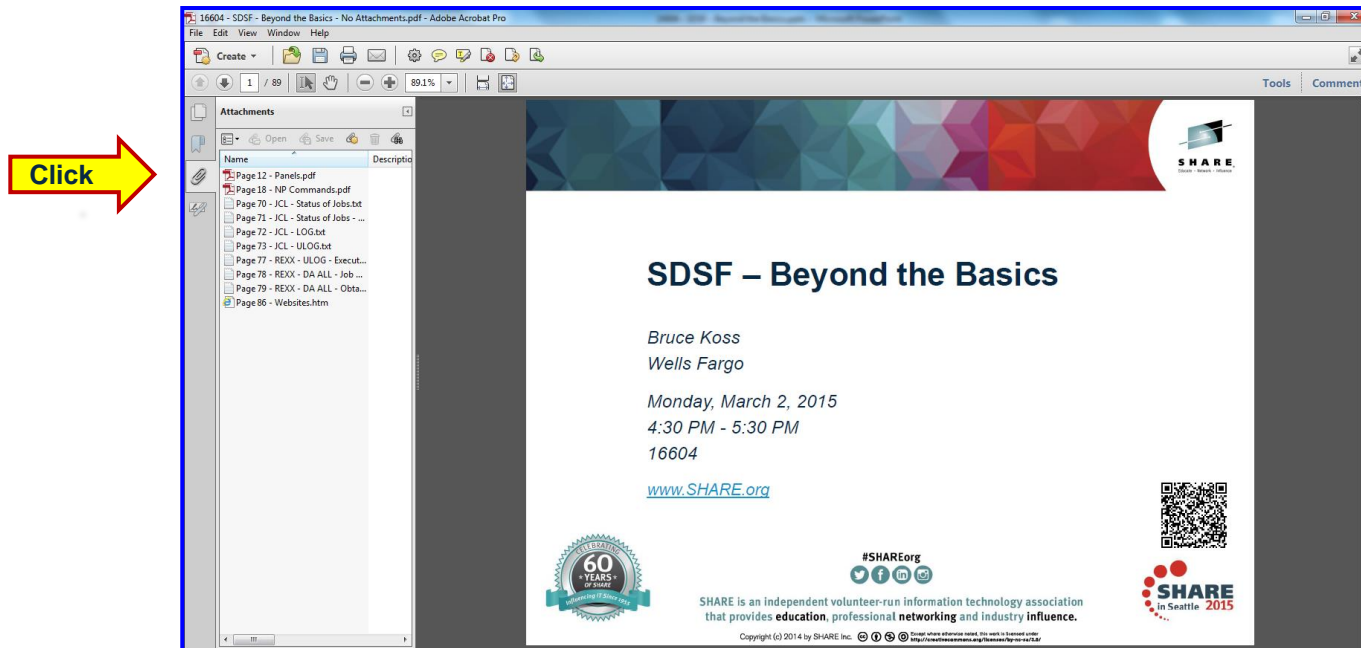
# Attachments ( )

- The following attachments are included in this document:

File	Type
Page 12 – Panels	PDF
Page 18 – NP Commands	PDF
Page 70 – JCL – Status of Jobs	TXT
Page 71 – JCL – Status of Jobs – JESMSGLOG	TXT
Page 72 – JCL – LOG	TXT
Page 73 – JCL – ULOG	TXT
Page 77 – REXX – ULOG – Execute MVS Cmd	TXT
Page 78 – REXX – DA ALL – Job Name and Lpar	TXT
Page 79 – REXX – DA ALL – Obtain STC File	TXT
Page 86 – Websites	HTM

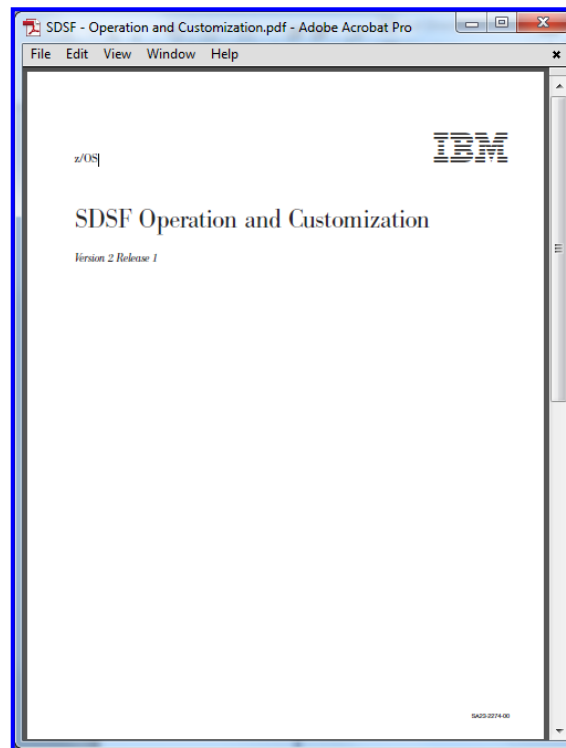
# Attachments (📎)

- Invoke Adobe Reader and click the 'Attachments' button on the left side of the navigational panel of the main Reader window




# SDSF – Users Guide?

- SDSF only has one manual, 'Operation and Customization', there is no 'Users Guide'



# Disclaimers

- Must use Adobe Reader to view attachments
  - (  ) signifies attachment
- May need to adjust the Adobe Reader zoom value to view text
- SDSF commands and screens may be slightly different depending on the operating system's version and release level
  - These commands and screen prints were executed on z/OS V2R1
- Security may prevent access to panels or executing commands
- Does not cover all SDSF and SDSF REXX commands
- Does not contain information on the SDSF Action Bar
- Limited information on JES3, mostly JES2

# Overview



# ISPF vs. TSO

---

- ISPF
  - From the ISPF menu, select SDSF
  - The action bar is displayed at the top of screen
  - Can save customization of environment
- TSO
  - From the **TSO READY** screen, type in **SDSF**
    - Or from within ISPF, type in **TSO SDSF**
  - No action bar at the top of screen
  - Can NOT save customization of environment

# SDSF – ISPF

- From the ISPF menu, select SDSF
  - The action bar is displayed at the top of screen
  - Can save customization of environment

```
Display Filter View Print Options Search Help
-----
HGX7780 ----- SDSF PRIMARY OPTION MENU -----
COMMAND INPUT ==> _____ SCROLL ==> CSR_

DA   Active users           INIT  Initiators
I    Input queue           PR    Printers
O    Output queue         PUN   Punches
H    Held output queue    RDR   Readers
ST   Status of jobs       LINE  Lines
                                NODE  Nodes
LOG  System log          SO    Spool offload
SR   System requests     SP    Spool volumes
MAS  Members in the MAS  NS    Network servers
JC   Job classes         NC    Network connections
SE   Scheduling environments
RES  WLM resources       RM    Resource monitor

Licensed Materials - Property of IBM

5694-A01 Copyright IBM Corp. 1981, 2011. All rights reserved.
US Government Users Restricted Rights - Use, duplication or
disclosure restricted by GSA ADP Schedule Contract with IBM Corp.
```

# SDSF – TSO

- From within ISPF, type in **TSO SDSF**
  - No action bar at the top of screen
  - Can NOT save customization of environment

```
HQX7780 ----- SDSF PRIMARY OPTION MENU -----
COMMAND INPUT ==> _____ SCROLL ==> PAGE

DA   Active users           INIT  Initiators
I    Input queue           PR    Printers
O    Output queue          PUN   Punches
H    Held output queue     RDR   Readers
ST   Status of jobs        LINE  Lines
                                     NODE  Nodes
LOG  System log            SO    Spool offload
SR   System requests       SP    Spool volumes
MAS  Members in the MAS    NS    Network servers
JC   Job classes           NC    Network connections
SE   Scheduling environments
RES  WLM resources         RM    Resource monitor
ENC  Enclaves              CK    Health checker
PS   Processes

Licensed Materials - Property of IBM

5694-A01 Copyright IBM Corp. 1981, 2011. All rights reserved.
US Government Users Restricted Rights - Use, duplication or
disclosure restricted by GSA ADP Schedule Contract with IBM Corp.
```

# Panels ( )

Option	Subject	Description
CK	Health Checker	Display information from IBM Health Checker for z/OS about the active checks
CKH	Health Check History	Display instances of a check when the “L” command is typed next to a specific health check from the CK panel
DA	Display Active Users	Display information about MVS address spaces (jobs, started tasks and TSO users) that are running
ENC	Enclaves	Display WLM enclaves
H	Held Output Queue	Display information about SYSOUT data sets for jobs, started tasks and TSO users on any held JES output queue
I	Input Queue	Display information about jobs that are on the JES input queue or that are executing
INIT	Initiators	Display information about JES-managed and WLM-managed initiators
JC	Job Classes	Display and control the job classes in the JES2 MAS or JES3 JESPLEX
?	Job Data Sets	Display information about SYSOUT data sets for selected jobs, started tasks and TSO users. When the JDS panel is accessed from the DA, I, or ST panel, the values for all the columns are obtained from the spool data set. When the JDS panel is accessed from the H or O panel, the values for some columns are obtained from in-storage control blocks
JP (MAS)	JESPLEX	Display and control the members in a JES3 JESPLEX. Will display the Multi-Access Spool (MAS) panel when executed in a JES2 environment

# Panels ( )

Option	Subject	Description
LI	Lines	Display information about JES lines and their associated transmitters and receivers
MAS (JP)	Multi-Access Spool	Display and control the members in a JES2 MAS
NC	Network Connections	Display information about JES networking connections to an adjacent node
NO	Nodes	Display information about JES nodes
NS	Network Servers	Display information about JES server-type networking devices on the node
O	Output Queue	Display information about SYSOUT data sets for jobs, started tasks and TSO users on any nonheld JES output queue
OD	Output Descriptors	Display JES output descriptors. In a JES2 environment, columns can be overtyped only if you accessed the OD panel from the O or H panel, or from a JDS panel that was accessed from the O or H panel. When you overtype a column on the OD panel, the change applies to all data sets for that group
PR	Printers	Display information about JES printers and jobs being printed
PS	Process	Display information about z/OS UNIX System Services processes
PUN	Punches	Display information about JES punches and jobs being punched
RDR	Readers	Display information about JES readers and jobs being processed by readers
RES	WLM Resources	Display information about WLM resources in the sysplex or a scheduling environment (R from the SE panel)
RM	Resource Monitor	Display information about JES2 resources

# Panels ( )

Option	Subject	Description
SE	Scheduling Environments	Display information about scheduling environments
SO	Spool Offload	Display information about JES2 spool offloaders and their associated transmitters and receivers
SP	Spool Volumes	Display and control JES spool volumes
SR	System Requests	Display information about reply and action messages
ST	Status of Jobs	Display information about jobs, started tasks and TSO users on the JES queues

# NP Commands

# NP Column

- What does the “NP” column mean?
  - Possibly “Non-Protected” or “iNPut” field
  - The answer is not documented anywhere in the SDSF manuals which refer to NP commands as action characters

```
Display Filter View Print Options Search Help
-----
SDSF STATUS DISPLAY ALL CLASSES LINE 1-19 (1011)
COMMAND INPUT ==> SCROLL ==> CSR_
NP JOBNAME JobID Owner Prty Queue C Pos Saff ASys Status
R2223@LC J0002584 SSPBATC 15 EXECUTION R HOLD
R2223@LC J0002585 SSPBATC 15 EXECUTION R HOLD
R2223@LC J0002586 SSPBATC 15 EXECUTION R HOLD
R2027DEV J0008943 R2027 15 EXECUTION R
R2255YZL J0046727 R2255 15 EXECUTION R HOLD
RPRD002 J0092111 SSPBATC 15 EXECUTION R HOLD
RUSR002 J0096643 R1800 15 EXECUTION R HOLD
R2339D28 J0061422 R2339 15 EXECUTION R 1
@PDSM18 J0077694 R2379 15 EXECUTION S 1
XSAHCR J0063114 RB107 15 EXECUTION X HOLD
R1643 T0081783 R1643 15 EXECUTION DV27 DV27
R9992 T0081786 R9992 15 EXECUTION DV27 DV27
R9988 T0081818 R9988 15 EXECUTION DV27 DV27
R6895 T0081829 R6895 15 EXECUTION DV27 DV27
R2247 T0081837 R2247 15 EXECUTION DV27 DV27
R9984 T0081846 R9984 15 EXECUTION DV27 DV27
R2255 T0081854 R2255 15 EXECUTION DV27 DV27
RW849 T0081860 RW849 15 EXECUTION DV27 DV27
R9993 T0081862 R9993 15 EXECUTION DV27 DV27
```



# NP Commands

- The next few slides list all NP commands in alphabetical order and
  - SDSF action or MVS/JES2 commands being issued
  - Valid panels
  - Command level
- Command Level
  - Distinguishes the security access required when using ISFPARMS
    - Wells Fargo and other companies no longer use ISFPARMS
    - Instead, ACF2, RACF, TSS or a SAF-compliant External Security Manager (ESM) is used to control access to SDSF commands
  - Each command level is inclusive of all levels with a lower number
    - For example, a user with a command level of 3 can perform the functions requiring a command level of 3, 2, 1 and 0
- Highlighted in **yellow** are probably the most used NP commands

# NP Commands (📎)

NP Command	SDSF Action or MVS/JES2 Commands Issued	Valid Panels	Command Level
+	Expand NP column width (use RESET to reset)	All tabular panels except OD	0
//	Block command	All tabular panels except OD	0
=	Repeat command	All tabular panels except OD	0
?	List job data sets	DA, H, I, O, OD, ST	0
A	\$TO (Set output)	H, O	2
A	F (Modify activate)	CK	3
A	\$A (Release)	DA, I, ST	3
AI	SETAUTOR	SR	3
Bx	\$B (Back space)	PR, PUN	3
C	\$C (Cancel)	DA, H, I, JDS, O, ST, LI, NO, PR, PUN, RDR, SO	2
C	\$CO (Cancel)	H, O	2
C	C	NC	3
C	C (Cancel)	PS	3
C	K C	SR	3
CA	\$C,ARMRESTART	DA, I, ST	2

# NP Commands (📎)

NP Command	SDSF Action or MVS/JES2 Commands Issued	Valid Panels	Command Level
CD	\$C (Cancel, dump)	DA, I, ST	2
CDA	\$C,D,ARMRESTART	DA, I, ST	2
D	\$D (Display)	DA, I, ST, INIT, JC, LI, MAS, NC, NO, NS, PR, PUN, RDR, RM, SO, SP	1
D	D (Display)	PS, RES, SE, SR	1
D	F (Modify display)	CK	3
DA	\$D (Display)	NS	1
DC	\$D (Display)	NO	1
DL	\$D (Display)	DA, I, ST, INIT, NC, NS, PR, PUN, RDR, SP	1
DL	F (Modify display)	CK	3
DP	\$D (Display)	NO	1
DP	F (Modify display)	CK	3
DPO	F (Modify display)	CK	3
DS	\$D (Display)	NS	1
DS	F (Modify display)	CK	3

# NP Commands (📎)

NP Command	SDSF Action or MVS/JES2 Commands Issued	Valid Panels	Command Level
E	Erase output descriptors	OD	2
E	\$E (Restart)	DA, I, ST, LI, NO, PR, PUN, SO	2
E	F (Modify refresh)	CK	3
E	\$E (Restart)	NC, NS	3
E	\$E (Restart)	MAS	4
EC	\$E (Restart)	DA, I, ST	2
ES, ESH	\$E (Restart)	DA, I, ST	2
Fx	\$F (Forward space)	PR, PUN	3
H	\$H (Hold)	DA, I, ST	2
H	\$TO (Set output)	H, O	2
H	SSI	JDS	2
H	F (Modify deactivate)	CK	3
H	\$H (Hold)	JC	3
I	Display more information	ENC, I, ST	0
I	\$I (Interrupt)	PR, PUN	3

# NP Commands (📎)

NP Command	SDSF Action or MVS/JES2 Commands Issued	Valid Panels	Command Level
I	\$T (Set)	LI	3
J	\$J	MAS	1
J	\$D (Display)	SP	1
J	\$SJ (Start)	I, ST	3
JD	\$J	MAS	1
JH	\$J	MAS	1
JJ	\$J	MAS	1
JS	\$J	MAS	1
K	C (Cancel)	DA	3
K	F (Modify)	PR	3
K	F (Modify)	PS	3
KD	CANCEL	NS	3
KD	C (Cancel,dump)	DA	3
L	\$L	DA, I	1
L	\$DO	H, O, ST	1

# NP Commands (📎)

NP Command	SDSF Action or MVS/JES2 Commands Issued	Valid Panels	Command Level
L	Display check history	CK	1
LL	\$L (List)	DA	1
LL	\$DO	H, O, ST	1
M	Match a multisystem enclave	ENC	0
N	\$N (Repeat)	PR, PUN	3
O	\$O	JDS, ST	2
O	\$TO	H	2
OK	\$TO	H	2
P	\$C (Purge)	DA, H, I, JDS, O, ST	2
P	\$CO (Purge)	H, O	2
P	\$P (Stop)	NC, NS	3
P	F (Modify delete)	CK	3
P	\$P (Stop)	NC, NS	3
P	\$P (Stop)	INIT, LI, PR, PUN, RDR, SO, SP	3
P	\$P (Stop)	MAS	4

# NP Commands ( )

NP Command	SDSF Action or MVS/JES2 Commands Issued	Valid Panels	Command Level
PC	\$P (Stop)	SP	3
PF	F (Modify delete, force)	CK	3
PP	\$C (Purge protected)	DA, I, ST	2
Q	Display output descriptors	DA, H, I, JDS, O, ST	0
Q	\$T (Set)	LI	3
R	Display WLM resources	SE	0
R	F (Modify run)	CK	3
R	RESET (RMF)	DA	3
R	Reset ENC	ENC	3
R	R (Reply)	SR	3
RQ	RESET (RMF)	DA	3
RQ	Reset and quiesce ENC	ENC	3
S	Display check results or job data sets	CK, CKH, DA, H, I, JDS, O, OD, ST	0
S	\$S (Start)	INIT, LI, MAS, PR, PUN, RDR, SO, SP	3
S	\$S (Start)	NC, NS	3

# NP Commands ( )

NP Command	SDSF Action or MVS/JES2 Commands Issued	Valid Panels	Command Level
SB	Display check results or browse job data sets	CK, CKH, DA, H, I, JDS, O, OD, ST	0
SBI	Browse REXX input data set using ISPF browse	CK	0
SBO	Browse REXX output data set using ISPF browse	CK	0
SE	Display check results or edit job data sets	CK, CKH, DA, H, I, JDS, O, OD, ST	0
SEI	Edit REXX input data set using ISPF browse	CK	0
SEO	Edit REXX output data set using ISPF browse	CK	0
SJ	Display check results or job data sets	DA, H, I, JDS, O, OD, ST	0
SN	\$S (Start)	NC, NO	3
SR	\$S (Start)	SO	3
ST	Display associated jobs	JC, SE	0
ST	Display ST	JC	1
ST	\$S (Start)	SO	3
T	F (Modify)	PS	3
U	F (Modify update, repcat)	CK	3
V	View page-mode data	JDS, OD	0



# NP Commands ( )

NP Command	SDSF Action or MVS/JES2 Commands Issued	Valid Panels	Command Level
W	\$T (Set)	DA, I, JDS, ST	2
X	Print data set	CK, CKH, DA ,H, I, JDS, O, OD, ST	0
XC	Print data set and close print file	CK, CKH, DA ,H, I, JDS, O, OD, ST	0
XD, XDC	Print data set using Open Print Data Set panel	CK, CKH, DA ,H, I, JDS, O, OD, ST	0
XF, XFC	Print data set using Open Print File panel	CK, CKH, DA ,H, I, JDS, O, OD, ST	0
XS, XSC	Print data set using Open Print panel for SYSOUT	CK, CKH, DA ,H, I, JDS, O, OD, ST	0
Y	P (Stop) (RMF)	DA	3
Y	STOP	NS	3
Z	\$Z (Halt)	INIT, PR, PUN, RDR, SP	3
Z	FORCE	DA	3
Z	FORCE	NS	3
ZM	\$J	MAS	4

# NP Example

- Save four reports to a data set using the **XD**, **X** and **XC** commands
- Example:

```
Display Filter View Print Options Search Help
-----
SDSF JOB DATA SET DISPLAY - JOB @SSTEST1 (J0112337)      LINE 1-9 (9)
COMMAND INPUT ==>                                         SCROLL ==> CSR_
NP  DDNAME      StepName ProcStep DSID  Owner   C Dest          Rec-Cnt
   JESJCLIN                1 R2221   T              25
   JESMSG LG JES2          2 R2221   T LOCAL        18
   JESJCL  JES2          3 R2221   T LOCAL        26
   JESYSMSG JES2          4 R2221   T LOCAL        61
   $INTTEXT JES2          5 R2221   A              17
XD DAFCS      DAF            101 R2221   T              1
X  DAFLOG    DAF            102 R2221   T LOCAL        582
X  DAFSNAP   DAF            105 R2221   T LOCAL        40
XC DAFSTAT   DAF            106 R2221   T LOCAL        130
```

# Primary Commands

# Primary Commands

---

- The next few slides demonstrate how to customize the SDSF screens
- These commands can be executed from any panel or accessed from the action bar located above the primary command line
- A question mark (?) can be passed as a parameter to display a pop-up panel on most commands
- After executing these commands, terminate SDSF to ensure the settings are saved

# KEYS

- Validate that **PF5** is **IFIND** and **PF12** is **CRETRIEV**  
→ **KEYS**

- Results:

```
Command ==> PF Key Definitions and Labels - Primary Keys
Number of PF Keys . . . 24 Terminal type . . : 3278
PF1 . . . HELP
PF2 . . . SPLIT
PF3 . . . END
PF4 . . . RETURN
PF5 . . . IFIND
PF6 . . . BOOK
PF7 . . . UP
PF8 . . . DOWN
PF9 . . . SWAP
PF10 . . LEFT
PF11 . . RIGHT
PF12 . . CRETRIEV

PF1 label . . _____ PF2 label . . _____ PF3 label . . _____
PF4 label . . _____ PF5 label . . _____ PF6 label . . _____
PF7 label . . _____ PF8 label . . _____ PF9 label . . _____
PF10 label . . _____ PF11 label . . _____ PF12 label . . _____

Press ENTER key to display alternate keys. Enter END command to exit.
```



- Display alternate columns (which are defined in **ISFPARMS**)  
→ ?
- Results:

```
Display Filter View Print Options Search Help
-----
SDSF STATUS DISPLAY ALL CLASSES                               LINE 1-4 (4)
COMMAND INPUT ==>                                           SCROLL ==> CSR
NP JOBNAME JOBID OWNER MC ST-DATE ST-TIME QUEUE ISYS MAX-RC
@SSTEST1 J0080642 R2221 T 2012.290 12:50:00 PRINT DV27 CC 0000
@SSTEST2 J0080640 R2221 T 2012.290 12:49:55 PRINT DV27 CC 0000
@SSTEST3 J0080638 R2221 T 2012.290 12:49:49 PRINT DV27 CC 0000
R2221 T0080591 R2221 9 2012.290 12:31:35 EXECUTION DV27
```

# SET ACTION [SHORT | LONG | OFF | ?]

- Display action characters (NP commands)  
→ SET ACTION SHORT
- Results:

```
Display Filter View Print Options Search Help
-----
SDSF STATUS DISPLAY ALL CLASSES          SET COMMAND COMPLETE
COMMAND INPUT ===>                      SCROLL ===> CSR
ACTION=//,=,+ ,? ,A,C,CA,CD,CDA,D,DL,E,EC,ES,ESH,H,I,J,L,LL,O,P,PO,PP,Q,S,SB,SE,
ACTION=SJ,W,X,XC,XD,XDC,XF,XFC,XS,XSC
NP  JOBNAME  JobID   Owner   Prty Queue  C  Pos  Saff  ASys  Status
R2223@LC J0002584 SSPBATC 15 EXECUTION R      Pos  Saff  ASys  HOLD
R2223@LC J0002585 SSPBATC 15 EXECUTION R      Pos  Saff  ASys  HOLD
R2223@LC J0002586 SSPBATC 15 EXECUTION R      Pos  Saff  ASys  HOLD
R2027DEV J0008943 R2027   15 EXECUTION R      Pos  Saff  ASys  HOLD
R2255YZL J0046727 R2255   15 EXECUTION R      Pos  Saff  ASys  HOLD
RPRD002  J0092111 SSPBATC 15 EXECUTION R      Pos  Saff  ASys  HOLD
RUSR002  J0096643 R1800   15 EXECUTION R      Pos  Saff  ASys  HOLD
R2339D28 J0061422 R2339   15 EXECUTION R      1     Saff  ASys  HOLD
@PDSM18  J0077694 R2379   15 EXECUTION S      1     Saff  ASys  HOLD
XSAHCR   J0063114 RB107   15 EXECUTION X      Pos  Saff  ASys  HOLD
R9991    T0080460 R9991   15 EXECUTION      DV27  DV27
R9988    T0080462 R9988   15 EXECUTION      DV27  DV27
R9990    T0080479 R9990   15 EXECUTION      DV27  DV27
R2253    T0080558 R2253   15 EXECUTION      DV27  DV27
R9984    T0080571 R9984   15 EXECUTION      DV27  DV27
R9985    T0080577 R9985   15 EXECUTION      DV27  DV27
```

# SET DISPLAY [ON | OFF | LONG | ?]

- Display **PREFIX**, **OWNER** and other settings  
→ SET DISPLAY
- Results:

```
Display Filter View Print Options Search Help
-----
SDSF STATUS DISPLAY ALL CLASSES
COMMAND INPUT ==>
PREFIX=* DEST=(ALL) OWNER=* SYSNAME=
SET COMMAND COMPLETE
SCROLL ==> CSR_

NP  JOBNAME  JobID  Owner  Prty Queue  C  Pos  Saff  ASys  Status
R2223@LC J0002584 SSPBATC 15 EXECUTION R          HOLD
R2223@LC J0002585 SSPBATC 15 EXECUTION R          HOLD
R2223@LC J0002586 SSPBATC 15 EXECUTION R          HOLD
R2027DEV J0008943 R2027 15 EXECUTION R          HOLD
R2255YZL J0046727 R2255 15 EXECUTION R          HOLD
RPRD002 J0092111 SSPBATC 15 EXECUTION R          HOLD
RUSR002 J0096643 R1800 15 EXECUTION R          HOLD
R2339D28 J0061422 R2339 15 EXECUTION R          1
@PDSM18 J0077694 R2379 15 EXECUTION S          1
XSAHCR  J0063114 RB107 15 EXECUTION X          HOLD
R9991   T0080460 R9991 15 EXECUTION          DV27 DV27
R9988   T0080462 R9988 15 EXECUTION          DV27 DV27
R0323   T0080467 R0323 15 EXECUTION          DV27 DV27
R9990   T0080479 R9990 15 EXECUTION          DV27 DV27
RW515   T0080504 RW515 15 EXECUTION          DV27 DV27
R2253   T0080558 R2253 15 EXECUTION          DV27 DV27
R8262   T0080561 R8262 15 EXECUTION          DV27 DV27
RB105   T0080562 RB105 15 EXECUTION          DV27 DV27
```



# SET DISPLAY LONG

- Display sort criteria  
    ➔ SET DISPLAY LONG
- Results:

```
Display Filter View Print Options Search Help
-----
SDSF STATUS DISPLAY ALL CLASSES          SET COMMAND COMPLETE
COMMAND INPUT ==>                        SCROLL ==> CSR_
PREFIX=* DEST=(ALL) OWNER=* SORT=JOBNAME/A END-DATE//D END-TIME//D
SYSNAME=*
NP  JOBNAME  JobID   Owner   Prty Max-RC   Queue      C  Pos  Saff  ASys S
$AVRS27 S0163356 AVR#DVP   1  CC 0000  PRINT      1024
$AVRS27 S0162582 AVR#DVP   1  CC 0000  PRINT      938
$AVRS27 S0161745 AVR#DVP   1  CC 0000  PRINT      873
$AVRS27 S0160876 AVR#DVP   1  CC 0000  PRINT      800
$AVRS27 S0159169 AVR#DVP   1  CC 0000  PRINT      724
$AVRS27 S0164291 AVR#DVP   15             EXECUTION          DV27 DV27
$MASCOMM S0000001 *BYPASS* 15             PRINT              1
@CKMW1   J0042037 R6406    15             EXECUTION R
@CKMW2   J0042052 R6406    15             EXECUTION R
@DMBKUPA J0164045 R0196    1  CC 0000  PRINT      R  999
@DMREPT  J0162363 R2274    1  CC 0000  PRINT      O  862
@DMREPT  J0162355 R2274    1  CC 0000  PRINT      O  861
@DMREPT  J0162354 R2274    1  CC 0000  PRINT      O  860
@DMREPT  J0162353 R2274    1  CC 0000  PRINT      O  859
@DMREPT  J0162343 R2274    1  CC 0000  PRINT      O  857
@DSA19RS J0163926 A192299  1  CC 0000  PRINT      R  995
@DSA19RS J0160478 A192299  1  CC 0000  PRINT      R  684
```

# PREFIX [jobname | \* | ? ]

- Display all job names starting with a particular character string  
 → `PRE @SSTEST* ; OWNER *`
- Results:

```

Display Filter View Print Options Search Help
-----
SDSF STATUS DISPLAY ALL CLASSES                               LINE 1-3 (3)
COMMAND INPUT ==>                                           SCROLL ==> CSR_
PREFIX=@SSTEST*      DEST=(ALL) OWNER=* SYSNAME=
NP  JOBNAME      JobID  Owner   Prty Queue   C  Pos  Saff ASys Status
   @SSTEST1     J0080638 R2221    1 PRINT    R   579
   @SSTEST2     J0080640 R2221    1 PRINT    R   581
   @SSTEST3     J0080642 R2221    1 PRINT    R   583

```

# OWNER [userid | \* | ?]

- Display all jobs submitted by a particular userid  
 → OWNER R2221 ; PRE \*
- Results:

```

Display Filter View Print Options Search Help
-----
SDSF STATUS DISPLAY ALL CLASSES                               LINE 1-4 (4)
COMMAND INPUT ==>                                           SCROLL ==> CSR_
PREFIX=*  DEST=(ALL)  OWNER=R2221  SYSNAME=
NP  JOBNAME  JobID  Owner  Prty Queue  C  Pos  Saff  ASys  Status
   R2221    T0080591 R2221    15 EXECUTION  R  579  DV27  DV27
   @SSTEST1 J0080638 R2221    1 PRINT      R  581
   @SSTEST2 J0080640 R2221    1 PRINT      R  583
   @SSTEST3 J0080642 R2221    1 PRINT

```

# S [jobname]

- Display specific job names  
→ S PDSMAN

- Results:

```
Display Filter View Print Options Search Help
-----
SDSF STATUS DISPLAY ALL CLASSES                               LINE 1-4 (4)
COMMAND INPUT ==>                                           SCROLL ==> CSR_
PREFIX=* DEST=(ALL) OWNER=R2221 SYSNAME=*
NP  JOBNAME JobID  Owner   Prty Queue   C  Pos  Saff  ASys Status
    PDSMAN  S0074532 PDS#MANP  15 EXECUTION   DV21 DV21
    PDSMAN  S0075461 PDS#MANP  15 EXECUTION   DV25 DV25
    PDSMAN  S0076553 PDS#MANP  15 EXECUTION   DV26 DV26
    PDSMAN  S0077723 PDS#MANP  15 EXECUTION   DV22 DV22
```

# SYSNAME [lpar | \* | ?]

- Display all jobs/started tasks within the sysplex  
→ **SYSN \***
- Results:

```

Display Filter View Print Options Search Help
-----
SDSF DA DV27      (ALL)    PAG 0  CPU/L    3/ 1    LINE 1-2 (2)
COMMAND INPUT ==>
PREFIX=VT*  DEST=(ALL)  OWNER=*  SYSNAME=*
-----
NP  JOBNAME  CPU%  ASID  ASIDX  EXCP-Cnt  CPU-Time  SR Status  SysName  SPag  SCP
    VTAM    0.15   84  0054   41994   146.54    0         SDV27     0
    VTAM    0.12   80  0050   42826   99.09     0         SDV28     0
  
```

# ARRANGE [col1] [A|B] [col2] | ?

- Move column **MAX-RC** before column **PRTY**  
→ **ARR MAX-RC B PRTY**
- Results:

```
Display Filter View Print Options Search Help
-----
SDSF STATUS DISPLAY ALL CLASSES                LINE 1-4 (4)
COMMAND INPUT ==>                               SCROLL ==> CSR_
PREFIX=* DEST=(ALL) OWNER=R2221 SYSNAME=*
NP  JOBNAME  JobID  Owner  Max-RC  Prty Queue  C  Pos  Saff  ASys S
    R2221    T0080992 R2221  CC 0000 15 EXECUTION R 485 DV27 DV27
    @SSTEST1 J0080638 R2221  CC 0000 1 PRINT R 486
    @SSTEST2 J0080640 R2221  CC 0000 1 PRINT R 487
    @SSTEST3 J0080642 R2221  CC 0000 1 PRINT R 487
```

# ARRANGE ?

- Move columns and change column widths using a pop-up panel  
→ ARR ?

- Results:

```
Display Filter View Print Options Search Help
-----
SDSF STATUS DI          Arrange          Row 1 to 11 of 27
COMMAND INPUT          Command ==>> _____
PREFIX=* DEST
NP  JOBNAME
   R2221
   @SSTEST1
   @SSTEST2
   @SSTEST3
```

Column	Width	Description
JobID	8	
Owner	8	
Max-RC	10	
Prty	4	
Queue	10	
C	1	
Pos	5	
SAff	5	
ASys	4	
Status	17	
PrtDest	18	

# FILTER [col] [=, etc.] [value] | ? | OFF

- Display only job names equal to R2221\*  
     → `FIL JOBNAME = @SSTEST*`
- Results:

```

Display Filter View Print Options Search Help
-----
SDSF STATUS DISPLAY ALL CLASSES                               LINE 1-3 (3)
COMMAND INPUT ==>                                           SCROLL ==> CSR_
PREFIX=*  DEST=(ALL)  OWNER=*  FILTERS=1  SYSNAME=*
NP  JOBNAME JobID  Owner  Max-RC  Prty Queue  C Pos SAff ASys S
   @SSTEST1 J0080638 R2221  CC 0000  1 PRINT  R  485
   @SSTEST2 J0080640 R2221  CC 0000  1 PRINT  R  486
   @SSTEST3 J0080642 R2221  CC 0000  1 PRINT  R  487

```



# FILTER ?

- Filter columns using a pop-up panel  
→ FIL ?
- Results:

```
Display Filter View Print Options Search Help
-----
SDSF STAF                                     Filter          Row 1 to 9 of 25
COMMAND 1 Command ==> _____ => CSR_
PREFIX=*
NP  JOBN  Type filter criteria. Press F4/16 in the Column or Oper   ASys S
      @SST field for values, or in the Value field for system symbols.
      @SST Press F11/23 to clear all filter criteria.
      @SST Filtering is OFF

      AND/OR between columns  AND  (AND/OR)
      AND/OR within a column  OR   (AND/OR)

      Column          Oper  Value (may include * and %)
      _____  ___  _____
      _____  ___  _____
      _____  ___  _____
      _____  ___  _____
      _____  ___  _____
      _____  ___  _____
      _____  ___  _____
      _____  ___  _____
```

# FILTER ?

- From the 'Filter' pop-up panel, place the cursor on the 'Column' field and press **F4** to obtain a list of column names
- Results:

```
Display Filter View Print Options Search Help
-----
SDSF STAFF          Filter          Row 1 to 9 of 25
COMMAND I          CSR_
PREFIX=*
NP  JOBNAME        ASys S
@SS
@SS
@SS

Command ==> _____

Selection:
1.  JOBNAME
2.  JobID
3.  Owner
4.  Prty
5.  Max-RC
6.  Queue
7.  C
8.  Pos
9.  SAff
10. ASys
11. Status
12. PrtDest
13. SecLabel
14. TGNum
15. TGPct
```

# FILTER ?

- From the 'Filter' pop-up panel, place the cursor on the 'Oper' field and press **F4** to obtain a list of operators
- Results:

```
Display Filter View Print Options Search Help
-----
SDSF STAI                               Filter                               Row 1 to 9 of 25
COMMAND I
PREFIX=*
NP  JOBN
@SS
@SS
@SS
or Oper
all
ASys S
and %)
F1=Help  F12=Cancel
```

# FILTER ?

- From the 'Filter' pop-up panel, place the cursor on the 'Value' field and press **F4** to obtain a list of system symbols
- Results:

```
Display Filter View Print Options Search Help
-----
SDSF STAF
COMMAND I
PREFIX=*
NP  JOBN
@SS
@SS
@SS

Filter Row 1 to 9 of 25
System Symbols Row 1 to 12 of 68
Command ==> _____ CSR_
ASys S

The values may change. Use them only as examples.

Selection:
Symbol Value
1.  &$CILPARX. CICS$$X$$
2.  &$CILPARY. CIPA$$X$$
3.  &$ESABINO. V3131
4.  &$ESCLFED. V9R5M40
5.  &$ESCLIPX. CACDS1
6.  &$ESDEBUD. R13V01M0
7.  &$ESDMSLL. SET2
8.  &$ESDMSXX. SET2
9.  &$ESEDEV. R16SP0
10. &$ESIBMAP. V13R1
11. &$ESIBMCC. V1R7
12. &$ESIBMFA. V13
```

# SORT [+|-] [column] [A|D] | ? | OFF

- Display the most recent or the oldest jobs at the top
  - SORT END-DATE D END-TIME D (the most recent at the top)
  - SORT ST-DATE D ST-TIME D (the oldest at the top)
- Results:

```

Display Filter View Print Options Search Help
-----
SDSF STATUS DISPLAY ALL CLASSES                               LINE 1-4 (4)
COMMAND INPUT ==>                                           SCROLL ==> CSR_
PREFIX=* DEST=(ALL) OWNER=R2221 SORT=END-DATE//D END-TIME//D SYSNAME=*
NP  JOBNAME  END-DATE  END-TIME  TOT-LINES  PRDEST  SECLABEL  ORIGNOD
   @SSTEST3  2012.290  12:50:00    48  LOCAL          LOCAL
   @SSTEST2  2012.290  12:49:55    48  LOCAL          LOCAL
   @SSTEST1  2012.290  12:49:49    48  LOCAL          LOCAL
   R2221     0000.000  0:00:00    42  LOCAL          LOCAL
  
```

# SORT ?

- Sort columns using a pop-up panel  
→ SORT ?
- Results:

```
Display Filter View Print Options Search Help
-----
SDSF STATUS DISPL
COMMAND INPUT ===
PREFIX=* DEST=(A
NP  JOBNAME Job
    R2221  T00
    @SSTEST1 J00
    @SSTEST2 J00
    @SSTEST3 J00
```

Sort

Command ==> \_\_\_\_\_

Type sort criteria. Type / for Column Title to see a list. Press F11/23 to clear all sort criteria.

Sorting is OFF

Column Title	A or D (Ascending or Descending)
_____	--
_____	--
_____	--
_____	--
_____	--
_____	--
_____	--
_____	--
_____	--
_____	--

# SORT ?

- From the 'Sort' pop-up panel, type in a / in the 'Column Title' field and press **ENTER** to obtain a list of column names
- Results:

```
Display Filter View Print Options Search Help
-----
SDSF STATUS DISPL
COMMAND INPUT ===
PREFIX=* DEST=(A
NP  JOBNAME Job
    R2221 T00
    @SSTEST1 J00
    @SSTEST2 J00
    @SSTEST3 J00
```

```
Sort
Column Select Row 1 to 15 of 49
Command ==> _____
Selection:
1. JOBNAME
2. JobID
3. Owner
4. Prty
5. Max-RC
6. Queue
7. C
8. Pos
9. SAff
10. ASys
11. Status
12. PrtDest
13. SecLabel
14. TGNum
15. TGPct
```

# SEARCH [text]

- Search and display tutorials on the **SORT** command  
→ **SEARCH SORT**
- Results:

```
Search Help Row 1 to 16 of 183
Command ==> _____
Search for: SORT_____ _ Show titles

- Select a search result to display the help panel.
- the value to null sorts the panel using the fixed field (the first
- 4 - SORT Sort data on tabular panels
- SORT column A D - Sort based on a column, ascending or descending.
- SORT column A D - Sort based on a column, ascending or descending.
- SORT column A - Sort based on a column, in ascending order.
- SORT column A - Sort based on a column, in ascending order.
- SORT column A - Sort based on a column, in ascending order.
- SORT column A D - Sort based on a column, ascending or descending
- SORT column A D - Sort based on a column, ascending or descending.
- SORT column A D - Sort based on a column, ascending or descending
- SORT column A D - Sort based on a column, ascending or descending
- SORT column A - Sort based on a column, in ascending order.
- SORT column A D - Sort based on a column, ascending or descending
- SORT column A D - Sort based on a column, ascending or descending
- SORT column A - Sort based on a column, in ascending order.
```



# WHO

- Display ISPF, SDSF and other system information  
→ WHO
- Results:

```
Display Filter View Print Options Search Help
-----
SDSF STATUS DISPLAY ALL CLASSES                               LINE 1-1 (1)
COMMAND INPUT ===>                                         SCROLL ===> CSR
USERID=R2221,PROC=IKJTSO01,TERMINAL=T#3KWGF,GRPINDEX=1,GRPNAME=SDSFV1R6,
MVS=z/OS 02.01.00,JES=z/OS 2.1,SDSF=HQX7790,ISPF=7.1,RMF/DA=NOTACC,SERVER=YES,
SERVERNAME=SDSFWF,JESNAME=JES2,MEMBER=DV27,JESTYPE=JES2,SYSNAME=SDV27,
SYSPLEX=TSAPLEX,COMM=NOTAVAIL,COMM=ENABLED
```

# LOG

# OPERLOG vs. SYSLOG

- OPERLOG
  - Operations log (OPERLOG)
  - Is a merged, sysplex-wide system message log
  - It is provided by a log stream
    - Which is a collection of log data used by the MVS System Logger
- SYSLOG
  - Systems log (SYSLOG)
  - Contains a logical partition's (lpar) message log
  - It is a SYSOUT data set produced by the Job Entry Subsystem (JES2/3)
    - SYSOUT data sets are output spool data sets on direct access storage devices (DASD)
- SDSF LOG command
  - Used to display the OPERLOG or a single system's SYSLOG

# LOG OPERLOG

- Display the OPERLOG (which is the default)  
→ LOG
- Results:

```
Display Filter View Print Options Search Help
-----
SDSF OPERLOG DATE 10/16/2012      6 WTORS      COLUMNS 02- 81
COMMAND INPUT ==> SCROLL ==> CSR
N 0000000 SDV28      12290 16:42:14.76 28      00000210 ANTL8801I XQUERY SDVMVB
N 4000000 SDV28      12290 16:42:14.77 28      00000010 ANTU2515I XQUERY SUMMARY
N 0000000 SDV28      12290 16:42:14.77 28      00000210 ANTL8801I XQUERY SDMVMA
N 4000000 SDV28      12290 16:42:15.57 28      00000010 ANTU2515I XQUERY CONFIGU
N 4000000 SDV28      12290 16:42:15.68 28      00000010 ANTU2515I XQUERY CONFIGU
N 4000000 SDV28      12290 16:42:15.84 28      00000010 ANTU2515I XQUERY CONFIGU
N 4000000 SDV28      12290 16:42:15.87 28      00000010 ANTU2515I XQUERY CONFIGU
N 0020000 SDV27      12290 16:42:19.81 S0080735 00000201 GVB686I  SYS00001 ACB ST
S      VALUES
N 0020000 SDV27      12290 16:42:19.81 S0080735 00000201 GVB105I  SYS00001 BUFSP=
N 0020000 SDV27      12290 16:42:19.82 S0080735 00000201 GVB686I  SYS00003 ACB ST
S      VALUES
N 0020000 SDV27      12290 16:42:19.82 S0080735 00000201 GVB105I  SYS00003 BUFSP=
N 0020000 SDV27      12290 16:42:19.83 S0080735 00000201 GVB686I  $AVRLOCK ACB ST
S      VALUES
N 0020000 SDV27      12290 16:42:19.83 S0080735 00000201 GVB105I  $AVRLOCK BUFSP=
N 4220000 SDV27      12290 16:42:19.84 S0080735 00000201 $AVR455I - BPXAS(S008099
N 0200000 SDV27      12290 16:42:20.13 S0080993 00000201 $HASP250 BPXAS PURGED --
N 0080000 SDV28      12290 16:42:24.47 S0078681 00000201 ETCL300I Database update
N 8000000 SDV27      12290 16:42:24.71 S0080473 00400000 GDP152E ONE OR MORE SESS
```

# LOG SYSLOG

- Display the SYSLOG  
    → LOG S
- Results:

```
Display Filter View Print Options Search Help
-----
SDSF SYSLOG 78865.106 DV27 DV27 10/16/2012 6W 112,065 COLUMNS 02- 81
COMMAND INPUT ==> SCROLL ==> CSR
M 0020000 SDV27 12290 16:45:31.17 S0078915 00000201 IEC205I SYS10649,DFSMSHS
E 626 00000201 DSN=DVPR9.BACKTAPE.DATAS
N 0000000 SDV27 12290 16:45:31.17 27 00000201 IEA989I SLIP TRAP ID=X33
N 0000000 SDV27 12290 16:45:31.17 27 00000201 IEA989I SLIP TRAP ID=X33
N 0000000 SDV27 12290 16:45:31.17 27 00000201 IEA989I SLIP TRAP ID=X33
N 2000000 SDV27 12290 16:45:31.42 S0078915 00000010 TMS014 IEF234E K 07ED,D
N 2000000 SDV27 12290 16:45:31.42 S0078915 00080214 IEF234E K 07ED,DW2863,PV
N 0000000 SDV27 12290 16:45:49.98 S0078867 00000200 OPS3724O TSO TOD.SSHDCHE
N 0000000 SDV27 12290 16:45:49.98 S0078867 00000200 OPS3092O OI SSHDTASK SSH
N 0000000 SDV27 12290 16:45:50.00 S0078867 00000200 OPS3092O READY
M 4040000 SDV27 12290 16:46:00.14 S0078913 00000201 AIR010I PFA CHECK PFA_JE
D 635 00000201 WAS UNABLE TO OPEN LOG
D 635 00000201 ERRNO= 00000081 ERRNOJR=
E 635 00000201 FILENAME= /var/pfa/PFA_J
M 4040000 SDV27 12290 16:46:00.14 S0078913 00000201 AIR010I PFA CHECK PFA_EN
D 636 00000201 WAS UNABLE TO OPEN LOG
D 636 00000201 ERRNO= 00000081 ERRNOJR=
E 636 00000201 FILENAME= /var/pfa/PFA_E
N 0000000 SDV27 12290 16:46:25.02 S0078990 00000200 OPS1181O OPSIPSOC OPSS (
NC0000000 SDV27 12290 16:46:25.02 SDV2730 00000205 RSSHB NC
```

# SYSID [lpar | \* | ?]

- Display a particular system's SYSLOG  
→ **SYSID DV28**
- Results:

```
Display Filter View Print Options Search Help
-----
SDSF SYSLOG 78865.106 DV28 DV27 10/16/2012 6W 112,065 COLUMNS 02- 81
COMMAND INPUT ==> SCROLL ==> CSR
M 0020000 SDV28 12290 16:45:31.17 S0078915 00000201 IEC205I SYS10649,DFSMSHS
E 626 00000201 DSN=DVPR9.BACKTAPE.DATAS
N 0000000 SDV28 12290 16:45:31.17 27 00000201 IEA989I SLIP TRAP ID=X33
N 0000000 SDV28 12290 16:45:31.17 27 00000201 IEA989I SLIP TRAP ID=X33
N 0000000 SDV28 12290 16:45:31.17 27 00000201 IEA989I SLIP TRAP ID=X33
N 2000000 SDV28 12290 16:45:31.42 S0078915 00000010 TMS014 IEF234E K 07ED,D
N 2000000 SDV28 12290 16:45:31.42 S0078915 00080214 IEF234E K 07ED,DW2863,PV
N 0000000 SDV28 12290 16:45:49.98 S0078867 00000200 OPS3724O TSO TOD.SSHDCHE
N 0000000 SDV28 12290 16:45:49.98 S0078867 00000200 OPS3092O OI SSHDTASK SSH
N 0000000 SDV28 12290 16:45:50.00 S0078867 00000200 OPS3092O READY
M 4040000 SDV28 12290 16:46:00.14 S0078913 00000201 AIR010I PFA CHECK PFA_JE
D 635 00000201 WAS UNABLE TO OPEN LOG
D 635 00000201 ERRNO= 00000081 ERRNOJR=
E 635 00000201 FILENAME= /var/pfa/PFA_J
M 4040000 SDV28 12290 16:46:00.14 S0078913 00000201 AIR010I PFA CHECK PFA_EN
D 636 00000201 WAS UNABLE TO OPEN LOG
D 636 00000201 ERRNO= 00000081 ERRNOJR=
E 636 00000201 FILENAME= /var/pfa/PFA_E
N 0000000 SDV28 12290 16:46:25.02 S0078990 00000200 OPS1181O OPSIPSOC OPSS_(
NC0000000 SDV28 12290 16:46:25.02 SDV2730 00000205 RSSHB NC
```

# ACTION [ALL | OFF | ?]

- Remove WTORs from the OPERLOG and the SYSLOG  
→ ACTION

- Results:

```
Display Filter View Print Options Search Help
-----
SDSF SYSLOG 78865.106 DV27 DV27 10/16/2012 6W 112,065 COLUMNS 02- 81
COMMAND INPUT ==> SCROLL ==> CSR
M 0020000 SDV27 12290 16:45:31.17 S0078915 00000201 IEC205I SYS10649,DFSMSHS
E 626 00000201 DSN=DVPR9.BACKTAPE.DATAS
N 0000000 SDV27 12290 16:45:31.17 27 00000201 IEA989I SLIP TRAP ID=X33
N 0000000 SDV27 12290 16:45:31.17 27 00000201 IEA989I SLIP TRAP ID=X33
N 0000000 SDV27 12290 16:45:31.17 27 00000201 IEA989I SLIP TRAP ID=X33
N 2000000 SDV27 12290 16:45:31.42 S0078915 00000010 TMS014 IEF234E K 07ED,D
N 2000000 SDV27 12290 16:45:31.42 S0078915 00080214 IEF234E K 07ED,DW2863,PV
N 0000000 SDV27 12290 16:45:49.98 S0078867 00000200 OPS3724O TSO TOD.SSHDCHE
N 0000000 SDV27 12290 16:45:49.98 S0078867 00000200 OPS3092O OI SSHDTASK SSH
N 0000000 SDV27 12290 16:45:50.00 S0078867 00000200 OPS3092O READY
M 4040000 SDV27 12290 16:46:00.14 S0078913 00000201 AIR010I PFA CHECK PFA_JE
D 635 00000201 WAS UNABLE TO OPEN LOG
D 635 00000201 ERRNO= 00000081 ERRNOJR=
E 635 00000201 FILENAME= /var/pfa/PFA_J
M 4040000 SDV27 12290 16:46:00.14 S0078913 00000201 AIR010I PFA CHECK PFA_EN
D 636 00000201 WAS UNABLE TO OPEN LOG
D 636 00000201 ERRNO= 00000081 ERRNOJR=
E 636 00000201 FILENAME= /var/pfa/PFA_E
N 0000000 SDV27 12290 16:46:25.02 S0078990 00000200 OPS1181O OPSIPSOC OPSS_ (
***** Bottom of Data *****
```

# FINDLIM [##### | ?]

- Increase the maximum number of lines searched by the **FIND** command to **9,999,999** (default is **9,999**)  
    → **FINDLIM 9999999 ; F FARGO PREV**
- Results:

```
Display Filter View Print Options Search Help
-----
SDSF SYSLOG 78865.106 DV27 DV27 10/16/2012 6W * TOP OF DATA REACHED *
COMMAND INPUT ==> SCROLL ==> CSR
M 0020000 SDV27 12290 16:45:31.17 S0078915 00000201 IEC205I SYS10649,DFSMSHS
E 626 00000201 DSN=DVPR9.BACKTAPE.DATAS
N 0000000 SDV27 12290 16:45:31.17 27 00000201 IEA989I SLIP TRAP ID=X33
N 0000000 SDV27 12290 16:45:31.17 27 00000201 IEA989I SLIP TRAP ID=X33
N 0000000 SDV27 12290 16:45:31.17 27 00000201 IEA989I SLIP TRAP ID=X33
N 2000000 SDV27 12290 16:45:31.42 S0078915 00000010 TMS014 IEF234E K 07ED,D
N 2000000 SDV27 12290 16:45:31.42 S0078915 00080214 IEF234E K 07ED,DW2863,PV
N 0000000 SDV27 12290 16:45:49.98 S0078867 00000200 OPS3724O TSO TOD.SSHDCHE
N 0000000 SDV27 12290 16:45:49.98 S0078867 00000200 OPS3092O OI SSHDTASK SSH
N 0000000 SDV27 12290 16:45:50.00 S0078867 00000200 OPS3092O READY
M 4040000 SDV27 12290 16:46:00.14 S0078913 00000201 AIR010I PFA CHECK PFA_JE
D 635 00000201 WAS UNABLE TO OPEN LOG
D 635 00000201 ERRNO= 00000081 ERRNOJR=
E 635 00000201 FILENAME= /var/pfa/PFA_J
M 4040000 SDV27 12290 16:46:00.14 S0078913 00000201 AIR010I PFA CHECK PFA_EN
D 636 00000201 WAS UNABLE TO OPEN LOG
D 636 00000201 ERRNO= 00000081 ERRNOJR=
E 636 00000201 FILENAME= /var/pfa/PFA_E
N 0000000 SDV27 12290 16:46:25.02 S0078990 00000200 OPS1181O OPSIPSOC OPSS (
NC0000000 SDV27 12290 16:46:25.02 SDV2730 00000205 RSSHB NC
```



# LOCATE [hh:mm:ss] [mm/dd/yyyy]

- Locate messages from one o'clock am today  
→ L 01:00:00
- Results:

```
Display Filter View Print Options Search Help
-----
SDSF OPERLOG DATE 10/16/2012      5 WTORs                COLUMNS 02- 81
COMMAND INPUT ==>                SCROLL ==> CSR_
NC0000000 SDV27      12290 01:00:00.05 TBI10001 000A0205 *DIS TRACE MONITOR
N 4200000 SDV27      12290 01:00:00.06 S0079042 000A0214 DFS4445I CMD FROM MCS/E-
S                                VPI1
MR0000000 SDV27      12290 01:00:00.06 S0079042 00000010 DFS4444I DISPLAY FROM ID
DR                                545 00000010      IMS ACTIVE TRACES
DR                                545 00000010
DR                                545 00000010      MONITOR IS INACTIVE
ER                                545 00000010      *2012290/010000*
N 0020000 SDV27      12290 01:00:00.06 S0078995 00000201 GVB686I VIPHST02 ACB ST
S                                VALUES
N 0020000 SDV27      12290 01:00:00.06 S0078995 00000201 GVB105I VIPHST02 BUFSP=
N 0020000 SDV28      12290 01:00:00.09 S0078736 00000201 GVB686I VIPHST04 ACB ST
S                                VALUES
N 0020000 SDV28      12290 01:00:00.09 S0078736 00000201 GVB105I VIPHST04 BUFSP=
N 0200000 SDV27      12290 01:00:00.18 J0080203 00000201 $HASP100 XSSCATBK ON INT
S                                SCHEDTS
N 0000000 SDV27      12290 01:00:00.34 S0079868 00000201 BMC23101 DC21 Asynchrono
N 0000000 SDV27      12290 01:00:00.34 S0079868 00000201 BMC23007 DC21 No data to
N 0000000 SDV27      12290 01:00:00.34 S0079868 00000201 BMC23101 DC21 Asynchrono
N 0000000 SDV27      12290 01:00:00.34 S0079868 00000201 BMC23007 DC21 No data to
```

# SET DATE [date] [/ | - | .] ?

- Set the date format used with **FILTER**, **LOCATE** and **PRINT** commands  
→ **SET DATE ?**

- Results:

```
Display Filter View Print Options Search Help
-----
SDSF OPERLOG DATE 10/16/2012
COMMAND INPUT ==>
NC0000000 SDV27 12290 01:00
N 4200000 SDV27 12290 01:00
S
MR0000000 SDV27 12290 01:00
DR
DR
DR
ER
N 0020000 SDV27 12290 01:00
S
N 0020000 SDV27 12290 01:00
N 0020000 SDV28 12290 01:00
S
N 0020000 SDV28 12290 01:00:00.09 S0078736 00000201
N 0200000 SDV27 12290 01:00:00.18 J0080203 00000201
S
N 0000000 SDV27 12290 01:00:00.34 S0079868 00000201
N 0000000 SDV27 12290 01:00:00.34 S0079868 00000201
N 0000000 SDV27 12290 01:00:00.34 S0079868 00000201
N 0000000 SDV27 12290 01:00:00.34 S0079868 00000201
```

Set Date Format

Select the order.

- 1 1. mm/dd/yyyy
2. dd/mm/yyyy
3. yyyy/mm/d

Select the separator.

- 1 1. /
2. -
3. .

F1=Help F12=Cancel

```

          COLUMNS 02- 81
          SCROLL ==> CSR_
          S TRACE MONITOR
          4445I CMD FROM MCS/E-
          1
          4444I DISPLAY FROM ID
          IMS ACTIVE TRACES
          MONITOR IS INACTIVE
          *2012290/010000*
          686I VIPHST02 ACB ST
          UES
          105I VIPHST02 BUFSP=
          686I VIPHST04 ACB ST
          UES
          GVB105I VIPHST04 BUFSP=
          $HASP100 XSSCATBK ON INT
          SCHEDTS
          BMC23101 DC21 Asynchrono
          BMC23007 DC21 No data to
          BMC23101 DC21 Asynchrono
          BMC23007 DC21 No data to
```

# FILTER [col] [=, etc.] [value] | ? | OFF

- Display only messages starting with IEC\*  
→ **FIL MSGID = IEC\***

- Results:

```
Display Filter View Print Options Search Help
-----
SDSF OPERLOG DATE 11/03/2012 48 WTORS 1 FILTER COLUMNS 02- 81
COMMAND INPUT ==> SCROLL ==> CSR
E 453 00000201 DSN=PRDOK.R7329.VTS1.G64
M 0020000 SDV25 12308 04:16:03.36 J0112566 00000201 IEC205I SYSUT2,XDMBVS2,
E 470 00000201 DSN=PRDOK.R7329.VTS2.G59
N 0020000 SDV25 12308 04:26:11.16 J0112642 00000201 IEC130I GRTFILE DD STAT
N 0020000 SDV25 12308 04:26:31.24 J0112643 00000201 IEC130I GRTFILE DD STAT
N 0020000 SDV25 12308 04:26:36.48 J0112644 00000201 IEC130I GRTFILE DD STAT
N 0020000 SDV25 12308 04:27:16.85 J0112651 00000201 IEC130I GRTFILE DD STAT
N 0020000 SDV25 12308 04:27:52.19 J0112659 00000201 IEC130I GRTFILE DD STAT
N 2000000 SDV21 12308 04:30:32.87 J0112720 00000000 IECTMS9 0716,541630,XSSI
N A800000 SDV21 12308 04:30:32.87 J0112720 00400000 *IEC507D E 0716,541630,XS
M 0020000 SDV21 12308 04:30:33.54 J0112720 00000201 IEC205I ACCDEV,XSSIBMD0,
E 169 00000201 DSN=PRDOK.#LOGREC.TSTPLE
N 0020000 SDV25 12308 04:37:21.09 J0112754 00000201 IEC130I GRTFILE DD STAT
N 0020000 SDV25 12308 04:37:21.29 J0112754 00000201 IEC130I GRTFILE DD STAT
N 0020000 SDV25 12308 04:37:21.46 J0112754 00000201 IEC130I GRTFILE DD STAT
N 0020000 SDV25 12308 04:37:21.65 J0112754 00000201 IEC130I GRTFILE DD STAT
N 0020000 SDV25 12308 04:37:21.83 J0112754 00000201 IEC130I GRTFILE DD STAT
N 0020000 SDV25 12308 04:37:22.01 J0112754 00000201 IEC130I GRTFILE DD STAT
N 0020000 SDV25 12308 04:37:22.63 J0112754 00000201 IEC130I GRTFILE DD STAT
N 0020000 SDV25 12308 04:37:22.80 J0112754 00000201 IEC130I GRTFILE DD STAT
```

# FILTER ?

- Filter messages using a pop-up panel  
→ **FIL ?**
- Results:

```
Display Filter View Print Options Search Help
-----
SDSF OPERI          Filter          Row 1 to 9 of 25    02- 81
COMMAND IN Command ==> _____ ==> CSR
E
M 0020000 S Type filter criteria. Type a / in the Column or Oper X.VTS1.G64
E fields for valid values. Press F11/23 to clear all XDMBMVS2,
N 0020000 S filter criteria. .VTS2.G59
N 0020000 S Filtering is OFF DD STAT
N 0020000 S DD STAT
N 0020000 S DD STAT
N 0020000 S DD STAT
N 0020000 S AND/OR between columns AND (AND/OR) DD STAT
N 2000000 S AND/OR within a column OR (AND/OR) 1630,XSSI
N A800000 S Column Oper Value (may include * and %) 541630,XS
M 0020000 S _____ _____ XSSIAMD0,
E _____ _____ EC.TSTPLE
N 0020000 S _____ _____ DD STAT
N 0020000 S _____ _____ DD STAT
N 0020000 S _____ _____ DD STAT
N 0020000 S _____ _____ DD STAT
N 0020000 S _____ _____ DD STAT
N 0020000 S _____ _____ DD STAT
N 0020000 S _____ _____ DD STAT
N 0020000 S _____ _____ DD STAT
```

# FILTER – Columns

Column	Description
<a href="#">SYSNAME</a>	MVS system name
<a href="#">DATE</a>	Date the message was logged, in character format. Enter the date as it is displayed
<a href="#">TIME</a>	Time the message was logged, in character format. Enter the time as it is displayed
<a href="#">DATETIME</a>	Date and time the message was logged, in date/time format. This column accepts the date format set with SET DATE. Use operators with > or <
<a href="#">JOBNAME</a>	Originating job name
<a href="#">JOBID</a>	Job ID
<a href="#">CONSOLE</a>	Console name
<a href="#">MSGID</a>	Message ID (first 8-character token of the message text)
<a href="#">MSGTEXT</a>	Message text (includes message ID). Note that because this column includes the message ID, you may want to include a leading generic pattern matching character in your filter command, for example, FIL MSGTEXT EQ *STARTED*

# PRINT to SYSOUT

- Print to SYSOUT messages from 01:00:00 to 02:00:00  
→ PT S; PT 01:00:00 02:00:00; PT CLOSE
- Results:

```
Display Filter View Print Options Search Help
-----
SDSF OPERLOG DATE 10/16/2012      6 WTORS      PRINT CLOSED 15904 LINE
COMMAND INPUT ==>                SCROLL ==> CSR _
NC0000000 SDV27      12290 01:00:00.05 TBI10001 000A0205 *DIS TRACE MONITOR
N 4200000 SDV27      12290 01:00:00.06 S0079042 000A0214 DFS4445I CMD FROM MCS/E-
S                               VPI1
MR0000000 SDV27      12290 01:00:00.06 S0079042 00000010 DFS4444I DISPLAY FROM ID
DR                               545 00000010     IMS ACTIVE TRACES
DR                               545 00000010
DR                               545 00000010     MONITOR IS INACTIVE
ER                               545 00000010     *2012290/010000*
N 0020000 SDV27      12290 01:00:00.06 S0078995 00000201 GVB686I VIPHST02 ACB ST
S                               VALUES
N 0020000 SDV27      12290 01:00:00.06 S0078995 00000201 GVB105I VIPHST02 BUFSP=
N 0020000 SDV28      12290 01:00:00.09 S0078736 00000201 GVB686I VIPHST04 ACB ST
S                               VALUES
N 0020000 SDV28      12290 01:00:00.09 S0078736 00000201 GVB105I VIPHST04 BUFSP=
N 0200000 SDV27      12290 01:00:00.18 J0080203 00000201 $HASP100 XSSCATBK ON INT
S                               SCHEDTS
N 0000000 SDV27      12290 01:00:00.34 S0079868 00000201 BMC23101 DC21 Asynchrono
N 0000000 SDV27      12290 01:00:00.34 S0079868 00000201 BMC23007 DC21 No data to
N 0000000 SDV27      12290 01:00:00.34 S0079868 00000201 BMC23101 DC21 Asynchrono
N 0000000 SDV27      12290 01:00:00.34 S0079868 00000201 BMC23007 DC21 No data to
```

# PRINT to Data Set

- Print to data set messages from 01:00:00 to 02:00:00  
→ PT D; PT 01:00:00 02:00:00; PT CLOSE
- Results:

```
COMMAND INPUT ==> _____ SDSF Open Print Data Set _____ SCROLL ==> CSR_

Data set name ==> 'R2221.RPT'
Member to use ==>
Disposition ==> NEW (OLD, NEW, SHR, MOD)

If the data set is to be created, specify the following.
Volume serial will be used to locate existing data sets if specified.

Management class ==> (Blank for default management class)
Storage class ==> (Blank for default storage class)
Volume serial ==> (Blank for authorized default volume)
Device type ==> (Generic unit or device address)
Data class ==> (Blank for default data class)
Space units ==> BLKS (BLKS, TRKS, CYLS, BY, KB, or MB)
Primary quantity ==> 500 (In above units)
Secondary quantity ==> 500 (In above units)
Directory blocks ==> (Zero for sequential data set)
Record format ==> VBA
Record length ==> 240
Block size ==> 3120
```

- Allows typing in a long MVS command and retrieve/execute a previous MVS command

→ /

- Results:

```

Display Filter View Print Options Search Help
----
SDS                                     System Command Extension
COM
NC00                                     Type or complete typing a system command, then press Enter.
N 42
S                                     ==> _____
MR00                                    ==> _____
DR
DR                                     Place the cursor on a command and press Enter to retrieve it.
DR
ER                                     => D GRS,AN,DEP                                     More: +
N 00                                     => RO *ALL,D U,TAPE,ALLOC
S                                     => D SYMBOLS
N 00                                     => @DISPLAY GLOBALUNITS
N 00                                     => D U,,,0117,1
S                                     => D U,,,0116,1
N 00                                     => D U,0116,1
N 02
S                                     Wait 1 second to display responses (specify with SET DELAY)
N 00                                     Do not save commands for the next SDSF session
N 00
N 00                                     F1=Help F5=FullScr F7=Backward F8=Forward F11=ClearLst F12=Cancel
N 00

```



# / [command] +

- When typing in a long MVS command on the primary command line and run out of room, append a plus sign (+) to display the pop-up panel  
 → /SETPROG APF,ADD,DSN=SYS1.TEST.LINKLIB+
- Results:

```

Display Filter View Print Options Search Help
----
SDS                                     System Command Extension
COM
NC00                                     Type or complete typing a system command, then press Enter.
N 42
S                                     ==>> SETPROG APF,ADD,DSN=SYS1.TEST.LINKLIB
MR00                                     ==>>
DR
DR                                     Place the cursor on a command and press Enter to retrieve it.
DR
ER                                     => D GRS,AN,DEP                                     More:      +
N 00                                     => RO *ALL,D U,TAPE,ALLOC
S                                     => D SYMBOLS
N 00                                     => @DISPLAY GLOBALUNITS
N 00                                     => D U,,,0117,1
S                                     => D U,,,0116,1
N 00                                     => D U,0116,1
N 02
S                                     Wait 1 second to display responses (specify with SET DELAY)
N 00                                     Do not save commands for the next SDSF session
N 00
N 00                                     F1=Help  F5=FullScr  F7=Backward F8=Forward  F11=ClearLst  F12=Cancel
N 00

```

# SET DELAY [0-9999 | ?]

- Specify the maximum time SDSF will wait for a response to a / command in seconds. The default is 0 (do not wait)
  - SET DELAY 2
- Results:

```
Display Filter View Print Options Search Help
-----
SDSF OPERLOG DATE 10/21/2012      6 WTORS      SET COMMAND COMPLETE
COMMAND INPUT ==>                SCROLL ==> CSR
E                                424 00000010  CONNECTED LASTS(1210202
M 8000000 SDV27      12295 15:02:55.07 S0085699 00000010  ING819I BCPII ROUTE NVS2
E                                425 00000010  CONNECTED LASTS(1210202
M 8000000 SDV27      12295 15:02:55.09 S0085699 00000010  ING819I BCPII ROUTE NVS2
E                                426 00000010  CONNECTED LASTS(1210202
M 8000000 SDV27      12295 15:02:55.10 S0085699 00000010  ING819I BCPII ROUTE NVS2
E                                427 00000010  CONNECTED LASTS(1210202
M 8000000 SDV27      12295 15:02:55.11 S0085699 00000010  ING819I BCPII ROUTE NVS2
E                                428 00000010  CONNECTED LASTS(1210202
M 8000000 SDV27      12295 15:02:55.12 S0085699 00000010  ING819I BCPII ROUTE NVS2
E                                429 00000010  CONNECTED LASTS(1210202
M 4000000 SDV28      12295 15:02:55.24 S0085577 40000010  ING819I BCPII ROUTE NVS2
E                                849 40000010  CONNECTED LASTS(1210202
M 4000000 SDV28      12295 15:02:55.26 S0085577 40000010  ING819I BCPII ROUTE NVS2
E                                850 40000010  CONNECTED LASTS(1210202
M 4000000 SDV28      12295 15:02:55.27 S0085577 40000010  ING819I BCPII ROUTE NVS2
E                                851 40000010  CONNECTED LASTS(1210202
M 4000000 SDV28      12295 15:02:55.28 S0085577 40000010  ING819I BCPII ROUTE NVS2
E                                852 40000010  CONNECTED LASTS(1210202
M 4000000 SDV28      12295 15:02:55.30 S0085577 40000010  ING819I BCPII ROUTE NVS2
```

# SET CONSOLE [name | ?]

- Change the console name to R2221A to allow messages to be received from commands when multiple SDSFs are active
  - ➔ SET CONSOLE R2221A
- Results:

```
Display Filter View Print Options Search Help
-----
SDSF OPERLOG DATE 10/21/2012      6 WTORS      SET COMMAND COMPLETE
COMMAND INPUT ==>                SCROLL ==> CSR
E                               424 00000010  CONNECTED LASTS(1210202
M 8000000 SDV27      12295 15:02:55.07 S0085699 00000010  ING819I BCPII ROUTE NVS2
E                               425 00000010  CONNECTED LASTS(1210202
M 8000000 SDV27      12295 15:02:55.09 S0085699 00000010  ING819I BCPII ROUTE NVS2
E                               426 00000010  CONNECTED LASTS(1210202
M 8000000 SDV27      12295 15:02:55.10 S0085699 00000010  ING819I BCPII ROUTE NVS2
E                               427 00000010  CONNECTED LASTS(1210202
M 8000000 SDV27      12295 15:02:55.11 S0085699 00000010  ING819I BCPII ROUTE NVS2
E                               428 00000010  CONNECTED LASTS(1210202
M 8000000 SDV27      12295 15:02:55.12 S0085699 00000010  ING819I BCPII ROUTE NVS2
E                               429 00000010  CONNECTED LASTS(1210202
M 4000000 SDV28      12295 15:02:55.24 S0085577 40000010  ING819I BCPII ROUTE NVS2
E                               849 40000010  CONNECTED LASTS(1210202
M 4000000 SDV28      12295 15:02:55.26 S0085577 40000010  ING819I BCPII ROUTE NVS2
E                               850 40000010  CONNECTED LASTS(1210202
M 4000000 SDV28      12295 15:02:55.27 S0085577 40000010  ING819I BCPII ROUTE NVS2
E                               851 40000010  CONNECTED LASTS(1210202
M 4000000 SDV28      12295 15:02:55.28 S0085577 40000010  ING819I BCPII ROUTE NVS2
E                               852 40000010  CONNECTED LASTS(1210202
M 4000000 SDV28      12295 15:02:55.30 S0085577 40000010  ING819I BCPII ROUTE NVS2
```

# SET CONMOD [ON | OFF | ?]

- Change the console name automatically, when already in use. SDSF adds \$, #, @, 1, 2, 3, 4 or 5 to the console name  
→ SET CONMOD
- Results:

```
Display Filter View Print Options Search Help
-----
SDSF OPERLOG DATE 10/21/2012      6 WTORS      SET COMMAND COMPLETE
COMMAND INPUT ==>                SCROLL ==> CSR
E                               424 00000010  CONNECTED LASTS(1210202
M 8000000 SDV27      12295 15:02:55.07 S0085699 00000010  ING819I BCPII ROUTE NVS2
E                               425 00000010  CONNECTED LASTS(1210202
M 8000000 SDV27      12295 15:02:55.09 S0085699 00000010  ING819I BCPII ROUTE NVS2
E                               426 00000010  CONNECTED LASTS(1210202
M 8000000 SDV27      12295 15:02:55.10 S0085699 00000010  ING819I BCPII ROUTE NVS2
E                               427 00000010  CONNECTED LASTS(1210202
M 8000000 SDV27      12295 15:02:55.11 S0085699 00000010  ING819I BCPII ROUTE NVS2
E                               428 00000010  CONNECTED LASTS(1210202
M 8000000 SDV27      12295 15:02:55.12 S0085699 00000010  ING819I BCPII ROUTE NVS2
E                               429 00000010  CONNECTED LASTS(1210202
M 4000000 SDV28      12295 15:02:55.24 S0085577 40000010  ING819I BCPII ROUTE NVS2
E                               849 40000010  CONNECTED LASTS(1210202
M 4000000 SDV28      12295 15:02:55.26 S0085577 40000010  ING819I BCPII ROUTE NVS2
E                               850 40000010  CONNECTED LASTS(1210202
M 4000000 SDV28      12295 15:02:55.27 S0085577 40000010  ING819I BCPII ROUTE NVS2
E                               851 40000010  CONNECTED LASTS(1210202
M 4000000 SDV28      12295 15:02:55.28 S0085577 40000010  ING819I BCPII ROUTE NVS2
E                               852 40000010  CONNECTED LASTS(1210202
M 4000000 SDV28      12295 15:02:55.30 S0085577 40000010  ING819I BCPII ROUTE NVS2
```

# Batch

# Status of Jobs (📎)

- Print status of @SSTEST\* jobs
- Code:

```
//SDSF      EXEC PGM=SDSF          <== ALSO, CAN USE PGM=ISFAFD
//ISFOUT    DD  SYSOUT=*
//ISFIN     DD  *
OWNER *
PREFIX @SSTEST*
ST
```

# Status of Jobs – JESMSGSLG (📎)

- Print PDSMAN started task JESMSGSLG
- Code:

```
//SDSF      EXEC PGM=SDSF
//ISFOUT    DD  SYSOUT=*
//FILEOUT   DD  SYSOUT=*
//*FILEOUT  DD  DSN=DATA.SET.NAME,
//*          DISP=(,CATLG,DELETE),
//*          DCB=(RECFM=FBA,LRECL=133,BLKSIZE=0),
//*          SPACE=(CYL,(5,5),RLSE),UNIT=SYSDA
//ISFIN     DD  *
ST
S PDSMAN
FIND PDSMAN
++?
FIND JESMSGSLG
++S
PRINT FILE FILEOUT
PRINT
PRINT CLOSE
```

# LOG ( )

- Print OPERLOG messages from 01:00:00 to 02:00:00
- Code:

```
//SDSF      EXEC PGM=SDSF
//ISFOUT    DD  SYSOUT=*
//LOGOUT    DD  SYSOUT=*
//*LOGOUT   DD  DSN=DATA.SET.NAME,
//*          DISP=(,CATLG,DELETE),
//*          DCB=(RECFM=FBA,LRECL=133,BLKSIZE=0),
//*          SPACE=(CYL,(5,5),RLSE),UNIT=SYSDA
//ISFIN     DD  *
LOG
PRINT FILE LOGOUT
PRINT 01:00:00 02:00:00
PRINT CLOSE
```



# ULOG (📎)

- Execute MVS command and print ULOG
- Code:

```
//SDSF      EXEC PGM=SDSF
//ISFOUT    DD  SYSOUT=*
//CMDOUT    DD  SYSOUT=*
//ISFIN     DD  *
SET CONSOLE BATCH
SET DELAY 600
ULOG
/D A,L
PRINT FILE CMDOUT
PRINT
PRINT CLOSE
```

# REXX

- Display help on using REXX with SDSF  
    → REXXH
- Results:

```

-
S
C
P
N

                                Using REXX with SDSF

Tab to a topic and press F1, or press Enter to view the topics in order.

o  Introduction                               - Search - Index -
o  Programming practices
o  Quick start
o  Add the SDSF host command environment
o  Issue SDSF commands
   - Commands for tabular panels (ISFEXEC)
   - Log panels (ISFLOG and ISFULOG)
   - Slash (/) commands (ISFSLASH)
   - Other commands (ISFEXEC)
   - Filter commands (special variables)
   - Options commands (special variables)
o  Take actions and modify columns on SDSF panels
o  Browse output and Print output
o  Examples
o  Diagnose errors in a REXX exec
o  Special variables
   F1=Help  F5=Exhelp  F7=Up  F8=Down  F10=Back  F12=Cancel

```

# COLSHELP

- Obtain REXX variable names for a specific SDSF panel  
→ COLSH
- Results:

```
Columns on SDSF Panels                                Row 76 from 1009
Command ==> _____
Sort with F5 (panel), F6 (column), F10 (title). Use Filter to filter rows.

  _ All panels      _ Descriptions
  Panel           Column      Title              Delayed? Overtime?
  --
  DA              JNAME      JOBNAME
  DA              STEPN      StepName
  DA              PROCS      ProcStep
  DA              JTYPE      Type
  DA              JNUM      JNum
  DA              JOBID      JobID
  DA              OWNERID    Owner
  DA              JCLASS     C
  DA              POS        Pos
  DA              DP         DP
  DA              REAL       Real
  DA              PAGING     Paging
  DA              EXCPRT     SIO
  DA              CPUPR      CPU%
```

# ULOG – Execute MVS Command (📎)

- Execute an MVS command and display the results
- Code:

```
/*%NOCOMMENT=====* REXX *=====*/  
/* PURPOSE: Execute MVS command (D A,L) and display output */  
/*=====*/  
  
RC          = ISFCALLS("ON")           /* Access = ON          */  
ISFCONS     = "SDSF"RANDOM()           /* CONSOLE = SDSF###    */  
ADDRESS SDSF "ISFEXEC '/D A,L' (wait" /* Execute MVS command */  
RC          = ISFCALLS("OFF")         /* Access = OFF         */  
  
DO J = 1 TO ISFULOG.0                 /* Loop through ULOG    */  
    SAY STRIP(ISFULOG.J)              /* Display output       */  
END
```

# DA ALL – Job Name and Lpar (📎)

- Obtain and display all active PDSMAN started tasks and lpar names
- Code:

```
/*%NOCOMMENT=====* REXX *=====*/  
/* PURPOSE:  Display PDSMAN Started Tasks and Lpar Names          */  
/*=====*/  
  
RC          = ISFCALLS("ON")           /* Access = ON          */  
ISFPREFIX   = "PDSM*"                 /* PREFIX = PDSM*      */  
ISFSYSNAME  = "*"                     /* SYSNAME = *         */  
ISFOWNER    = "*"                     /* OWNER = *           */  
ADDRESS SDSF "ISFEXEC DA ALL"         /* Execute SDSF 'DA ALL' */  
RC          = ISFCALLS("OFF")          /* Access = OFF        */  
  
DO K = 1 TO ISFROWS                    /* Loop thru rows      */  
  SAY "JOB NAME = "JNAME.K             /* Display JOBNAME     */  
  SAY "   LPAR = "SYSNAME.K           /* Display SYSNAME     */  
END
```

# DA ALL – Obtain STC File (📎)

- Obtain and display the JESMSG LG of the started task CICSU2A7
- Code:

```
/*%NOCOMMENT=====* REXX *=====*/  
/* PURPOSE: Obtain and display JESMSG LG the started task CICSU2A7 */  
/*=====*/  
  
ADDRESS TSO  
  "ALLOC F(FILEOUT) UNIT(VIO) NEW REUSE",      /* Output file      */  
    "CYLINDERS SPACE(5 5) RECFM(F B A)"  
  
  "ALLOC FI(ISFOUT) DUMMY"                    /* Delete screen prts */  
  
  "ALLOC F(ISFIN) UNIT(VIO) NEW REUSE",      /* Input parameters  */  
    "RECFM(F B) BLK(3120) LRECL(80)",  
    "SPACE(1 1) CYLINDERS DSORG(PS)"  
  
  QUEUE " DA ALL"                            /* Display active jobs */  
  QUEUE " OWNER"                            /* OWNER = *          */  
  QUEUE " SYSNAME *"                        /* SYSNAME = *        */  
  QUEUE " PRE CICSU2A7"                    /* PREFIX = CICSU2A7  */  
  QUEUE " FIND CICSU2A7"                  /* Cursor to CICSU2A7 */  
  QUEUE " ++?"                            /* Type ? next to job */  
  QUEUE " FIND JESMSG LG"                /* Cursor to JESMSG LG */  
  QUEUE " ++S"                            /* Select JESMSG LG  */
```

# DA ALL – Obtain STC File (Continued)

- Obtain and display JESMSG LG of the started task CICSU2A7
- Code:

```
QUEUE " PRINT FILE FILEOUT"          /* Open FILEOUT      */
QUEUE " PRINT"                        /* Print to FILEOUT  */
QUEUE " PRINT CLOSE"                  /* Close FILEOUT     */
QUEUE ""                              /* End input records */
"EXECIO * DISKW ISFIN (FINIS"         /* Write input records */

ADDRESS ISPEXEC
"SELECT PGM(SDSF)"                   /* Execute SDSF      */

ADDRESS TSO
"EXECIO * DISKR FILEOUT (STEM REC. FINIS" /* Read FILEOUT     */
"FREE FI (ISFIN ISFOUT FILEOUT)"       /* Free all files    */

DO J = 1 TO REC.0                    /* Loop thru records */
    SAY STRIP(REC.J)                  /* Display records   */
END
```



# Links

# Manuals – SDSF

Version	Manual	Link
Website	N/A	<a href="#">SDSF – Downloads</a>
Summary Card	N/A	<a href="#">SDSF – Summary Card</a>
Red Manual	SG24-7419-00	<a href="#">SDSF – Implementing REXX Support</a>
V2R01	SA23-2274-00	<a href="#">SDSF – Operation and Customization</a>
V1R13	SA22-7670-15	<a href="#">SDSF – Operation and Customization</a>
V1R12	SA22-7670-14	<a href="#">SDSF – Operation and Customization</a>
V1R11	SA22-7670-12	<a href="#">SDSF – Operation and Customization</a>
V1R10	SA22-7670-11	<a href="#">SDSF – Operation and Customization</a>
V1R09	SA22-7670-10	<a href="#">SDSF – Operation and Customization</a>
V1R08	SA22-7670-09	<a href="#">SDSF – Operation and Customization</a>
V1R07	SA22-7670-08	<a href="#">SDSF – Operation and Customization</a>
V1R06 & V1R05	SA22-7670-07	<a href="#">SDSF – Operation and Customization</a>
V1R04	SA22-7670-04	<a href="#">SDSF – Operation and Customization</a>
V1R03	SA22-7670-02	<a href="#">SDSF – Operation and Customization</a>
V1R02	SA22-7670-01	<a href="#">SDSF – Operation and Customization</a>

# Manuals – REXX

Version	Manual	Link
V2R01	SA32-0972-00	<a href="#">REXX – Reference</a>
V2R01	SA32-0982-00	<a href="#">REXX – User's Guide</a>
V2R01	SA23-2283-00	<a href="#">REXX – UNIX System Services</a>
V2R01	SH19-8160-06	<a href="#">REXX – Compiler/Library – User's Guide and Reference</a>
V2R01	SH19-8179-03	<a href="#">REXX – Compiler/Library – Diagnosis Guide</a>

# SHARE – SDSF

Session	Author	Link
15042	Chip Wood	<a href="#">SDSF for New Users Hands-on Lab</a>
14920	Chip Wood	<a href="#">SDSF Product Update for z/OS 2.1</a>
14768	Chip Wood	<a href="#">SDSF Hidden Treasures</a>
11701	Chip Wood	<a href="#">Accessing SDSF data using REXX and JAVA</a>
10644	Chip Wood	<a href="#">What's new in SDSF z/OS V1.13?</a>
8919	Chip Wood	<a href="#">SDSF: What's New in z/OS 1.12?</a>
2677	Dave Danner	<a href="#">z/OS 1.9 JES2 and SDSF: User Experiences With Migration and Using the New Features</a>
2672	Tom Wasik	<a href="#">SDSF for Intermediate Users</a>
2671	Bill Keller	<a href="#">SDSF Changes for z/OS V1R7</a>
2664	Chip Wood	<a href="#">SDSF REXX</a>
2663	Chip Wood	<a href="#">What's new in SDSF z/OS V1.10?</a>
2655	Chip Wood	<a href="#">SDSF z/OS V1.9 Preview</a>
2343	Chip Wood	<a href="#">SDSF for New Users</a>
2341	Rod Freak	<a href="#">SDSF REXX in a Production Environment – User Experience</a>

# SHARE – REXX

Session	Author	Link
16722	Liam Doherty	<a href="#">Using REXX for IBM Mainframe Application Development</a>
16691	Tracy Dean	<a href="#">REXX Language Coding Techniques</a>
16616	Bruce Schaefer	<a href="#">RACF and REXX - A Marriage Made in Heaven!</a>
16474	John Franciscovich	<a href="#">Introduction to REXX Workshop</a>
15229	Barry Lichtenstein	<a href="#">An Introduction to Using REXX with Language Environment</a>
14019	Brian Marshall	<a href="#">REXX programming for the z/OS programmer</a>
11751	Thomas Conley	<a href="#">Rexx Power Tools – The PARSE Command</a>
11701	Chip Wood	<a href="#">Accessing SDSF Data from Rexx and Java</a>
10425	Eric Rosenfeld	<a href="#">Analyzing Your RACF Database Using REXX</a>
7485	Thomas Conley	<a href="#">Learn to Program in Rexx – Hands-on Lab</a>
5490	Mike Onghena	<a href="#">RACF's R_admin Interface: Now Served with REXX!</a>
2344	Chip Wood	<a href="#">SDSF Rexx API Usage Tutorial</a>
2341	Rod Feak	<a href="#">SDSF Rexx in a Production Environment – User Experience</a>
1579	David Ashley	<a href="#">Using Rexx Compiler Hands-on Lab</a>
1569	Ahilan Rajadeva	<a href="#">Rexx and z/OS UNIX Services</a>

Complete your session evaluations online at [www.SHARE.org/Seattle-Eval](http://www.SHARE.org/Seattle-Eval)

# Websites ( )

Link
<a href="#">ABCs of Systems Programming</a>
<a href="#">Andy's MVS Page</a>
<a href="#">Cardett Associates – Database Query Tools</a>
<a href="#">CBT Tape</a>
<a href="#">DFSORT – Documentation and Code</a>
<a href="#">GSF Software – Downloads</a>
<a href="#">ISPF – Manuals and Tools</a>
<a href="#">ISPF – Request For Enhancement (RFE)</a>
<a href="#">Kenneth Tomiak – Stuff</a>
<a href="#">Ken's Universe</a>
<a href="#">Leonard Woren – Free Stuff</a>
<a href="#">Lionel B. Dyck – Freeware</a>
<a href="#">Mark's MVS Utilities</a>
<a href="#">Michael Joseph Clearly – Freeware</a>

# Websites (📎)

Link
<a href="#">Parallel Sysplex – Tools and Wizards</a>
<a href="#">PDS2PDS – PDS Comparison</a>
<a href="#">Planet MVS</a>
<a href="#">Redbooks – PDFs and Code</a>
<a href="#">Review – Browser and Editor</a>
<a href="#">REXX – Language Association</a>
<a href="#">Schlabb – REXX, TCPIP, etc.</a>
<a href="#">SDSF – Home Page</a>
<a href="#">SDSF – MODEL Examples</a>
<a href="#">SDSF – REXX Examples</a>
<a href="#">SHARE – Conference Proceedings</a>
<a href="#">Simo Time Enterprises – Programming Code Examples</a>
<a href="#">TASID – Downloads</a>
<a href="#">VM – Download Packages</a>

# Websites (📎)

Link
<a href="#">Watson &amp; Walker – Tuning Letter</a>
<a href="#">WLM – Downloads</a>
<a href="#">ZOS – V1R13 – PDF Manuals</a>
<a href="#">ZOS – V2R01 – PDF Manuals</a>



*Any questions or comments please contact*

*Bruce Koss*

*Wells Fargo Mainframe Operating Systems Support*

*[Bruce.Koss@WellsFargo.com](mailto:Bruce.Koss@WellsFargo.com)*

*(704) 600-8416*



#SHAREorg



SHARE is an independent volunteer-run information technology association  
that provides **education, professional networking and industry influence.**

