

# Mainframe and Mobile: Perfect Together 16036

*Monday, March 2, 2015: 3:15PM-4:15PM*

*Ron Piracci, Jason Fournier*

*Verizon*



#SHAREorg



SHARE is an independent volunteer-run information technology association that provides **education, professional networking and industry influence.**



# Why is the Mainframe & Mobile Perfect together?

- Backend systems already in place
- Capable of workload handling
  - IBM Mobile Workload Pricing
- Almost no new code to original programs
  - May need an adapter
- Tools already in place
  - z/OSMF REST APIs, CICS Web Services, z/OS Connect, etc.

# What did we try to accomplish?

- Lower MTTR
  - Can see all systems together to determine if one failure may have caused collateral damage
- Meet SLA's
  - Bring systems up quicker when less time is wasted checking systems
- Quicker troubleshooting/problem resolution
  - Allows techs to work quicker on bridges to determine problems by being able to isolate real issues quicker

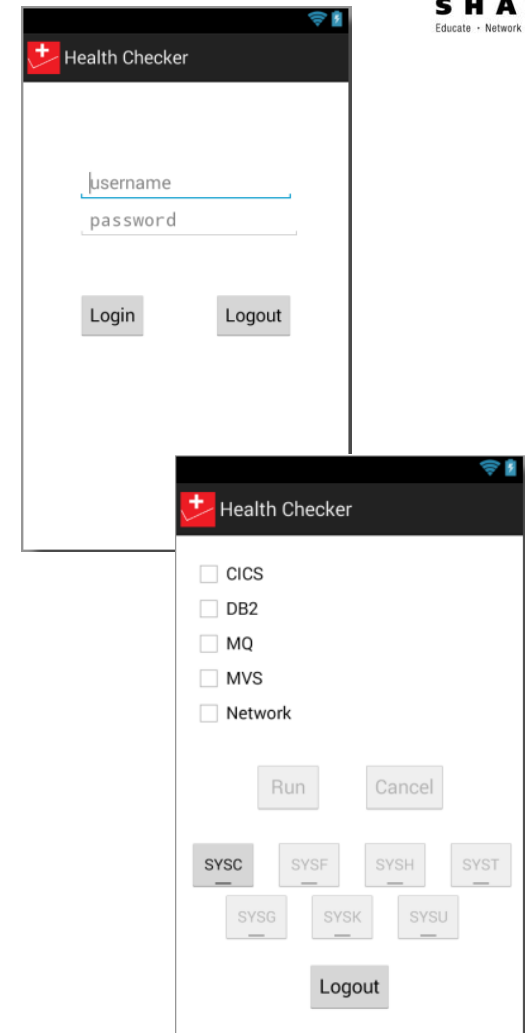
# Why did we need a mobile app?

- Ease of use
  - Easy GUI and minimal interaction needed
- Availability (can access anywhere)
  - Whether on-call or just curious
- Speed - Current process lengthy
  - Laptops take too long
    - Boot/awake, VPN/reconnect, start session, run jobs, decipher results



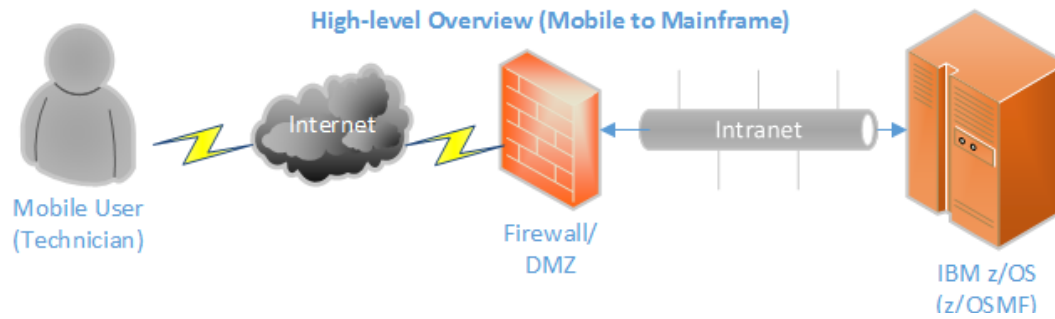
# How does the app work?

- Login Screen
  - Login to system
  - Input validation
  - HTTPS, certificate verification
  - Return LTPA2 token
- Main Menu
  - Allows one or more health checks to run
  - Will run on one LPAR

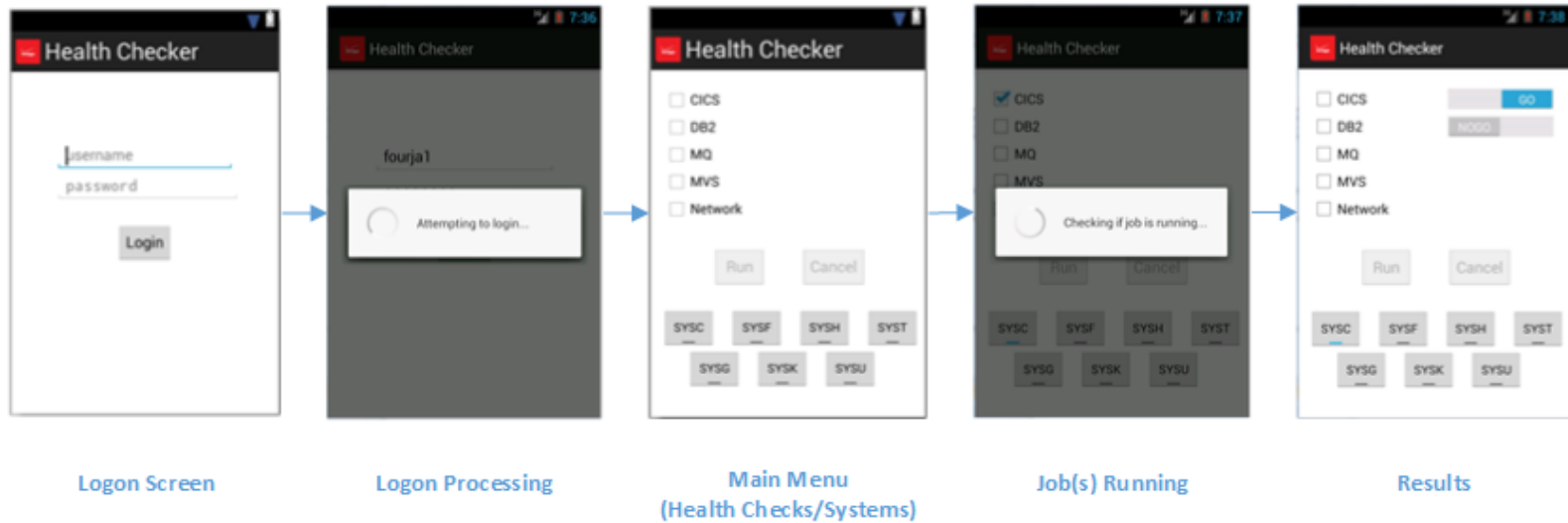


# How does the app work? (Cont'd)

- Health Checks
  - Check if health check is running or has run recently
    - If it is, we will piggy back off the running job
    - If run recently, will use those results and not run again
    - Remember, lots of people wanting updates
  - If it is not, submit new job
- Results
  - Show a simple GO/NOGO
  - Either everything is fine, or something is wrong
  - Allows for quick status while waiting for on-call

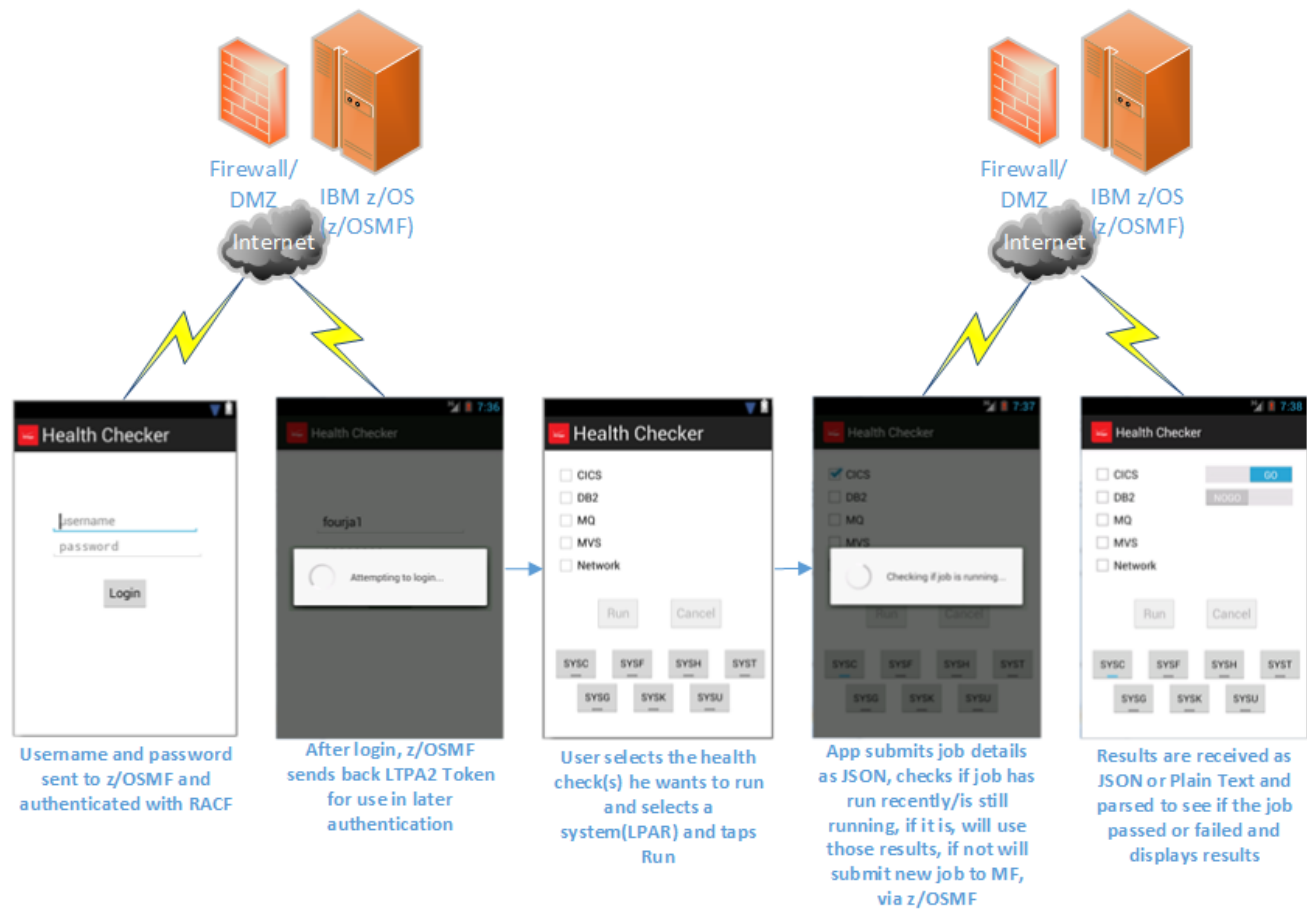


**Mobile Workflow**



# General Flow

Shows high-level descriptions for each Activity.



# Detailed Flow

Shows each Activity purpose and description.



# Why did we use REST/JSON?

- SOAP is dying (don't fool yourselves, it is!!)
- SOAP is complicated to use/setup/consume
- JSON is the new standard being used
- Widely accepted and easy to use
  - SDK's are supporting it
    - Android is very well supported
    - iOS is just called something different, but supported
  - Use across OS's and devices including web pages
    - JSON remains the same regardless
- Lightweight!!

# What development approach did we take?

- Tools, SDK, etc.
  - Xcode
    - Need a Macintosh
    - Need developer account (Enterprise for in-house apps)
  - Android Developer Toolkit (Eclipse)
    - Use PC
    - No developer account

# What were our limitations?

- Batch jobs only
- No true SDSF output
- This has changed
  - TSO/E address space services
  - z/OS data set and file REST interface



# What problems did we have?

- Certificate handling
  - Self signed certificates CA not recognized by SDKs
- Internal proxy during development
  - Needed a way to check and auto login if found
- Integration with EMP Team
  - Our internal team with processes in place to allow red to green zone traffic securely
- Lack of testers
  - Needed more people with wider variety of devices and OS versions

# Things to look out for

- Security
- MITM (Man-In-The-Middle) Attacks
- Version Control
- Source Code repository



# Things to look for (Cont'd)

- Security
  - MITM Attacks
    - Use certificates!! Verify, verify, verify!
  - Don't "cheat" yourselves (or your company)
    - Do not bypass certificates
    - Check server names against certificates
    - Figure the code out, or leave yourselves open
    - HTTPS does not mean anything if you bypass certificates



# Things to look for (Cont'd)

- Version Control
  - Makes sure app is current
    - Allows you to know what users have
    - Keeps help desk support in sync
  - Keeps security in check
    - When bugs are found, force the next upgrade
  - All users on same code base
    - Helps troubleshooting and communication between team members when using the exact same app version

# Things to look for (Cont'd)

- Source Code repository
  - Github
    - Not controlled locally, usually
  - Xcode
    - Stored on local machine, susceptible to hard drive crash
  - Saving versions on hard drive
    - Archiving
    - Requires a lot more space



# What else could we have done?

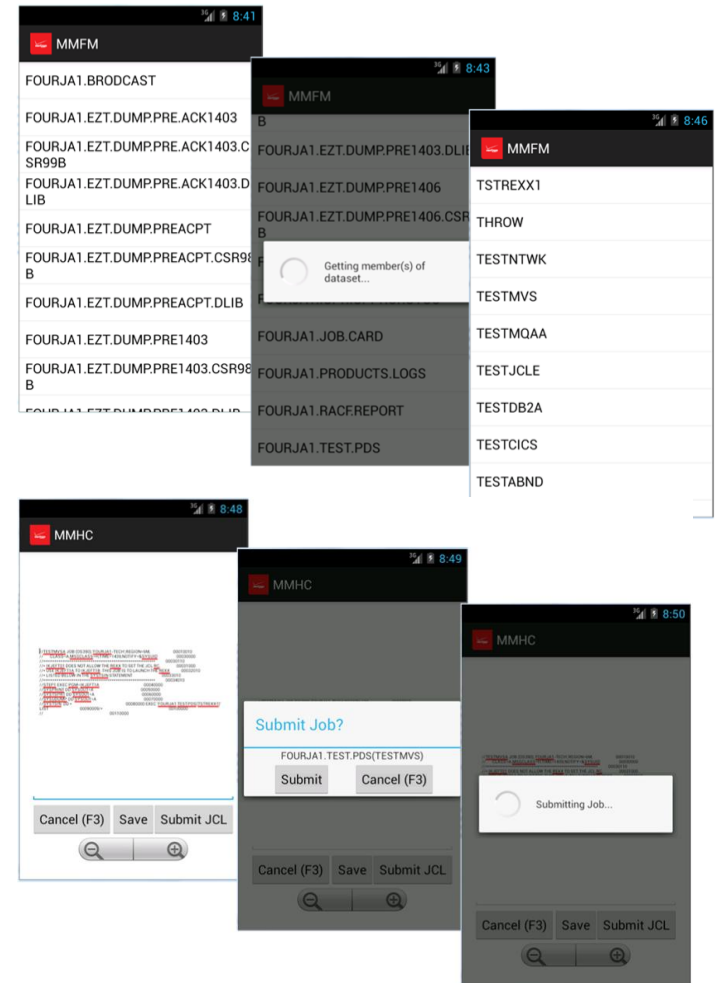
- Worklight (IBM MobileFirst)
  - Prevents double work (saves time = saves money)
    - Creates a version for iOS and Android
    - Uses same code base
  - Requires Linux or Solaris
  - There are advantages especially if your company does not have a process already in place (red to green zone)

# What are our future plans?

- z/OS Connect
  - Installed but not configured
- Further exploit of z/OSMF
  - Using other REST services
- Maybe Worklight
  - We have most functionality already in place
  - Would have to maintain 2 code bases without

# What new apps are in our pipeline?

- Mobile Mainframe Filemanager
  - Display all DSNs
  - Allow editing of members (JCL)
  - Allow submitting of jobs
  
- Mobile Mainframe Quick access
  - Run frequent used jobs quickly
  - Edit JCL
  - Submit jobs



# Going forward, things to think about...

- What OS to develop for?
  - iOS
  - Android
  - Windows Mobile
  - Blackberry
- Phone, tablet, or both?
  - What data is being displayed
  - Where is the user base using the data (wi-fi, cellular)
  - How many people have which kind of device
  - Become familiar with your GUI options
  - Think through your GUI layout (wireframe it!!!)



# Questions???



# Contact Information

- Ron Piracci

[ron.piracci@verizonwireless.com](mailto:ron.piracci@verizonwireless.com)

Work: 480-783-5157

- Jason Fournier

[jason.fournier@verizonwireless.com](mailto:jason.fournier@verizonwireless.com)

Work: 949-286-7896

## And of course, some links...

- IBM MobileFirst Platform Foundation 6.3 requirements
  - <http://www-969.ibm.com/software/reports/compatibility/clarity-reports/report/html/osForProduct?deliverableId=1404132386734>
- [http://www-01.ibm.com/common/ssi/ShowDoc.wss?docURL=/common/ssi/rep\\_ca/0/877/ENUSZP14-0280/index.html&lang=en&request\\_locale=en](http://www-01.ibm.com/common/ssi/ShowDoc.wss?docURL=/common/ssi/rep_ca/0/877/ENUSZP14-0280/index.html&lang=en&request_locale=en)