

(E)JES Update

Ed Jaffe
Phoenix Software International

Aug 13, 2013
Session Number 14348



Compatibility Matrix

Operating System	V5R3 09/13*	V5R2 09/12	V5R1 09/11	V4R8 09/10
z/OS 2.1	JES2/JES3	JES3		
z/OS 1.13	JES2/JES3	JES2/JES3	JES2/JES3	JES3
z/OS 1.12	JES2/JES3	JES2/JES3	JES2/JES3	JES2/JES3
z/OS 1.11	JES2/JES3	JES2/JES3	JES2/JES3	JES2/JES3
z/OS 1.10	JES2/JES3	JES2/JES3	JES2/JES3	JES2/JES3
z/OS 1.9	JES2/JES3	JES2/JES3	JES2/JES3	JES2/JES3
z/OS 1.8	JES2/JES3	JES2/JES3	JES2/JES3	JES2/JES3
z/OS 1.7		JES2/JES3	JES2/JES3	JES2/JES3
z/OS 1.6			JES2/JES3	JES2/JES3
z/OS 1.5				JES2/JES3

- V5R3 GA is scheduled for September 2013.
- New release required to support z/OS 2.1 JES2
- z/OS 2.1 JES3 support rolled back to V5R2.
- V4R8 became stabilized at the end of March 2013.

Minimum OS Level and W-OSLVL Delay

Jobs Resources Develop Tools Filter View Options Help

```

INPUT      59S   0X   4W   55H                               Row 1 of 59
Command ==>                               Scroll ==> CSR
Cmd JobName  JobID      QTime      Spin System-Affinity TGNum TGPct MinOSLvl
<-----/-----
SYMBOLS     J0172445  12:18:24.62                1   .00  z 2.1.0
WAIT4REP     J0138872  15:55:09.39 SPIN                1   .00
WAIT4REP     J0138871  15:13:53.70          SBO                1   .00
LOGSAVA0     J0040007  00:01:00.77 SPIN SAO                3   .00
LISTCAT8     J0038176  16:48:16.62 SPIN                1   .00
F1=Help      F3=Exit      F7=Up          F8=Down      F10=Left     F11=Right    F12=Cancel

```

File Edit Edit_Settings Menu Utilities Compilers Test Help

```

VIEW      EDJXADM.A.CNTL(SYMBOLS) - 01.00                Columns 00001 00072
Command ==>                               Scroll ==> CSR
***** ***** Top of Data *****
000001 //SYMBOLS JOB 1,JAFFE,CLASS=D,MSGCLASS=T,NOTIFY=&SYSUID
000002 // EXEC PGM=IEFBR14
000003 //SYSIN DD *,SYMBOLS=JCLONLY
000004 SYMBOLS
000005 //
F1=Help      F3=Exit      F4=Expand      F5=Rfind      F6=Rchange    F12=Cancel

```

MA D 04/015

z/OS 2.1 JES2 Eight-Character Job Classes and Job Class Groups

- z/OS 2.1 JES2 now supports eight-character job classes and allows job classes to be associated with named, eight-character job class groups.
 - Features previously available to JES3 customers only.
- Where ambiguity is possible, the new JES2 syntax for job class lists is used for tabular columns and overtypes:
 - ABCDE means classes A, B, C, D, and E
 - (ABCDE) means job class or group ABCDE
 - (ABCDE,FGHIJ) denotes two classes or groups
- (E)JES retrofits much JES3 job class function to JES2
 - Up to four, eight-character job class wildcard masks
 - JES2 tabular displays reworked to look more like JES3
 - Job class group column shown for z/OS 2.1 JES2+

Jobs Resources Devices Tools Filter View Options Help									
STATUS 3,499S 53X 3,549W 56H 45T 16,953,521 Records					Row 128 of 3703				
Command ==>					Scroll ==> CSR				
Cmd	JobName	JobID	Class	Group	SrvClass	Scheduling-Env	Mode	ARM	PrtD
<-----/----->									
SYMBOLS	J0172445	D	BATCH						LOCA
EDJXADM	T0172444	TSU							LOCA
CICSA	S0172443	STC							LOCA
FTPD	S0172435	STC							LOCA

Jobs Resources Devices Tools Filter View Options Help											
INIT PHXHQ2 Initiator Status										Row 1 of 20	
Command ==> _										Scroll ==> CSR	
Cmd	Num	Status	Classes	JobName	JobID	C	ASID	Owner	SysName	JMbr	JE
-----/----->											
	1	INACTIVE	(ABCD)				004C		MVS70	S70	JE
	2	INACTIVE	A				004D		MVS70	S70	JE
	3	INACTIVE	A				004F		MVS70	S70	JE

Jobs	Resources	Devices	Tools	Filter	View	Options	Help				
MVSA0 CLASS		PHXHQ2 Class Status						Row 49 of 608			
Command ==>								Scroll ==> PAGE			
Cmd	Class	Mbr	Stat	Group	Mode	WaitCt	RunCt	HldCt	MaxRun	MbrAff	JobRC
	D	S60		BATCH	WLM	0	0	0	*	YES	MAXRC
		S70								YES	MAXRC

Job Class Mask Length Control

- JCMLLEN command sets job class mask length to 1 or 8
- The setting also affects the Entry Panel and Primary Selection Criteria pop-ups:
 - With JCMLLEN=1 there is one eight-character job class mask input field. It is treated as eight, one character job classes.
 - With JCMLLEN=8 there are four eight-character job class mask input fields. Each field is treated as an eight-byte job class mask. (Wildcard characters accepted.)
- JCMLLEN can also be set from the Options Panel or by using the **Set job class mask length...** dialog, accessed from the **Filter** pull-down under ISPF
- This feature applies to both JES2 and JES3

Jobs Resources Devices Tools Filter View Options Help

2013/07/26 (2013.207) (E)JES Entry Panel MVSA0/SA0 V5R3.0 17:49

Command ==> jcm len 1

Default Command ==> ST

More: +

Job Names/Nums ==> ==> ==> ==>

==> ==> ==> ==>

Owner IDs ==> ==> ==> ==>

==> ==> ==> ==>

Origins ==> ==> ==> ==>

Destinations ==> ==> ==> ==>

Job Classes ==> ABCDEFGH ==> ==> ==>

Jobs Resources Devices Tools Filter View Options Help

2013/07/26 (2013.207) (E)JES Entry Panel MVSA0/SA0 V5R3.0 17:49

Command ==> jcm len 8

Default Command ==> ST

More: +

Job Names/Nums ==> ==> ==> ==>

==> ==> ==> ==>

Owner IDs ==> ==> ==> ==>

==> ==> ==> ==>

Origins ==> ==> ==> ==>

Destinations ==> ==> ==> ==>

Job Classes ==> ABCDEFGH ==> ==> ==>

Jobs Resources Devices Tools Filter View Options Help



STATUS 3,466S 51X 3,518W 56H 45T 16,953,521 Records Row 1 of 3670

Command ==> jcm len 1;p_

Cmd	JobName	JobID	Sta
EDJX1	T0172583	ACT	
SMFDUMP	S0172582	QUE	
NETTESTR	S0172581	ACT	
EJESC510	S0172579	ACT	
EJESC510	S0172580	ACT	
EJESC520	S0172578	ACT	
EJESC520	S0172577	QUE	

Jobs Resources Devices Tools Filter View Options Help

Primary Selection

Job Names				
Owner IDs				
Origins				
Destinations				
Job Classes				
Sysout Classes				
Display Jobs	YES	(YES or NO)		

Row 1 of 3670
Scroll ==> CSR
axComp Records

Jobs Resources Devices Tools Filter View Options Help

STATUS 3,466S 51X 3,518W 56H 45T 16,953,521 Records Row 1 of 3670

Command ==> jcm len 8;p_

Cmd	JobName	JobID	Sta
EDJX1	T0172583	ACT	
SMFDUMP	S0172582	QUE	
NETTESTR	S0172581	ACT	
EJESC510	S0172579	ACT	
EJESC510	S0172580	ACT	
EJESC520	S0172578	ACT	
EJESC520	S0172577	QUE	
EJESCAS	S0172575	ACT	
EJESCAS	S0172576	ACT	
EDJX1	T0172574	QUE	
EDJXADM	T0172573	QUE	
EDJX1	T0172572	QUE	

Jobs Resources Devices Tools Filter View Options Help

Primary Selection

Job Names				
Owner IDs				
Origins				
Destinations				
Job Classes				
Sysout Classes				
Display Jobs	YES	(YES or NO)		
Display STCs	YES	(YES or NO)		
Display TSUs	YES	(YES or NO)		
Display ATXs	YES	(YES or NO)		

Row 1 of 3670
Scroll ==> CSR
axComp Records

F1=Help F11=Clear F12=Cancel

C 0000	76
B S878	14,103
B S622	4,200
C 0000	31
C 0000	33

Enhanced Symbolic Substitution in Filters (Primary, Additional, Metafilters, etc)

- V3R5 introduced *Environment Variables*—symbols derived from the current environment that can be used in filters
 - These have been renamed to *(E)JES Environment Symbols*
- Beginning in this release, z/OS system symbols can also be used. If an ampersand remains after substitution of (E)JES environment symbols, a z/OS symbol substitution service is invoked to process the string.
- Both static (e.g., &SYSNAME) and dynamic (e.g., &WDAY) symbols are supported

```
Jobs Resources Devices Tools Filter View Options Help
2013/08/05 (2013.217)          (E)JES Entry Panel          MVS60 V5R3.0 10:45
Command ==> J=(A&SYSCONE.B,&WDAY.*) _
Default Command ==>

Job Names/Nums ==> A60B          ==> MON*          ==>          ==>
                  ==>          ==>          ==>          ==>

More:          +
```

Substitution for Metafilters is Dynamic

- Most filters are substituted immediately when the filter is established. Substitution for metafilters occurs at the time the filter is actually used. What you type is unchanged.

```

Jobs Resources Devices Tools Filter View Options Help
STATUS 3,295S 145X 3,115W 35H 0T 44,583,780 Records Row 1 of 3295
Command ==> fil own=a&sysname.b* Scroll ==> CSR
Cmd JobName JobID Status Process StepNum StepName JP MaxComp Records
-----
E
E
M
D
A
A
A
A
A
A
Jobs Resources Devices Tools Filter View Options Help
Metafilters
Filter Help
FILTER STATUS (MIN) Row 1 of 1
Command ==> Scroll ==> CSR
Cmd Column Title Op Value Bool
-----
OWNER Owner = A&SYSNAME.B*
***** Bottom of Data *****

```

Console Name Collision Resolution

- “Default” console name is chosen by EJESUX10
- Standard behavior is to make the default name = userid
- Many customers implement our distributed modification to derive the last character of the console name from the ISPF window id (1-9,A-W)
 - This allows unique consoles within an ISPF session
- In this release we allow a placeholder character to be inserted anywhere into the console name (e.g. JAFFE%)
- If the placeholder character is present, (E)JES will replace it with blank (only if last character) and then retry again and again with 0-9,A-Z until the console is successfully activated.

Previously Documentation Was Distributed in the Following Formats



- IBM BookManager books
 - Individual parts in SEJEPUBS and SEJEPSHF target libraries
- Adobe PDF documents
 - Individual parts in SEJEPDF target library
- HTML documents
 - A single part (zip file) in SEJEHTML target library
 - These HTML documents were built by exporting Microsoft Word documents. They were poorly formatted, intended for use only by seeing-impaired individuals who required HTML for their assistive technologies.

Documentation Distributed with V5R3

- Eclipse documentation plugins for use with IBM InfoCenter
- Adobe PDF documents
- HTML documents (generated from the Eclipse plugins)
- Each format is delivered as a single part in the new SEJEDOC target library
- New sample job EJES\$DOC used to copy the three parts to z/OS UNIX directories of your choosing

Format	File Name
Eclipse	com.psi.ejes_doc.5.3.0.jar
Adobe	ejes_pdf.5.3.0.zip
HTML	ejes_html.5.3.0.zip

Search: Go [Scope: Phoenix](#)

Contents

**EJES V5R3 Documentation**

- (E)JES Reference
- (E)JES Installation
- (E)JES Messages
- (E)JES Release Information
- Chapter 1. (E)JES RELEASE INFORMATION
- Chapter 2. Changes for Version 5, Release 3.0
 - z/OS 2.1 Support
 - (E)JES Web Technology Preview (New)
 - Tabular Displays
 - Programmable API Enhancements
 - Customer Application Infrastructure Enhancements
 - Miscellaneous Enhancements
 - Documentation
 - Supported Documentation Formats**
 - BookManager Interface Updates
 - InfoCenter Interface (New)
- Chapter 3. Changes for Version 5, Release 3.0
- Chapter 4. Changes for Version 5, Release 3.0
- Chapter 5. Changes for Version 4, Release 3.0
- Chapter 6. Changes for Version 4, Release 3.0
 - Readers Comment Form
- (E)JES Security
- TP Monitor Messages

EJES V5R3 Workstation Component Documentation

[\(E\)JES V5R3 Documentation](#) > [\(E\)JES Release Information](#) > [Chapter 2. Changes for Version 5, Release 3.0](#) > [Documentation](#)

Supported Documentation Formats

(E)JES documentation is now distributed in three formats:

Format	File Name	Where Located
Adobe PDF documents	ejes.pdf_5.3.0.zip	SEJEDOC(EJES53AD)
HTML documents	ejes.html_5.3.0.zip	SEJEDOC(EJES53HT)
Eclipse documentation plugins	com.psi.ejes.pdf_5.3.0.jar	SEJEDOC(EJES53EC)

All three formats are supported by servers running under z/OS. You can copy these files to other platforms as well.

The Eclipse documentation plugins are intended for use in an IBM InfoCenter on z/OS or other supported platform. The HTML format is a stand-alone version of the Eclipse-based documentation.

(E)JES documentation is no longer delivered in BookManager softcopy format.

Search: Go [Scope: Phoenix](#)

Contents



- (E)JES V5R3 Documentation
 - (E)JES Reference
 - Chapter 1. (E)JES REFERENCE
 - Chapter 2. Introducing (E)JES
 - Chapter 3. Using (E)JES
 - Chapter 4. (E)JES Displays
 - Chapter 5. (E)JES Commands
 - Chapter 6. Using the (E)JES Batch I
 - Chapter 7. Using the (E)JES Applic
 - Chapter 8. Using the (E)JES REXX A
 - Chapter 9. Using the (E)JES Java Ap
 - Chapter 10. Extending (E)JES Using
 - Chapter 11. Using EJESMAIL to Em**
 - Chapter 12. Running ISFCALLS Ap
 - Chapter 13. Using the Phoenix TP
 - Chapter 14. Controlling the CAS S
 - Chapter 15. Distributed Sample Pr
 - Readers Comment Form
 - (E)JES Installation
 - (E)JES Messages
 - (E)JES Release Information
 - (E)JES Security
 - TP Monitor Messages
- (E)JES V5R3 Workstation Component D
- CONDOR MVS 21.1 Documentation

[\(E\)JES V5R3 Documentation](#) > [\(E\)JES Reference](#)

Chapter 11. Using EJESMAIL to Email JES Job SPOOL Data

EJESMAIL is a REXX exec written to help customers send textual job output via email. It is not part of the Customer Application Infrastructure (CAI), but it does rely on some of the CAI utilities.

EJESMAIL can be invoked as a TSO/E foreground command, from the z/OS UNIX OMVS command prompt, as a batch job step, or under System REXX.

EJESMAIL supports the same three mail transport agents supported by the CAI email plug-in and utilities: NJE, direct sockets, and XMITIP.

EJESMAIL is invoked with the following syntax. Optional parameters must appear in the order shown:

```
>>—EJESMAIL—fromemail—toemail
                                     <—
                                     CC ccemail
                                     <—
                                     BCC bccemail
                                     <—
>>—(—NJE:njenode:smtouserid
      —SOCKETS:serveripaddr:serveripport
      —XMITIP
      —JOB:jobname:jobid
>—
      <—
      —SUBJECT:"subjectline"
      —DD:ddname.stepname.procstep
>>
```

InfoCenter Search Integration Under ISPF

- **F6** is now assigned to the **INFO** command
 - Previously **F6** was assigned to the **BOOK** command
 - **BOOK** command moved to **F18** (Shift+F6)
- **INFO** command with no explicitly-specified search words and cursor not positioned results in display of InfoCenter Search pop-up
 - Search words can be entered and search launched
 - InfoCenter parameters pop-up is requested by pressing **F6** on InfoCenter Search pop-up
- **INFO** command with explicitly-specified search words or cursor positioned to word within scrollable area initiates an InfoCenter search

Jobs Resources Devices Tools Filter View Options Help

InfoCenter Search

2013/07/13

l ==> CSR

---13----->

To search the InfoCenter, type a search string below.
To define InfoCenter parameters, press F6.

Search for

F1=Help F6=Setup F11=Clear F12=Cancel

IEA519I IODF DSN = SYS4.IODFA0

IEA520I CONFIGURATION ID = ZOS . IODF DEVICE NUMBER = 8100

IEA091I NUCLEUS 1 SELECTED

IEA370I MASTER CATALOG SELECTED IS CATALOG.MCATZ.PHXHQ

IEA009I SYMBOLIC DEFINITIONS WILL BE READ FROM: 008

IEASYM00

IEASYM18

IEE252I MEMBER IEASYM00 FOUND IN SYS2.PARMLIB

IEE252I MEMBER IEASYM18 FOUND IN SYS2.PARMLIB

*IEA008I SYSTEM PARMS FOLLOW FOR z/OS 02.01.00 HBB7790 011

IEASYS18

IEASYS02

F1=Help F3=Exit F6=Info F7=Up F8=Down F10=Left F11=Right

F12=Cancel

MA D

07/019

InfoCenter Setup Pop-up

- Accessed via **F6** from InfoCenter Search pop-up
- Specify URL of InfoCenter server. If not specified, defaults as follows based upon the current z/OS release:
 - <http://publib.boulder.ibm.com/infocenter/zos/v2r1>
 - <http://publib.boulder.ibm.com/infocenter/zos/v1r13>
 - <http://publib.boulder.ibm.com/infocenter/zos/v1r12>
 - <http://publib.boulder.ibm.com/infocenter/zos/v1r11>
- Scope defaults to **All Topics**
- Browser name and directory not required for Windows

Jobs Resources Devices Tools Filter View Options Help

InfoCenter Search

0

2013/07/13

InfoCenter Setup

URL Generation Parameters:

Server . . You can specify your Intranet server URL here (if any)

Scope . .

Workstation Browser Launch Command Parameters:

Browser These specifications are NOT required for Windows users

Directory

F1=Help F11=Clear F12=Cancel

IEASYM00

IEASYM18

IEE252I MEMBER IEASYM00 FOUND IN SYS2.PARMLIB

IEE252I MEMBER IEASYM18 FOUND IN SYS2.PARMLIB

*IEA008I SYSTEM PARMS FOLLOW FOR z/OS 02.01.00 HBB7790 011

IEASYS18

IEASYS02

F1=Help F3=Exit F6=Info F7=Up F8=Down F10=Left F11=Right

F12=Cancel

MA D

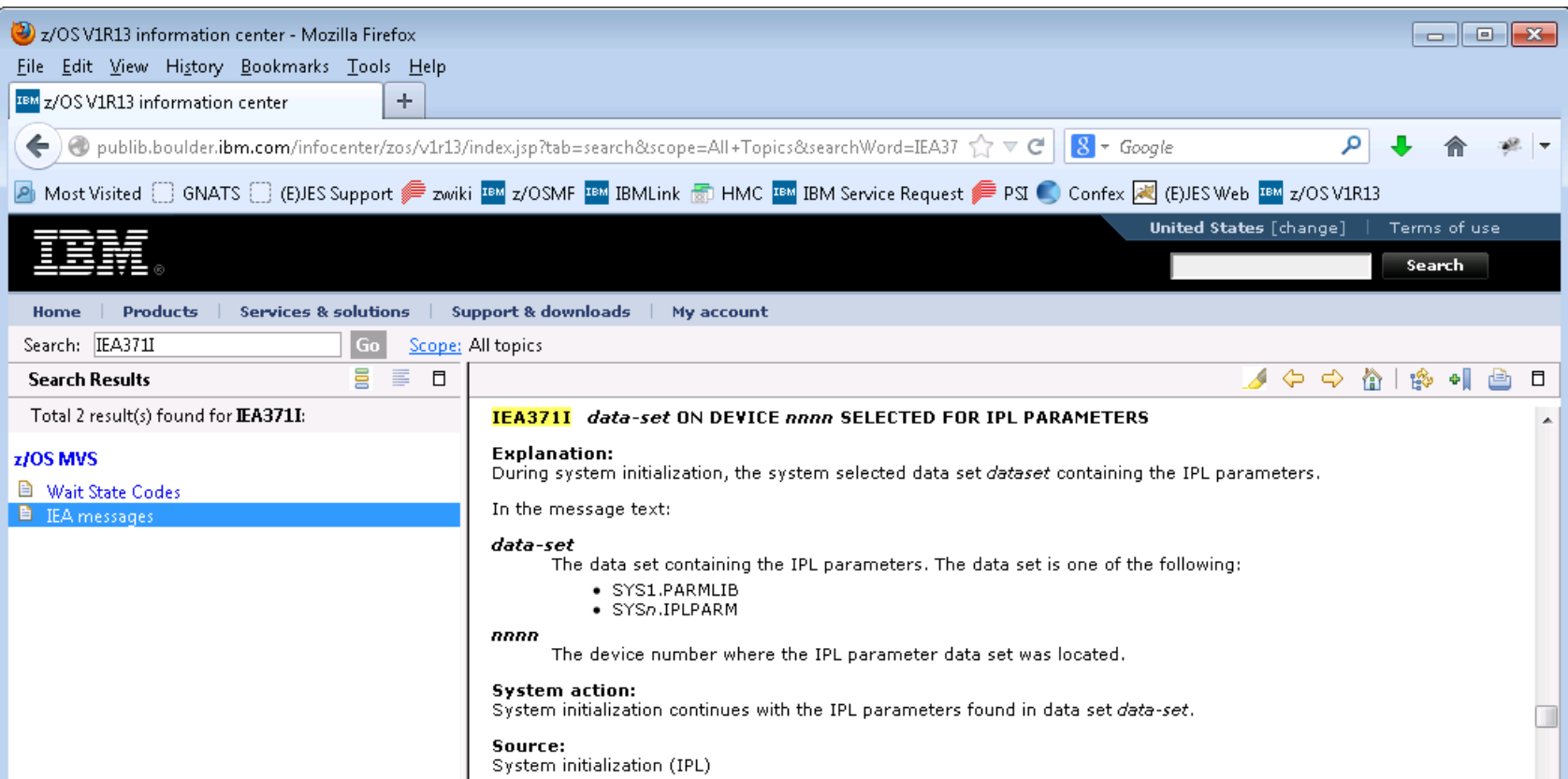
12/017

InfoCenter Search Behavior

- If ISPF Workstation Agent (WSA) connected, web browser is launched on local workstation to initiate the InfoCenter search
 - Connect WSA using WSCON command
 - Do not confuse WSA with ISPF C/S; GUI not required
- If WSA not connected, URL is displayed on 3270 screen
 - Most modern 3270 emulators provide “hot spot” support for URLs displayed within the 3270 presentation area
 - Clicking on the URL usually results in a launching of web browser to process the URL

InfoCenter Search URL

<http://publib.boulder.ibm.com/infocenter/zos/v1r13/index.jsp?tab=search&scope=All+Topics&searchWord=IEA371I>



The screenshot shows a Mozilla Firefox browser window displaying the IBM z/OS V1R13 information center search results for the keyword "IEA371I". The browser's address bar shows the URL: publib.boulder.ibm.com/infocenter/zos/v1r13/index.jsp?tab=search&scope=All+Topics&searchWord=IEA371I. The page features the IBM logo and a navigation bar with links to Home, Products, Services & solutions, Support & downloads, and My account. The search results section indicates that 2 results were found for "IEA371I". The first result is titled "IEA371I data-set ON DEVICE nnnn SELECTED FOR IPL PARAMETERS". The explanation states that during system initialization, the system selected a data set containing IPL parameters. The message text specifies the data set and the device number. The system action is that initialization continues with the found parameters, and the source is system initialization (IPL).

z/OS V1R13 information center - Mozilla Firefox

File Edit View History Bookmarks Tools Help

z/OS V1R13 information center

publib.boulder.ibm.com/infocenter/zos/v1r13/index.jsp?tab=search&scope=All+Topics&searchWord=IEA371I

Most Visited GNATS (E)JES Support zwiki IBM z/OSMF IBM IBMLink HMC IBM IBM Service Request PSI Confex (E)JES Web IBM z/OS V1R13

United States [change] Terms of use

Search

Home Products Services & solutions Support & downloads My account

Search: IEA371I Go Scope: All topics

Search Results

Total 2 result(s) found for **IEA371I**:

z/OS MVS

- Wait State Codes
- IEA messages

IEA371I data-set ON DEVICE nnnn SELECTED FOR IPL PARAMETERS

Explanation:
During system initialization, the system selected data set *dataset* containing the IPL parameters.

In the message text:

data-set
The data set containing the IPL parameters. The data set is one of the following:

- SYS1.PARMLIB
- SYSn.IPLPARM

nnnn
The device number where the IPL parameter data set was located.

System action:
System initialization continues with the IPL parameters found in data set *data-set*.

Source:
System initialization (IPL)

BookManager Support Enhanced (Ironically)



- **Set default bookshelf...** pull-down choice removed.
- Previously, BOOK command with no explicitly-specified search terms or cursor positioned to word within scrollable area, invoked BookManager READ stopping at the default bookshelf.
- Support enhanced to stop at new BookManager Search pop-up (analog of InfoCenter Search pop-up.) **F6** now displays the new Default Bookshelf pop-up.
- If default bookshelf not established, z/OS Messages and Codes bookshelf appropriate to the current z/OS release is used (e.g., EZ2MZ940 used for z/OS 1.13).



```

Jobs  Resources  Devices  Tools  Filter  View  Options  Help
----- BookManager Search -----
O
C   To search the default bookshelf, type a search string below.
C   To define the default bookshelf, press F6.
<-
C   Search for _____
I
I   F1=Help      F6=BkShelf  F11=Clear  F12=Cancel
I
IEA519I IODF DSN = SYS4.IODFA0
  
```

```

Jobs  Resources  Devices  Tools  Filter  View  Options  Help
----- BookManager Search -----
O
C   ----- Default Bookshelf -----
C   a search string below.
C   s F6.
<-
C   Type the name of the default
C   BookManager bookshelf to be
C   searched by the BOOK command.
I
I   Bookshelf . . . _____
I
IEA51
IEA52   F1=Help    F11=Clear  F12=Cancel
IEA09
      EVICE NUMBER = 8100
  
```

(E)JES Web Technology Preview

- (E)JES Web is a new, browser-based interface to (E)JES. The initial release, which we currently classify as a technology preview, allows many basic (E)JES functions to be performed.
- Phoenix intends to re-architect, enhance, and federate this technology over time. It is our intent to create a de-Facto interface to (E)JES for users that are uncomfortable navigating traditional 3270 interfaces.
- The RESTful API backing this technology will provide a framework for the creation of Eclipse plug-ins, mobile applications, and other web services clients.

(E)JES Web Technology Stack

- In addition to the wealth of technologies already inherent in the (E)JES base product, (E)JES Web leverages the following core technologies:
 - Ajax
 - C++
 - CSS3
 - HTML5
 - Java
 - Javascript
 - JNI
 - JQuery
 - JQueryUI
 - JSON
 - JSP
 - REST
- Non-core technologies include Apache Tomcat (currently used as the web server), Ifragistics igGrid, HTTP and others.

(E)JES Web Demo



Jobs ▾

Resources ▾

Devices ▾

Tools ▾

Filter ▾

Help

Logout

(E)JES®

STATUS - 33715- 129X- 3208W- 3

Functional Subsystems

37329721 LINES- 0 PAGES

JESplex Members

Job Class Groups

Job Classes

Network Connections

Network Servers

Nodes

Printers & Punches

Spool Partitions

Spool Volumes

Sysout Classes

JobName	JobID	Status	NumStep	StepName	JP	MaxComp	Records	Lines	Pages	By
MONITOR	10B01003	X-JES3	0	*JES3DSP	15		0	0	0	
NJECONS	10B01142	X-JES3	0	*JES3DSP	15		0	0	0	
LOGSAVA0	10B01274	W-OUTPUT	0		1	CC 0000	19	19	0	
LOGSAVA0	10B01278	W-OUTPUT	0		1	CC 0000	252	252	0	
LOGSAVA0	10B03284	W-OUTPUT	0		2	CC 0000	19	19	0	
LOGSAVA0	10B03288	W-OUTPUT	0		1	CC 0000	251	251	0	
TECHOFF1	10B04284	H-OPER	0	CI	6		0	0	0	
TECHOFF2	10B04285	H-OPER	0	CI	2		0	0	0	
LOGSAVA0	10B05995	W-OUTPUT	0	OUTSERV	1	CC 0000	19	19	0	
LOGSAVA0	10B05999	W-OUTPUT	0	OUTSERV	1	CC 0000	252	252	0	
LOGSAVA0	10B06000	W-OUTPUT	0	OUTSERV	1	CC 0000	8,886	8,546	0	
TIVSMPRT	10B06715	W-OUTPUT	0	OUTSERV	2	CC 0000	2,295	2,230	0	2
TIVSMPRT	10B06723	W-OUTPUT	0	OUTSERV	2	CC 0000	2,295	2,230	0	2
TIVSMPRT	10B06896	W-OUTPUT	0	OUTSERV	2	CC 0000	2,299	2,234	0	2
LOGSAVA0	10B07847	W-OUTPUT	0	OUTSERV	1	CC 0000	19	19	0	
LOGSAVA0	10B07851	W-OUTPUT	0	OUTSERV	1	CC 0000	253	253	0	
LOGSAVA0	10B07852	W-OUTPUT	0	OUTSERV	1	CC 0000	11,161	11,008	0	
SMPOREC	10B08547	H-OPER	0	PURGE	1		0	0	0	
TIVSMPRT	10B08822	W-OUTPUT	0	OUTSERV	2	CC 0000	2,307	2,242	0	2
TECHOFF1	10B09395	H-OPER	0	CI	3		0	0	0	

1 - 20 of 3372 records

Commands ▾

mvs60.phx:8080/EjesWeb/#

Refresh

STATUS - 3391S- 2X- 210W- 0H- 0T- 5496641 Records- 5485085 Lines- 0 Pages

JobName	JobID	Status	Process	CurStep	NumStep	StepName	JP	MaxComp	Records	Lines
MONITOR	J0394489	X-JES3	MONITOR	0	0	*JES3DSP	15		0	0
EDJX2	T0438983	W-OUTPUT	OUTSERV	0	1		15	CC 0000	4,969	4,969
EJES0P	J0438985	W-OUTPUT		0	4		6	CC 0000	12,623	12,592
EDJX2	T0438986	W-OUTPUT		0	1		15	CC 0000	2,352	2,352
EJE0PROF	J0438987	W-OUTPUT					6	CC 0000	17,677	17,627
EJES0P	J0438988	W-OUTPUT					6	CC 0000	12,623	12,592
EJES0P	J0438994	W-OUTPUT					6	CC 0000	12,652	12,621
EJES0P	J0438995	W-OUTPUT					6	CC 0000	12,652	12,621
EJESSUBS	J0439008	W-OUTPUT					6	CC 0008	98,745	98,514
EJESSUBS	J0439010	W-OUTPUT		0	4		6	CC 0000	99,179	98,949
EJESSUBS	J0439011	W-OUTPUT		0	4		6	CC 0000	99,181	98,951
EJESSUBS	J0439029	W-OUTPUT		0	4		6	CC 0008	98,905	98,674
EJESSUBS	J0439030	W-OUTPUT		0	4		6	CC 0000	99,292	99,062
EDJX2	T0439031	W-OUTPUT	OUTSERV	0	1		15	CC 0000	40,706	40,706
EJES0P	J0439038	W-OUTPUT	OUTSERV	0	4		6	CC 0008	12,538	12,506
EJES0P	J0439039	W-OUTPUT	OUTSERV	0	4		6	CC 0000	12,686	12,655
EJES0P	J0439041	W-OUTPUT	OUTSERV	0	4		6	CC 0000	12,676	12,645

Activity

Alter

Browse

Cancel

DJC

Data Set Status

Display

Hold

Out Desc

Release

Requeue

Restart

Run

Spin

Sys

Browse

Browse Cntl Blks

Browse JCL

Browse Job Info

Browse Job Info Extended

Browse Msg Summary

Browse Pattern

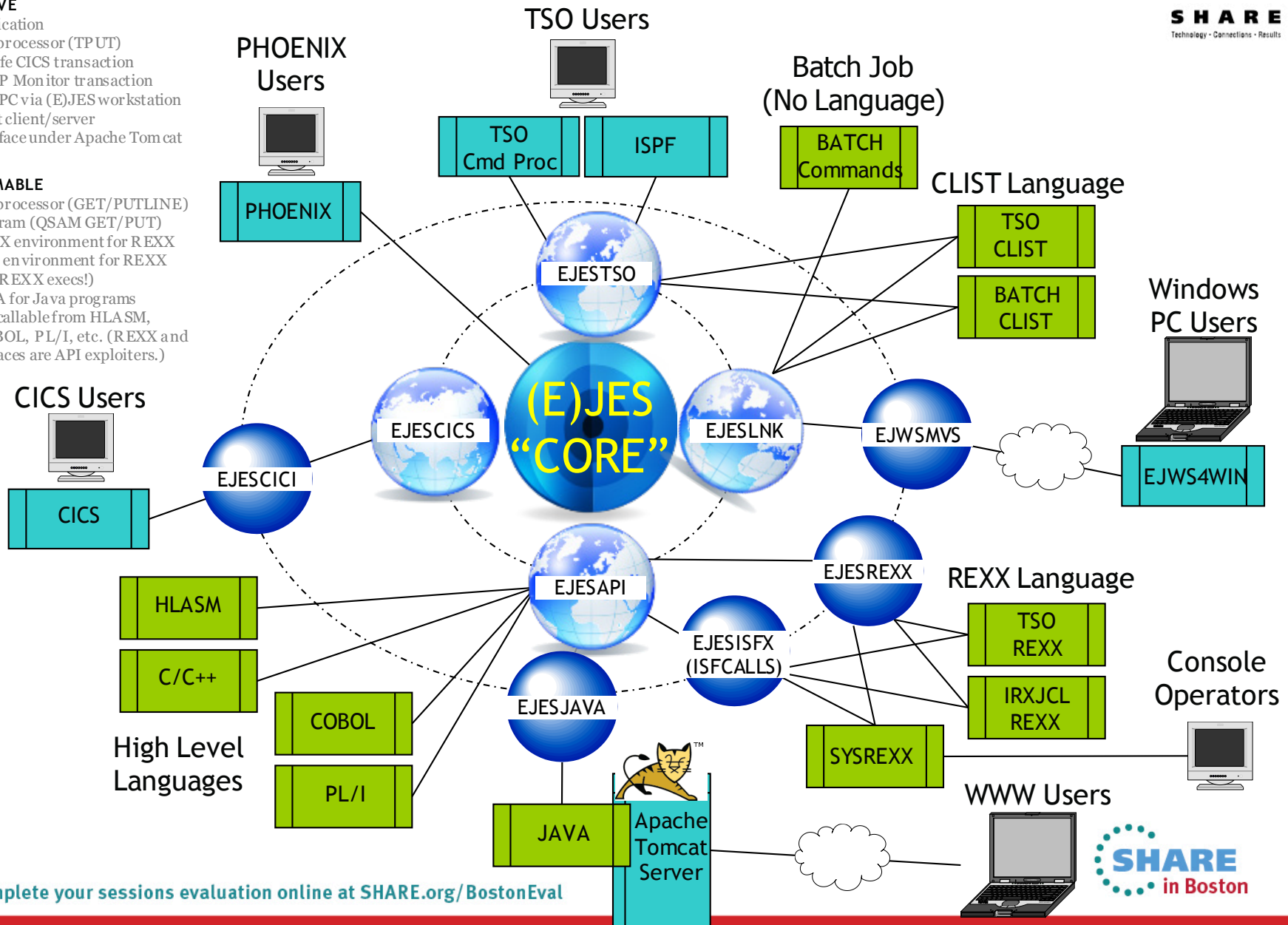
The Updated (E)JES “Solar System”

INTERACTIVE

- ISPF application
- TSO cmd processor (TPUT)
- Thread-safe CICS transaction
- Phoenix TP Monitor transaction
- Windows PC via (E)JES workstation component client/server
- Web interface under Apache Tomcat

PROGRAMMABLE

- TSO cmd processor (GET/PUTLINE)
- MVS program (QSAM GET/PUT)
- EJESREXX environment for REXX
- ISFCA LLS environment for REXX (run SDSF REXX execs!)
- EJESJAVA for Java programs
- EJESAPI callable from HLASM, C/C++, COBOL, PL/I, etc. (REXX and Java interfaces are API exploiters.)



(E)JES Web Deployment

- Each running instance of (E)JES Web must be deployed.
- A sample JCL procedure is provided. The same procedure can be shared by multiple deployments.
- Batch JCL is provided to create a small, read/write zFS file system for running an instance.
- A z/OS UNIX OMVS shell script prompts for eight basic parameters—most of which default naturally.
- The script populates the target instance file system and creates a parmlib member unique to the instance.
- An (E)JES Web instance typically runs as a started task.
- An instance is stopped via the MVS STOP command.

Improved Control of Settings Notices

- There are three settings notices that can appear on scrollable displays: **Filter**, **Option** and **View**. In prior releases, you could choose to display all of them (**ON**) or none of them (**OFF**).
- The DISPLAY command and Options panel have been updated to allow specification of a string consisting of the characters **F**, **O** and **V** (in any order) that indicates which settings notice(s) you would like to see displayed.
 - But you cannot choose the order in which lines are displayed.
- The value **ON** is the same as **F**, which displays the Filter notice only. This represents a change in behavior from prior releases where **ON** caused all three settings notices to be displayed.

```

Jobs Resources Devices Tools Filter View Options Help

STATUS 3,493S 141X 2,411W 35H 0T 54,935,116 Records Row 86 of 2587
Command ==> display_ Scroll ==> CSR
FILTER=MaskChar=*,PSelect=(JName=(/AUTO*) Type=ALL),XSelect=(),Filter=()
Cmd JobName JobID Status Process StepNum StepName JP MaxComp Records
-----
BKUPLOCL J0451546 W-OUTPUT OUTSERV 1 2 CC 3072 54

```

```

Jobs Resources Devices Tools Filter View Options Help

STATUS 3,493S 141X 2,411W 35H 0T 54,935,116 Records Row 86 of 2587
Command ==> display v_ Scroll ==> CSR
VIEW=Arrange=DEFAULT,Detail=MIN,Sort=TIME/D,TopFind=OFF
Cmd JobName JobID Status Process StepNum StepName JP MaxComp Records
-----
BKUPLOCL J0451546 W-OUTPUT OUTSERV 1 2 CC 3072 54

```

```

Jobs Resources Devices Tools Filter View Options Help

STATUS 3,493S 141X 2,411W 35H 0T 54,935,116 Records Row 86 of 2587
Command ==> display ofv_ Scroll ==> CSR
FILTER=MaskChar=*,PSelect=(JName=(/AUTO*) Type=ALL),XSelect=(),Filter=()
OPTION=CRDelay=1,Cursor=(Retain=ON,Select=OFF),Confirm=ON,DateFmt=YYYY/MM/DD,
OPTION=NumChar=',.',OClass=' ',OvrType=ON,SelCmd=S,Snap=ON,TopSel=OFF,WClass=P,
OPTION=XSelect=NOSAVE
VIEW=Arrange=DEFAULT,Detail=MIN,Sort=TIME/D,TopFind=OFF
Cmd JobName JobID Status Process StepNum StepName JP MaxComp Records
-----
BKUPLOCL J0451546 W-OUTPUT OUTSERV 1 2 CC 3072 54

```

ISPF Panel Title Line Overlay Protection

- ISPF users can request that up to 17 bytes of session-identifying information be superimposed at the start of the title line for every panel displayed by ISPF. This information includes system name, userid, panel id and/or screen name. In the past, these identifiers could obscure important information being displayed by (E)JES.
- (E)JES will now shift its title line information to the right, as needed, to make room for these identifiers. Right-side truncation of the title line data might occur.

```

Jobs Resources Devices Tools Filter View Options Help
-----
MVS60 EDJX1      T0451279 <      .      .JESMSGLG>      Line 1 of 142
Command ==>      Scroll ==> CSR
Current Find Text: IPL      Dataset 1 of 3
-----+-----1-----+-----2-----+-----3-----+-----4-----+-----5-----+-----6-----+-----7-----+----->
IAT6140 JOB ORIGIN FROM GROUP=ANYLOCAL, DSP=SR , DEVICE=STC      , 0000
13:15:24 ---- IAT6853 THE CURRENT DATE IS SATURDAY,  20 JUL 2013 ----
  
```


z/OS UNIX Extract Enhancements

- If the path name input field on the z/OS UNIX Extract Parameters panel specifies a directory, then the file system is interactively traversed. If it specifies a full path and file name, the extract occurs immediately.
- In previous releases, the path name input field was replaced with the full path and file name of a selected file. This meant that subsequent z/OS UNIX extract operations would always write to the same file unless the path name input field was manually altered by the user.
- The path name input field on the z/OS Extract Parameters panel is no longer updated during traversal of the file system except when the **L** line command is issued. Other line commands and operations do not update the path name input field.

Batch Extract Enhancements

- New KEEPOPEN option for non-directed batch extract (i.e., to the EJESEXT DD name) allows many jobs to be sent to the same output file without incurring the overhead of OPEN/CLOSE for each extract operation
- New MARK option for extract operations inserts a unique, yet human-readable, identification record to help post-processors detect the boundary between the results of two different extracts to the same target location
 - The mark record contains **____(E)JES_EXTRACT_MARK____** with **JOBNAME=jobname, JOBID=jobid** appended if job information is present. Variable-length values are used so that no embedded blanks appear in a mark record.
 - Although technically MARK works for all extract operations, it should be particularly useful with KEEPOPEN

CAI Email Plug-in Recipient Lists

- The CAI plug-in for email (EJES#RM) has been enhanced to support recipient lists for **To:** and **Cc:** addresses. **Bcc:** addresses have been added as well.
 - These new limits are considerably more flexible than the old limits of one, one, and zero respectively 😊
- Pressing **F5** with the cursor positioned to the **To:**, **Cc:**, or **Bcc:** line invokes the recipient list dialog for the selected list
- On the main dialog, only the first email address from the list is shown. An ellipsis is displayed when a list is present.

Jobs Resources Devices Tools Filter View Options Help

MVS60 S	File	Contacts	Transport	f 2713		
Command				> CSR		
Cmd Job	MVS60	E-Mail Parameters		ords		
				→		
BPX	E-Mail Information:		Transport: XMITIP	0		
BPX	From . . . edjaffe@phoenixsoftware.com			0		
EJE	To . . . edjaffe@phoenixsoftware.com ...			0		
EDJ	Cc . . . edjaffe@phoenixsoftware.com			0		
BPX	Bcc. . . edjaffe@phoenixsoftware.com			0		
TSM	Subject: . This is a test of some nice function			0		
.m MIG				More: + 130		
MIG	Cover Letter:			130		
EDJ	<u>The intent of this email is to demonstrate how the</u>			0		
EDJ	<u>CAI email plug-in has been enhanced to support reci</u>			0		
EJE	<u>ipient lists. It also happens to show how you can ke</u>			12,351		
EJE	<u>ep typing without worrying about the end of the lin</u>			12,460		
GAZ	<u>e. Format=flowed is used.</u>			10,013		
GAZ	<u>_____</u>			10,154		
BPX	<u>_____</u>			0		
INT	F1=Help	F3=Exit	F4=Lookup	F5=List	F7=Up	0
NET	F8=Down	F9=Swap	F10=Actions	F11=Clear	F12=Cancel	0
F1=Hel						ncel
MA	D				20/016	

Recipient List Dialog

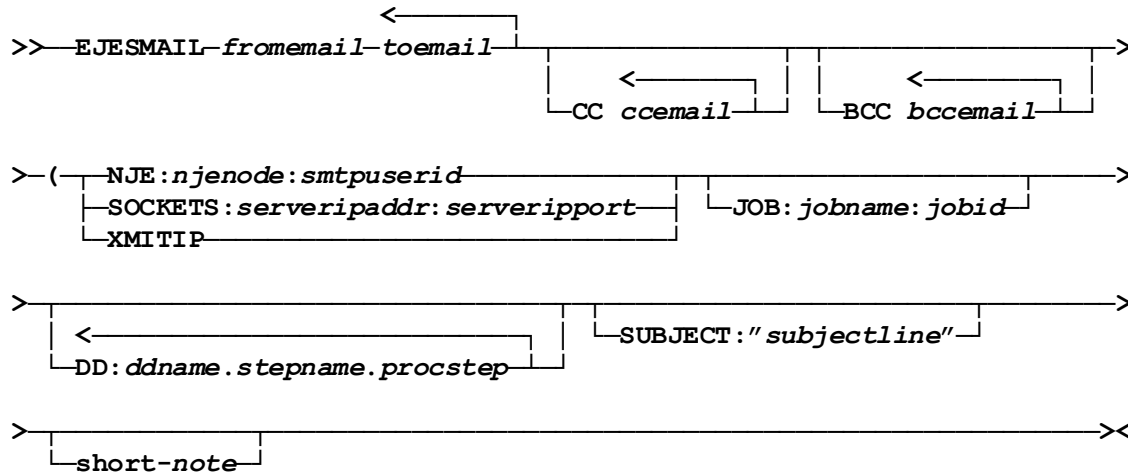
- The dialog supports **I** (insert) and **D** (delete) line commands.
- A recipient may be hand-typed or selected from the address book. **F4** invokes the address book dialog and pop-up just as it does from the main email dialog.

Cmd	Job	MVS60	E-Mail Parameters	ords
	BPX	E-Mail	<u>F</u> ile <u>C</u> ontacts	0
	BPX	From		0
	EJE	To .	MVS60 Mail Recipient Lis Row 1 to 2 of 2	0
	EDJ	Cc .	<u>T</u> O: (TO:, CC:, or BCC:)	0
	BPX	Bcc.	Command ==>	0
	TSM	Subj		0
.m	MIG		<u>edjaffe@phoenixsoftware.com</u>	130
	MIG	Cover	<u>daverourke@phoenixsoftware.com</u>	130
	EDJ	The	***** Bottom of data *****	0
	EDJ	CAI		0

Batch Utility to Email Jobs and Data Sets

- EJESMAIL is a new REXX exec written to help customers send textual job output via email. It is not part of the Customer Application Infrastructure (CAI), but it does rely on some of the CAI utilities.
- EJESMAIL can be invoked as a TSO/E foreground command, from the z/OS UNIX OMVS command prompt, as a batch job step, or under System REXX.
- EJESMAIL supports the same three mail transport agents supported by the CAI email plug-in and utilities: NJE, direct sockets, and XMITIP (from Lionel Dyck).
- EJESMAIL can be a convenient way for a batch job to email some or all of its own output.

EJESMAIL Invocation Syntax



- Operands must appear in the order shown
- *njenode* and *smtpuserid* default to the current node and SMTP respectively
- *jobname* and *jobid* default to the current running job
- *stepname* is used only when *ddname* is not unique; *procstep* is used only when *ddname.stepname* is not unique.
- *short-note* is flowed as a simple paragraph—ideal for cell phone email
- The NOTEDD DD statement is used to provide the text of a more formal cover letter

EJESMAIL Usage Examples

```
//*****/
//* Email Output of our Job to JOEUSER */
//*****/
//EMAILJOB EXEC PGM=IKJEFT01
//SYSEXEC DD DSN=EJES.SEJEEEXEC,DISP=SHR
//SYSTSPRT DD SYSOUT=*
//SYSTSIN DD *
EJESMAIL mysystem@mycompany.com joeuser@mycompany.com +
CC: edjaffe@phoenixsoftware.com paulscott@phoenixsoftware.com +
(NJE Subject:"Output from &JNA" +
Please find attached the output from job &JNA. Thanks!
/*
```

```
//*****/
//* Email LISTVTOC Output to JOEUSER */
//*****/
//EMAILRPT EXEC PGM=IKJEFT01
//SYSEXEC DD DSN=EJES.SEJEEEXEC,DISP=SHR
//SYSTSPRT DD SYSOUT=*
//SYSTSIN DD *
EJESMAIL mysystem@mycompany.com joeuser@mycompany.com +
(XMITIP DD:SYSPRINT Subject:"Result of LISTVTOC command"
//NOTEDD DD *
Dear Joe,
```

The LISTVTOC output you requested is attached. We hope it provides you with the enlightenment you seek.

Thanks,

The Management
/*

Support CMF for ACPLEX=SYS

- Previously, we documented that ACPLEX=SYS worked for IBM's RMF but not for BMC's CMF.
- Our (erroneous) assumption was that the required support was missing from CMF. In fact, the problem was that CMF abended internally with a too-small initial work area size.
- APAR BCM0849 from BMC as well as a *somewhat* larger initial work area size from (E)JES allowed CMF to operate properly. 😊
 - PTFs available for CMF 5.7, 5.8, and 5.9 are BQM0852, BQM0853, and BQM0854, respectively.
- In addition, msgEJES412 was enhanced to display the service reason code. This should help diagnose further RMF/CMF issues without requiring SLIP dumps or traces.

API Updates

- Tabular row attributes (active emphasis, metafilters colorization, etc.)
- Line commands array
 - Command value, text description, intended function
- New environment variables:
 - JES member name, job name, jobid, userid
- **Note:** As requirements are recognized, they are implemented throughout the entire API stack:
 - EJESAPI and EJESAPI4 (HLASM, C/C++, etc.)
 - EJESREXX (REXX)
 - EJESJAVA (Java)
 - (E)JES Web has become a major API exploiter.

Self-describing SMF Record Format

- Since inception, the (E)JES SMF record has been a fixed-format structure.
- You can now optionally use a new, self-describing format that uses “triplets” to contain offsets, lengths and counts of the various sub-segments that comprise the record.
- The advantage of the new format is that existing segments can be extended and new segments can be added non-disruptively.
- Your choice is specified via the SMFREC installation options parameter. The default is the original ‘Format 0’ record. You specify ‘Format 1’ to get the self-describing records.

Date Format Consistency in SMF Record

- There are two date fields in the (E)JES SMF record: ESMFDATE and ESMFDBGN. The first is part of the SMF record header; its format follows the standard set forth by SMF: 0ccyydddF. The second has, until now, always been in (E)JES internal date format: 0yyyyydd.
- This inconsistency created a challenge for customers that tried to post-process (E)JES SMF records.
- Beginning with this release, both date fields will use the standard SMF date format.
- Note: MXG 30.09 and higher automatically recognizes and handles both old and new date formats in the (E)JES SMF record.

Miscellaneous Updates

- Support for z/OS 2.1 JES3 dynamic spool removal
 - This is a major feature, but there's not much to show, so it shows up as "miscellaneous." Suffice it to say that (E)JES won't abend when a SPOOL volume is removed in z/OS 2.1.
- Function key to clear input on pop-up windows (F11)
- New CRETAIN=NEVER setting
 - Forces cursor back to the command line in all cases, even when returning from a sub-function. (CRETAIN=NO keeps the cursor on the row when returning from a sub-function.)
- SRESET command renamed to PRESET. SRESET will continue to work for the foreseeable future.

New Security Extensions User Exit

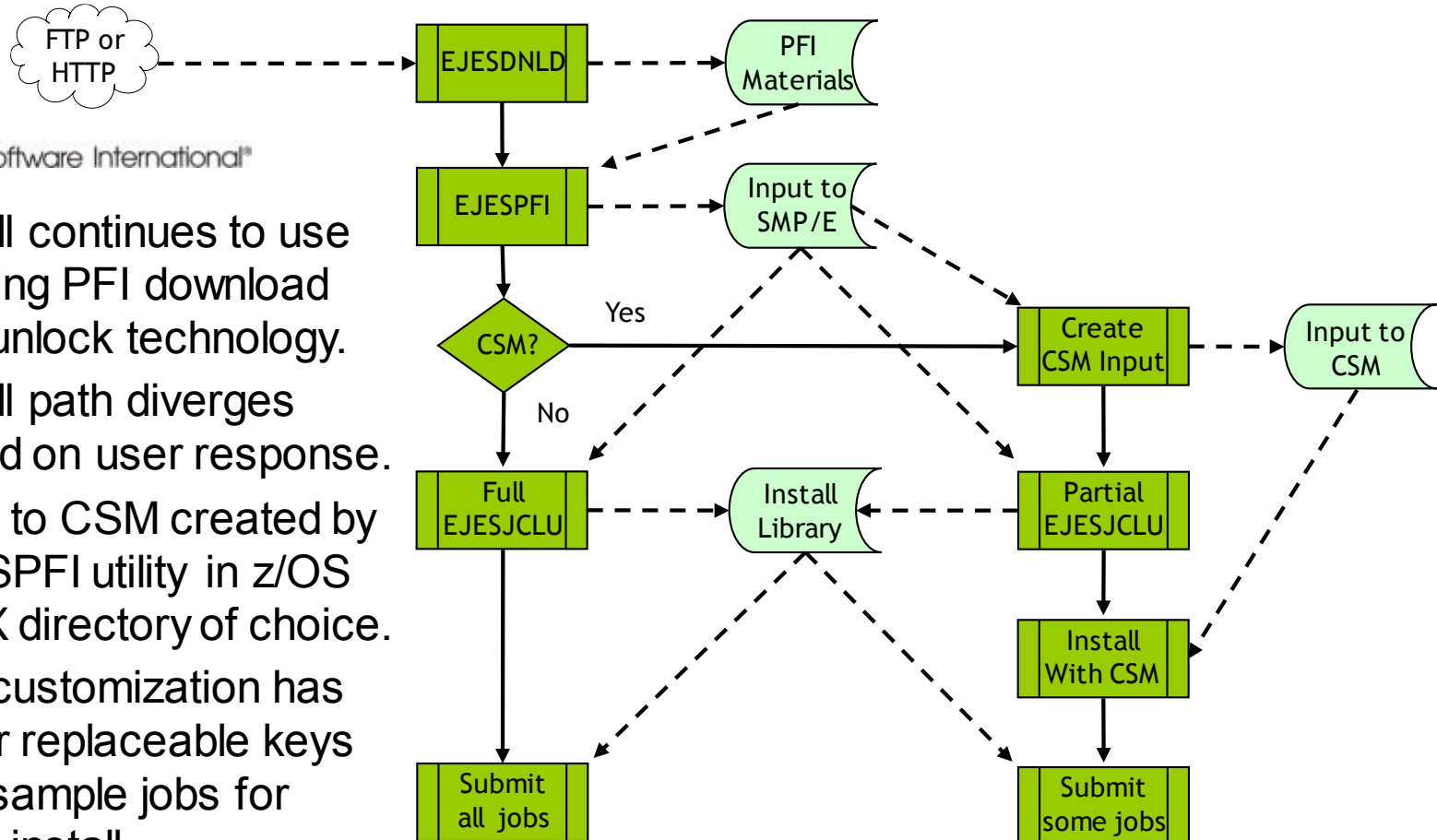
- New user exit EJESUX14 is designed to provide various security extensions. Currently only one function is provided: Data Set Browse Authority.
- The exit gets control just before security checking is performed when browsing (or otherwise displaying the contents of) a SPOOL data set.
- Return codes can choose to always accept, always reject, or continue with normal security processing.

Installation via Chorus Software Manager from CA Technologies



PHOENIX Software International®

- Install continues to use existing PFI download and unlock technology.
- Install path diverges based on user response.
- Input to CSM created by EJESPF1 utility in z/OS UNIX directory of choice.
- JCL customization has fewer replaceable keys and sample jobs for CSM install.



MVS60 ----- PFI Installation Utility ----- V5R3

Command ==> _

Transform

Transform PFI Installation
Materials into SMP/E Input

SMP/E Data Set Parameters:

Data set prefix ==> EDJX1.SMPE530

Volume serial ==> NONE (Volume serial or NONE)

Local Work Files Parameters:

Your TSO/E Prefix ==> EDJX1

Volume serial ==> NONE (Volume serial or NONE)

CA Chorus Software Manager Choice:

Install via CSM? ==> YES (YES or NO)

Press HELP for help with this utility.

F1=Help F3=Exit F12=Cancel

MA D

02/015

----- Install JCL Customization Utility ----- V5R3

Command ==> _

More: - +

Customization Library Parameters:

Data Set Name ==> EDJX1.SMPE530.INSTALL

Target Library Parameters:

Dsname Prefix ==> EJES

z/OS UNIX Path ==> /usr/lpp/ejes

Eleven
prompts
disappear for
CSM install

Maintenance Data Set Parameters:

Dsname Prefix ==> EJES

Documentatation Parameters:

Adobe Document Path ==> /local/PDFdocs

HTML Document Path ==> /local/HTMLdocs

Eclipse Plugins Path ==> /local/infocenter/eclipse/plugins

System Data Set Parameters:

JES Library Prefix ==> SYS1

TCPIP Library Prefix ==> TCPIP

CICS Profile Data Set Parameters:

F1=Help F3=Exit F12=Cancel

MA D

02/015

PTF and USERMOD Transformation

- For traditional install, PTFs and USERMODs are delivered as batch JCL.
- When using CSM install, these members are transformed into pure SMP/E input and renamed.
 - PTFs renamed from EJES\$xxx to PTFCxxx
 - USERMODs renamed from EJES\$xxx to UMODxxx

```
//EJES$LIC JOB 1, 'LICENSING',
... (JECL and comments)
//PROCLIB JCILIB ORDER=EDJXADM.SMPE530.INSTALL
// EXEC PROC=EJES$SMP
//SMPCNTL DD *
  SET BDY(GLOBAL) OPTIONS(EJESGOPT) .
  RECEIVE SYSMODS LIST .
  SET BDY(EJESTZN) OPTIONS(EJESGOPT) .
  APPLY S(EJESLIC) REDO C(ALL) .
//SMPPTFIN DD *
++USERMOD(EJESLIC) REWORK(2013069) .
++VER(Z038) FMID(QEJ5300) .
++SRC(EJESLIC) .
* REL=V5R3 GRACE=2013-01-01
*---+-----1---+-----2---+-----3---+-----4---+-----5
EJESGLIC DATA=001307508CD994D2F181590816EF82FF
EJESGLIC DATA=C4C4E0
EJESGLIC CKSUM=0000021813
END ,
//
```

```
++USERMOD(EJESLIC) REWORK(2013069) .
++VER(Z038) FMID(QEJ5300) .
++SRC(EJESLIC) .
* REL=V5R3 GRACE=2013-01-01
*---+-----1---+-----2---+-----3---+-----4---+-----5
EJESGLIC DATA=001307508CD994D2F181590816EF82FF
EJESGLIC DATA=C4C4E0
EJESGLIC CKSUM=0000021813
END ,
```

```
Portable File Installation Detected ...
Allocating libraries ...
Copying members ...
Customizing members ...
```

Some
members are
not used

```
EJES$ACC: not used for CSM install
EJES$APP: not used for CSM install
EJES$CAP: copied and customized
EJES$CPA: copied and customized
EJES$DAL: not used for CSM install
EJES$DDF: not used for CSM install
EJES$DOC: copied and customized
EJES$DRL: copied
EJES$ENA: copied
EJES$ENV: copied
EJES$ENV: renamed
EJES$EN2: copied
EJES$EN2: renamed
EJES$EN3: copied
EJES$EN3: renamed
EJES$GAL: copied
EJES$GAS: copied
EJES$ISF: copied
```

```
EJES$ISF: renamed to PTFCISF for CSM install
EJES$JNL: copied and customized
EJES$LDL: copied and customized
EJES$LIC: copied and customized
EJES$LIC: renamed to UMODLIC for CSM install
EJES$LSR: copied and customized
EJES$LSV: copied and customized
EJES$OPT: copied and customized
EJES$OPT: renamed to UMODOPT for CSM install
EJES$PAC: not used for CSM install
EJES$PAP: not used for CSM install
EJES$PDL: copied and customized
```

Some are
transformed
and renamed

MVS60 ----- PFI Installation Utility ----- V5R3

Command ==> _

CSM

CA Chorus Software Manager

To use CA Chorus Software Manager to perform the SMP/E install, supply the following parameters and press the ENTER key. The Java and SMP/E class paths are needed only if ICSF is not available.

CA Chorus Software Manager Install Parameters:

```
Output path ==> /u/edjx1
Work path    ==> /tmp/edjx1/EJES530
Java path    ==> /usr/lpp/java/J6.0_64/
SMP/E path   ==> /usr/lpp/smp/classes
```

Press ENTER to create input to CA Chorus Software Manager.
Press the END key to continue without creating this file.

F1=Help F3=Exit F12=Cancel

MA D

02/015

24/006

```

-----</FILEDEF>
-----<FILEDEF name="EDJX1.SMPE530.$QPX1L10.F2"
      archid="QPX1L10.F2" type="SMPRELF"
      description="Phoenix TP Monitor load modules">
-----</FILEDEF>
-----</GIMZIP>
GIM47500I  ARCHIVE PROCESSING IS COMPLETE FOR EDJX1.EJESPF1.CSM.SMPMCS.
GIM47500I  ARCHIVE PROCESSING IS COMPLETE FOR EDJX1.SMPE530.$QEJ5300.F1.
GIM47500I  ARCHIVE PROCESSING IS COMPLETE FOR EDJX1.SMPE530.$QEJ5300.F2.
GIM47500I  ARCHIVE PROCESSING IS COMPLETE FOR EDJX1.SMPE530.$ZEJ5300.F1.
GIM47500I  ARCHIVE PROCESSING IS COMPLETE FOR EDJX1.SMPE530.$ZEJ5300.F2.
GIM47500I  ARCHIVE PROCESSING IS COMPLETE FOR EDJX1.SMPE530.$ZEJ5300.F1.
GIM47500I  ARCHIVE
GIM47500I  ARCHIVE
GIM47500I  ARCHIVE
GIM47500I  ARCHIVE
GIM47500I  ARCHIVE
PAGE 0002

```

```

GIM20501I  GIMZIP I
Obtaining CSM metadata
PSI.DATASET.XML
***

```

```

PSI.DEPLOYMENT.XML
PSI.EULA.TXT
PSI.PACKAGE.XML
PSI.README.TXT
PSI.SMPEINSTALL.XML
PSI.SMPESETUP.XML
Creating install package...
EJES530/
EJES530/PSI.DATASET.XML
EJES530/SMPPTFIN/
EJES530/SMPPTFIN/S0001.EDJX1.EJESPF1.CSM.SMPMCS.pax.Z
EJES530/SMPRELF/

```

MVS60 ----- PFI Installation Utility ----- V5R3

Command ==> _

Congratulations!

You have completed all of the
early installation steps!

You should now be ready to use CA Chorus Software Manager to install (E)JES. Please continue with Chapter 7. Install (E)JES Using CA Chorus Software Manager in (E)JES V5R3.0 Installation to perform the remainder of the product installation.

A copy of your customization library in NETDATA format has been included with the CSM package, making it available for post-installation tasks if you install on another system. Use member EJES\$CSX to retrieve this data.

F1=Help F3=Exit F12=Cancel

MA D

02/015

24/006

CSM Checklist

- Add (E)JES Product to CSM Software Catalog
- Add (E)JES Install Package (created by EJESPIFI)
- Install the (E)JES Product
 - Three install choices:
 - Complete install – all FMIDs
 - Standard install – all FMIDs except Uppercase English
 - Custom install – allows bypass of (E)JES Java and Web components as well as Uppercase English feature
 - You will be prompted for data set HLQs, volumes, etc.
 - If there are any seemingly “redundant” prompts between CSM and EJESJCLU, be sure to specify the same value.
- Install customization USERMODs like normal maintenance

Firefox CA Chorus™ Software Manager - Add Pr...

CA Chorus™ Software Manager edjxadm

Software Status Products SMP/E Environments Deployments

Search Vendor

Search Products

Search Products

Actions

Update Show List Add Product Install Base Add CA Update Show Hi

Filter

Add Product

Specify the name, release, and gen level of the product, and click OK. The product will be added to the product list.

Vendor*: PSI

Product*: (E)JES

Release*: 5.3

Gen Level: 0

OK Cancel Help

Copyright © 2012 CA. All rights reserved. Feedback | About

Firefox CA Chorus™ Software Manager - swcatl...

CA Chorus™ Software Manager edjxadm

Add External Package

Enter the path to the package for 0.

Type of Input Source

☒ UNIX File ☐ FTP File

UNIX Path*: /u/edjxadm/EJES530.pax.Z

OK Cancel Help

Products

PSI

(E)JES

5.3

0

Copyright © 2012 CA. All rights reserved. Feedback | About

Firefox CA Chorus™ Software Manager - Main ...

CA Chorus™ Software Manager edjxadm

Products Deployments Configurations System Registry Tasks Settings

0

Products > PSI > (E)JES > 5.3 > 0

Base Install Packages Add External Package

Show: All

Select and: Download Show All

Select	Name	Last Modified	Type	Download Status	Size	Release/Gen Level	Actions
<input type="checkbox"/>	EJES530.pax.Z	Mar 11, 2013	Base Install	Yes	30 MB		Install Delete

Selected 0 of 1.

Copyright © 2012 CA. All rights reserved. Feedback | About

Search In: Products Search

The product was updated in the window.

Add External Maintenance

Enter the path to the maintenance for (E)JES/5.3 - Use the asterisk (*) for PDS and PDSE members.

Type of Input Source

☒ Data Set ☐ UNIX File ☐ FTP File

Data Set Name*: EDJXADM.SMPE530.INSTALL(UMODLIC)

OK Cancel Help

Available Products

Products

PSI

(E)JES

5.3

Select and: Update Working Set

☒ Select

Selected 1 of 1.

Copyright © 2012 CA. All rights reserved. Feedback | About

Performance Study

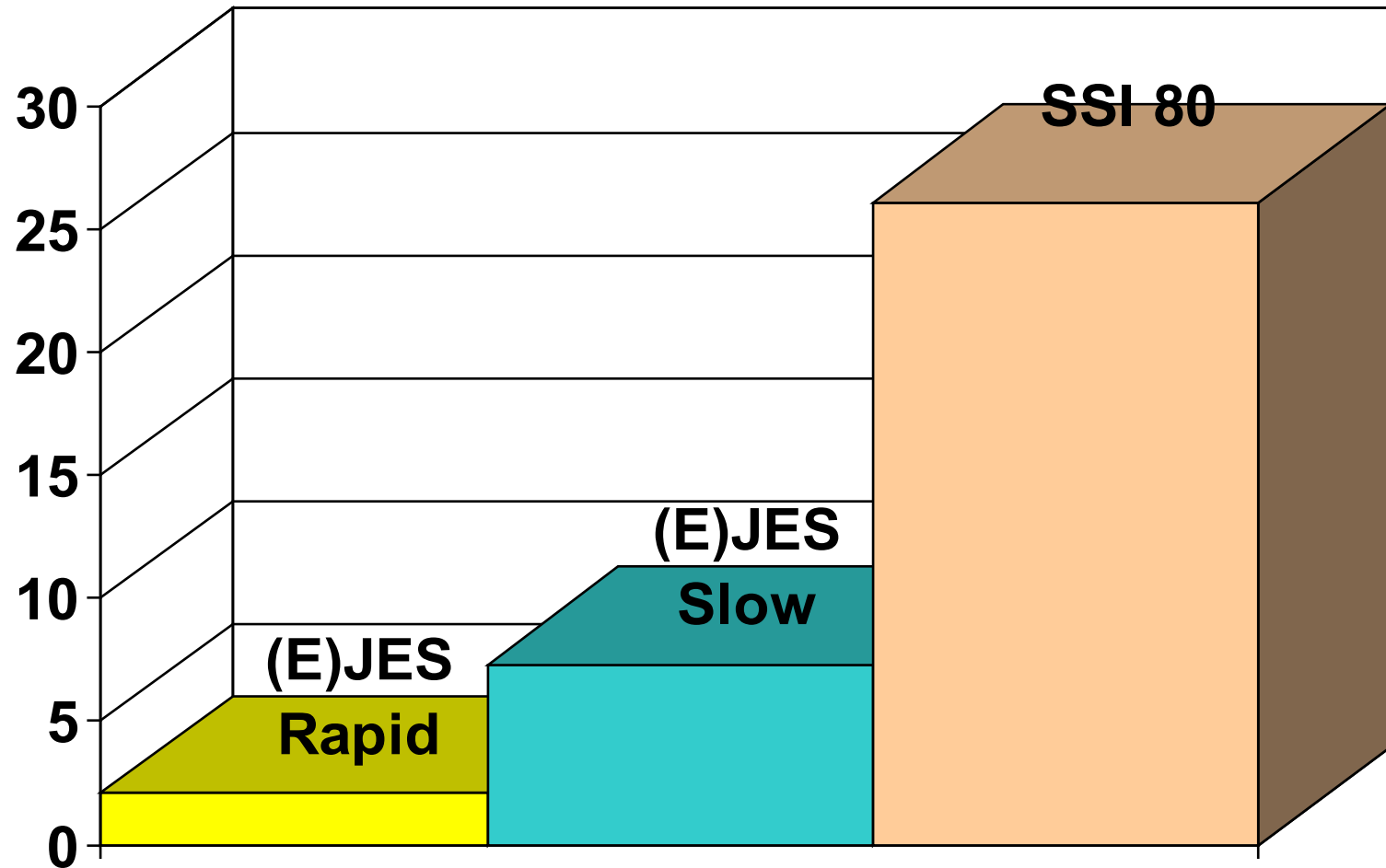
Importance of a Performance Value-Add

- One key goal of any good ISV software product is to try to provide a value-add in the area of performance. This has been one of our primary areas of focus since 1978.
- Back then, there were no specialty engines. Writing well-performing code was the only way to save run-time “hard dollars” for customers.
 - There was/is also the issue of increased user productivity through a rich feature set. Such gains, while substantial, are more difficult to quantify with benchmarks.
- CPU savings is our most important objective. VWLC-style pricing makes this even more important today, especially for products that might run during the afternoon peak.
- I/O performance savings is a close second.

JES2 CPU Performance Quantified

- Competing products tend to rely on the most resource-intensive interface available: the JES-provided SSI 80.
- Our internal benchmark testing against the most readily-available JES2 SSI 80 exploiter showed it needed 3.5x as much CPU as (E)JES to refresh the JES2 HOLD display pressing <Enter> slowly, once every five seconds.
- Pressing <Enter> as rapidly as possible yielded a 12.5x CPU requirement!
- The benchmark was run on an idle 2098-D04 running z/OS 1.13.

JES2 CPU Performance Quantified: Between 3.5x and 12.5x

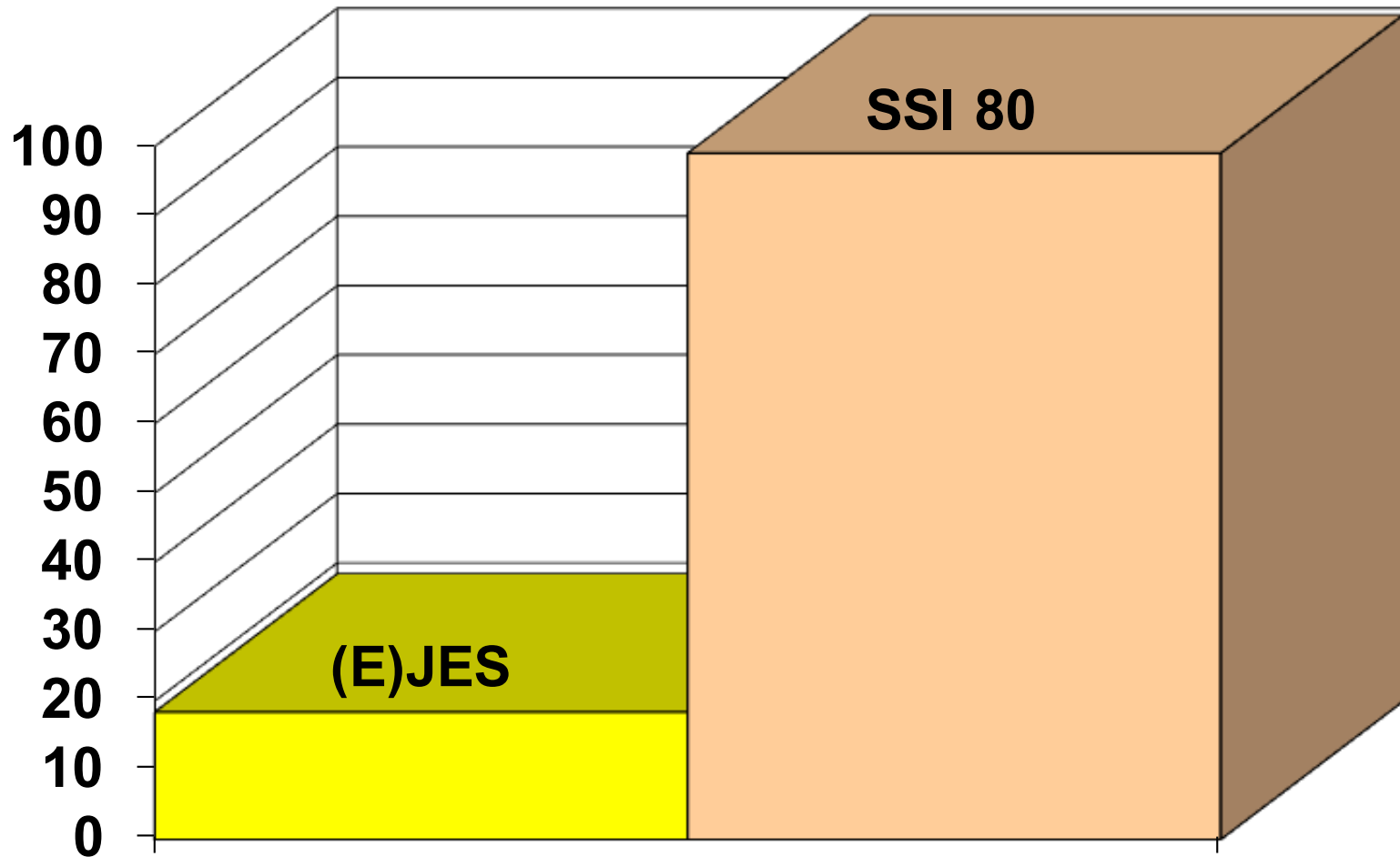


JES2 Held Output Display

JES3 CPU Performance Quantified

- JES3 benchmarking is slightly more difficult than JES2, because a *significant* amount of SSI 80 processing runs as high-priority work in the JES3 global address space.
- All JES3 activity must be quiesced (so that JES3 is waiting) and its CPU utilization carefully measured.
- Our internal benchmark testing against the most readily-available JES3 SSI 80 exploiter showed it needed 5.4x as much CPU as (E)JES to refresh the JES3 HOLD display.
- This includes both CPU consumed by the TSO user and CPU consumed by the high-priority JES3 address space.
- Rapidity of refreshes makes no difference for JES3.
- Like the previous test, the benchmark was run on an idle 2098-D04 running z/OS 1.13.

JES3 CPU Performance Quantified: 5.4x



JES3 Held Output Display

Performance Differences in Perspective

- The benchmark savings occur using apples-to-apples measurements with TCB-mode only, GCP execution.
- Customers with zIIP processors will observe an entirely different situation.
- Not only does (E)JES use far less CPU than any SSI 80 exploiter, but nearly all of it is eligible for redirection to zIIP.
- In the case of SSI 80, none of the CPU resources are eligible for zIIP redirection—even for customers with zIIP processors available.

JobName	CPU-Time	ACPU-Time	zIIP-Time	GCP-Time	zICP-Time	
-----/-----	-----	-----	-----	-----	-----	
JOEUSER	00:06.15	00:12.20	00:05.94	00:05.94	00:00.00	BEFORE
JOEUSER	00:07.16	00:29.12	00:21.71	00:06.91	00:00.00	AFTER
JOEUSER	00:01.01	00:16.92	00:15.77	00:00.97	00:00.00	DIFFERENCE

94%
Offload

Questions?

