



“Deploying CICS with Right Clicks” CICS Deployment Assistant

Eric Higgins
IBM

August 14, 2013
143444



Please Note

IBM's statements regarding its plans, directions, and intent are subject to change or withdrawal without notice at IBM's sole discretion.

Information regarding potential future products is intended to outline our general product direction and it should not be relied on in making a purchasing decision.

The information mentioned regarding potential future products is not a commitment, promise, or legal obligation to deliver any material, code or functionality. Information about potential future products may not be incorporated into any contract. The development, release, and timing of any future features or functionality described for our products remains at our sole discretion.

Performance is based on measurements and projections using standard IBM benchmarks in a controlled environment. The actual throughput or performance that any user will experience will vary depending upon many factors, including considerations such as the amount of multiprogramming in the user's job stream, the I/O configuration, the storage configuration, and the workload processed. Therefore, no assurance can be given that an individual user will achieve results similar to those stated here.

CICS Topology?

What is running on your System z ?

Who knows how to obtain this information?

- **Skills**
 - ▶ Who knows what the current system topology looks like?
 - Who has the skills to discover the current topology?
 - Where is the knowledge?
- **Time to value and Return on your investment**
 - ▶ Discovery
- **Efficiently obtaining topology information**
 - ▶ Reporting
- **Where are your investments?**
 - ▶ What address spaces are executing in your Sysplex?
 - What are all these address spaces?
 - What could be affecting your MLC?
 - How is the system upgrade going?
 - ▶ Which MVS images are my CICS assets executing within?
 - ▶ What is connected to what?





CICS Deployment Assistant for z/OS



What is it?

- A tool to help provision the CICS Environment, providing discovery and visualization features that provide insight into the overall CICS Ecosystem.

What's its value?

- Topology Visualization
- Simplify tasks, save time, and reduce risk
- Automate many complex provisioning activities
- Significantly reduce the time required to validate CICS topology

How does it enhance the management of CICS?

- Discovery and Modelling of CICS systems and applications
- Deployment perspective integrates with CICS Explorer Advanced Topology Visualization
- Automated creation, deployment, customization, and control of CICS regions
- Edit files, submit JCL, view output
- Simplify tasks, save time, and reduce risk

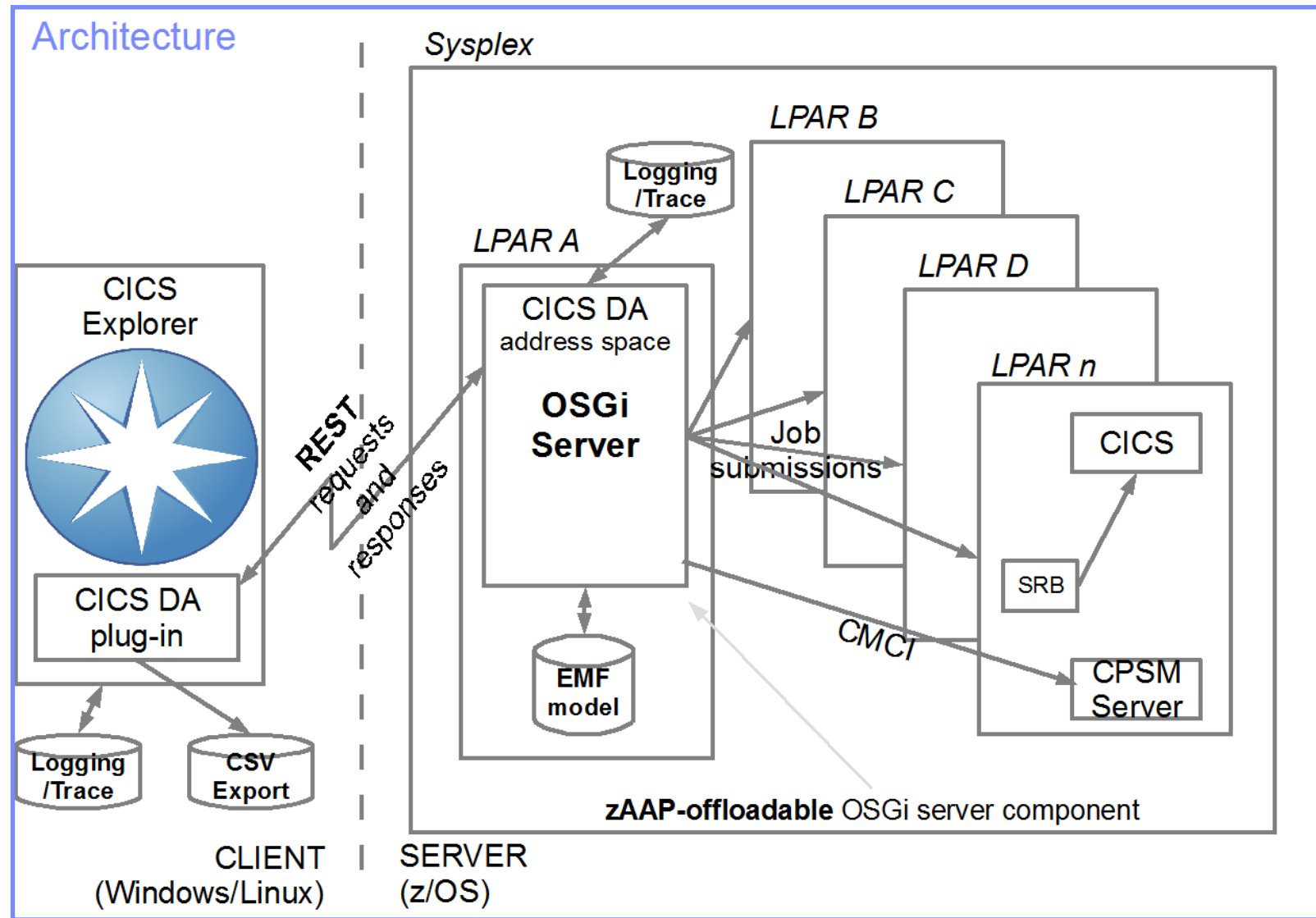
Why is this tool important?

- Improved speed to market
- Reduced chance of failure
- Controlled, governed deployment
- Optimize hardware resources
- Simplify and automate complex tasks
- Plan for mergers and acquisitions
- Help with understanding applications
- Reduce ongoing life cycle costs for managing new CICS systems

CICS PROVISIONING



CICS DA V5.1 Architecture



CICS DA V5.1 – Features and Functions



■ **Discovery**

- ▶ **Discover** your Sysplex, CICS assets and other address spaces
- ▶ **Visualise** graphically the assets and interconnections between them
- ▶ Discovery data exporting for **reporting**

- **Delete entities** from the model
- Web-style **tagging** of discovered entities

■ **Deployment**

- ▶ Create a **new management facility; CMAS & CICSplex SM WUI server**
- ▶ Create **new CICSplex**
- ▶ Create **new System Group**
- ▶ **CICSplex SM manage** an unmanaged region by adding it to a CICSplex
- ▶ **Clone** CICS regions

CICS DA V5.1 – What is Discovered



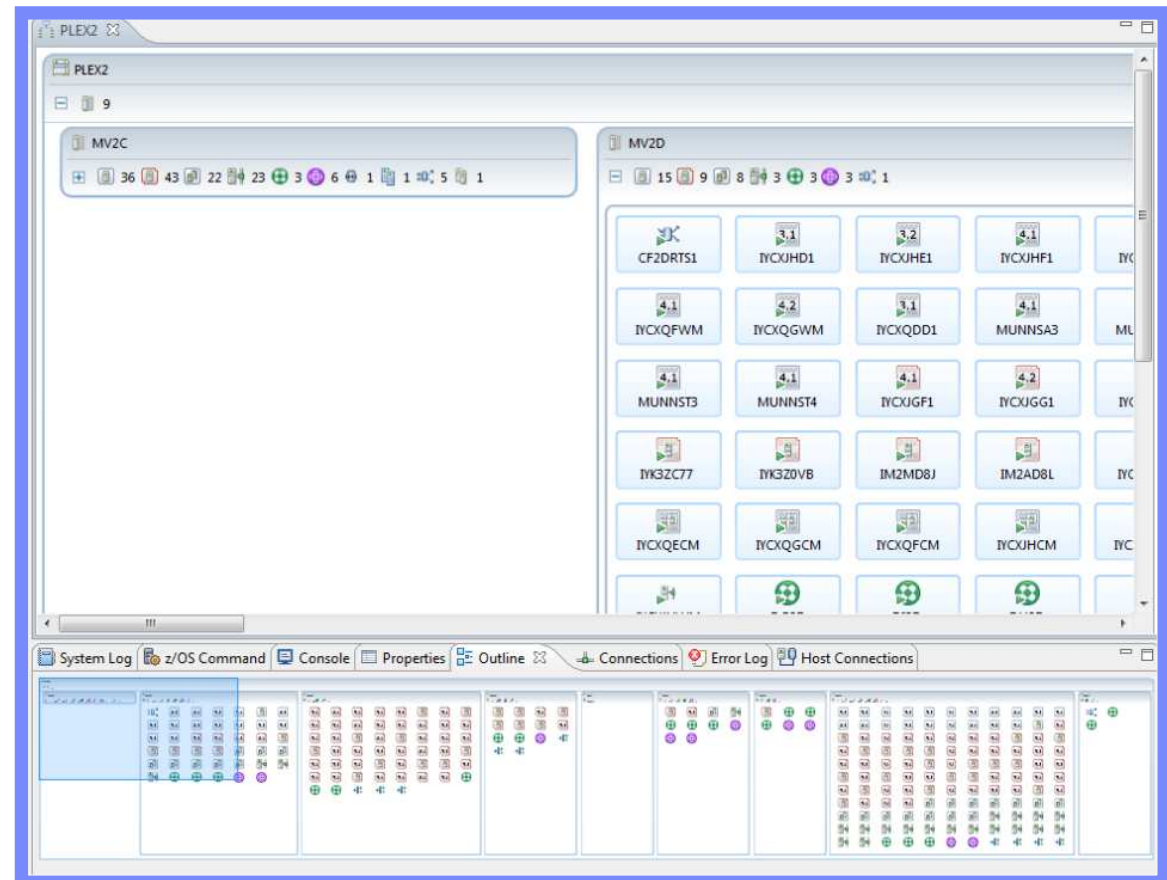
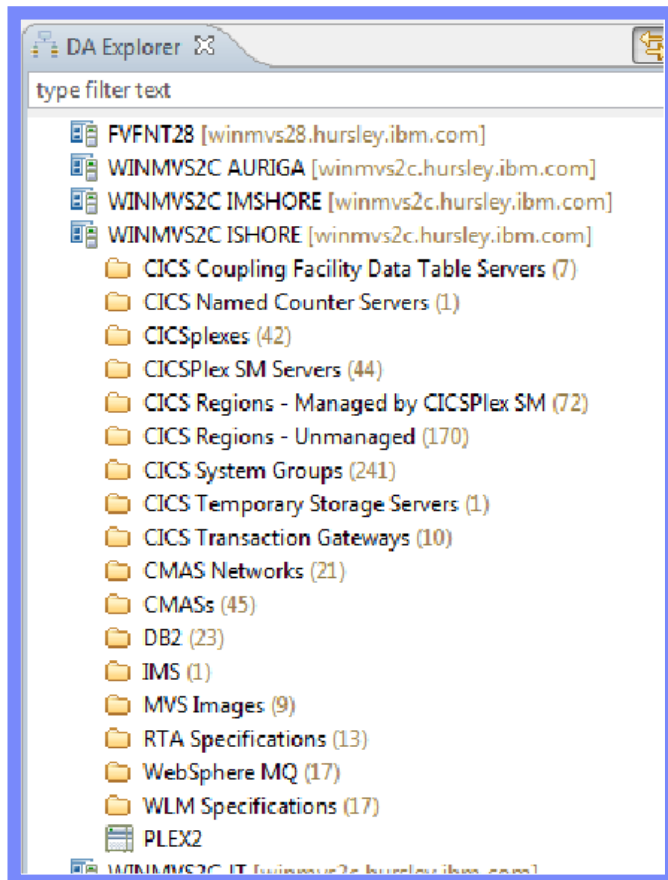
- Address spaces discovered in the Sysplex and discovered LPARs:
 - ▶ CICSplex SM Servers
 - ▶ CMASs
 - ▶ Managed CICS regions
 - ▶ Unmanaged CICS regions
 - ▶ CICS Transaction Gateways
 - ▶ Coupling Facility Data Tables
 - ▶ Named Counter Servers
 - ▶ MQ
 - ▶ DB2
 - ▶ IMS
- Discovered data includes:
 - ▶ Job name
 - ▶ Job Id
 - ▶ CICS version
 - ▶ CICS connections
 - ▶ CPSM attributes
 - ▶ Users can augment the data model:
 - ▶ Free-form (CSV) tags
 - ▶ Start and stop policies

CICS DA V5.1 – Visualizing discovered data



Graphical Visualisation: Sysplex view & Overview

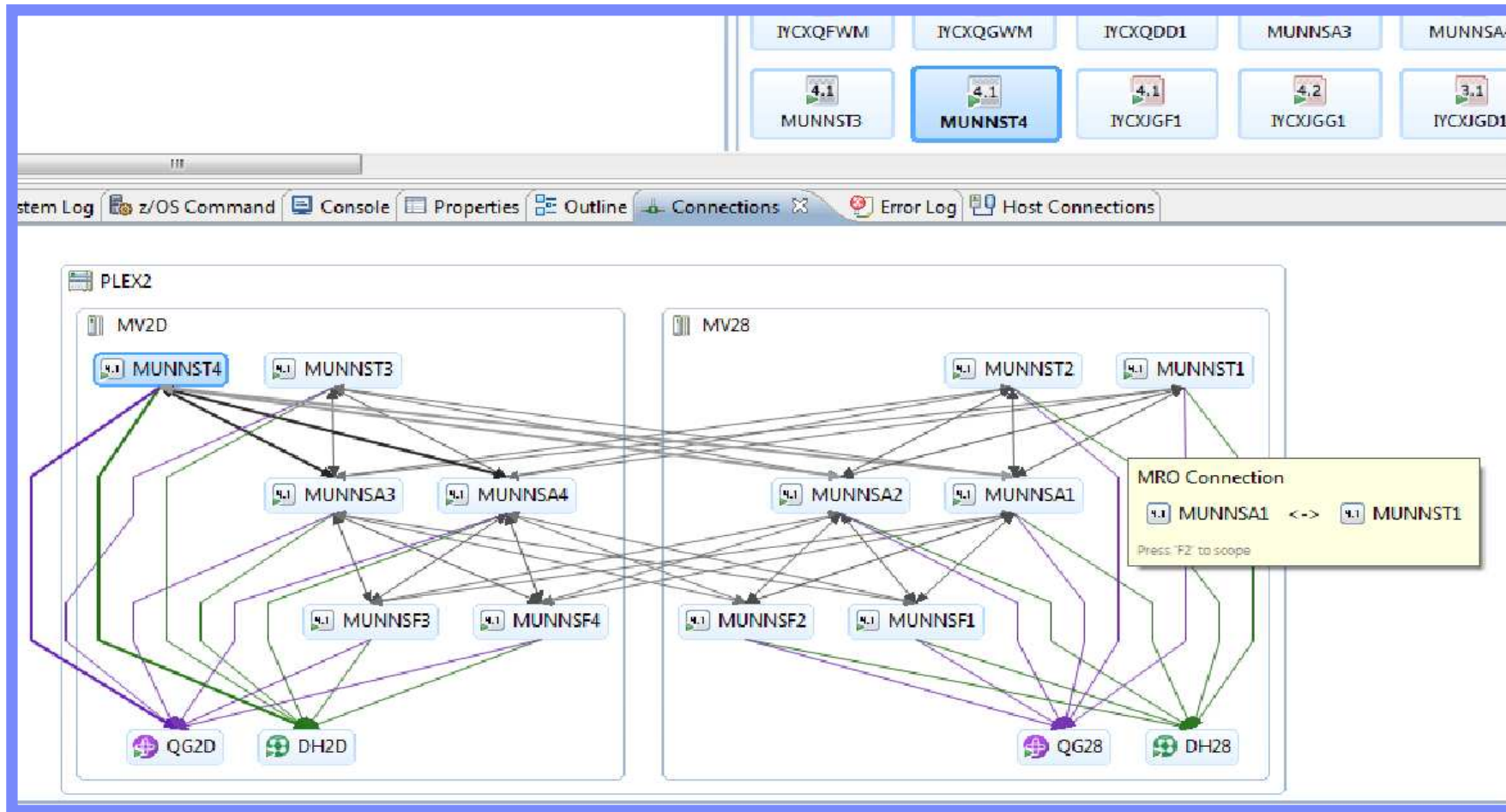
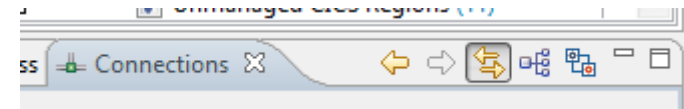
Tree View



CICS DA V5.1 – Visualizing discovered data



Scoped connections view – in a physical layout

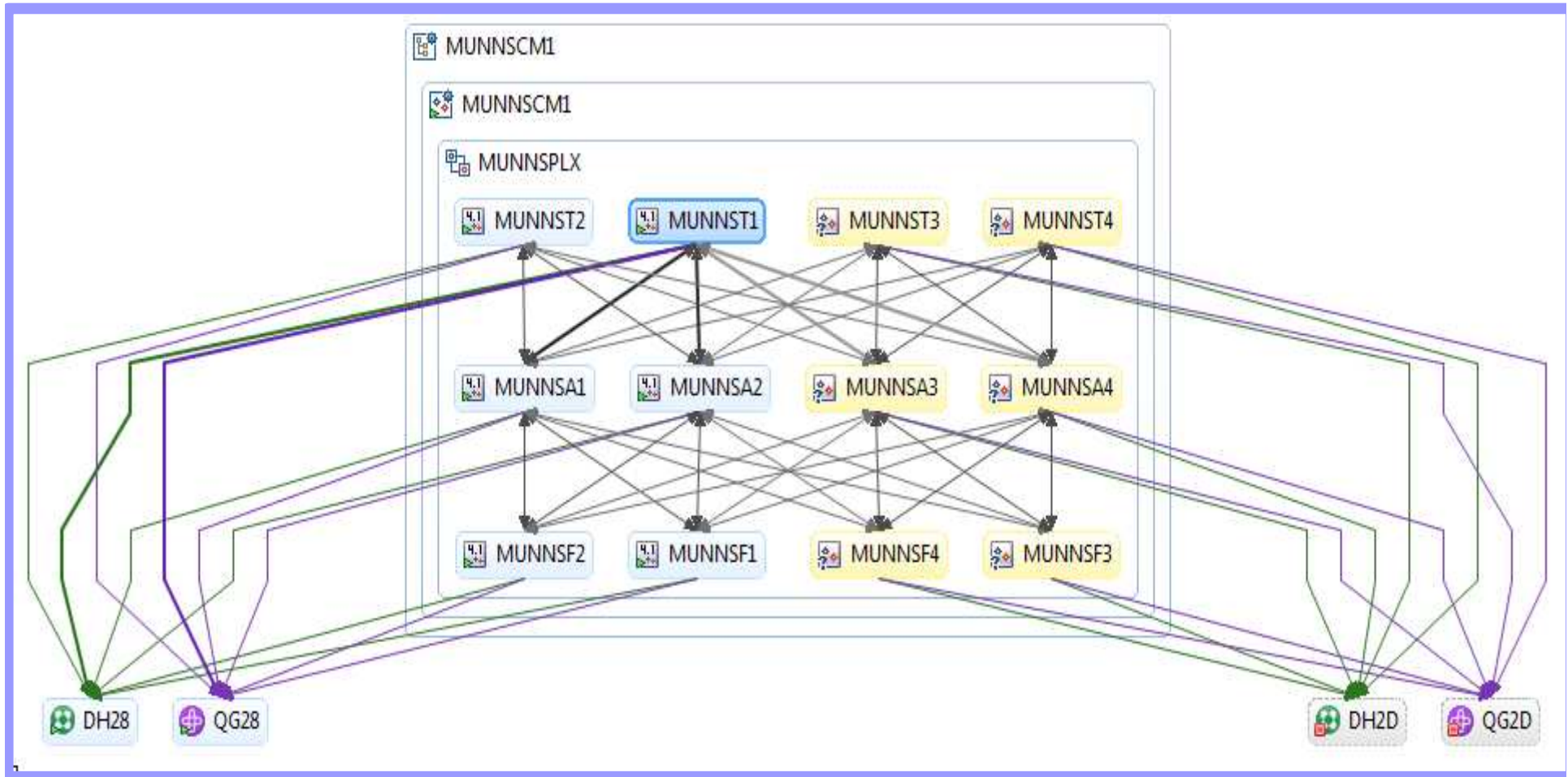


Complete your sessions evaluation online at SHARE.org/BostonEval



CICS DA V5.1 – Visualizing discovered data

Scoped connections view – in a logical layout



Complete your sessions evaluation online at SHARE.org/BostonEval



CICS DA V5.1 – Visualizing discovered data



Graphical Visualisation – zoom levels from 50% to 400%

The screenshot shows the PLEX2 application interface. The main window displays a grid of CICS components under the MV2D plex. A callout box highlights the 'MUNNSCM1' component with the following details:

- MUNNSCM1**
- 1 Job: MUNNSCM1
- 1 CPSM Ver: 4.1 (0410)
- 1 Managed CICS Plexes: MUNNSPLX
- 7 Managed MASs: MUNNSA1, MUNNSA2... +5

CICS DA V5.1 – Editors and Tagging



- Editors
 - ▶ Provides base level of information about discovered entities
 - Start/Stop policies - JCL/Command
 - Tags - Web-style
 - Job name
 - Job ID
 - Program
 - z/OS System (aka MVS Image / LPAR)
 - Last known status – CICS DA is not a monitoring tool
 - Connectivity

- Tagging
 - ▶ Manual Web2.0 style tagging on discovered entities
 - Aids reporting and visualization filtering

CICS DA V5.1 – Editors



For Example - “Managed CICS Region” Editor

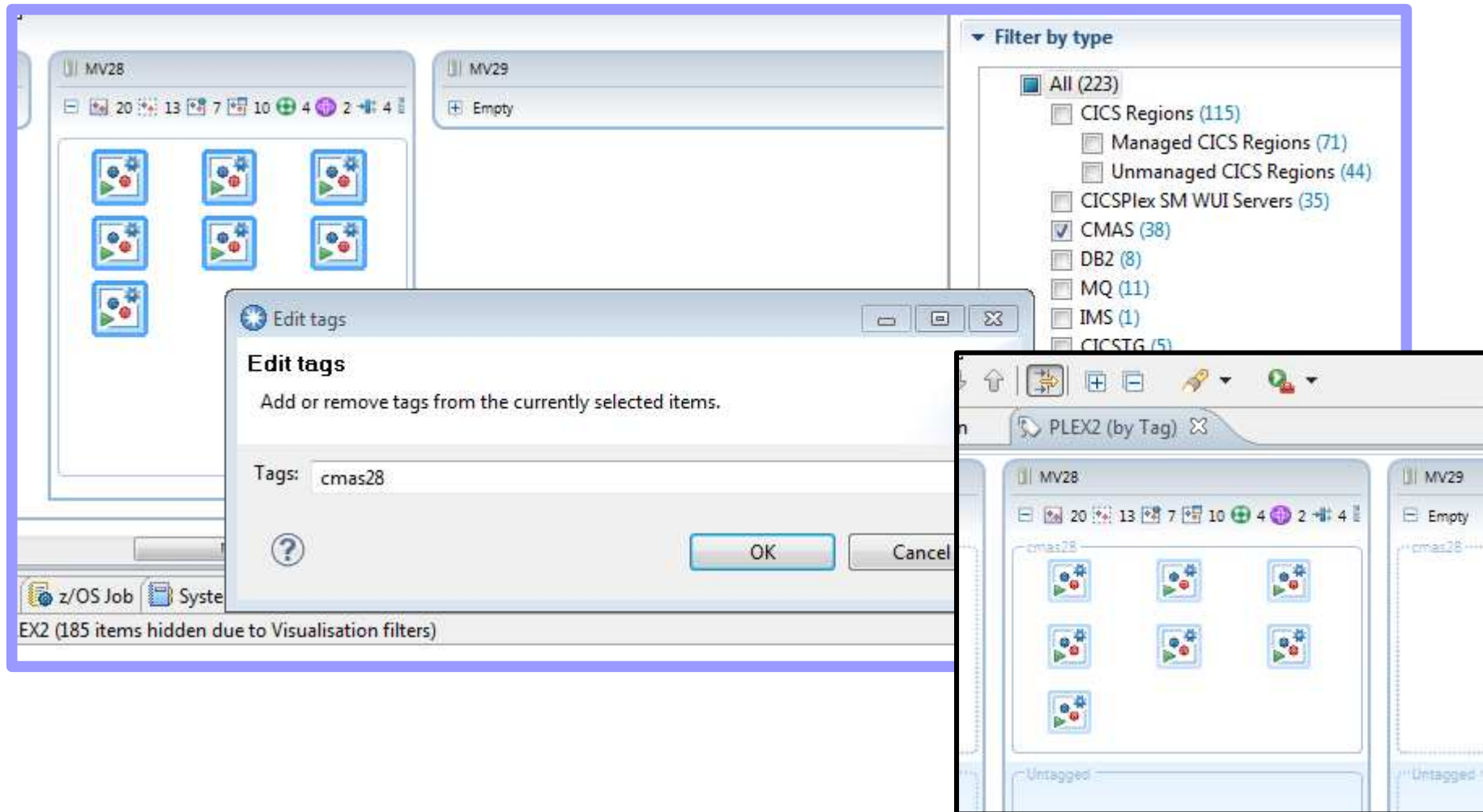
The screenshot shows the 'Managed CICS Region' editor for region 'IICYZC24'. The interface is divided into several sections:

- Details:** APPLID: IICYZC24, Job Name: CICSC132, Program: DFHSIP, Version: 3.2 (0650), z/OS System: [MV2E](#), CICSplex: [TOOLPLX2](#), MAS: CICSC132.
- Start and Stop policies:** No start policy specified (Specify start policy button), Stop policy (default stop command) (Update stop policy button).
- CICSplex SM:** CMAS: [IICYZC27](#), MON Spec: ., RTA Spec: ., WLM Spec: [WLMSPEC1](#).
- Subsystems:** DB2: [DF2E](#), MQ: ., IMS: .
- Last known status:** Status: Running, User: SYSTASK, Job ID: [STC05519](#). Includes Start and Stop buttons.
- System Groups:** TOOLGRP1, TORGRP1.
- CICS Connectivity:** IICYZC25 (CICWS32) (Open button).

At the bottom, there is a 'Clone CICS Region' button and a 'Managed CICS Region' label.

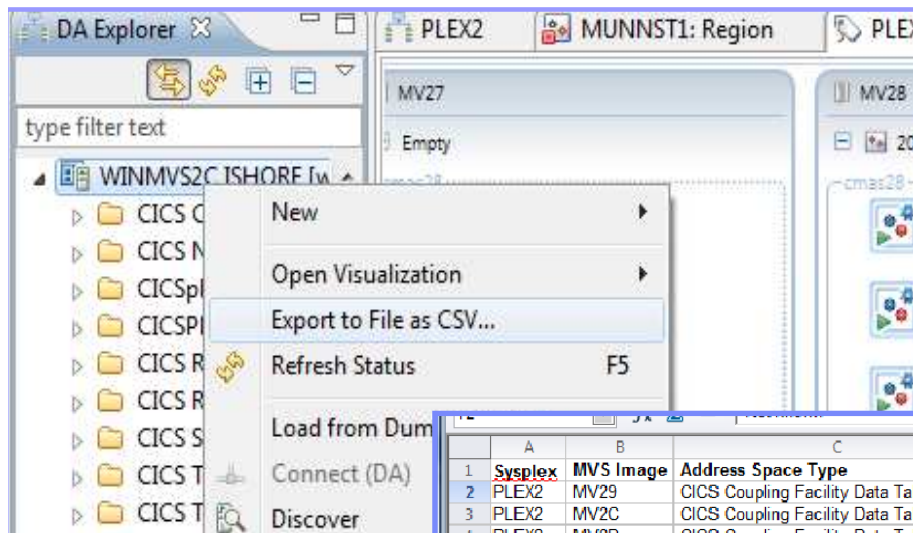
CICS DA V5.1 – Tagging

Adding tags to multiple elements from visualisation



CICS DA V5.1 – Reporting

Export to File as CSV



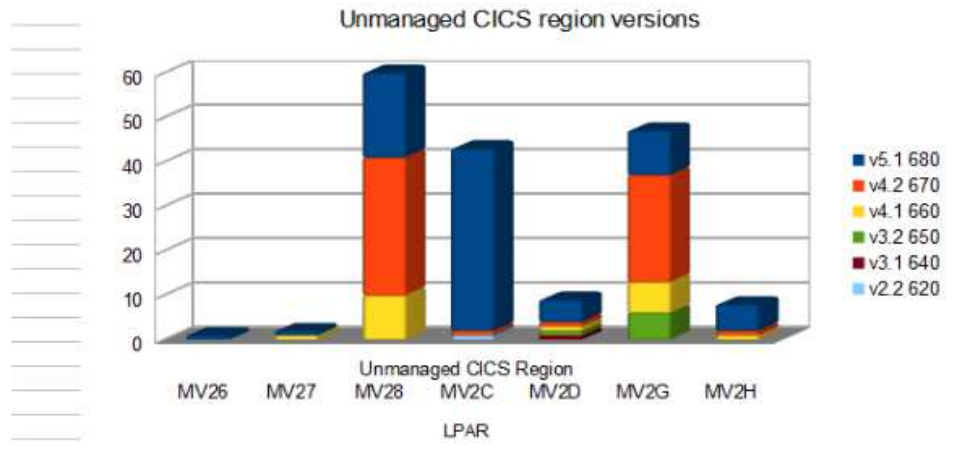
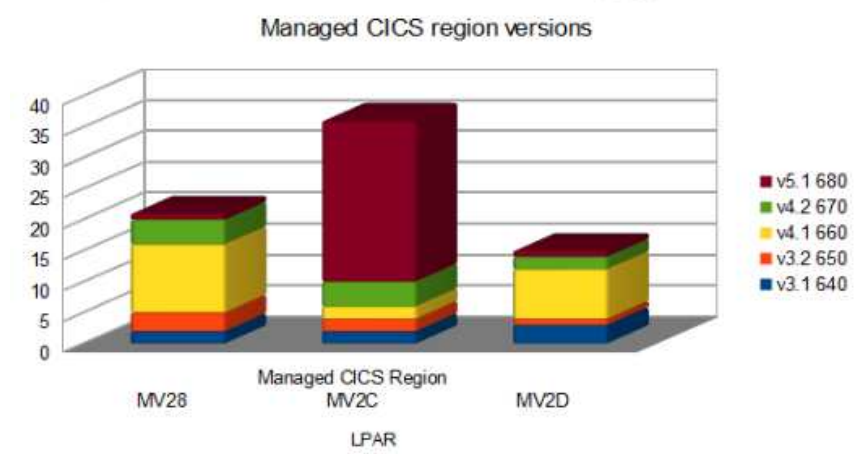
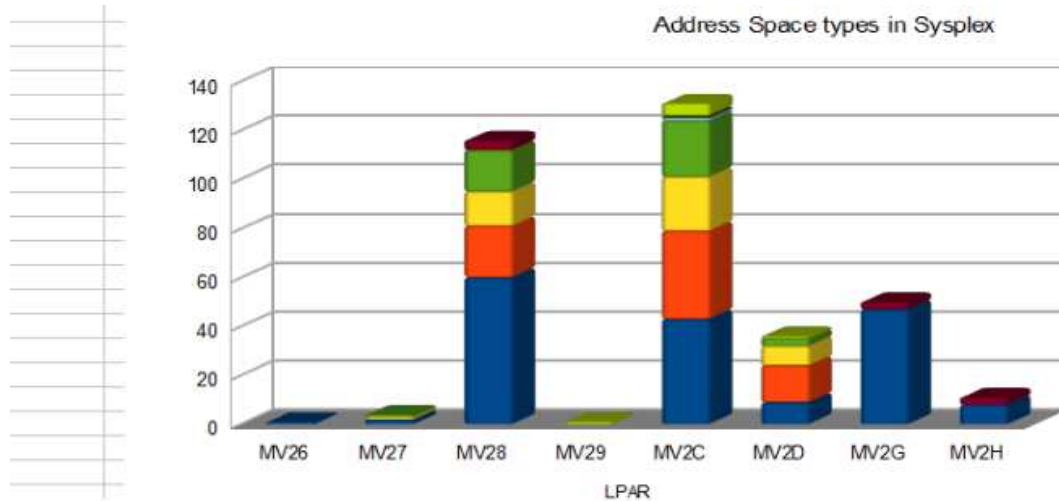
Load directly into a spreadsheet tool

	A	B	C	D	E	F	G	H	I	J
	Sysplex	MVS Image	Address Space Type	Name / Job Name	APPLID	Version	IPIC Connections	MRO Connections	ISC Connections	Tags
1	PLEX2	MV29	CICS Coupling Facility Data Table Server	CF29RTS1	N/A	Not Known	N/A	N/A	N/A	
2	PLEX2	MV2C	CICS Coupling Facility Data Table Server	CF2CRTS1	N/A	Not Known	N/A	N/A	N/A	
3	PLEX2	MV2D	CICS Coupling Facility Data Table Server	CF2DRTS1	N/A	Not Known	N/A	N/A	N/A	
4	PLEX2	MV2C	CICS Coupling Facility Data Table Server	CICSGBDT	N/A	Not Known	N/A	N/A	N/A	
5	PLEX2	MV2C	CICS Coupling Facility Data Table Server	CVMRS2C	N/A	Not Known	N/A	N/A	N/A	
6	PLEX2	MV2C	CICS Coupling Facility Data Table Server	DFHCF2C4	N/A	Not Known	N/A	N/A	N/A	
7	PLEX2	MV2C	CICS Coupling Facility Data Table Server	DFHCF2C6	N/A	Not Known	N/A	N/A	N/A	
8	PLEX2	MV2C	CICS Named Counter Server	CICSGBNC	N/A	Not Known	N/A	N/A	N/A	
9	PLEX2	MV2C	CICS Temporary Storage Queue Server	CICSGBTS	N/A	Not Known	N/A	N/A	N/A	
10	PLEX2	MV2H	CICS Transaction Gateway	CSTGWY1	N/A	Not Known	N/A	N/A	N/A	
11	PLEX2	MV28	CICS Transaction Gateway	CTG710L1	N/A	Not Known	N/A	N/A	N/A	
12	PLEX2	MV28	CICS Transaction Gateway	CTG720L1	N/A	Not Known	N/A	N/A	N/A	
13	PLEX2	MV28	CICS Transaction Gateway	CTG720L2	N/A	Not Known	N/A	N/A	N/A	
14	PLEX2	MV2G	CICS Transaction Gateway	CTG800	N/A	Not Known	N/A	N/A	N/A	
15	PLEX2	MV28	CICS Transaction Gateway	CTG800L1	N/A	Not Known	N/A	N/A	N/A	
16	PLEX2	MV2G	CICS Transaction Gateway	CTG810	N/A	Not Known	N/A	N/A	N/A	
17	PLEX2	MV2G	CICS Transaction Gateway	IYCTGZ1	N/A	Not Known	N/A	N/A	N/A	
18	PLEX2	MV2H	CICS Transaction Gateway	IYCTGZ2	N/A	Not Known	N/A	N/A	N/A	
19	PLEX2	MV2H	CICS Transaction Gateway	SBCTG01	N/A	Not Known	N/A	N/A	N/A	
20	PLEX2	MV2C	CICSplex SM Server	@RWU1	IYK3Z0I2	680	0	0	0	
21	PLEX2	MV2C	CICSplex SM Server	CAWU11	CAWU11	680	0	0	0	
22	PLEX2	MV2C	CICSplex SM Server	CI13JTD5	IYK2Z2G1	680	0	0	3	
23	PLEX2	MV2C	CICSplex SM Server	CICSGBS1	IYK2Z2FV1	680	1	2	2	
24	PLEX2	MV2C	CICSplex SM Server	CICSWUIM	CICSWUIM	680	0	0	0	
25	PLEX2	MV2C	CICSplex SM Server	CVMD6W1	CVMD6W1	680	0	0	0	
26	PLEX2	MV2C	CICSplex SM Server							

Complete your sessions evaluation online at SHARE.org/BostonEval



CICS DA V5.1 – Reporting



Complete your sessions evaluation online at SHARE.org/BostonEval



CICS DA V5.1 – Deployment

- Selection of deployment actions available – One extended scenario here
 - ▶ Starting with no CPSM and a selection of unmanaged regions
 - ▶ Convert to a scalable CPSM managed CICSplex
 - Create CPSM ‘Management Facility’
 - Create a CICSplex to contain our regions
 - Bring an unmanaged CICS region under CPSM management
 - Clone our managed region
- Demonstrated in a series of videos on IBM Education Assistant:
http://publib.boulder.ibm.com/infocenter/ieduasst/stgv1r0/index.jsp?topic=/com.ibm.iea.cicsda/plugin_coverpage.html

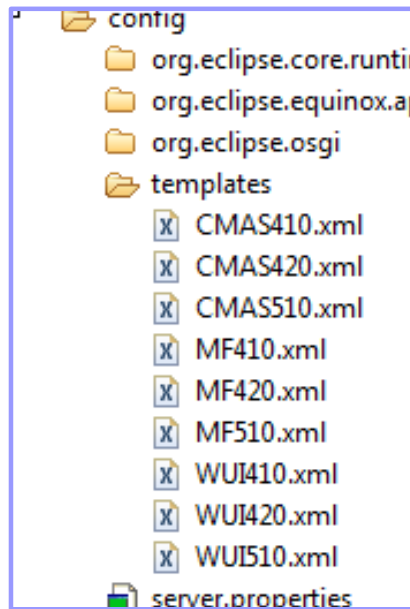
CICS DA V5.1 – Deployment



Create a CICSplex management facility

Step 1 – update templates (once only)

Update with your environments HLQs



```
YCYZC24: Region  /u/ctoolda/cicsdas/templates/MP510.xml  /u/ctoolda/cicsdas/templates/CMAS510.xml
<?xml version="1.0" encoding="UTF-8"?>
<CICSRegionTemplate name="CMAS510" xmlns="http://com.ibm.cphtemplate"
  xmlns:xsi="http://www.w3.org/2001/XMLSchema-instance">
  <!--
    The following elements MUST be modified to the correct values for the local installation:

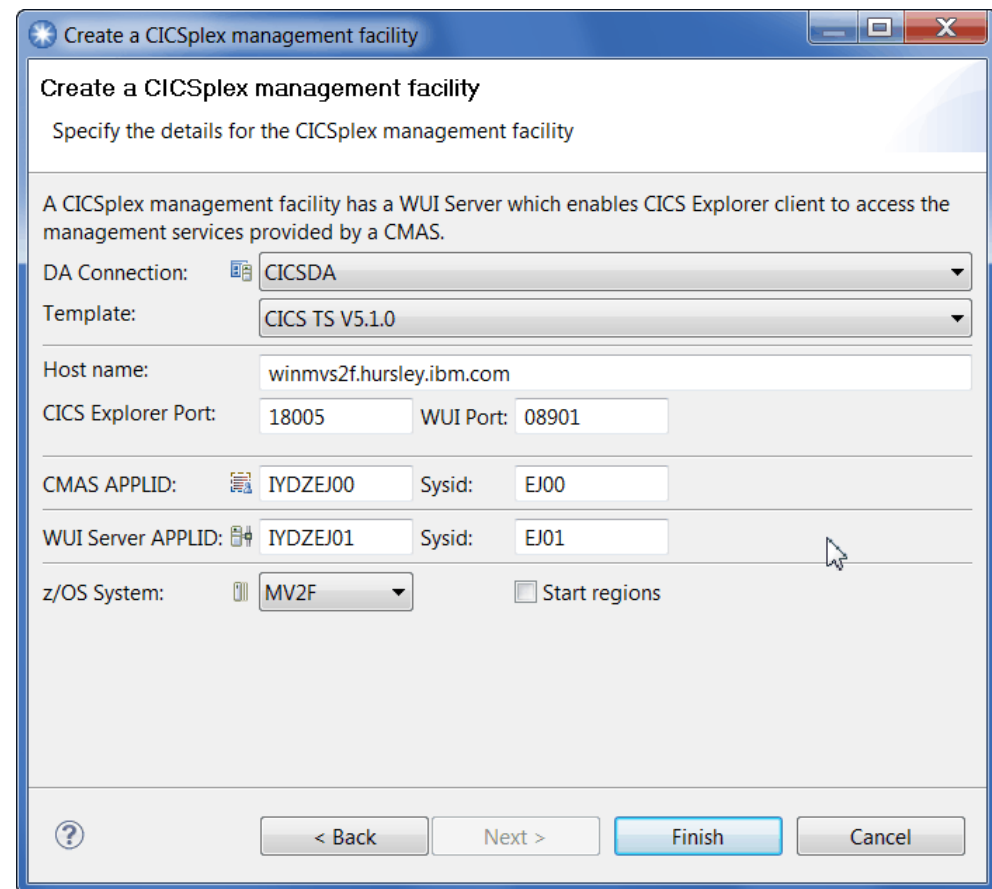
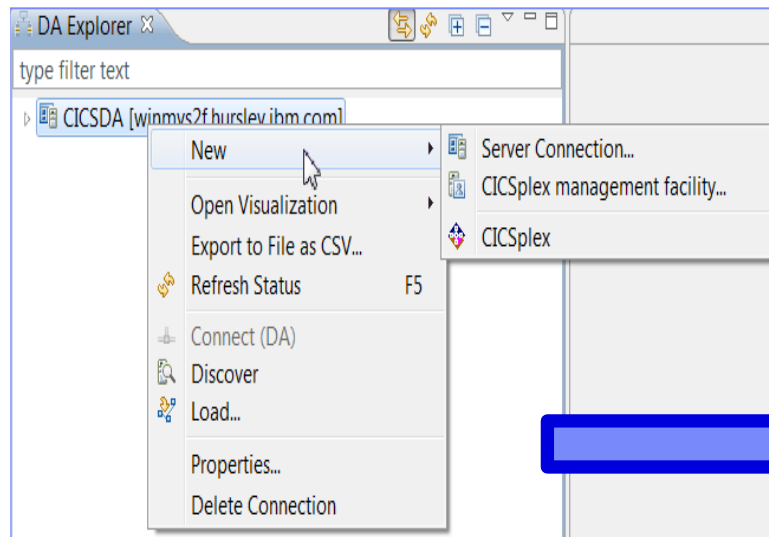
    jclLocation - defines where the generated JCL for this region is stored
    jobcard - defines the job card used when submitting the JCL for this region
    steplib - defines the libraries required in this region's STEPLIB concatenation. You can add more lines if req
    dfhrpl - defines the libraries required in this region's DFHRPL concatenation. You can add more lines if req
    datasetPrefix - the prefix used when allocating data sets for this region
  -->

  <jclLocation>REDTOOLS.CPSM51.PROCLIB(CMASJOB)</jclLocation>
  <jobcard>//JOBNAMEC JOB </jobcard>
  <steplib>
    <line>BLD.CICSSPA.INCCUR.SEYUAUTH</line>
    <line>CEE.SCEERUN</line>
    <line>BLD.CICSSPA.INCCUR.SDFHAUTH</line>
  </steplib>
  <dfhrpl>
    <line>REDTOOLS.CPSM51.TABLIB</line>
    <line>BLD.CICSSPA.INCCUR.SEYULOAD</line>
    <line>CEE.SCEERUN</line>
    <line>BLD.CICSSPA.INCCUR.SDFHLOAD</line>
  </dfhrpl>
  <datasetPrefix>REDTOOLS.CPSM51</datasetPrefix>
```

CICS DA V5.1 – Deployment

Create a CICSplex management facility

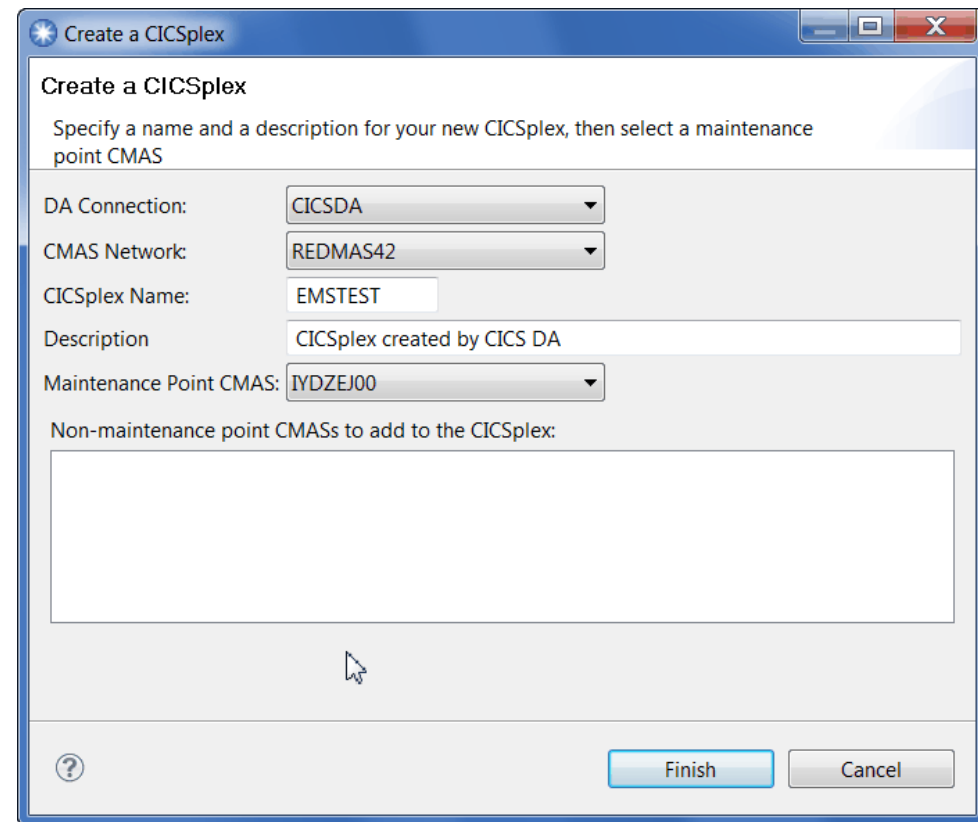
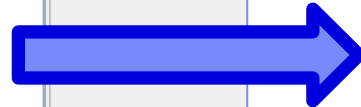
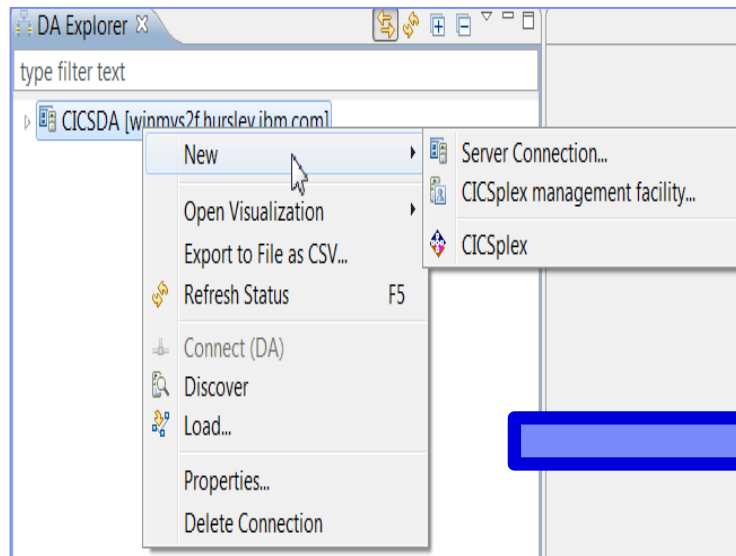
Step 2 – select New->CICSplex management facility



CICS DA V5.1 – Deployment

Create a CICSplex

Step 1 – select New->CICSplex



CICS DA V5.1 – Deployment

‘Plexify’ your unmanaged regions



Benefits

- 3 steps to a managed region
- Manage your region from the CICS SM Explorer perspective

Discover

Visualize

Unmanaged regions

Manage

CICS DA V5.1 – Deployment

Clone a managed region



CICSplex:
MAS:

- IYCYZC2N (CICSC351) [MV2E], [TOOLPLX5]
- IYDZEJ06 (REDFOR42) [MV2F], [REDBPLEX]
- IYDZEJ07 (REDDVA42) [MV2F], [REDDPLEX]
- IYDZEJ0A (REDDVB42) [MV2F], [REDDPLEX]
- IYDZZ418 [MV2F], [CICSIAPL]
- IYDZZ514 [MV2F], [CICSIAMM]
- IYDZZ518 [MV2F], [CICSIAPL]
- IYDZZ519 [MV2F], [CICSIAPL]

CICS Regions - Unmanaged (30)
CICS System Groups (14)
CMAS Networks (8)
CMASs (9)
DB2 (8)
IMS (1)
WebSphere MO (3)

Jobs: REDDVA42 User: *
REDDVA42 - STC06772 (CTOOLUSR)

- New
- Open
- Edit tags...
- Refresh Status F5
- Delete from model Delete
- Start region
- Stop region
- Clone Region
- Dependencies
- Transaction summary
- Show SIT Parameters
- Show in CICS Explorer
- Find DB2 Resources
- Find MQ Resources



Clone a CICS Region

Clone a CICS region

It is recommended that applid and MAS name match

New APPLID: IYDZEJ09
New CICS Sysid: EJ09
New MAS Name: REDDVA43
New Description: Region cloned from REDDVA42 by CICS DA

Specify the start policy for your new CICS region.

Data Set: USER.PROCLIB
Member Name: REDDVA43

< Back **Next >** Finish Cancel



Clone a CICS Region

Confirm the names for the new data set members

Confirm the names for the new data set members to be created if applicable on finish

JCL Include Member Changes

Data Set Name	Old Member Name	New Member Name

SIT Member Changes

Data Set Name	Old Member Name	New Member Name
REDTOOLS.CPSM42.SYSIN	FOREJ07	FOREJ08

EYUPARM Member Changes

Data Set Name	Old Member Name	New Member Name
REDTOOLS.CPSM42.SYSIN	MASEJ07	MASEJ08

< Back **Next >** Finish Cancel



Clone a CICS Region

Confirm the values for the new data sets

Confirm values for the new data sets which will be created on finish

DD Name	Share	Existing Data set	New Data set
DFHAUXT	<input type="checkbox"/>	REDTOOLS.REDDVA42.DFHAUXT	REDTOOLS.REDDVA43.DFHAUXT
DFHBUXT	<input type="checkbox"/>	REDTOOLS.REDDVA42.DFHBUXT	REDTOOLS.REDDVA43.DFHBUXT
DFHCMACD	<input checked="" type="checkbox"/>	REDTOOLS.REDDVA42.DFHCMACD	REDTOOLS.REDDVA43.DFHCMACD
DFHDMPA	<input type="checkbox"/>	REDTOOLS.REDDVA42.DFHDMPA	REDTOOLS.REDDVA43.DFHDMPA
DFHDMPB	<input type="checkbox"/>	REDTOOLS.REDDVA42.DFHDMPB	REDTOOLS.REDDVA43.DFHDMPB
DFHGCD	<input type="checkbox"/>	REDTOOLS.REDDVA42.DFHGCD	REDTOOLS.REDDVA43.DFHGCD
DFHINTRA	<input type="checkbox"/>	REDTOOLS.REDDVA42.DFHINTRA	REDTOOLS.REDDVA43.DFHINTRA
DFHLCD	<input type="checkbox"/>	REDTOOLS.REDDVA42.DFHLCD	REDTOOLS.REDDVA43.DFHLCD
DFHLRQ	<input type="checkbox"/>	REDTOOLS.REDDVA42.DFHLRQ	REDTOOLS.REDDVA43.DFHLRQ
DFHTEMP	<input type="checkbox"/>	REDTOOLS.REDDVA42.DFHTEMP	REDTOOLS.REDDVA43.DFHTEMP

Job name: REDDVA43

< Back **Next >** Finish Cancel

Value of CICS Deployment Assistant for z/OS V5.1

- Reduce costs, risks, and dependency on specialized CICS skills
- Discover your systems' topology quickly
- View, print, and manage your CICS infrastructure
- Deploy new environments rapidly
- Promote standardization and reduce complexity
- Simplify and automate complex tasks



CICS Showcase – ibm.com/cics/showcase

CICS Showcase

Visit www.ibm.com/cics/showcase

to find the latest content to help you get the most out of the CICS Portfolio

- Videos
- Analyst Papers
- Podcasts
- Demonstrations

Come back each month to see the latest updates

IBM – CICS Showcase

www.ibm.com/cics/showcase

United States Welcome Mr. Geoffrey Prie | IBM Sign in

Industries & solutions Services Products Support & downloads My IBM

IBM Software Host Transaction Processing CICS family

CICS Showcase

Videos, Podcasts, Papers. Your portal to CICS information.

We think CICS is great – but don't take our word for it...

"To me CICS 5.1 is a message from IBM loud and clear that customer investments in CICS applications and data can and will play a significant part in cloud based architectures of the future."

Russ Teubner, HostBridge Technology

Running the world's businesses

100 000 000 000 transactions a day

Introducing the CICS Portfolio V5.1

Introducing CICS V5.1
Powering the planet

Operational efficiency and service agility, with cloud enablement

Learn how the CICS V5.1 Portfolio can add value to your business in this introduction. Want to know more? Read the full [Introduction to the CICS Portfolio \(PDF, 7.4MB\)](#).

Read all about it

- CICS V5.1: Learning from the cloud (340KB)
An analyst report from the Bathwick Group
- IBM CICS Tools: Discovery and optimization for the next generation (1.15MB)
An analyst report from the Branham Group
- Case Study: Garant! Bank pushes the boundaries of efficient processing (630KB)
Capitalizing on the newest optimization features of IBM CICS Transaction Server software

Google us or check us out at:

 ibm/developerworks/cicsdev

 facebook.com/IBMCICS

 twitter.com/IBM_CICS


 youtube.com/cicsfluff

 youtube.com/cicsexplorer



 twitter.com/IBM_System_z

 CICS Explorer Forum
ibm.com/developerworks/forums/forum.jspa?forumID=1475&start=0

 CICS-L list Forum
listserv.uga.edu/archives/cics-l.html

Questions

