



# A System z Developer's Journey Through the Application Lifecycle

Rosalind Radcliffe / Dana Boudreau  
IBM  
August 2013

Session #: **13686**



Monday, August 12, 2013: 03:00 PM - 04:00 PM, Hynes, Room 204



# Scenario



JK Enterprises has a business need to provide to make a quick update to an existing application and work on a Mobile front end

IT scenario is:

- Establish a requirement
- Break the requirement into working tasks, plan and assign them
- Execute on the tasks defined ensuring a level of quality before promoting it to the next stage
- Promote the changes to final test

## Products to be demonstrated

Collaborative Lifecycle Management (CLM)

- **Rational Team Concert (RTC)**
- **Rational Requirements Composer (RRC)**
- Rational Quality Manager

Rational Developer for System z (RDz)

Rational Development and Test Environment for System z (RD&T)

Worklight Server

# Scenario

JK Enterprises has a business need to provide to make a quick update to an existing application and work on a Mobile front end

IT scenario is:

- Establish a requirement  
Requirements Composer(RRC)
- Break the requirement into working tasks, plan and assign them  
Team Concert (RTC)
- Execute on those tasks defined creating a level of quality before promoting it to the next stage  
Developer for System z (RDz)  
Development and Test Env. (RD&T)
- Promote the changes to final test  
Team Concert (RTC)

## Rational Team Concert:

### Workbench for Collaborative Lifecycle Management



A robust, extensible solution for analysts, developers and quality professionals



Complete your sessions evaluation online at [SHARE.org/BostonEval](http://SHARE.org/BostonEval)



# Rational Developer for System z

## ► What is RDz

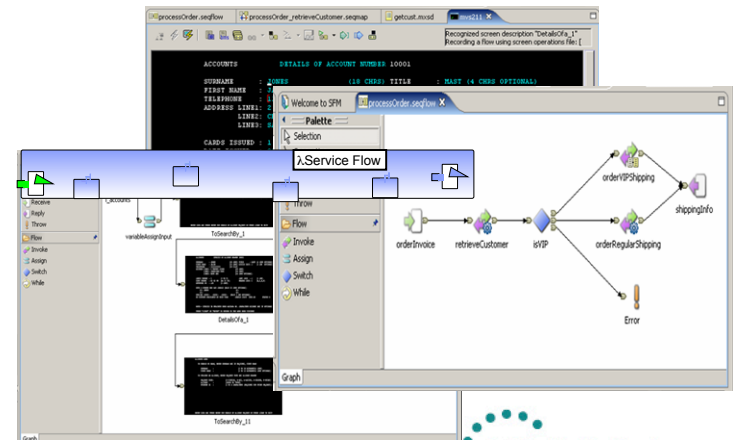
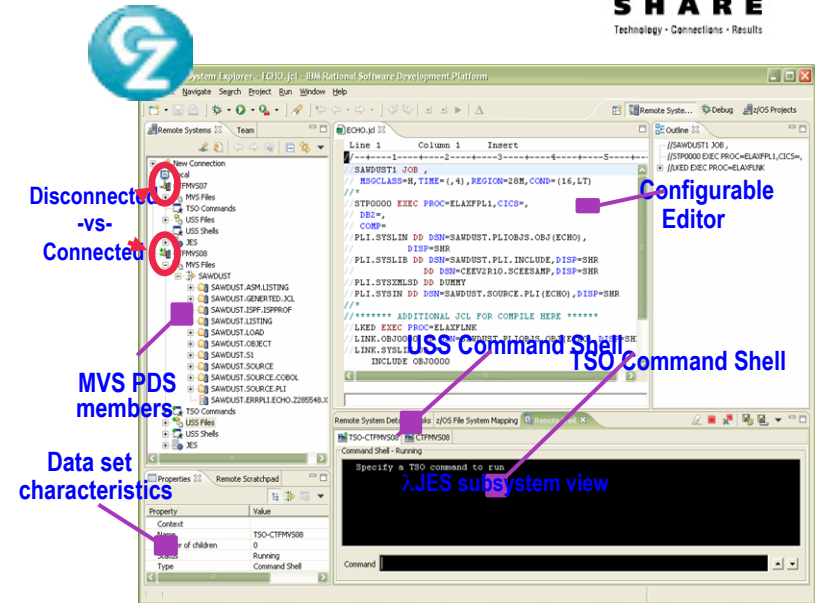
- Eclipse-based IDE speeding modern composite (SOA) application development

## ► RDz supports Enterprise Modernization

- Supports common IDE for COBOL, PL/I, C/C++, HLASM, Java, EGL and web services
- Transforms UML to COBOL source code
- Provides interactive access to z/OS for development, debug, job generation, submission, monitoring, command execution
- Supports new and existing runtimes (CICS, IMS, Batch, USS, DB2 SP, WAS)

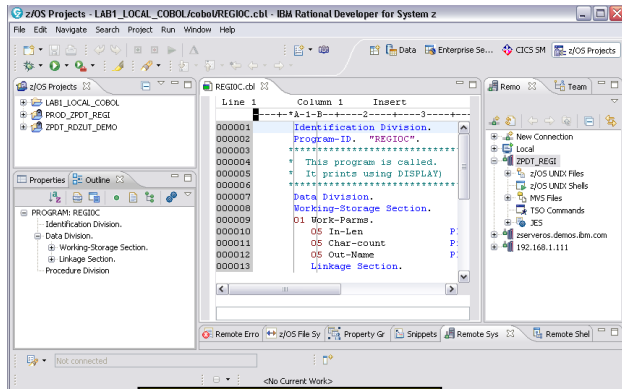
## ► RDz supports SOA

- Enables CICS and IMS applications for web services and SOA
- Supports for J2EE, JCA, XML, web services



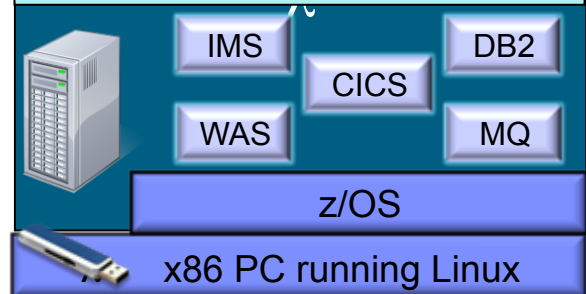


# Using RD&T



**RDz Client**

COBOL, PL/I, C++, Java, EGL, Batch,  
Assembler, Debug Tool



**RD&T**



AUG 11 2010

Complete your session



# Develop Mobile Apps



Integration with Team  
Concert for Lifecycle and  
Source Management



## IBM Worklight Studio with Rational Developer for zEnterprise



- Built on Eclipse
- Common tool set for end to end development
- Build, preview, and deploy within the IDE
- Mobile simulator (for unit test)
- End-to-end debug
- Integrate with third-party SDKs (e.g. Android Development Tools)

COBOL

WL  
Adapters

Java

Native App  
with HTML,  
JS, CSS

System z



WebSphere Application Server  
with IBM Worklight Server



Mobile



in Boston

Complete your sessions evaluation online at [SHARE.org/BostonEval](http://SHARE.org/BostonEval)





[www.ibm/software/rational](http://www.ibm/software/rational)

Complete your sessions evaluation online at [SHARE.org/BostonEval](http://SHARE.org/BostonEval)