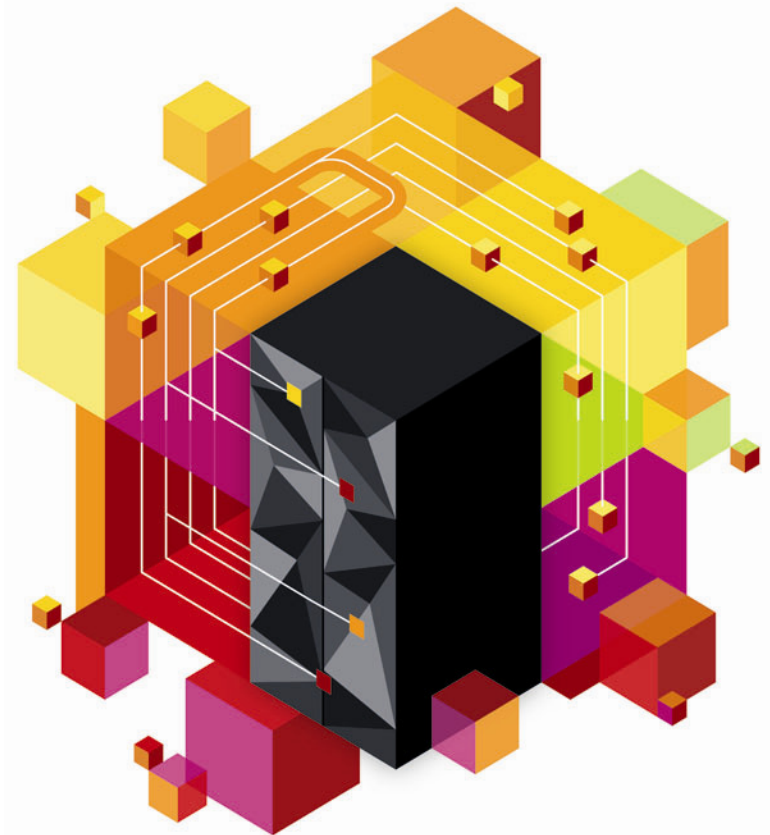




# Session 13157: Lunch and Learn: Live demo! New IBM CICS Tools and IBM Problem Determination Tools



Presenter – Eric Higgins [erichiggins@us.ibm.com](mailto:erichiggins@us.ibm.com)  
Vikram Manchala [vikramm@us.ibm.com](mailto:vikramm@us.ibm.com)

Date 02/05/2013

© 2013 IBM Corporation



## Preface

- **The following terms are trademarks or registered trademarks of the International Business Machines Corporation in the United States and/or other countries:**
  - CICS, CICS Explorer, CICSplex SM, DB2, IMS, MQSeries, WebSphere, IBM, SupportPac, z/OS, zSeries, Tivoli, Tivoli Enterprise, OMEGAMON XE
- **Java and all Java-based trademarks and logos are trademarks or registered trademarks of Sun Microsystems, Inc. in the United States and/or other countries.**
- **Microsoft, Windows, and the Windows logo are trademarks of Microsoft Corporation in the United States, other countries, or both.**
- **Other company, product, service names, and logos may be trademarks or service marks of others.**



## IBM Problem Determination Tools Version 12.1



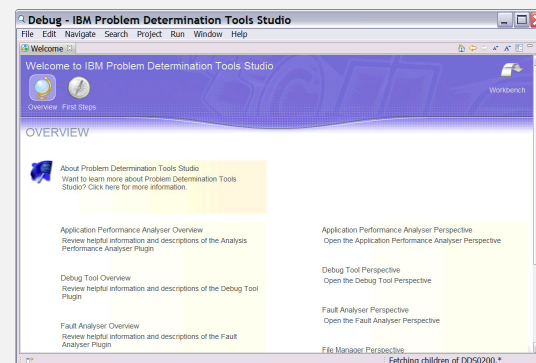
### *Tools to address your z/OS Development or System Programming needs*

#### *What's new in PD Tools V12.1*

- New **IBM Problem Determination Tools Studio** pre-packaged with plug-ins
- File Manager DB2 and CICS plug-in
- Initial Workload Simulator plug-in
- Enhanced integration and synergy amongst PD Tools, CICS Explorer and/or IMS Explorer taking advantage of newly announce common z/OS Explorer capabilities
- CICS TS 4.2, IMS V12, MQ 8.1 updates to ensure synchronization with latest subsystems
- Improved Java support in APA and FA

#### *PD Tools provides ...*

- Five tools addressing z/OS problem resolution needs - Debug Tool, Fault Analyzer, File Manager, Application Performance Analyzer and Workload Simulator
- Subsystem and language support traversing z/OS provided in a timely manner when subsystems and languages are updated
- Improved TCO with full function tools at competitive price

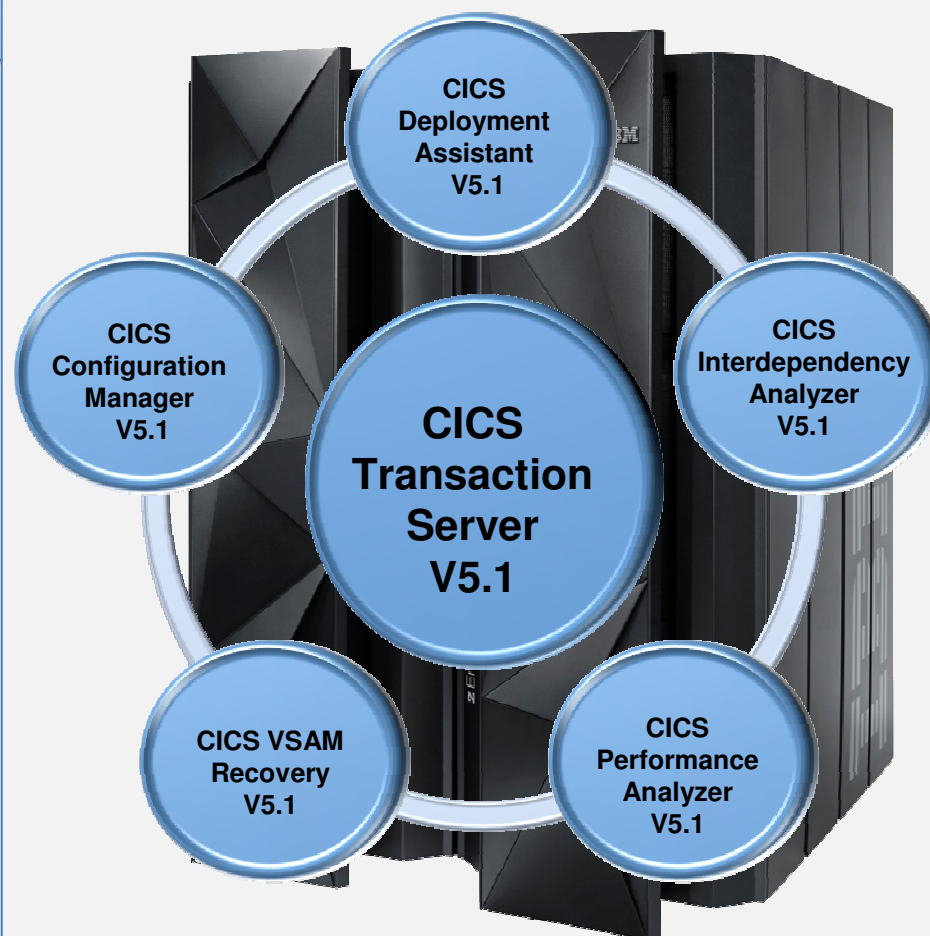




## *Five core CICS Tools – Day one CICS TS V5.1 exploitation*

*Fully integrated with CICS TS & CICS Explorer*

- Discovery and visualization aids insight into application and platform dependencies
- Automation speeds service delivery and ensures standardization and governance
- Modern, integrated user interfaces lower skills barrier
- Day-1 exploitation of CICS TS V5.1 new capabilities reduces time to value
- Five core tools support and extend the CICS runtime



# IBM CICS Explorer® V5.1



**Enhanced!**

Session and user views, Configuration, Broadcast, User and Admin commands

**ISM**

**New!**

Migrated file view

**VT**

IMS DB mgt

**IMS Explorer**

Configuration  
Status  
Control, Test

**MQ**

Status  
Situations  
Topology

**XE**

Threadsafe, File, CPU, Response & Wait analysis, Statistics, Alerts, Graphical and Sheet views

**PA**

Daemon & Connection Status & Test

**TG**

Develop  
Test

**RDz**

Manipulate, browse z/OS data sets, z/FS, VSAM, MQ, CICS, DB2

**FM**

CICS, IMS, DB2, & z/OS  
Abend Reporting & Diagnosis

**FA**

Deployment, Discovery, Visualization, Cloning, Automation & Control

**DA**

CICS, IMS, DB2, & z/OS  
Application Debugging

**DT**

CICS, IMS, DB2, & z/OS  
Observation Requests & Reporting

**APA**



**Enhanced!**

Execution Tree  
Dependencies  
Queries  
Command Flow

**IA**

CRUD, Install, History, Backout, Audit, Search, Compare, Packaging

**CM**

CRUD, Install, Control, Filter, Sort, Topology, Events, ATOM, Java, WLM, Txn Tracking, Copy/Paste, Cloud, Web apps

**SM**

**Enhanced!**

3270 application performance testing

**WSIM**

Complete PD Tools workbench

**New!**

**PDT Studio**

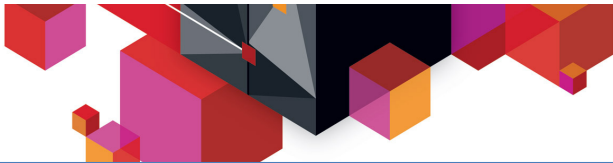
SM	CICS Transaction Server
IA	CICS Interdependency Analyzer
PA	CICS Performance Analyzer
CM	CICS Configuration Manager
DA	CICS Deployment Assistant
TG	CICS Transaction Gateway
ISM	IBM Session Manager
VT	CICS VAM Transparency

z/OS Connections, z/OS Datasets, zFS Files, JES

**z/OS Explorer**

**CICS TS, IMS, DB2, MQ, z/OS**

APA	Application Performance Analyzer
FA	Fault Analyzer
DT	Debug Tool
FM	File Manager
WSIM	Workload Simulator
MQ	WebSphere MQ
XE	OMEGAMON XE for CICS
RDz	Rational Developer for System z

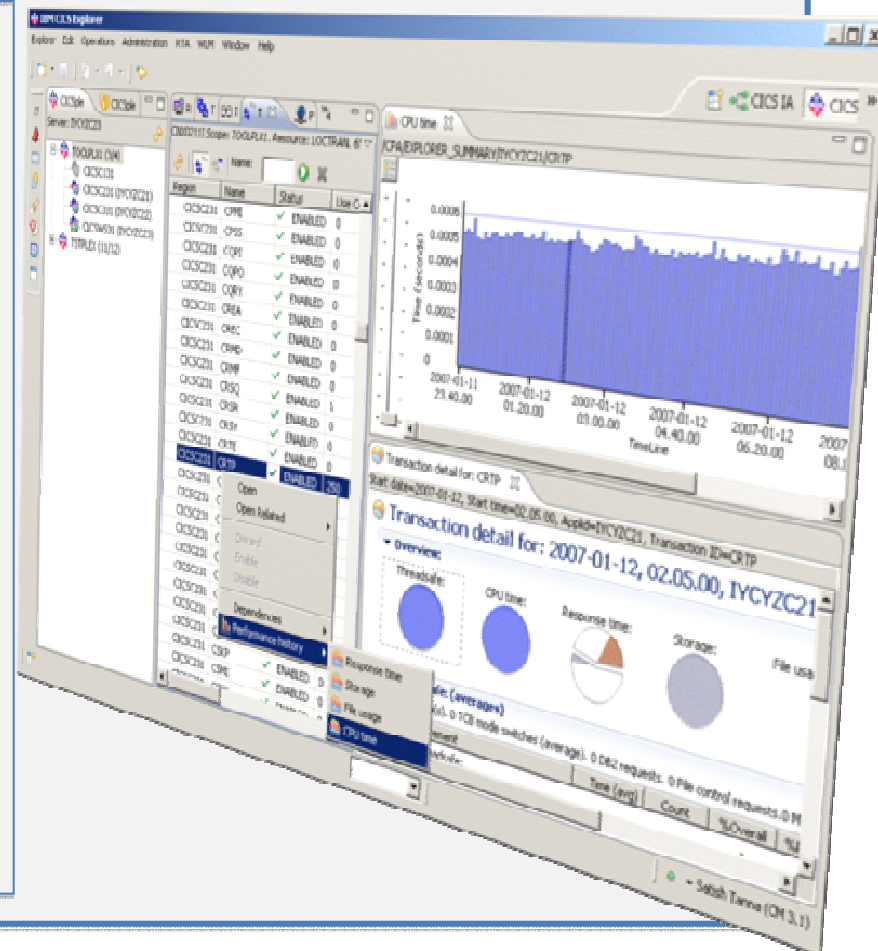


## Live Demonstration via CICS Explorer Using PD and CICS tools plug-ins

### The General Insurance Application (GENAPP)

The general insurance application is a working COBOL application that you can use to try out different features of CICS.

- The general insurance application simulates transactions made by an insurance company to create and manage its customers and insurance policies.
- The application provides sample data and a 3270 interface for creating and inquiring on customers and policy information. Because the application is designed to simulate the flow of an application, some aspects of the application architecture do not use best practices.
- However, the application is designed to be extended to demonstrate other ways of accessing and transforming traditional applications that are best practices.
- GENAPP is available described in greater detail in the CICS V51 info-center and is also available as supportpac CB12.





## **Session 13157**

**Lunch and Learn: Live demo! New IBM CICS Tools and IBM Problem Determination Tools Efficiently Support the z/OS Ecosystem**

**Product Descriptions and Sources of Information**



# CICS Deployment Assistant for z/OS V5.1



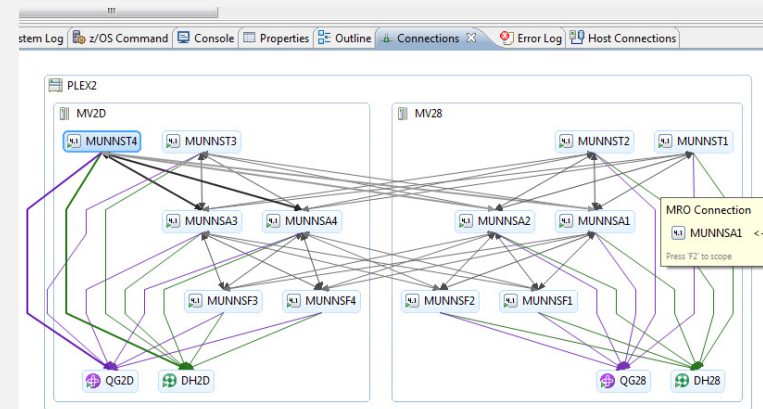
## CICS Discovery and Provisioning

### What's new in CICS DA V5.1...

- Enriched discovery of over 30 entities
- Improved visualization with tagging and filtering
- Connections view with scoping
- Export model for external reporting
- CICS TS V5.1 upgrade cheat sheet
- Tagging and filtering of model elements
- New navigators
- Clone JCL improvements
- IPv6 support
- Virtual IP addressing support
- Serviceability enhancements

### CICS DA enables you to...

- Visualize and manage your CICS topology
- Discover existing regions and sub-systems
- Automation creates new CICSplex
- Plexify and clone CICS regions
- Start and stop a CICS region





# CICS Performance Analyzer for z/OS V5.1



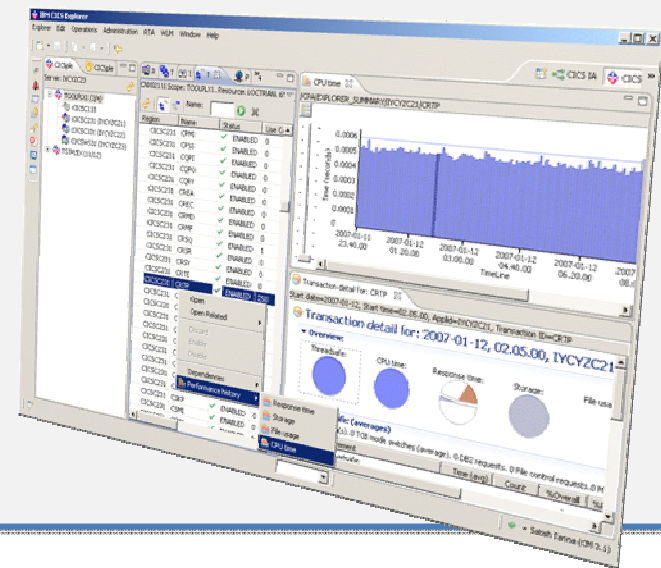
## Performance insight

### What's new in CICS PA V5.1...

- CICS TS V5.1 – support for new metrics
- Application, Platform, and Policy
- Plug-in enhancements:
  - Application centric view
  - Customizable sheet views
  - Suspend time reporting
  - Easy navigation to key reports and alerts
- SMF log stream support
- Batch statistics reporting for CICS TG
- Improved management of PA data loaded to DB2
- CPU totals on MQ reports
- SMF data processing performance improvements

### CICS PA enables you to...

- Comprehensive Performance Reporting and Analysis for CICS including DB2, WebSphere MQ, and MVS System Logger
- Understand trends and develop capacity plans
- View statistics and create statistical alerts





# CICS Interdependency Analyzer for z/OS V5.1



## Application Understanding

### What's new in CICS IA V5.1...

- Support for CICS Transaction Server V5.1, including enhanced business application analysis
- New threadsafe analysis plug-in view and report
- Improved installation and configuration
- DB2 data lifecycle management
- Native SQL language stored procedures
- Graphical visualization view of resources

### CICS IA enables you to...

- Identify threadsafe / non-threadsafe programs
- Isolate and remove affinities
- Speed CICSplex® SM workload management
- Advanced CICS command flow analysis
- Highlight CICS web service candidates

Collection ID	Resource	Type	Class	Program	User	Status
TST4CVD1	TST4CVD1	QUEUE	CSQ4VMD1	000000	000000	Y
	TST4CVD1	QUEUE	CSQ4VMD1	000000	000000	Y
	TST4CVD1	QUEUE	CSQ4VMD1	000000	000000	Y
	TST4CVD1	QUEUE	CSQ4VMD1	000000	000000	Y
TST4CVD2	TST4CVD2	QUEUE	CSQ4VMD2	000000	000000	Y
	TST4CVD2	QUEUE	CSQ4VMD2	000000	000000	Y
	TST4CVD2	QUEUE	CSQ4VMD2	000000	000000	Y
	TST4CVD2	QUEUE	CSQ4VMD2	000000	000000	Y
TST4CVD3	TST4CVD3	QUEUE	CSQ4VMD3	000000	000000	Y
	TST4CVD3	QUEUE	CSQ4VMD3	000000	000000	Y
	TST4CVD3	QUEUE	CSQ4VMD3	000000	000000	Y
	TST4CVD3	QUEUE	CSQ4VMD3	000000	000000	Y
TST4CVD4	TST4CVD4	QUEUE	CSQ4VMD4	000000	000000	Y
	TST4CVD4	QUEUE	CSQ4VMD4	000000	000000	Y
	TST4CVD4	QUEUE	CSQ4VMD4	000000	000000	Y
	TST4CVD4	QUEUE	CSQ4VMD4	000000	000000	Y



# Application Performance Analyzer for z/OS (APA) V12.1



## *Pinpoint enterprise application bottlenecks*

### *What's new in APA V12.1?*

- Enhanced plug-in for CICS Explorer
- Integration with z/OS Explorer credentials and connections
- Reduced memory requirement
- Improved CICS and DASD report accuracy
- Sticky notes
- Save report as HTML, PDF, XML
- Email reports
- SSL and pass-phrase support
- Numerous other enhancements

### *APA enables you to...*

- Measure and report resource use in virtually any IBM z/OS® address space
- Isolates application performance problems across entire application – subsystems (DB2, IMS, CICS, MQ, USS, WAS), languages, and DASD
- Identify constraints
- Non-intrusive
- Helps with design, development and maintenance
- Shares side files with Fault Analyzer and Debug Tool
- Broad product support:
  - C/C++, Assembler, COBOL, PL/I, Java V6.0.1, CICS TS V4.2, IMS V12, DB2, WebSphere MQ, and WebSphere Application Server



## Fault Analyzer for z/OS (FA)



*Pinpoint the cause of enterprise application failures*

### *What's new in FA V12.1...*

- Enhanced plug-in for CICS Explorer
- Integration with z/OS Explorer credentials and connections
- Pass-phrase support
- Java enhancements
- Usability enhancements

### *FA enables you to...*

- Detailed report about program failures
- Fault-history file to track and manage application failures and fault reports
- View storage contents, trace tables and terminal screen images at the time of failure
- Customize message descriptions for failure reports
- Control which users can access history files
- Plug-in support for CICS Explorer, RDz, and IMS Enterprise Explorer



# IBM Debug Tool for z/OS V12.1



## *Application insight*

### *What's new in DT V12.1*

- Enhanced plug-in for CICS Explorer
- DTCN profile plug-in integrated with CICS Explorer
- Startup at subprogram boundary
- Dynamic debugging supports applications using XPLINK linkage
- Consolidated user exits
- Enhanced remote security
- Numerous other enhancements
- Support for CICS TS V5.1 and IMS V12

### *DT enables you to...*

- Debug applications in CICS, IMS, DB2 Stored Procedures and UNIX System Services
- Source-level debugging, Multiple Conditional Unconditional breakpoints, Step mode debugging, Dynamic patching (Modify variables and Insert statements), log commands, Frequency sampler, Programmable command entry, etc
- Identify old OS/VS COBOL & VS COBOL II source code and upgrade it to IBM Enterprise COBOL or ANSI 85 standard
- One tool debugs batch, TSO, CICS, DB2, DB2 stored procedures and IMS applications written in COBOL, PL/I, C/C++ and Assembler
- Integrated development, test and debugging environment with CICS Explorer, RDz, and IMS Enterprise Explorer
- Code coverage tools



# File Manager for z/OS (FM) V12.1



*Manage a variety of enterprise data file structures*

## *What's new in FM V12.1?*

- Enhanced plug-in for CICS Explorer, including:
- Support for z/OS data sets, zFS files, CICS Files, TS and TS queues, MQ queues, and DB2 databases
- Integration with z/OS Explorer credentials and connections
- Support for CICS TS V5.1 and IMS V12
- Other Base, DB2, IMS, and plug-in enhancements

## *FM enables you to...*

- Select, create, browse, copy, edit, print, and format or reformat data files
- Manipulate data using COBOL and PL/I record layouts interactively or in batch.
- Comprehensive, user-friendly, batch and interactive utilities extends standard ISPF
- Access CICS resources with CICS transaction
- Audit logging and scrambling allow development and production use
- SQL Prototyping and Execution
- Broad product support:
  - Works with, CICS, DB2, IMS and z/OS (QSAM, VSAM, PDS, zFS) data
  - Plug-in support for CICS Explorer, RDz, and IMS Enterprise Explorer



# CICS Configuration Manager for z/OS V5.1



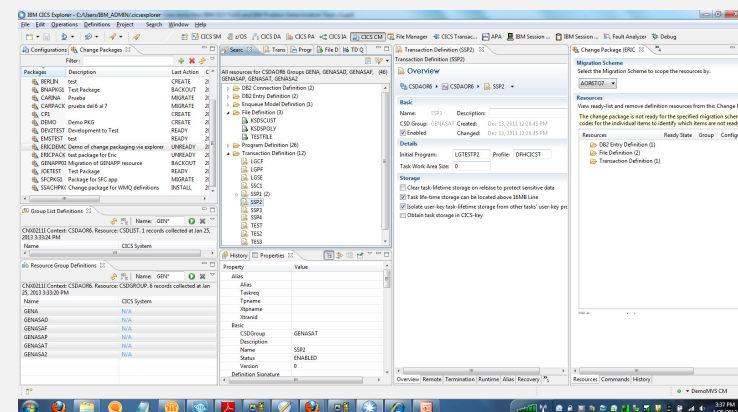
*Single point of control over CICS resource definitions*

*What's new in CICS CM V5.1...*

- Application, Platform, and Policy resources
- Enhanced plug-in with Packaging and Deployment Analysis
- Sort in Package view and Ready list
- ADD/REMOVE CSD group to/from LIST during Migrate operation
- Option to automatically remove empty Groups from CSD List
- SSL support for plug-in connection
- Audit trail for Install and NewCopy

*CICS CM enables you to...*

- Manage changes throughout the life-cycle
- Create reports to identify redundant definitions, show resource relationships, and change management history
- Manage audit, back-out and change authorizations





# CICS VSAM Recovery for z/OS V5.1

## *Reduce the risk to your VSAM Data*

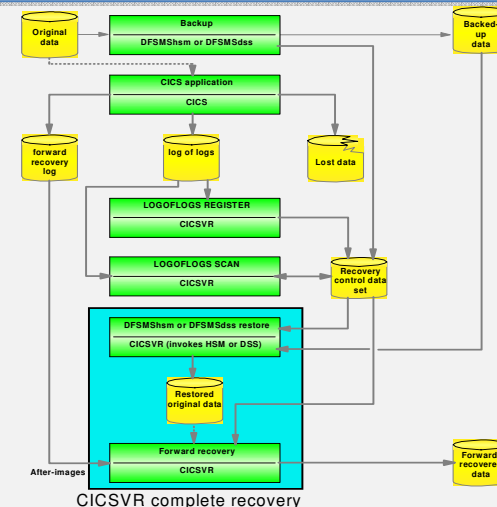
### *What's new in CICS VR V5.1...*

- Replication logging in support of the GDPS-Active-Active availability solution
- Batch logging enhancements
- Batch backout improvements
- Migration utility enhancements
- Logstream printing and other usability enhancements

### *CICS VR enables you to...*

- Supports backups created by Backup-While-Open (BWO)
- Automate recovery
- Test forward recovery and backout
- Produce disaster recovery reports

CICS TS  
and  
CICSVR





# CICS VSAM Transparency for z/OS V2.1



## *Modernize your CICS and batch VSAM data*

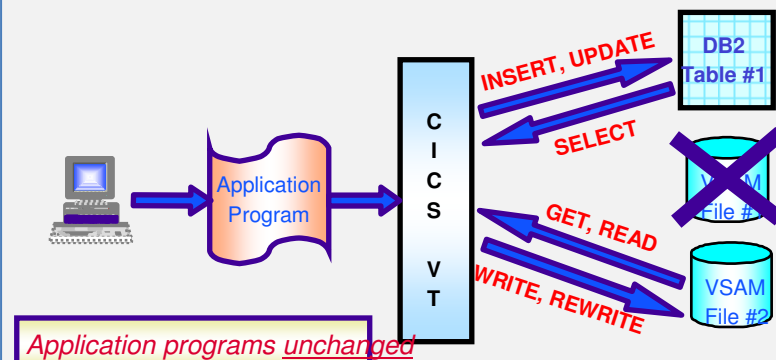
### *What's new in CICS VT V2.1...*

- Auto-generate customized data migration JCL
- Enhanced IDCAMS REPRO support
- New migration tracking report
- Improved diagnostic facilities
- Support for CICS® Transaction Server V5.1 and DB2® 10
- Other functional enhancements
  - Long column name support
  - HLL support for user exits
  - RRS support in batch
  - Read-only DDM
  - Dynamic DST update
- New plug-in for CICS Explorer

### *CICS VT enables you to...*

- Migrate VSAM files to DB2 without changing application programs
- Maintain single copy of the data
- CICS and batch programs access data in DB2 under the control of CICS VT
- Access migrated DB2 data natively using SQL

### **After CICS VT**





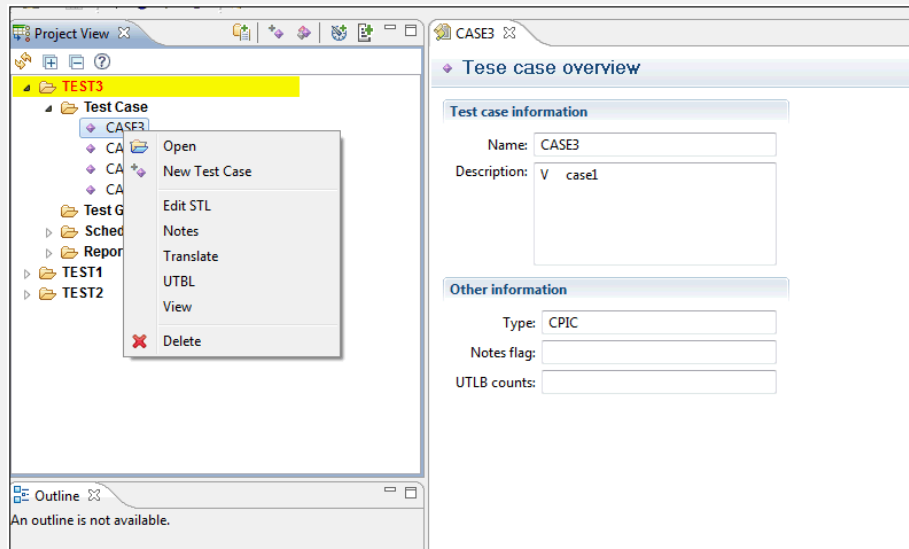
## IBM Workload Simulator for z/OS (WSIM)



### *Regression and load test interactive z/OS applications*

#### *What's new in WSIM V12.1...*

- Integrated plug-in for CICS Explorer, RDz, and IMS Enterprise Explorer



#### *WSIM enables you to...*

- Drive 3270 performance test workload on System z
- Broad protocol support
- SNA, CPI-C (LU 6.2), and enhanced TCP/IP support, Telnet 3270, 3270E, and 5250 clients, Telnet line mode network virtual terminal clients, Simple TCP and UDP clients, File transfer protocol (FTP) clients
- Multiple client applications that run on top of TCP/IP
- SNA LU simulation
- Test manager (WTM) guides the user through the test process.
- Extensive run-time, script-generating, and post-test utilities
- ISPF Interface
- Plug-in support for CICS Explorer, RDz, and IMS Enterprise Explorer



# CICS and PD Tools Solutions

## by Key Business Requirement

Solutions \ Requirement	Requirement			
	Business Flexibility	IT Service Management	Governance & Compliance	Reduced TCO
CICS Deployment Assistant	√	√	√	√
CICS Interdependency Analyzer	√	√	√	√
CICS Transaction Gateway	√			√
CICS VSAM Transparency	√	√	√	√
CICS Configuration Manager	√	√	√	√
CICS Performance Analyzer	√	√	√	√
CICS VSAM Recovery		√	√	√
CICS Batch Application Control		√		√
IBM Session Manager		√	√	√
CICS Online Transmission Time Optimizer		√		√
Application Performance Analyzer for z/OS	√			√
Fault Analyzer for z/OS	√	√		√
Debug Tool for z/OS	√			√
File Manager for z/OS	√	√	√	√
Workload Simulator for z/OS	√	√	√	√



## CICS TS V5.1 Evaluations. No Cost. No Fuss.

### *CICS Transaction Server for z/OS V5.1 Developer Trial*

- **Try-before-you-buy** the latest production ready edition of CICS Transaction Server
- **Zero-cost license**, no single version charging (SVC) period, no reason to wait
- **Easy ordering via IBM ShopzSeries**, with internet or physical delivery options

*Get ready for the cloud  
with CICS TS V5.1*

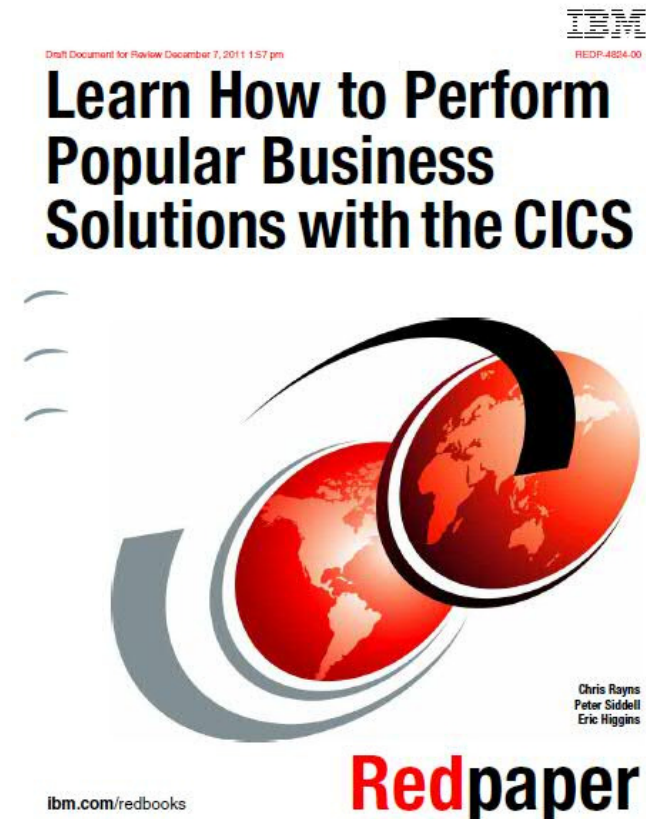
What's new with the Developer Trial?

- **Evaluate the value** of a CICS TS upgrade, before committing time and resources to a production migration project.
- **Explore all CICS TS V5.1 features** and benefits, in non-production environments only.
- **Decide to upgrade to CICS TS V5.1** - the latest production ready release of CICS TS that delivers major enhancements in five key areas



## GENAPP – SupportPac and Redpaper

- **GENAPP is available to customers as SupportPac CB12, at no extra cost**
  - Download from <http://www-01.ibm.com/support/docview.wss?rs=1085&uid=swg24031760>
- **There is a paper based on GENAPP with scenarios in this new IBM Redpaper**
  - Download from <http://www.redbooks.ibm.com/abstracts/redp4824.html?Open>





# Sources of Information

## ▪ Web

- CICS home page [ibm.com/cics](http://ibm.com/cics)
- CICS Tools home page [ibm.com/cics/tools/](http://ibm.com/cics/tools/)
- PD Tools site [ibm.com/software/awdtools/deployment/](http://ibm.com/software/awdtools/deployment/)
- CICS Tools trials [ibm.com/software/os/zseries/trials/cicstools/](http://ibm.com/software/os/zseries/trials/cicstools/)
- CICS Explorer home page [ibm.com/cics/explorer](http://ibm.com/cics/explorer)
- CICS Explorer download page <http://ibm.com/cics/explorer/download>

## ▪ Demos and animations

- CICS Explorer animation - <http://www.youtube.com/watch?v=-NzWwUi5ILw>
- CICS Explorer flash demo - featuring Threadsafe Analysis using the CICS PA, CICS IA, and CICS CM perspectives - <http://www.youtube.com/watch?v=Jk3Ydvl8lno>

## ▪ Other

- CICS Transaction Server in your SOA - Great source of links to more CICS ecosystem information - [ftp://ftp.software.ibm.com/software/http/cics/presentations/CICS\\_TS\\_in\\_your\\_SOA - Links - Issue 3.ppt](ftp://ftp.software.ibm.com/software/http/cics/presentations/CICS_TS_in_your_SOA_-_Links_-_Issue_3.ppt)



## Google CICS or check us out at:

 [ibm/developerworks/cicsdev](http://ibm/developerworks/cicsdev)

 [facebook.com/IBMCICS](https://facebook.com/IBMCICS)

 [twitter.com/IBM\\_CICS](https://twitter.com/IBM_CICS)

You  [youtube.com/cicsfluff](https://youtube.com/cicsfluff)

You  [youtube.com/cicsexplorer](https://youtube.com/cicsexplorer)

 [twitter.com/IBM\\_System\\_z](https://twitter.com/IBM_System_z)

 [CICS Explorer Forum](http://CICS Explorer Forum)  
[ibm.com/developerworks/forums/forum.jspa?forumID=1475&start=0](http://ibm.com/developerworks/forums/forum.jspa?forumID=1475&start=0)



[CICS-L list Forum](http://CICS-L list Forum)  
[listserv.uga.edu/archives/cics-l.html](http://listserv.uga.edu/archives/cics-l.html)

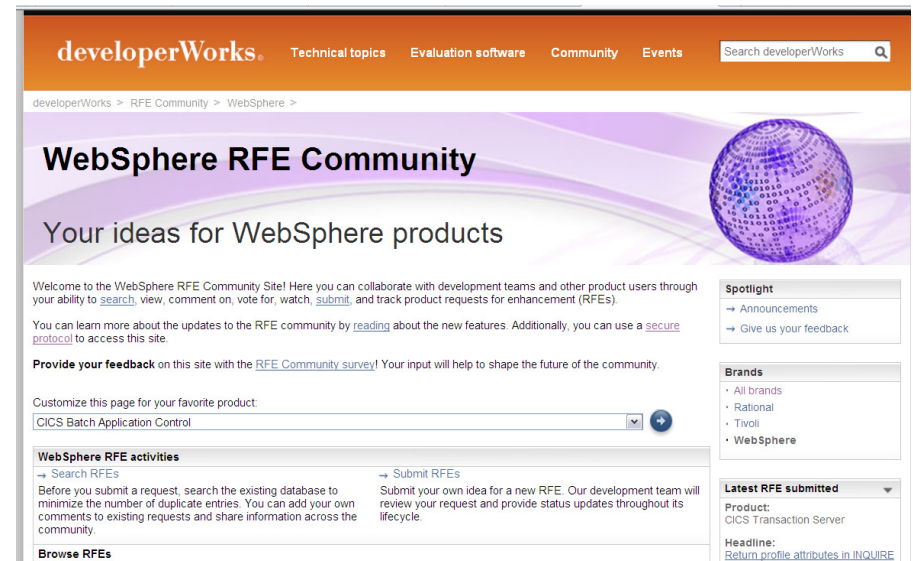




# Raising new requirements with RFE

- You can now raise and track requirements using the new IBM RFE system for

- CICS Transaction Server
- CICS Explorer
- TXSeries
- WXTR
- IBM CICS Tools
- CICS Transaction Gateway
- PD Tools



- Existing FITS requirements are currently being processed, and will either be transferred to RFE or closed and returned.
- All brands <https://www.ibm.com/developerworks/rfe/> - select Brand: WebSphere
- WebSphere only [https://www.ibm.com/developerworks/rfe/?BRAND\\_ID=181](https://www.ibm.com/developerworks/rfe/?BRAND_ID=181)
- Select Product Family: Transaction Processing - for CICS Transaction Server, TXSeries, and WXTR
- Select Product Family: Enterprise Tooling - for the CICS Tools, CICS Transaction Gateway, and PD Tools
- Raise CICS Explorer base requirements against the Explorer component of CICS TS.
- Raise plug-in requirements against the Explorer component of related product.



## **Session 13157**

**Lunch and Learn: Live demo! New IBM CICS Tools and IBM Problem Determination Tools Efficiently Support the z/OS Ecosystem**

# **Select Demonstration Screen Shots**



## CICS Explorer Introduction

- **The following slides show basics for installing and customizing the CICS Explorer with the available tooling plug-ins**

IBM CICS Explorer downloads - United States - Mozilla Firefox: IBM Edition

File Edit View History Bookmarks Tools Help

IBM CICS Explorer downloads - United St...

+

www-01.ibm.com/support/docview.wss?rs=1083&uid=swg24033579

☆

↺

↻

Google

🔍

🏠

← IBM Support Portal

Support & downloads

Bookmark this page

View my bookmarks

Feedback

Tags

Add a tag | Search all tags

Add a tag

My tags | All tags

View as cloud | list

# CICS Explorer downloads

Downloadable files

Abstract

This page will point you at the IBM CICS Explorer that's right for you

Download Description

SCENARIO 1 - Upgrade to CICS Explorer V5.1

You want to upgrade to CICS Explorer V5

1. Back-up your existing CICS Explorer workspace<sup>1</sup>

Either download and install CICS Explorer V5.1 for Microsoft Windows

Or download and install CICS Explorer V5.1 for Linux

You want to upgrade to CICS Explorer V5 SDK

1. In your Eclipse IDE<sup>2</sup> add URL <http://public.dhe.ibm.com/software/htp/cics/updates/portfolio/5.1/5.1.0/> to Window > Preferences > Install/Update > Available Software Sites

2. Update your installation using Help > Check for updates

SCENARIO 2 - New CICS Explorer user

You're a new user and want to use CICS Explorer for the first time<sup>3</sup>

Either Download and install CICS Explorer V5.1 for Microsoft Windows

Or download and install CICS Explorer V5.1 for Linux

SCENARIO 3 - CICS Explorer with Eclipse

You want to use your existing Eclipse environment with CICS Explorer

Rate this page:

★★★★★

Average rating 0 users

Add comments

Document information

CICS Transaction Server

Explorer

Software version: 3.1, 3.2, 4.1, 4.2, 5.1

Operating system(s): Linux, Windows

Reference #: 4033579

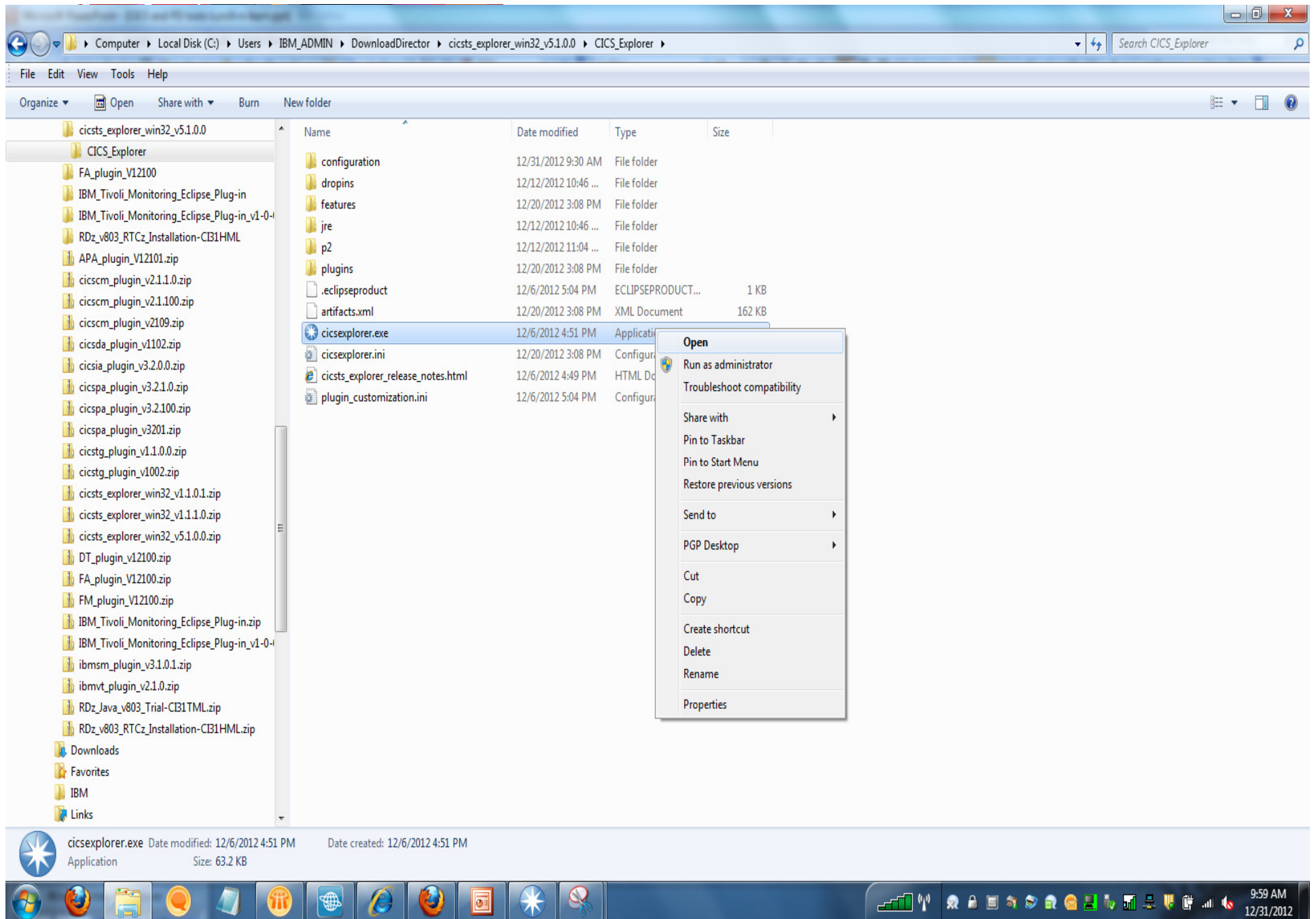
Modified date: 2012-12-13

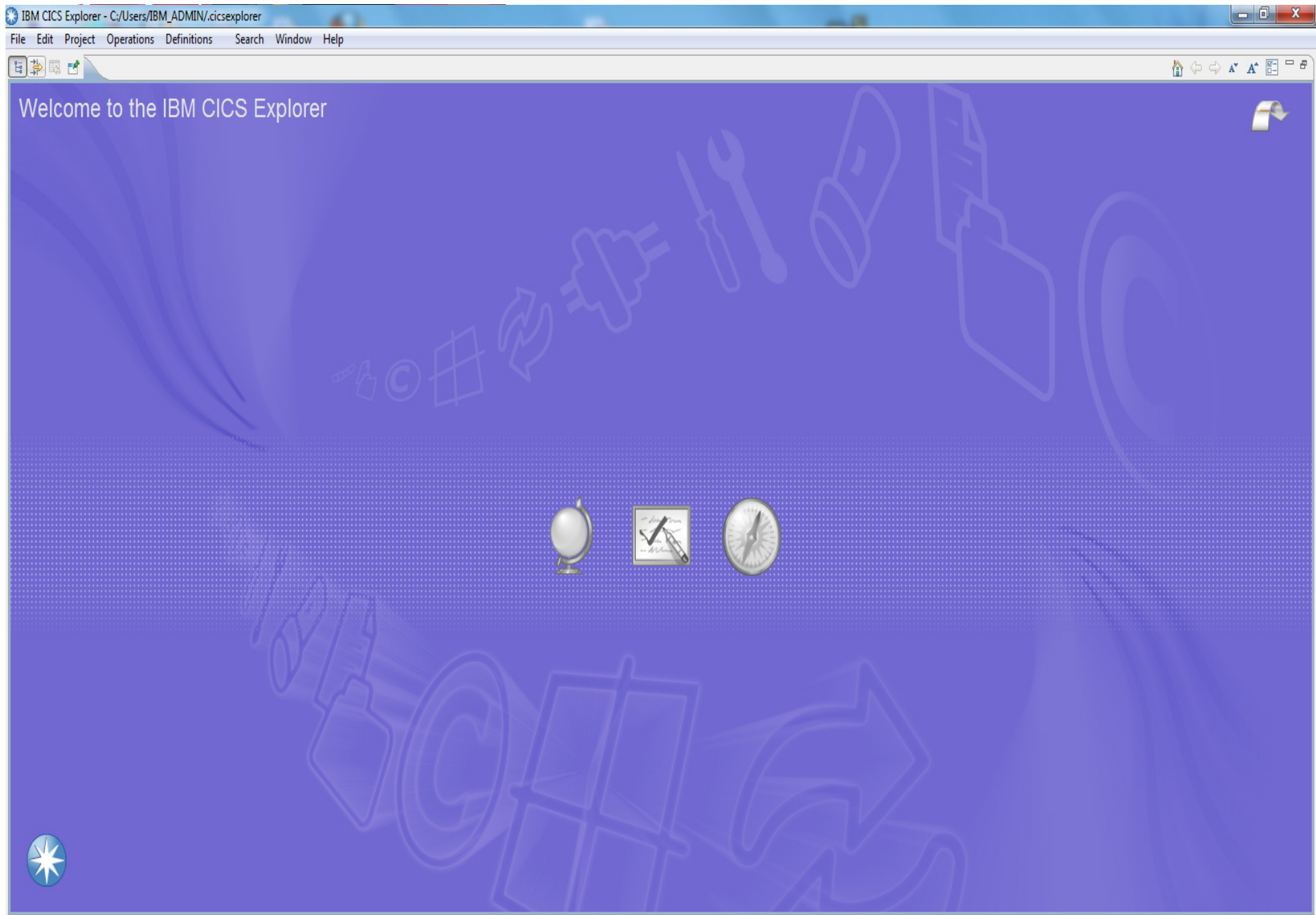
Translate my page

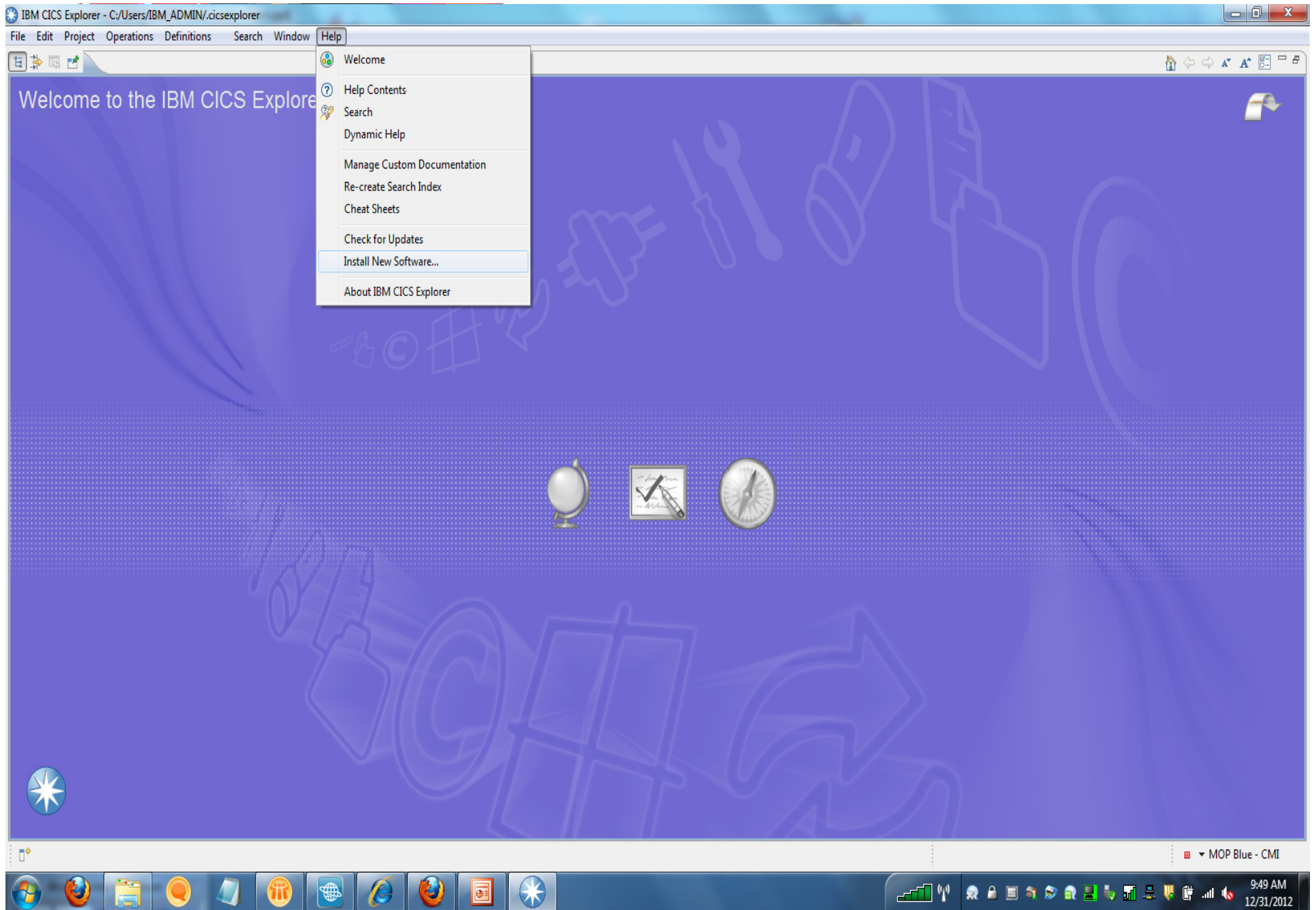
Select Language

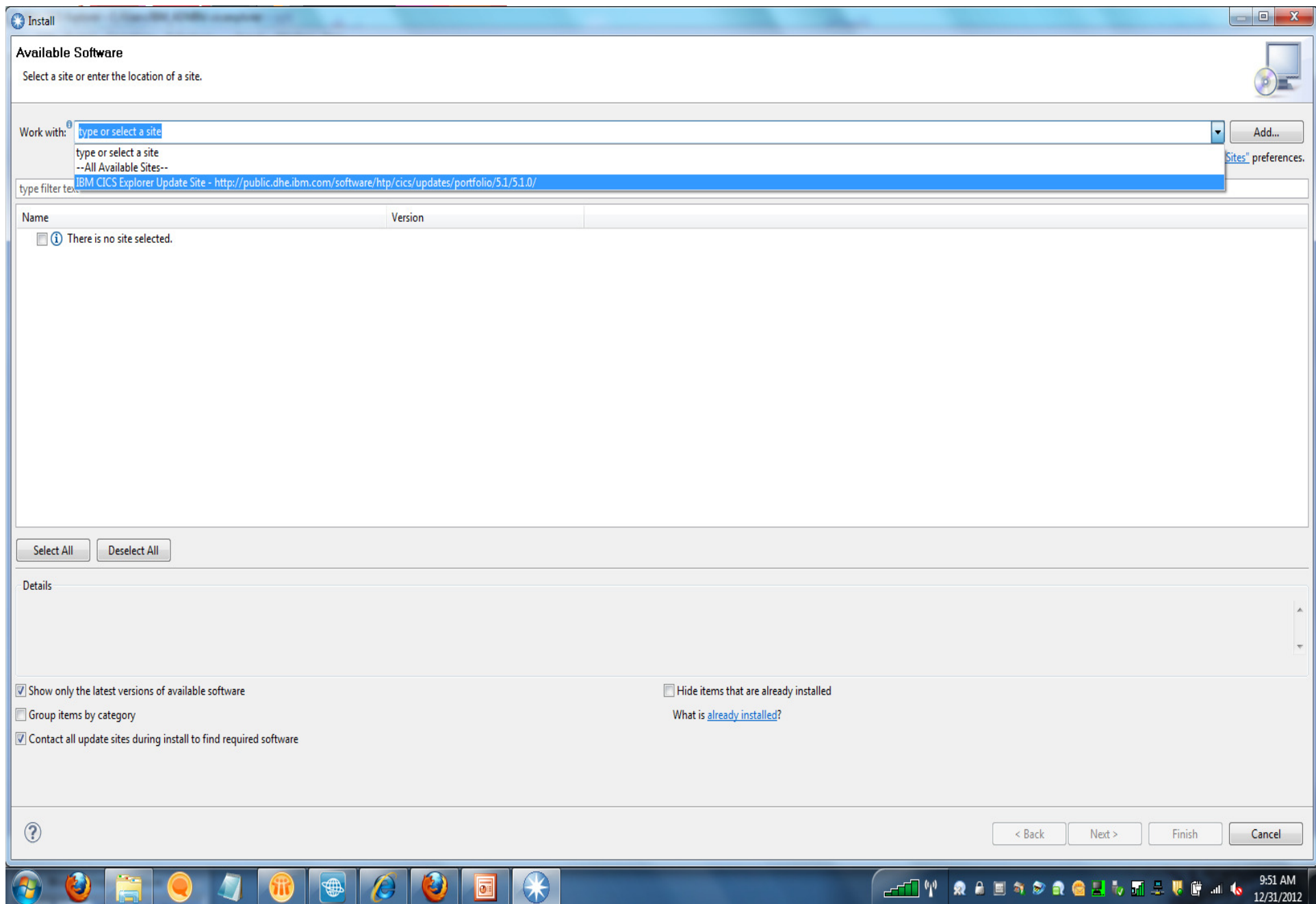
27

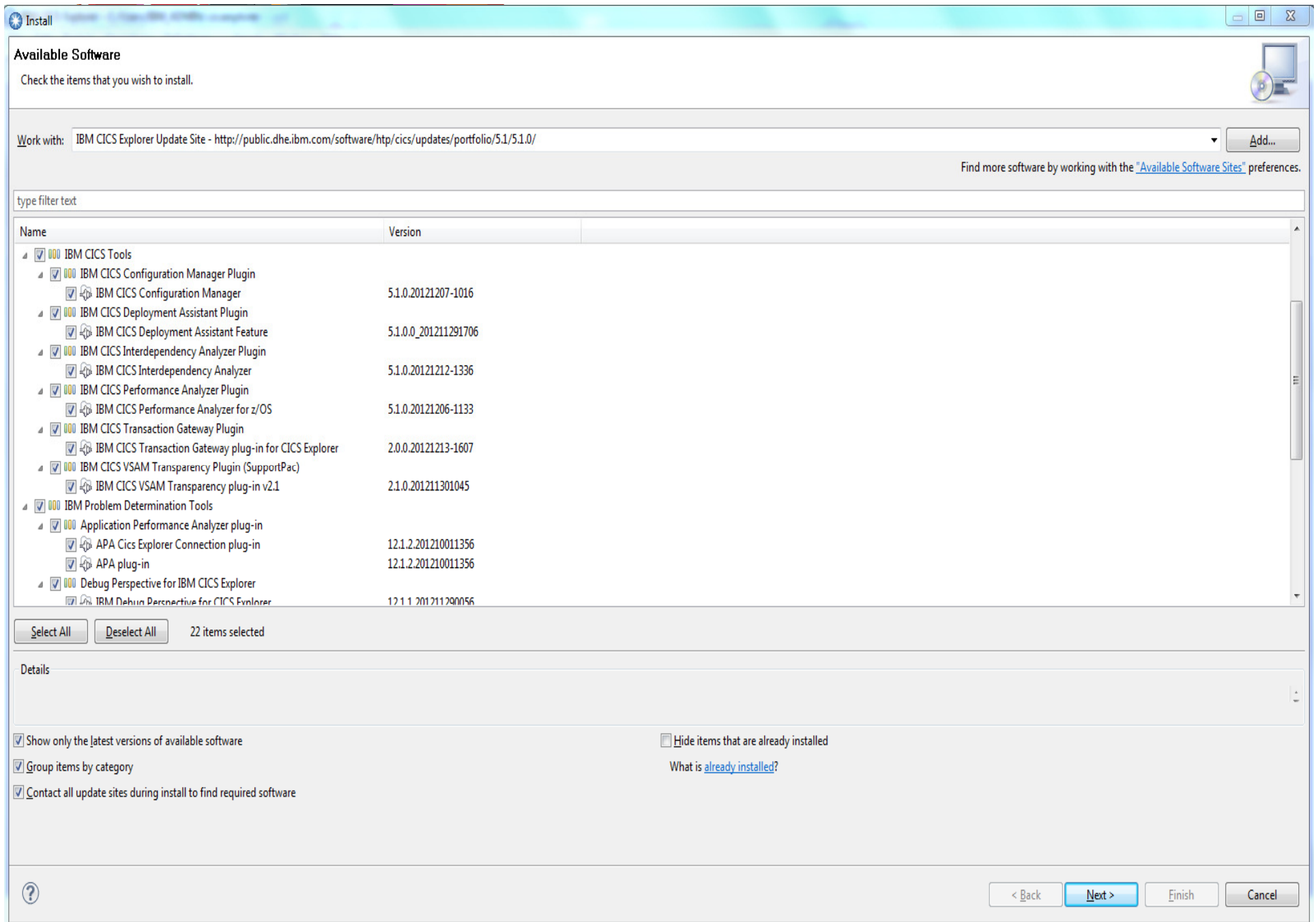
© 2013 IBM Corporation

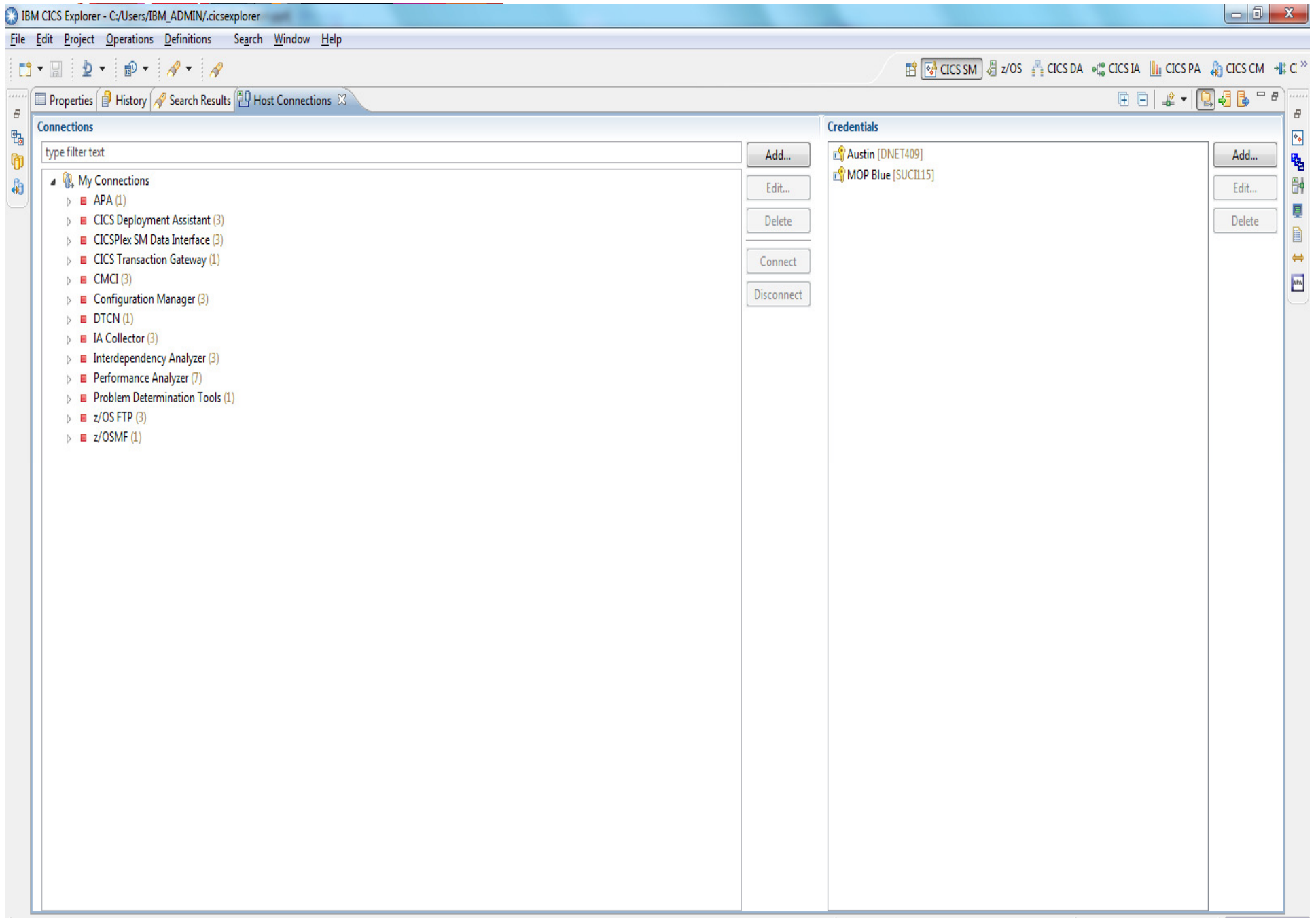


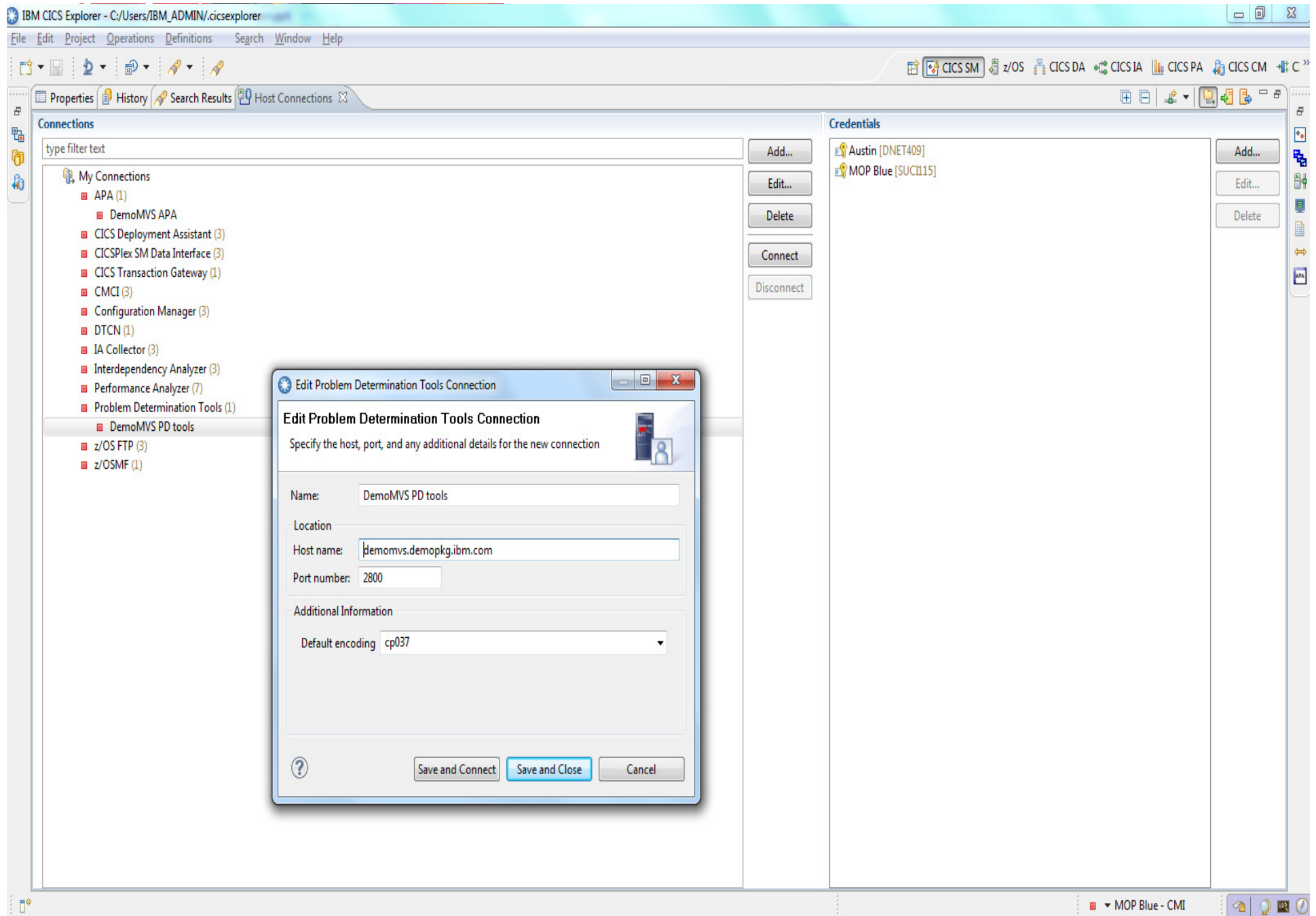


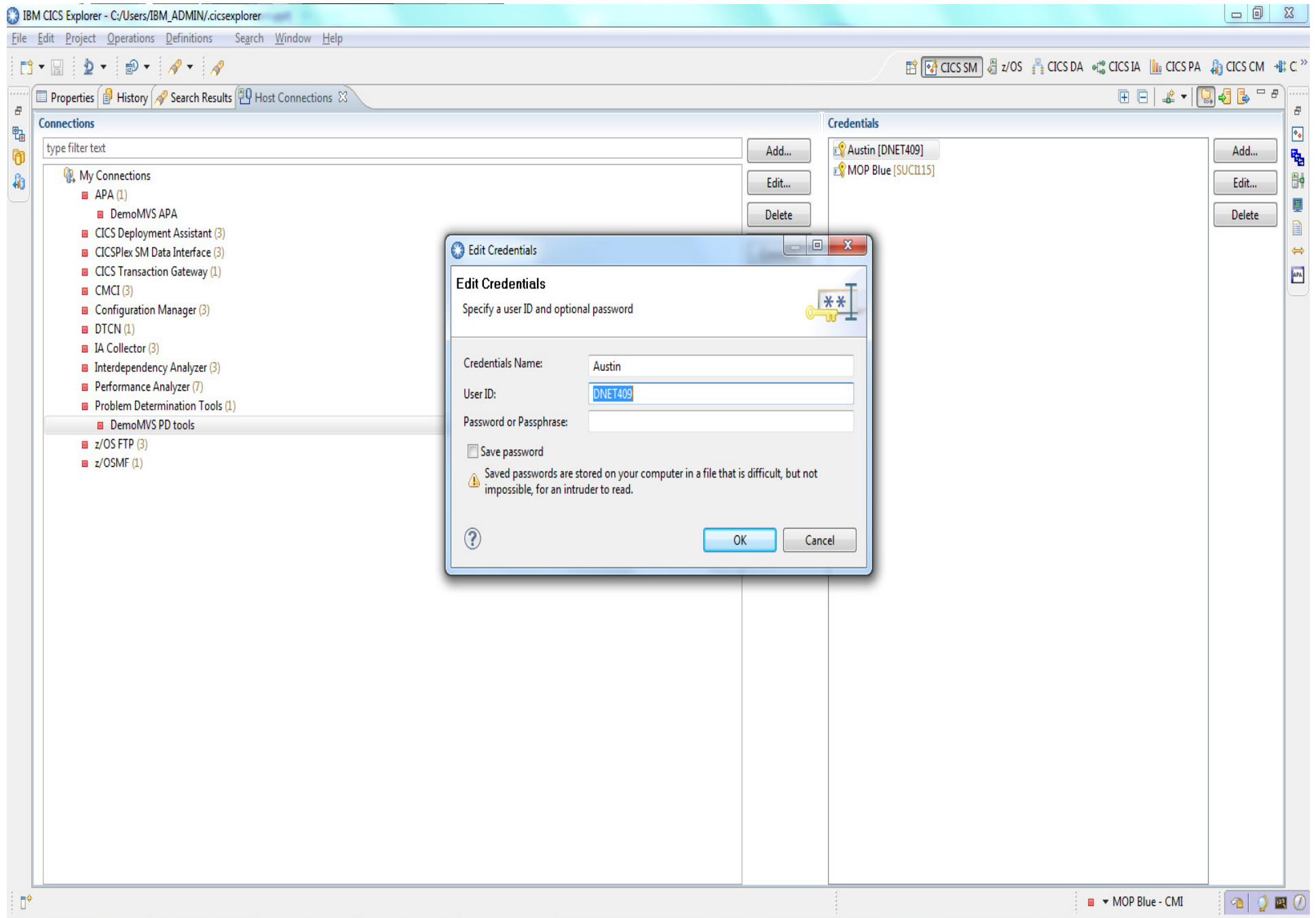












IBM CICS Explorer - C:/Users/IBM\_ADMIN/cicsexplorer

File Edit Project Operations Definitions Search Window Help

CICSplex Explor CICSplex Repos Configurations Regions Tasks ISC/MRO Connections Terminals Files Transactions STC Properties

Server: CPSM

CICSPLX1 (10/12)

- WLMARY CPSM (ACTIVE)
- CICBRAC
- CICSAORB
- CICSAOR1 (CICSACB1)
- CICSAOR2 (CICSACB2)
- CICSAOR3 (CICSACB3)
- CICSAOR4 (CICSACB4)
- CICSAOR5 (CICSACB5)
- CICSAOR6 (CICSACB6)
- CICSAOR7 (CICSACB7)
- CICSAOR8 (CICSACB8)
- CICSCM (CICSCM)
- CICSWUI (CPSMWUI)
- AORBRAC (AOR Group CAC BR teste)
- AORGRP1 (AOR Group 1)
- AORGRP2 (AOR Group 2)
- AORGRP3 (AOR Group 3)
- CICGRP01 (System Group for CICSAOR1)
- CICGRP02 (System group for CICSAOR2)
- CICGRP03 (System group for CICSAOR3)
- CICGRP04 (System group for CICSAOR4)
- CICGRP05 (System group for CICSAOR5)
- EVNREGNS (Even Numbered Regions)
- GRP0102 (Grupo aor 1 e 2)
- GRP0103
- GRP0104 (AOR2 + AOR3)
- LKGRP (LK Group)
- ODDREGNS (Odd Numbered AOR Regions)
- SGSERASA (SYSTEM GROUP SERASA)
- TESTREFR (AOR Group teste REFRESH)
- WILLGRP (WILLIAM CREATE A CICS GROUP)
- WLMAORGP (WLM Demo AOR Group - Target Regions)

CNX02111 Context: CICSPLX1. Resource: LOCFLE. 9 records collected at Dec 31, 2012 10:05:44 AM

Region	Name	Status	Open Status	Add	Browse	Delete	Read	Update	LSR Pool ID	DS Name
CICSAOR1	CUSTDATA	✓ ENABLED	CLOSED	ADDABLE	BROWSABLE	DELETABLE	READABLE	UPDATABLE	1	COMPTON.CIC...
CICSAOR1	CUSTFILE	✓ ENABLED	CLOSED	ADDABLE	NOTBROWSABLE	NOTDELETABLE	READABLE	UPDATABLE	1	FILEMGR.REDB...
CICSAOR2	CUSTDATA	✓ ENABLED	CLOSED	ADDABLE	BROWSABLE	DELETABLE	READABLE	UPDATABLE	1	SOADEMO.VSA...
CICSAOR3	CUSTFILE	✓ ENABLED	CLOSED	ADDABLE	BROWSABLE	DELETABLE	READABLE	UPDATABLE	1	CICSTS.V2R1.CI...
CICSAOR4	CUSTFILE								1	FILEMGR.REDB...
CICSAOR5	CUSTFILE								1	FILEMGR.REDB...
CICSAOR6	CUSTFILE								1	FILEMGR.REDB...
CICSAOR6	CUSTOMER								1	CICSTS.CICSAO...
CICSAOR7	CUSTFILE								5	FILEMGR.REDB...

Open Perspective

- <CICS DA>
- APA
- CICS CM
- CICS Cloud
- CICS DA
- CICS IA
- CICS PA
- CICS SM (default)
- CICS Transaction Gateway
- CVS Repository Exploring
- Debug
- Fault Analyzer
- File Manager
- IBM Session Manager Administration
- IBM Session Manager Operations
- Resource
- SM Administration
- Team Synchronizing
- WSim Explorer
- z/OS

OK Cancel

Connections

type filter text

- CICS Transaction Gateway
- CMCI (3)
- Configuration Manager
- DTCN (1)
- IA Collector (3)
- Interdependency Analyzer
- Performance Analyzer (7)
- Problem Determination Tools (1)
- DemoMVS PD tools
- z/OS FTP (3)

Credentials

Add... Edit... Delete Connect Disconnect

Austin [DNET409]

MOP Blue [SUC1115]

DemoMVS CMI

10:06 AM 12/31/2012



## Use CICS and PD tools to Diagnose a real issue

- The following slides show how CICS and problem determination tooling work together to resolve a real world issue

File Edit Search Project Window Help

DA Projects

DEMOMVS - DA DemoMVS - DA [demomvs.demopkg.ibm.com]

- CICS Coupling Facility Data Table Servers (1)
- CICS Named Counter Servers (1)
- CICSplexes (4)
- CICSplex SM Web User Interface Servers (2)
- CICS Regions - Managed by CICSplex SM (20)
  - CICDA01.region [CICSDAX1]
  - CICDA02.region [CICSDAX1]
  - CICDA03.region [CICSDAX1]
  - CICDA04.region [CICSDAX1]
  - CICDA05.region [CICSDAX1]
  - CICDA06.region [CICSDAX1]
  - CICSACB1.region [CICSPLX1]
  - CICSACB2.region [CICSPLX1]
  - CICSACB3.region [CICSPLX1]
  - CICSACB4.region [CICSPLX1]
  - CICSACB5.region [CICSPLX1]
  - CICSACB6.region [CICSPLX1]
  - CICSACB7.region [CICSPLX1]
  - CICSACB8.region [CICSPLX1]
  - CICSCM.region [CICSPLX1]
  - CICSPA01.region [DEMOPLX1]
  - CICSPA02.region [DEMOPLX1]
  - CICSPF01.region [DEMOPLX1]
  - CICSPT01.region [DEMOPLX1]
  - CICWKS96.region [DEMOPLX1]

CICSACB6: Region CICSACB1: Region

### Managed CICS Region

**Details**

Applid: CICSACB1 Job: CICSOR1  
 Program: DFHSIP Version: 670  
 User: SYSSTC [MVS Image](#): DEMOMVS  
[DB2](#): [MQ](#): WMQAMSTR  
 IMS:

**Start Policy**

☒ Batch Job  
[Data set name](#):  [Browse...](#)  
☐ Started Task  
 Start Command:

[Start Region](#) [Stop Region](#)

**CICSplex SM**

[CICSplex](#): CICSPLX1  
[CMAS](#): CPMCM1  
 MAS: CICSOR1  
 To Clone the CICS region use the:  
[Clone CICS Region Wizard](#)

**CICS connectivity**

Applid	MAS
CICSACB2	CICSOR2

[Open](#)

**Groups**

- GRP0102
- GRP0103
- ODDREGNS
- SGSERASA

Jobs

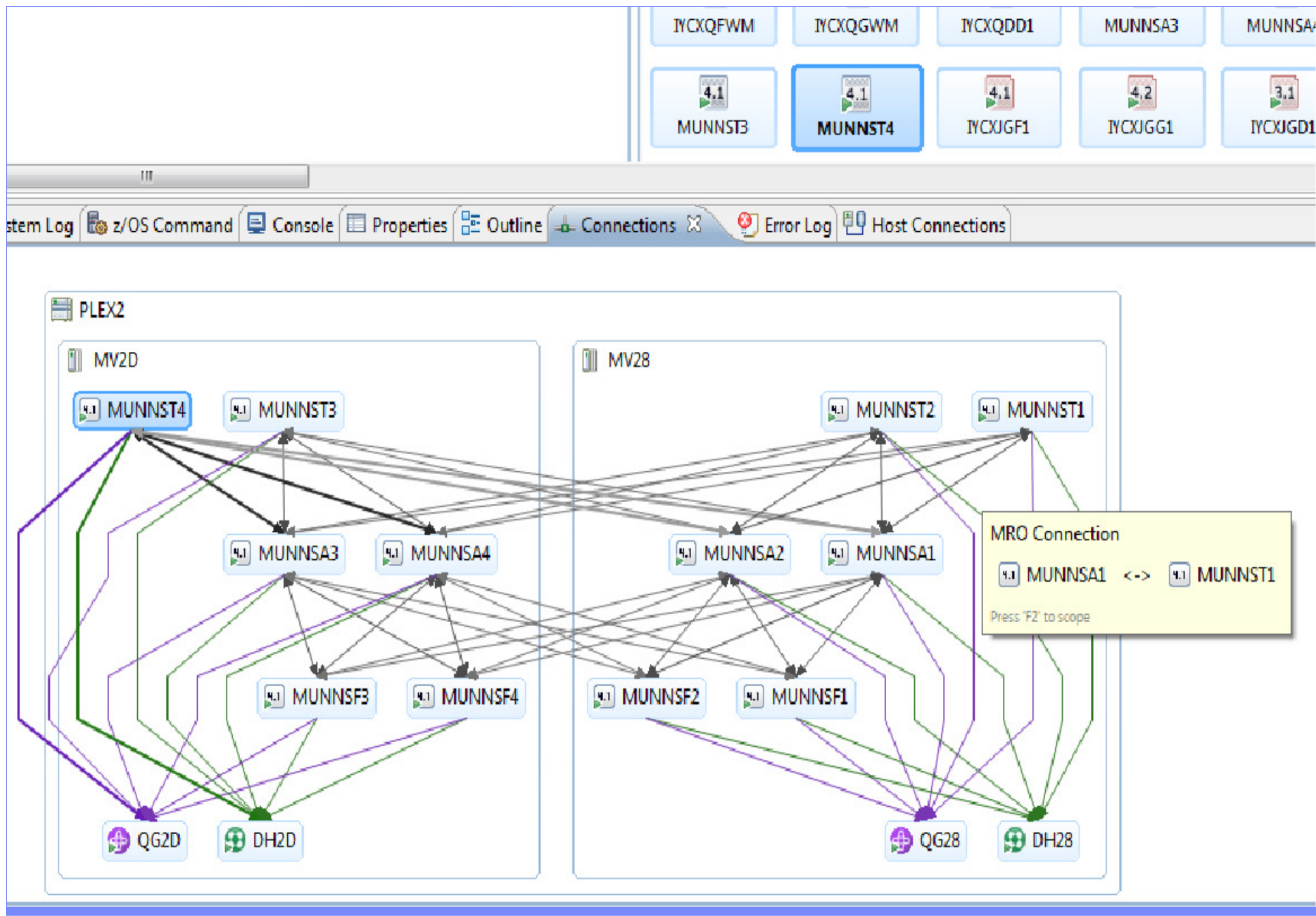
Job Name: CICSOR1 User: \* (1)

CICSOR1 - STC04861 (SYSSTC)

CICS Region

z/OS Job System Log z/OS Command Console Properties

Job ID: STC06969



IBM CICS Explorer - C:/Users/IBM\_ADMIN/cicsexplorer

File Edit Project Operations Definitions Search Window Help

CICS SM z/OS CICS DA CICS IA CICS PA CICS CM CICS Transac... IBM Session ... IBM Session ... APA File Manager Fault Analyzer Debug

CICSplex Explor CICSplex Repos Configurations Regions Tasks ISC/MRO Connections Terminals Files Transactions STC Properties Atom Services Programs

Server: CPSM Transaction ID: SSP1 Task ID:

CICSDAX1 (6/6)

CICSPLX1 (10/12)

- WLMARY CPSM (ACTIVE)
  - CICBRAC
  - CICSAORB
  - CICSAOR1 (CICSACB1)
  - CICSAOR2 (CICSACB2)
  - CICSAOR3 (CICSACB3)
  - CICSAOR4 (CICSACB4)
  - CICSAOR5 (CICSACB5)
  - CICSAOR6 (CICSACB6)
  - CICSAOR7 (CICSACB7)
  - CICSAOR8 (CICSACB8)
  - CICSCM (CICSCM)
  - CICSWUI (CPSMWUI)
- AORBRAC (AOR Group CAC BR teste)
- AORGRP1 (AOR Group 1)
- AORGRP2 (AOR Group 2)
- AORGRP3 (AOR Group 3)
- CICGRP01 (System Group for CICSAOR1)
- CICGRP02 (System group for CICSAOR2)
- CICGRP03 (System group for CICSAOR3)
- CICGRP04 (System group for CICSAOR4)
- CICGRP05 (System group for CICSAOR5)
- EVNREGNS (Even Numbered Regions)
- GRP0102 (Grupo aor 1 e 2)
- GRP0103
- GRP0104 (AOR2 + AOR3)
- LKGRP (LK Group)
- ODDREGNS (Odd Numbered AOR Regions)
- SGSERASA (SYSTEM GROUP SERASA)
- TESTREFR (AOR Group teste REFRESH)
- WILLGRP (WILLIAM CREATE A CICS GROUP)
- WLMAORGP (WLM Demo AOR Group - Target Regions)

CNX0211I Context: CICSAOR6. Resource: TASK. 2 records collected at Dec 31, 2012 11:44:48 AM

Task ID	Transaction ID	Run Status	User ID	Principal Facility	LU Name	Priority	Class Name	Current Suspend Time
0001178	SSP1	SUSPENDED	DNET409	Z006	ISZ006	1	DFHTCL01	0:01:31
0001185	SSP1	SUSPENDED	DDS0173			1	DFHTCL01	0:00:57

Properties History Search Results Host Connections

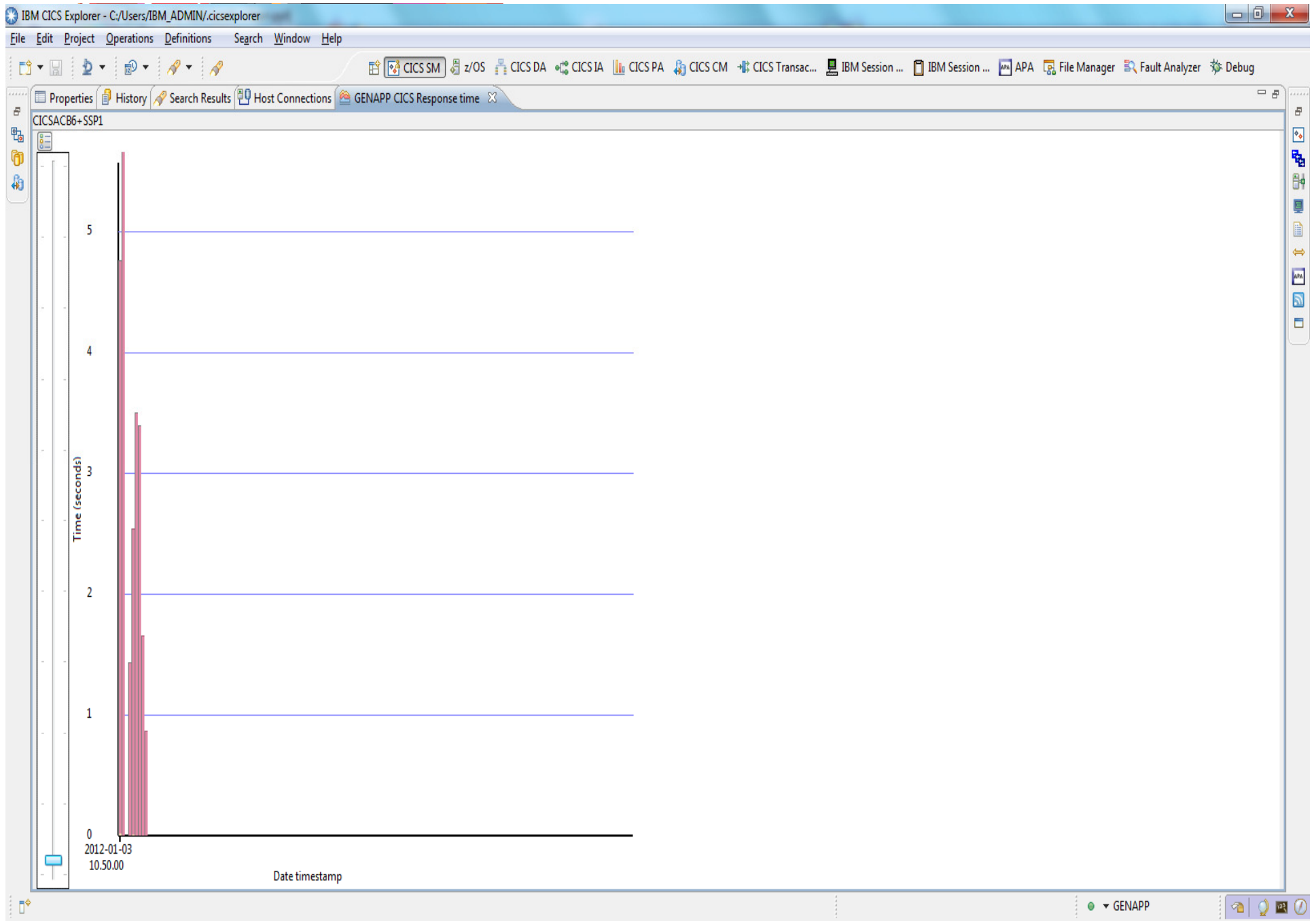
Property	Value
Basic	
Actvtime	
Ainsfail	CONTINUE
Autoinst	NEVER
Bastrace	00000000
Botrsupd	10
Chetrace	00000000
CMAS Name	CPSMCM1
Comtrace	00000000
Connection Sample I	0
Cpsmver	0420

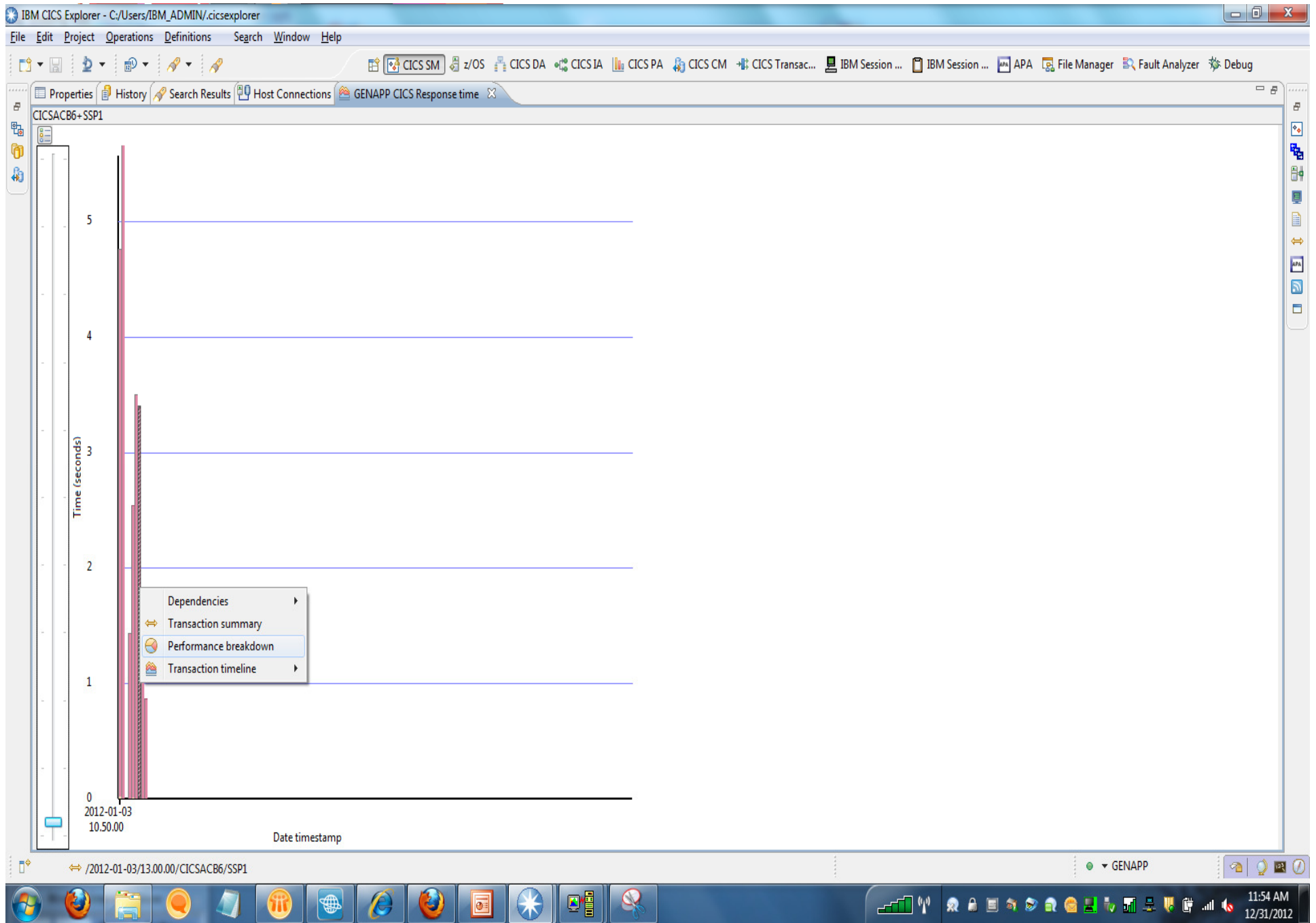
CICSF DemoMVS CMI

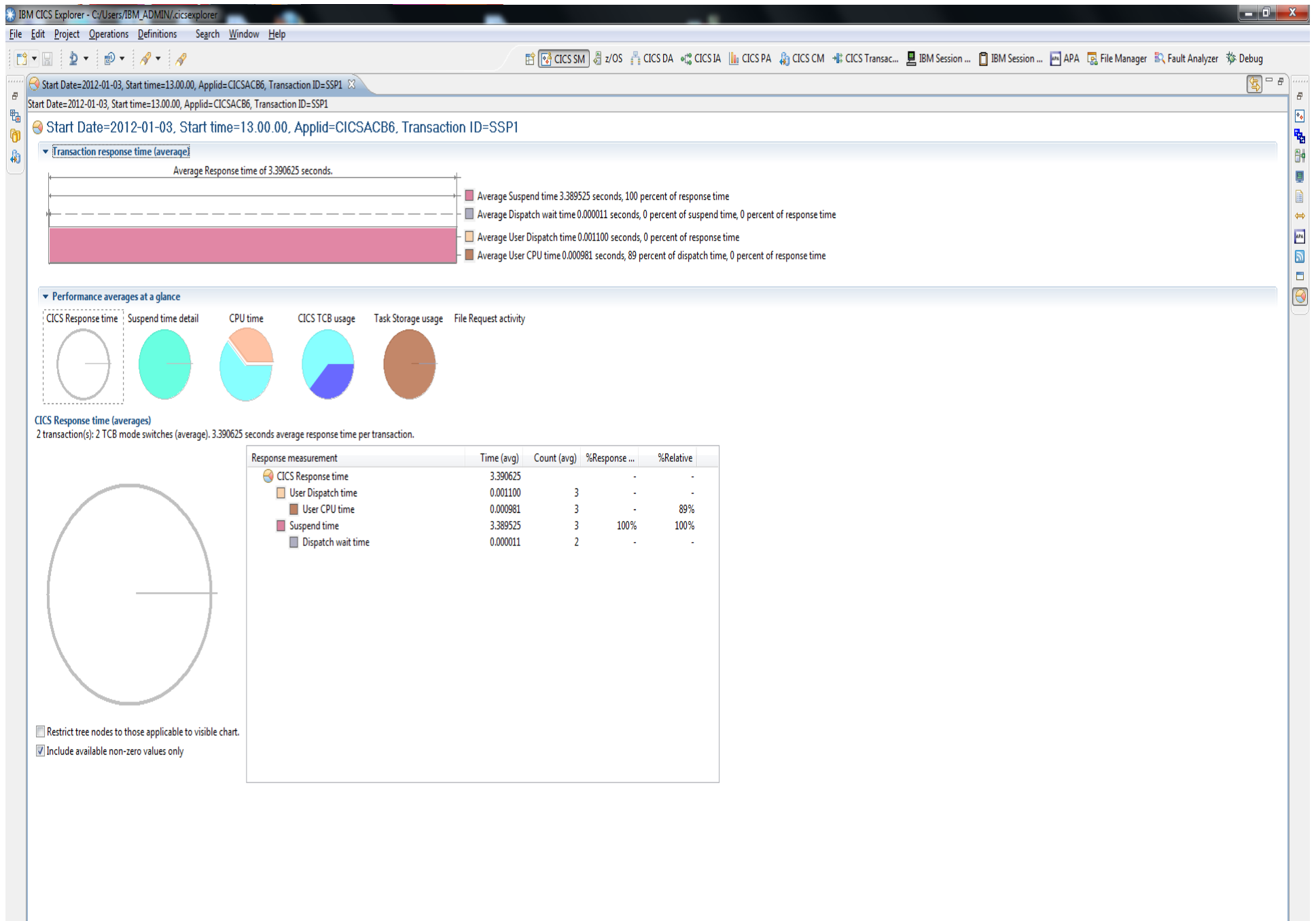


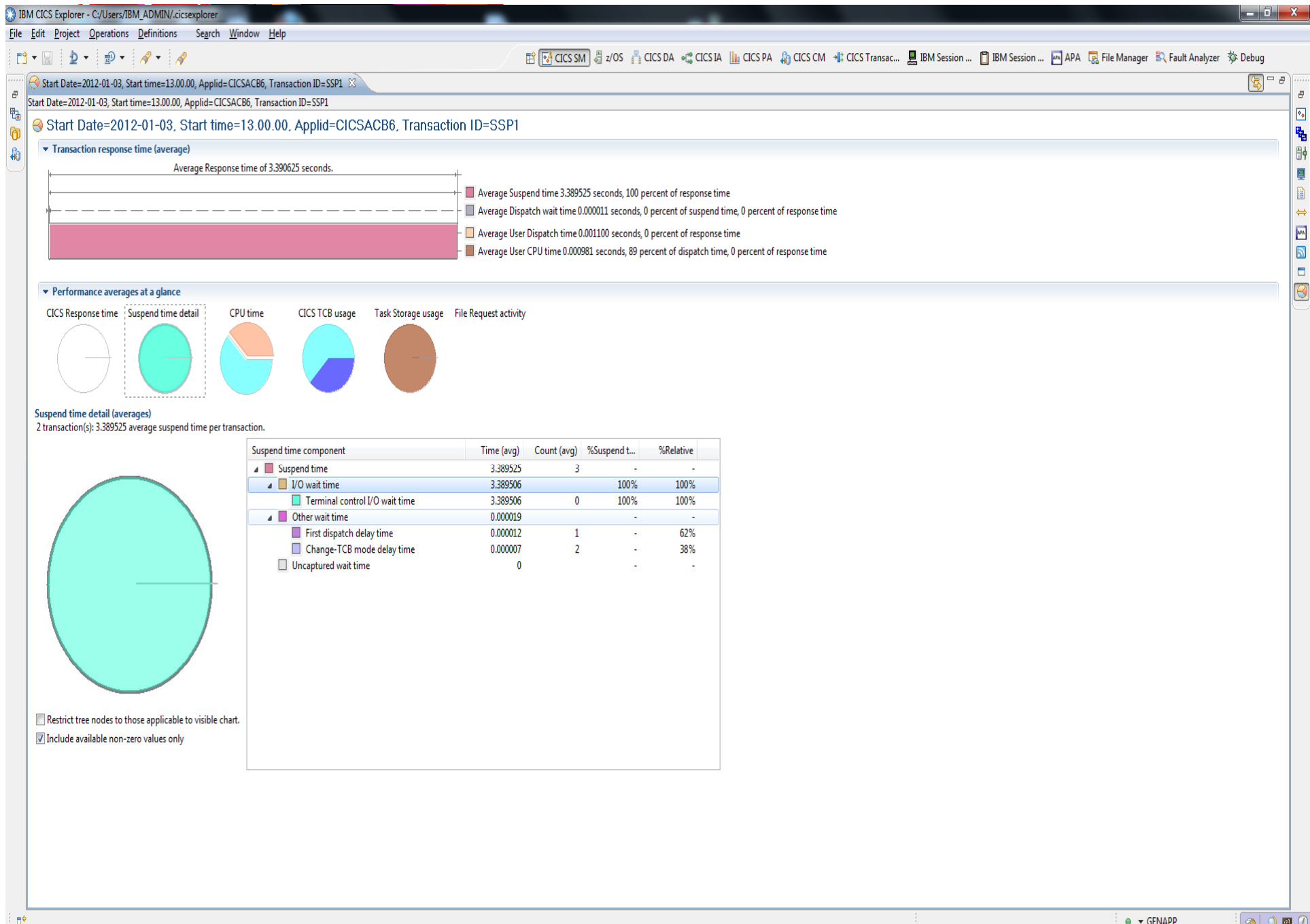












IBM CICS Explorer - C:\Users\IBM\_ADMIN\cicsexplorer

File Edit Project Search Window Help

CICS SM z/OS CICS DA CICS IA CICS PA CICS CM CICS Transac... IBM Session ... IBM Session ... APA File Manager Fault Analyzer Debug

Records Project Explorer

Transaction summary (160/160 rows) Transaction Classes (1/1 rows)

Detail for Transaction summary

Applid  X

CICSACB6  
IYDZEJ07

Transaction ID  X

CATA (CICSACB6 3)  
CATD (CICSACB6 4)  
CECI (CICSACB6 1)  
CEDA (CICSACB6 5)  
CEDF (CICSACB6 1)

Transaction summary tree

2012-01-03  
2011-12-26  
2011-11-16

Maximum active transactions in class reached Applid=CICSACB6, Version Release Modification=670, Interval Number=0, Type=REQ, MVS ID=MVSA, Transaction class=DFHTCL09 Specific date: 2012-01-03 15.06.25

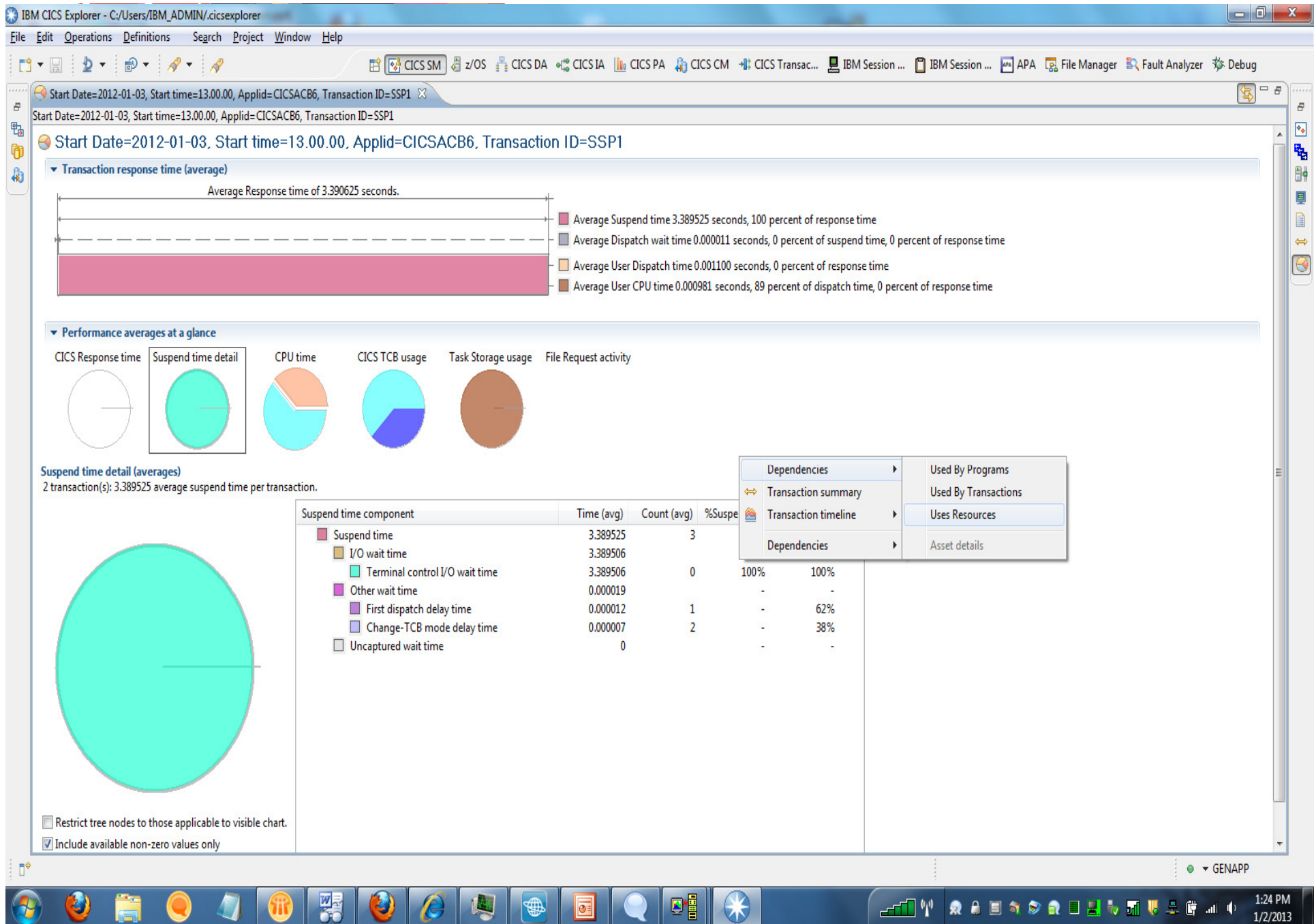
Start Date	Start time	Applid	MVS ID	Version R...	Type	Interval ...	Interval ...	Transacti...	Attaches	Purged i...	No longe...	Accepte...	Accepte...	Purged ...	Max active	Purge thr...	Transacti...
2012-01-03	15.06.25	CICSACB6	MVSA	670	REQ		0	DFHTCL09	67	0	3	64	3	0	1	0	1

Alerts

Alert description	Start D...	Start time	Applid	MVS ID	Resource name	Resource ...	Actual	Threshold	Type	Version R...	Interval ...	Interval ...
<b>Critical</b>												
Maximum active transactions in class reached	2012-01...	15.06.25	CICSACB6	MVSA	Tclass Name	DFHTCL09	64	>10	REQ	670	0	
Maximum active transactions in class reached	2012-01...	15.06.17	CICSACB6	MVSA	Tclass Name	DFHTCL09	64	>10	REQ	670	0	
DB2 pool thread waits	2011-11...	13.18.00	IYDZEJ07	MV2F	DB2CONN Name	DB2CONN1	150	>5	INT	670	798	00.01.00
Enqueues waited in ENQ pool - local	2011-11...	13.18.00	IYDZEJ07	MV2F	ENQ Pool ID	EXECADDR	50	>25	INT	670	798	00.01.00
Maximum active transactions in class reached	2011-11...	12.41.00	IYDZEJ07	MV2F	Tclass Name	DFHTCL09	15	>10	INT	670	761	00.01.00
Maximum active transactions in class reached	2011-11...	12.42.00	IYDZEJ07	MV2F	Tclass Name	DFHTCL09	21	>10	INT	670	762	00.01.00
DB2 pool thread waits	2011-11...	13.16.00	IYDZEJ07	MV2F	DB2CONN Name	DB2CONN1	148	>5	INT	670	796	00.01.00
Enqueues waited in ENQ pool - local	2011-11...	13.16.00	IYDZEJ07	MV2F	ENQ Pool ID	EXECADDR	37	>25	INT	670	796	00.01.00
DB2 pool thread waits	2011-11...	13.17.00	IYDZEJ07	MV2F	DB2CONN Name	DB2CONN1	75	>5	INT	670	797	00.01.00
<b>Warnings</b>												

1 items selected

GENAPP



IBM CICS Explorer - C:/Users/IBM\_ADMIN/cicsexplorer

File Edit Operations Definitions Search Project Window Help

CICS SM z/OS CICS DA CICS IA CICS PA CICS CM CICS Transac... IBM Session ... IBM Session ... APA File Manager Fault Analyzer Debug

Properties Error Log System Log z/OS Job History Search Results Host Connections GENAPP CICS Response time Uses

Transaction(SSP1) in Region CICSACB6 (21)

Resources used

- Program (8)
  - LGAPDB01 (1)
  - LGAPOL01 (1)
  - LGAPVS01 (1)
  - LGIPDB01 (1)
  - LGIPOL01 (1)
  - LGTESTP1 (1)
  - LGUPDB01 (1)
  - LGUPOL01 (1)
- Transaction (1)
- MAPSET (1)
- CONDITION (1)
- Map (1)
- AID (1)
- TEXT (1)
- (1)
- Table (2)
  - MOTOR (2)
    - INSERT
    - UPDATE
  - POLICY (3)
    - INSERT
    - SELECT
    - UPDATE
- CONTAINER (1)
  - ICOM-Data (1)
    - GET
- CHANNEL (1)
- Cursor (1)
- File (1)
  - KSDSPOLY (1)
    - WRITE

By Resource

- LGAPDB01

Programs using INSERT - POLICY

- CICSACB6
  - SSP1
    - LGTESTP1

▼ CICS IA V3.2 - Demo

IBM CICS Explorer - C:/Users/IBM\_ADMIN/cicsexplorer

File Edit Operations Definitions Search Project Window Help

CICS SM z/OS CICS DA CICS IA CICS PA CICS CM CICS Transac... IBM Session ... IBM Session ... APA File Manager Fault Analyzer Debug

Properties Error Log System Log z/OS Job History Search Results Host Connections GENAPP CICS Response time Uses

Transaction(SSP1) in Region CICSACB6 (21) Programs using SSP1

Resources used

- Program (8)
  - LGAPDB01 (1)
  - LGAPOL01 (1)
  - LGAPVS01 (1)
  - LGIPDB01 (1)
  - LGIPOL01 (1)
  - LGTESTP1 (1)
  - LGUPDB01 (1)
  - LGUPOL01 (1)
- Transaction (1)
  - SSP1 (1)
- MAPSET (1)
- CONDITION (1)
- Map (1)
- AID (1)
- TEXT (1)
- (1)
- Table (2)
  - MOTOR (2)
    - INSERT
    - UPDATE
  - POLICY (3)
    - INSERT
    - SELECT
    - UPDATE
- CONTAINER (1)
  - ICOM-Data (1)
    - GET
- CHANNEL (1)
- Cursor (1)
- File (1)
  - KSDSPOLY (1)
    - WRITE

By Resource

LGTESTP1

CICSACB6

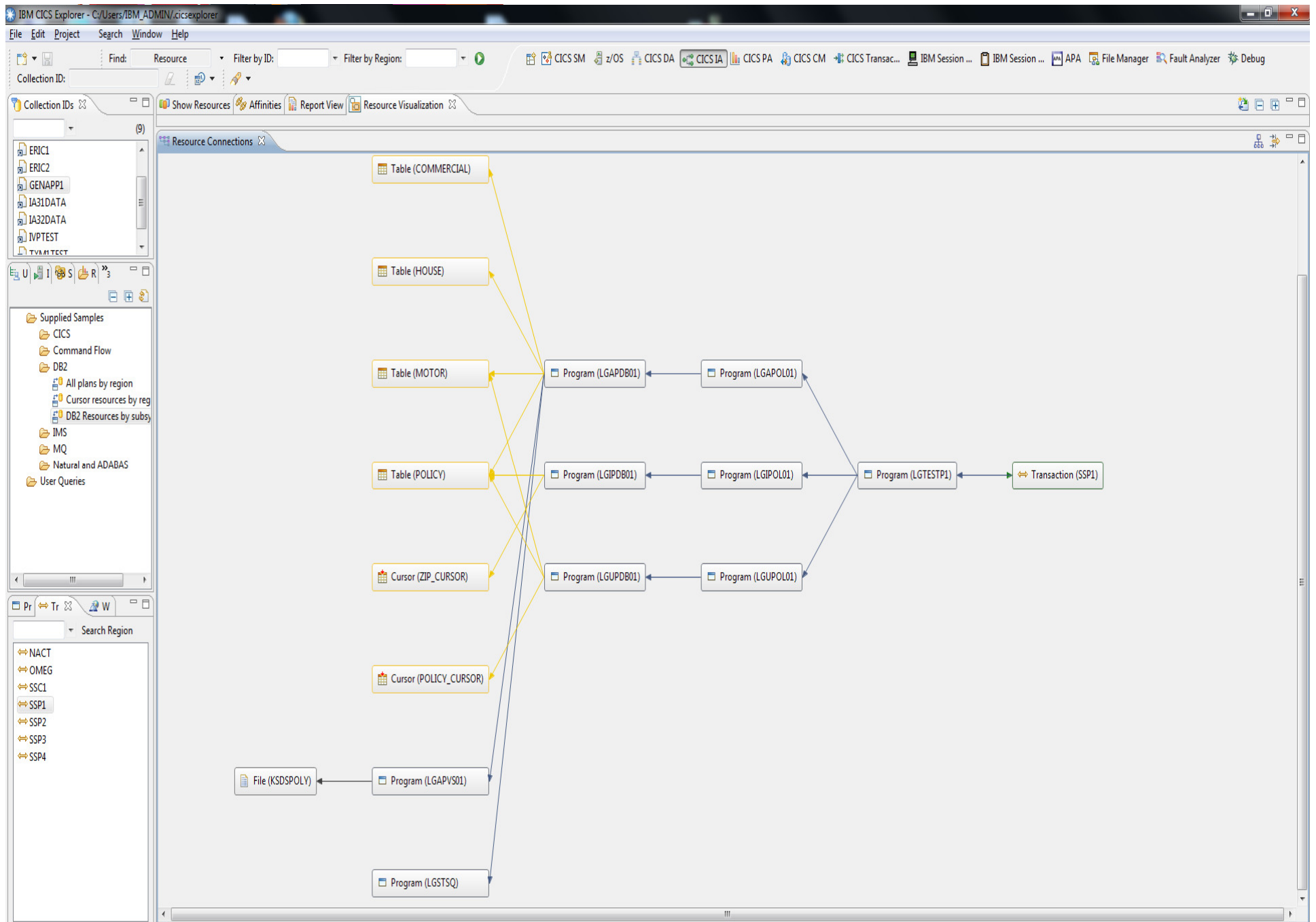
SSP1

LGTESTP1

Context Menu:

- Create Event
- Used By Regions
- Show Tasks
- Visualization
- Used By Applications
- Used By Programs
- Used By Transactions
- Show Affinities By Type
- Show Command Flow runs
- Uses Resources
- Threadsafe Report
- Transaction summary
- Transaction timeline
- Asset details

Taskbar: 1:32 PM 1/2/2013



The screenshot displays the IBM CICS Explorer application window. The title bar reads "IBM CICS Explorer - C:/Users/IBM\_ADMIN/cicsexplorer". The menu bar includes File, Edit, Search, Project, Window, and Help. Below the menu bar is a toolbar with icons for Find, Resource, Filter by ID, Filter by Region, and Collection ID. The main interface is divided into several panels:

- Collection IDs (9):** A list of collection IDs, including AFFTDATA and ERIC1.
- Queried (9):** A list of queried items, including Supplied Samples, CICS, Affinities, Exits, General, All programs using files, All transactions by region, All transactions using files, Commands in QR mode by program, Programs last used before a given date, Resource usage by program, TS41 Migration, Threadsafe, All programs that issue a GETMAIN SHARED, All programs that issue a GETMAIN, All programs that issue a LOAD, All programs that issue an ADDRESS CWA, All programs that issue an EXTRACT EXIT, All programs which may have threadsafe integrity issues, CICS Commands by TCB mode and program, DB2 Commands by TCB mode and program, Dynamic COBOL calls by TCB mode And Program, IMS Commands by TCB mode and program, MQ Commands by TCB mode and program, Upgrades, Webservices, Command Flow, DB2, and All plans by region.
- \*Show Resources:** A panel showing resource types and their usage. It lists "All transactions using files" (109) and "Used By" (10). The "Used By" panel shows programs using File(ECATALOG) in all regions, including ECAT30, ECAD10, ECWORKR, and ECAT35.
- Transaction(SSP1) in Region CICSACB6 (21):** A panel showing resources used by the transaction. It lists "Resources used" (8) and "By Resource" (1). The "Resources used" panel lists programs like LGAPDB01, LGAPOL01, LGAPVS01, LGIPDB01, LGIPOL01, LGTESTP1, LGUPDB01, and LGUPOL01. The "By Resource" panel lists LGTESTP1.
- Programs using SSP1:** A panel showing programs using the transaction. It lists CICSACB6 and SSP1, with LGTESTP1 as a sub-program.

The bottom of the window shows a taskbar with various application icons and a system tray with the date and time (2:22 PM, 1/2/2013).

IBM CICS Explorer - C:/Documents and Settings/Administrator/.cicsExplorerv5100

File Edit Project Search Window Help

STC VI

APA Observations List (CAZO) - Remote

ReqNum	Owned By	Description	Job Name	Date/Time	Samples	Status	Del Days
0560	DNET409		CICSAOR6	Jan-17 15:34	20,000	Ended	Keep
0559	DDS1687	Focus on SSP1 bin	CICSAOR6	Jan-16 14:18	2,000	Ended	Keep
0558	DDS1687		CICSAOR6	Jan-16 14:02	1,000	Ended	Keep
0557	SY5028	Prueba de db2 connect contra DIST	DSNADIST	Jan-14 10:45	60	Ended	Keep
0556	SY5028	Prueba de db2 connect sin CDB2	DSNADBM1	Jan-14 10:43	5,000	Ended	Keep
0555	SY5028	Prueba de db2 connect sin CDB2	DSNAMSTR	Jan-14 10:38	5,000	Ended	Keep
0554	SY5028	Prueba de db2 connect sin CDB2	DSNADIST	Jan-11 05:30	60	Ended	Keep
0549	SY5028	Prueba de db2 connect	DSNADIST	Dec-18 11:12	60	Ended	Keep
0544	SY5028	Prueba de DB2	LISCLAJ	Dec-18 09:28	177	Ended	Keep
0541	DNET461	Carina	CICSAOR5	Dec-17 12:51	50,000	Ended	Keep
0540	NM16144	Vene	VALPA2	Dec-14 14:52	15,000	Ended	Keep
0539	SY5028	Prueba de db2 connect	DSNADIST	Dec-13 07:15	60	Ended	Keep
0535	NM16144	Reporte por OC4 vene	VALPA1	Dec-12 07:45	1,000	Ended	Keep
0526	DNET461	pru	DNET461X	Dec-11 14:08	7,000	Steps	Keep

Details (0560) Reports (0560)

E05: CICS Total Service Time by Txn (0560/CICSAOR6)

Name	NTXNS	Description	Error	Execution	Suspend	Delay	Service
CSSY	3		+58.8%	0.000	359.940	0.000	359.940
CIN8	1		+99.9%	0.000	119.980	0.000	119.980
CONL	1		+99.9%	0.000	119.980	0.000	119.980
CINT	1		+99.9%	0.000	119.980	0.000	119.980
CSNC	1	IRC connection manager	+99.9%	0.000	119.980	0.000	119.980
CSKL	1	TCP/IP Listener	+99.9%	0.000	119.980	0.000	119.980
CFQR	1		+99.9%	0.000	119.980	0.000	119.980
CISM	1		+99.9%	0.000	119.980	0.000	119.980
CISR	1		+99.9%	0.000	119.980	0.000	119.980
CSHQ	1	scheduler service	+99.9%	0.000	119.980	0.000	119.980
CEX2	1	CICS/DB2 Service Transaction	+99.9%	0.000	119.980	0.000	119.980
COIE	1		+99.9%	0.011	119.956	0.011	119.980
COIO	1		+99.9%	0.000	119.980	0.000	119.980
CSNE	1	VTAM node abnormal	+99.9%	0.000	119.980	0.000	119.980
CISP	1		+99.9%	0.000	119.980	0.000	119.980
CISE	1		+99.9%	0.000	119.980	0.000	119.980
CFQS	1	RLS Quiesce	+99.9%	0.000	119.980	0.000	119.980
CEPF	1		+99.9%	0.000	119.980	0.000	119.980
CSTP	1		+99.9%	0.000	119.980	0.000	119.980
CEPM	1		+99.9%	0.000	119.980	0.000	119.980
CSOL	1	TCPIP Listener	+99.9%	0.000	119.980	0.000	119.980
SSPT	4		+50.0%	0.000	78.610	0.000	78.610
- LGTESTP1		CICS Program		0.000	78.610	0.000	78.610
- CICS		System Services		0.000	78.610	0.000	78.610
- ZCLOWAIT		Wait on Terminal I/O		0.000	78.610	0.000	78.610
CSAC	1	Abnormal conditio	+99.9%	0.005	0.000	0.000	0.005
ECAT	1		+99.9%	0.000	0.005	0.000	0.005

STC Pr

Property	Value
DSNHLQ	APA.V12R1
Job	CAZO
Started	2013-01-19 1
Sysplex	CAZPLEX
Version	12.10F

E05 Options

Option	Value
Levels	9

demonvs:8111

IBM CICS Explorer - C:/Documents and Settings/Administrator/.cicsExplorerV5100

File Edit Project Operations Definitions Run Search Window Help

CICSplex Explorer CICSplex Repositories Regions Tasks ISC/MRO Connections Terminals Files Transactions Programs Name: LG\*

Server: CPSPM

- CICS DAX1 (6/6)
- CICS PLX1 (10/12)
  - WLMARY CPSPM (ACTIVE)
    - CICBRAC
    - CICSAOR8
    - CICSAOR1 (CICSACB1)
    - CICSAOR2 (CICSACB2)
    - CICSAOR3 (CICSACB3)
    - CICSAOR4 (CICSACB4)
    - CICSAOR5 (CICSACB5)
    - CICSAOR6 (CICSACB6)
    - CICSAOR7 (CICSACB7)
    - CICSAOR8 (CICSACB8)
    - CICSCM (CICSQM)
    - CICSWUI (CPSPMWUI)
  - AORBRCP1 (AOR Group CAC BR teste)
  - AORGRP1 (AOR Group 1)
  - AORGRP2 (AOR Group 2)
  - AORGRP3 (AOR Group 3)
  - CICGRP01 (System Group for CICSOR1)
  - CICGRP02 (System group for CICSOR2)
  - CICGRP03 (System group for CICSOR3)
  - CICGRP04 (System group for CICSOR4)
  - CICGRP05 (System group for CICSOR5)
  - EVNREGNS (Even Numbered Regions)
  - GRP0102 (Grupo aor 1 e 2)
  - GRP0103
  - GRP0104 (AOR2 + AOR3)
  - LKGRP (LK Group)
  - ODDREGNS (Odd Numbered AOR Regions)
  - SGSERASA (SYSTEM GROUP SERASA)
  - TESTREFR (AOR Group teste REFRESH)
  - WILLGRP (WILLIAM CREATE A CICS GROUP)
  - WLMARGRP (WLM Demo AOR Group - Target Regions)

CNX0211 Context: CICSOR6, Resource: PROGRAM, 25 records collected at Jan 22, 2013 10:02:47 AM

Region	Name	Status	Use Count	Concurrent Use...	Language	Share Status	CEDF Status	NEWCOPY Status
CICSAOR6	LGACD801	✓ ENABLED	0	0	LE370	PRIVATE	CEDF	NOTREQUIRED
CICSAOR6	LGACU501	✓ ENABLED	0	0	COBOL	PRIVATE	CEDF	NOTREQUIRED
CICSAOR6	LGACV501	✓ ENABLED	0	0	COBOL	SHARED	CEDF	NOTREQUIRED
CICSAOR6	LGAPD801	✓ ENABLED	0	0	COBOL	PRIVATE	NOCEDF	NOTREQUIRED
CICSAOR6	LGAPOL01	✓ ENABLED	0	0	COBOL	PRIVATE	CEDF	NOTREQUIRED
CICSAOR6	LGAPV501	✓ ENABLED	0	0	COBOL	PRIVATE	CEDF	NOTREQUIRED
CICSAOR6	LGDPD801	✓ ENABLED	0	0	COBOL	PRIVATE	CEDF	NOTREQUIRED
CICSAOR6	LGDPOL01	✓ ENABLED	0	0	COBOL	PRIVATE	CEDF	NOTREQUIRED
CICSAOR6	LGDPV501	✓ ENABLED	0	0	COBOL	PRIVATE	CEDF	NOTREQUIRED
CICSAOR6	LGICD801	✓ ENABLED	1	0	COBOL	PRIVATE	CEDF	NOTREQUIRED
CICSAOR6	LGICU501	✓ ENABLED	1	0	COBOL	PRIVATE	CEDF	NOTREQUIRED
CICSAOR6	LGICV501	✓ ENABLED	0	0	COBOL	PRIVATE	CEDF	NOTREQUIRED
CICSAOR6	LGIPD801	✓ ENABLED	22	0	COBOL	PRIVATE	CEDF	NOTREQUIRED
CICSAOR6	LGIPOL01	✓ ENABLED	22	0	COBOL	PRIVATE	CEDF	NOTREQUIRED
CICSAOR6	LGIPV501	✓ ENABLED	0	0	COBOL	PRIVATE	CEDF	NOTREQUIRED
CICSAOR6	LGSETUP	✓ ENABLED	0	0	COBOL	PRIVATE	CEDF	NOTREQUIRED
CICSAOR6	LGSTSQ	✓ ENABLED	0	0	COBOL	PRIVATE	CEDF	NOTREQUIRED
CICSAOR6	LGTESTC1	✓ ENABLED	2	0	COBOL	PRIVATE	CEDF	NOTREQUIRED
CICSAOR6	LGTESTP1	✓ ENABLED	28	0	COBOL	PRIVATE	CEDF	NOTREQUIRED
CICSAOR6	LGTESTP2	✓ ENABLED	0	0	COBOL	PRIVATE	CEDF	NOTREQUIRED
CICSAOR6	LGTESTP3	✓ ENABLED	5	0	COBOL	PRIVATE	CEDF	NOTREQUIRED
CICSAOR6	LGTESTP4	✓ ENABLED	0	0	COBOL	PRIVATE	CEDF	NOTREQUIRED
CICSAOR6	LGUPD801	✓ ENABLED	0	0	COBOL	PRIVATE	CEDF	NOTREQUIRED
CICSAOR6	LGUPOL01	✓ ENABLED	0	0	COBOL	PRIVATE	CEDF	NOTREQUIRED
CICSAOR6	LGUPV501	✓ ENABLED	0	0	COBOL	PRIVATE	CEDF	NOTREQUIRED

Open  
New Copy  
Phase In  
Discard  
Enable  
Disable  
Copy Ctrl+C  
DTCN  
Update profile  
Manage profile...

Properties Error Log Host Connections DTCL Local Profiles DTCL Server Profiles DTSP Profile

Owner	Status	Tran...	Ter...	Load Module	Compile Unit	User Id	Sess...	Session Addr...	Port#	Test ...	Level	Commands File	Preference File
DDS1687	Active		2002	*	LGTESTP1	DDS1687	TCP	9.55.177.75	8006	TEST	ERROR	*	*
DNET047	Inactive		2002	CD*	CD*	DNET047	MF1	2002		TEST	ALL	*	*
DNET246	Inactive		2002	CDAT1	*	DNET246	MF1	2002		TEST	ERROR	*	*
DNET249	Inactive			*	CDAT2		MF1	0073		TEST	ALL	*	*
DNET409	Active	SSC1	2004			DNET409	TCP	9.77.133.203	8001	TEST	ALL	*	*

Profile Overview

General information

Name: Local 1  
Description: Debug LGTESTP1  
Profile owner user ID: DDS1687

Pattern matching resources

Resources to debug

Transaction Id: Terminal Id: 2002

Load Module and Compile Unit (maximum 8 pairs)

Load Module	Compile Unit
*	LGTESTP1

Add  
Delete

User Id: DDS1687 NetName:  
IP Name/Address:

Commarea  
Offset: 0 Data:

Container  
Name: Offset: 0 Data:

URM Debugging: NO Profile Status: INACTIVE

Test run time options

Test Type: TEST Test Level: ERROR Session Type: TCP  
Prompt: PROMPT

Session Address or Terminal Id: 9.55.177.75 Port: 8006

Commands File: \*  
Preference File: \*  
EQA\_OPTS File:  
Other Language Environment Options:

Profile Overview

Demomvs:3041

IBM CICS Explorer - C:/Documents and Settings/Administrator/.cicsExplorerv5100

File Edit Project Run Search Window Help

Debug LGTESTP1 [Incoming Remote Debug Session]  
 Platform: zOS 390X Connection: demomvs.demopkg.ibm.com:10977  
 Thread: 1 (Runnable)  
 LGTESTP1: 01  
 Process: 610284592 Program: LGTESTP1

Variables Breakpoints Modules Monitors Registers

Local 1 Local 2 Local 3 DNET409.CB12.COBOIST(LGTESTP1)

Line	Column	Insert	Browse
1	1	*****	*****
2	1	*	*
3	1	*	*
4	1	*	*
5	1	*	*
6	1	*	*
7	1	*	*
8	1	*	*
9	1	*	*
10	1	*	*
11	1	*	*
12	1	*****	*****
13	1	IDENTIFICATION DIVISION.	
14	1	PROGRAM-ID. LGTESTP1.	
15	1	ENVIRONMENT DIVISION.	
16	1	CONFIGURATION SECTION.	
17	1	*	*
18	1	DATA DIVISION.	

Outline: An outline is not available.

Console Debug Console DTCN Server Profiles DTCN Local Profiles Memory

```
call %ver
EQA2441I IBM Debug Tool Version 12 Release 1 Mod 0
12/11/2012 09:47:00 AM Level: V12R1 PM78569
EQA2442I 5655-W70: Copyright IBM Corp. 1992, 2012
```

Debug Engine Command: call %ver Enter Commands...

IBM CICS Explorer - C:/Documents and Settings/Administrator/.cicsExplorerv5100

File Edit Project Run Search Window Help

Debug LGTESTP1 [Incoming Remote Debug Session]  
 Platform: zOS 390X Connection: demomvs.demopkg.ibm.com:27414  
 Thread:1 (Runnable)  
 LGTESTP1: 01  
 Process: 610284592 Program: LGTESTP1

Variables Breakpoints Modules Monitors Registers

ENP1COLI = 'BLUE'

Local 1 Local 2 Local 3 DNET409.CB12.COBLST(LGTESTP1)

Line	Column	1	Insert	Browse
765		END-IF		
766				
767		Move CA-ISSUE-DATE	To ENP1IDAI	
768		Move CA-EXPIRY-DATE	To ENP1EDAI	
769		Move CA-M-MAKE	To ENP1CMKI	
770		Move CA-M-MODEL	To ENP1CMOI	
771		Move CA-M-VALUE	To ENP1VALI	
772		Move CA-M-REGNUMBER	To ENP1REGI	
773		Move CA-M-COLOUR	To ENP1COLI	
774		Move CA-M-CC	To ENP1CCI	
775		Move CA-M-MANUFACTURED	To ENP1MANI	
776		EXEC CICS SEND MAP ('SSMAP1')		
777		FROM(SSMAP10)		
778		MAPSET ('SSMAP')		
779		END-EXEC		

Outline: An outline is not available.

Console Debug Console DTCN Server Profiles DTCN Local Profiles Memory

Monitors

ENP1COLI

ENP1COLI : 0x2460EECB <Hex and Char (single pane)>

0x2460EECB	C2D3E4C5	40404040	00000000	00000000	00000000	00000000	00000000	BLUE
0x2460EEE3	00000000	00000000	000100F1	00000000	00000000	00000000	00000000	1
0x2460EEFB	00000000	00000000	00000000	00000000	00000000	00000000	00000000	
0x2460EF13	00000000	00000000	00000000	00000000	00000000	00000000	00000000	
0x2460EF2B	00000000	00000000	00000000	00000000	00000000	00000000	00000000	
0x2460EF43	00000000	00000000	00000000	00000000	00000000	00000000	00000000	
0x2460EF5B	00000000	00000000	00000000	00000000	00000000	00000000	00000000	

IBM CICS Explorer - C:/Documents and Settings/Administrator/.cicsExplorerv5100

File Edit Project Search Window Help

demomvs.demopkg.ibm.com:2800/FAULTANL.V12R1.HIST (F01815)

7 A CICS abend ASRA occurred in module **LGTESTP3** program LGTESTP3 at offset X'CF4'.

9 A program-interruption code 000B (Decimal-Divide Exception) is associated with this abend and indicates that:

12 The divisor was zero in a signed decimal division.

14 The cause of the failure was program LGTESTP3 in module LGTESTP3. The COBOL source code that immediately preceded the failure was:

17 Source

18 Line #

19 -----

20 000783 COMPUTE TAXES-DUE =

21 **000784 ((EQUALIZATION-ADJ / CA-H-VALUE) \***

22 000785 TAX-RATE) / 100

23

24 The COBOL source code for data fields involved in the failure:

26 Source

27 Line #

28 -----

29 000025 05 EQUALIZATION-ADJ PIC S9(9) COMP-3 VALUE 10000.

30 000671 07 CA-H-VALUE PIC 9(8).

31

32 Data field values at time of abend:

33

34 **CA-H-VALUE = 0 \*\*\* Cause of error \*\*\***

Summary

Synopsis

Event summary

Event details

Abend job info

System wide info

Prolog

Options in effect

Epilog

Minidump

Main Report | Event Details | Abend Information | System-Wide Information | Miscellaneous

demomvs.demopkg.ibm.com:2800/FAULTANL.V12R1.HIST

Lookup Markers Manage configurations

FAULT_ID	JOB/TRAN	USER_ID	SYS/JOB	ABEND	I_ABEND	JOB_ID	USERNAME
F01815	<b>CICSAOR6/SSP3</b>	DNET409	DEMOMVS /CICSAOR6	ASRA	ASRA	STC04866	
F01814	DB1SWLM	SYSSTC	DEMOMVS /DB1SWLM	U4038	U4038	STC08004	
F01813	IMSTMSG1	SYSSTC	DEMOMVS /IMSTMSG1	U0002	n/a	JOB05174	
F01812	CICSAOR6/FCAT	DD51687	DEMOMVS /CICSAOR6	ASRA	ASRA	STC04866	

Writable Insert 1:1

IBM CICS Explorer - C:/Documents and Settings/Administrator/.cicsExplorerv5100

File Edit Project File Manager Search Window Help

Systems Information

Type here to search the tree (Ctrl+F)

DSNT:

DB1S

Tables: GENAPP.\*

GENAPP.CLAIM

GENAPP.COMMERCIAL

GENAPP.CPA\_CMFPUSUM

GENAPP.CPA\_EXPLOR41

GENAPP.CPA\_HSTG0SAA

GENAPP.CPA\_HSTG000A

GENAPP.CPA\_HSTG001A

GENAPP.CPA\_HSTG002A

GENAPP.CPA\_HSTG003A

GENAPP.CPA\_HSTG004A

GENAPP.CPA\_HSTG005A

GENAPP.CPA\_HSTG006A

GENAPP.CPA\_HSTG007A

GENAPP.CPA\_HST0SAA

GENAPP.CPA\_HST010A

GENAPP.CPA\_HST011A

Properties

Property	Value
Creator	GENAPP
Database	GENAPP
Database (hex)	C7C5D5C1D7D7
Name	CLAIM
Name (hex)	C3D3C1C9D4
Subsystem	DB1S
Table Space	GENATS07
Type	Table

DB2:TBL:DB1S:GENAPP.COMMERCIAL

Navigation

Cursor

Current 1 Total 5

	POLICYNUMBER	REQUESTDATE	STARTDATE	RENEWALDATE	ADDRESS	ZIPCODE
1	10	2011-08-23-10.44.34.000000	2011-08-25	2011-08-24	HURSLEY PARK	SO212JN
2	9	2011-07-17-13.13.09.000000	2011-08-01	2011-07-30	TURF MOOR	BB104BX
3	1000003	2012-01-05-07.25.03.274699	2012-01-05	2013-01-01	125 MAINT ST	1200
4	1000024	2012-02-09-08.53.16.559283	2012-01-01	2014-12-31	13 MAIN ST	19999-10
5	1000025	2012-02-09-08.54.05.454211	2012-01-01	2014-12-31	13 MAIN ST	19999-10

Template FM Generated Template

Formatted Mode

DB2:TBL:DB1S:GENAPP.COMMERCIAL

Lookup Console Host Connections

Layout DB2:TBL:DB1S:GENAPP.COMMERCIAL

Current 1 Total 5 Cursor

Ref#	Key	Column Name	Data Type (Length)	Data
1	PU F	POLICYNUMBER	INTEGER	10
2		REQUESTDATE	TIMESTAMP	2011-08-23-10.44.34.000000
3		STARTDATE	DATE	2011-08-25
4		RENEWALDATE	DATE	2011-08-24
5		ADDRESS	CHARACTER (255)	HURSLEY PARK
6		ZIPCODE	CHARACTER (8)	SO212JN
7		LATITUDE	CHARACTER (11)	51.026701
8		LONGITUDE	CHARACTER (11)	-1.398903
9		CUSTOMER	CHARACTER (255)	IBM
10		PROPERTYTYPE	CHARACTER (255)	OFFICES
11		FIREPERIL	SMALLINT	3
12		FIREPREMIUM	INTEGER	8000
13		CRIMEPERIL	SMALLINT	3
14		CRIMEPREMIUM	INTEGER	25000

View Mode DB2 Single Mode Insert Mode Insert

IZE0100I Connected user DDS1687 to host demomvs.demopkg.ibm.com on port 2800

Demomvs:2800

IBM CICS Explorer - C:\Users\IBM\_ADMIN\cicsexplorer

File Edit File Manager Project Search Window Help

CICS SM z/OS CICS DA CICS PA CICS IA CICS CM File Manager CICS Transac... APA IBM Session ... IBM Session ... Fault Analyzer Debug

Systems Information

Type here to search the tree (Ctrl+F)

- demomvs.demopkg.ibm.com:2800 - DemoMVS PD tools
  - Action History
  - CICS
  - Data Sets
    - Browse My Data Sets
  - DB2
    - Browse DB2 Subsystems
    - DB1S
      - Databases: DMUSERS.\*
        - CVTDB
        - GENAPP
      - Browse My Tables
      - HUMANA
      - IA31DB
      - IA32DB
      - IA32DEMO
      - IA51DB
      - SMRTDEV
    - Message Queue Managers
    - UNIX System Services

ZT00PLEX (by CMAS) ZT00PLEX CICACB04: Region DB2:TBL:DB1S:GENAPP.HOUSE

Navigation  1  4  VIEW

	POLICYNUMBER	PROPERTYTYPE	BEDROOMS	VALUE	HOUSENAME	HOUSENUMBER	POSTCODE
1	6	HOUSE	5	0		5	SO211UP
2	7	FARM	8	37...	HOME FARM	4	SO529ED
3	8	FLAT	1	26...		12b	E15WW
4	1000023	SINGLE FAMILY	40	17...	SLEEPYHOLLOW	128	19901-58

Template FM Generated Template

Formatted Mode

Properties

Property	Value

Lookup Console DB2:TBL:DB1S:GENAPP.HOUSE

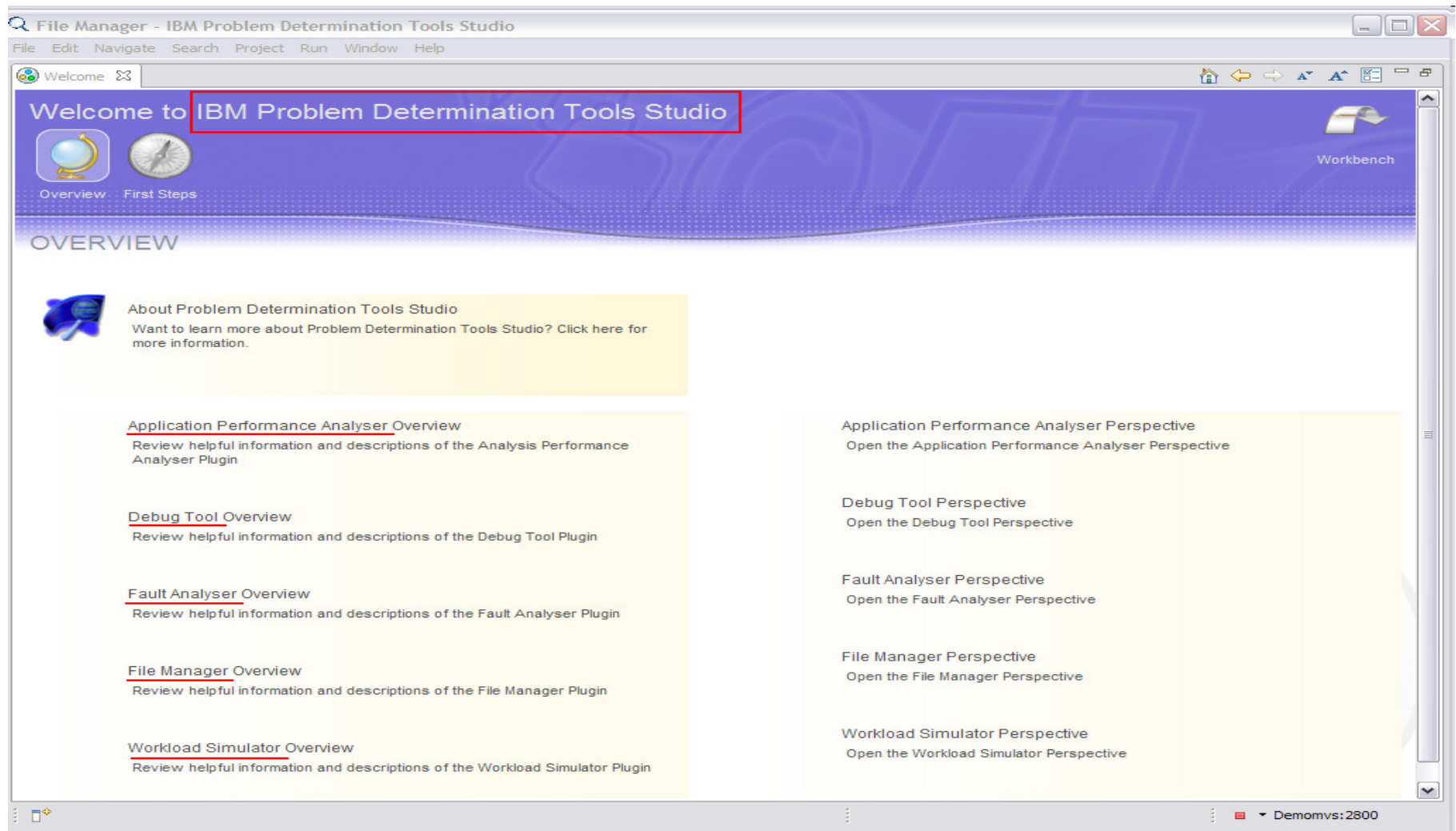
Layout DB2:TBL:DB1S:GENAPP.HOUSE  1  4

Ref#	Key	Column Name	Data Type (Length)	Data
1	PU F	POLICYNUMBER	INTEGER	6
2		PROPERTYTYPE	CHARACTER (15)	HOUSE
3		BEDROOMS	SMALLINT	5
4		VALUE	INTEGER	0
5		HOUSENAME	CHARACTER (20)	
6		HOUSENUMBER	CHARACTER (4)	5
7		POSTCODE	CHARACTER (8)	SO211UP

View Mode DB2 Single Mode Insert Mode Insert

Insert DemoMVS PD tools

3:06 PM 1/25/2013





- **The LGTESTP3 program has been fixed....**
  - Use CM to correct the TCLASS definition
  - Install corrected definition, new copy program

IBM CICS Explorer - C:\Users\IBM\_ADMIN\cicsexplorer

File Edit Operations Definitions Search Project Window Help

CICS SM z/OS CICS DA CICS IA CICS PA CICS CM CICS Transac... IBM Session ... IBM Session ... APA File Manager Fault Analyzer Debug

Configurations Change Packages Search Results Transaction Defini Program Definitio File Definitions TD Queue Definiti

Transaction Definition (SSP1)

Transaction Definition (SSP1)

Attributes

CSDAOR6 CSDAOR6 SSP1

Property	Value
Alias	
Basic	
Definition Signature	
Change Agent	CSDAPI
Change Release	0670
Change Time	Jan 2, 2013 12:40:25 PM
Change User ID	DNET409
Create Time	Jan 2, 2013 12:38:59 PM
Details	
Brexit	
Isolation	YES
Partitionset	
Profile	DFHCICST
Program Name	LGTESTP1
Runaway Time	SYSTEM
Shutdown	DISABLED
Storageclear	NO
Task Data Key	USER
Task Data Location	ANY
Twasize	0
In Doubt	
Recovery	
Remote	
Scheduling	
Priority	1
Tranclass	DFHTCL09
Security	

Overview Remote Termination Runtime Alias Recovery Attributes

Group List Definitions Groups

GEN\* in (CSDAOR6)

GENA  
GENASAD  
GENASAF  
GENASAP  
GENASAT  
GENASA2

CNX0211I Context: GENASA2. Resource: TRANDEF. 4 records collected at Jan 2, 2013 1:39:53 PM

Name	Version	Create Time	Change Time	Description	Status
SSP1	0	Jan 2, 2013 12:38:...	Jan 2, 2013 12:38:...		ENABLED
TEST	0	Apr 27, 2012 8:25:...	Sep 25, 2012 9:10:...		ENABLED
TES2	0	Jun 3, 2012 6:55:...	Jun 3, 2012 10:15:...	demo transaction	ENABLED
TES3	0	Jun 4, 2012 1:39:...	Sep 25, 2012 9:11:...	demo test	DISABLED

History

Resource History for SSP1 from 2012/10/02 13:39:56 to latest entry

Revision Time	Resource Name/After	Resource Type/Before	Group	User Name	Configurati
2013/01/02 12:40:25	SSP1	TRANDEF	GENASA2	DNET409	CSDAOR6
traclass	DFHTCL09	DFHTCL00			
2013/01/02 12:38:59	SSP1	TRANDEF	GENASA2	DNET409	CSDAOR6
2013/01/02 12:38:04	SSP1	TRANDEF	GENASA2	DNET409	CSDAOR6
2012/12/31 10:41:46	SSP1	TRANDEF	GENASA2	DNET409	CSDAOR6

IBM CICS Explorer - C:/Users/IBM\_ADMIN/cicsexplorer

File Edit Operations Definitions Search Project Window Help

CICS SM z/OS CICS DA CICS IA CICS PA CICS CM CICS Transac... IBM Session ... IBM Session ... APA File Manager Fault Analyzer Debug

Configurations Change Packages Search Results Transaction Definitions Program Definitions File Definitions TD Queue Definitions

Name: [ ]

CNX0211I Context: GENASA2. Resource: TRANDEF. 4 records collected at Jan 2, 2013 2:02:10 PM

Name	Version	Create Time	Change Time	Description	Status
SSP1	0	Jan 2, 2013 12:38:59 PM	Jan 2, 2013 12:40:25 PM		ENABLED
TEST	0	Apr 27, 2012 8:25:27 AM	Sep 25, 2012 9:10:38 PM		ENABLED
TES2	0	Jun 3, 2012 6:55:44 PM	Jun 3, 2012 10:15:27 PM	demo transaction	ENABLED
TES3	0	Jun 4, 2012 1:39:41 PM	Sep 25, 2012 9:11:06 PM	demo test	DISABLED

Group List Definitions Name: GEN\*

CNX0211I Context: CSDAOR6. Resource: CSDLIST. 1 records collected at Jan 2, 2013

Name	CICS System
GENALIST	N/A

Resource Group Definitions Name: GEN\*

CNX0211I Context: CSDAOR6. Resource: CSDGROUP. 6 records collected at Jan 2, 2013

Name	CICS System
GENA	N/A
GENASAD	N/A
GENASAF	N/A
GENASAP	N/A
GENASAT	N/A
GENASA2	N/A

History Resource History

Revision Time 2013/01/02 12:38:59

tpname profile DFHCICST name SSP1 isolation YES transclass DFHTCL00

Open Restore Find current version Dependencies Compare with current version New from...

Resource Type/Before	Group	User Name	Configuration	Command	Change Package	Scheme
TRANDEF	GENASA2	DNET409	CSDAOR6	UPDATE		
DFHTCL00	GENASA2	DNET409	CSDAOR6	COPY		

DemoMVS CM

2:02 PM 1/2/2013

IBM CICS Explorer - C:\Users\IBM\_ADMIN\cicsexplorer

File Edit Operations Definitions Search Project Window Help

CICS SM z/OS CICS DA CICS IA CICS PA CICS CM CICS Transac... IBM Session ... IBM Session ... APA File Manager Fault Analyzer Debug

Configurations Change Packages Search Results Transaction Definitions Program Definitions File Definitions TD Queue Definitions

Name:

CNX0211I Context: GENASA2. Resource: TRANDEF. 4 records collected at Jan 2, 2013 2:02:10 PM

Name	Version	Create Time	Change Time	Description	Status
SSP1	0	Jan 2, 2013 12:38:59 PM	Jan 2, 2013 12:40:25 PM		ENABLED
TEST		Apr 27, 2012 8:25:27 AM	Sep 25, 2012 9:10:38 PM		ENABLED
TES2		Jun 3, 2012 6:55:44 PM	Jun 3, 2012 10:15:27 PM	demo transaction	ENABLED
TES3		Jun 4, 2012 1:39:41 PM	Sep 25, 2012 9:11:06 PM	demo test	DISABLED

Group List Definitions Name: GEN\* CNX0211I Context: CSDAOR6. Resource: CSDLIST. 1 records collected at Jan 2, 2013

Name	CICS System
GENALIST	N/A

Resource Group Definitions Name: GEN\* CNX0211I Context: CSDAOR6. Resource: CSDGROUP. 6 records collected at Jan 2, 2013

Name	CICS System
GENA	N/A
GENASAD	N/A
GENASAF	N/A
GENASAP	N/A
GENASAT	N/A
GENASA2	N/A

History Properties

Resource History for SSP1 from 2012/10/02 14:04:05 to latest entry

Revision Time	Resource Name/After	Resource Type/Before	Group	User Name	Configuration	Command	Change Package	Scheme
2013/01/02 13:01:40	SSP1	TRANDEF	GENASA2	DNET409	CSDAOR6	UPDATE		
2013/01/02 12:40:25	SSP1	TRANDEF	GENASA2	DNET409	CSDAOR6	UPDATE		
2013/01/02 12:38:59	SSP1	TRANDEF	GENASA2	DNET409	CSDAOR6	COPY		

2:04 PM 1/2/2013

IBM CICS Explorer - C:/Users/IBM\_ADMIN/cicsexplorer

File Edit Operations Definitions Search Project Window Help

CICSplex Explor CICSplex Repos Configurations

Server: CPSPM

Regions Tasks ISC/MRO Connections Terminals Files Transactions Programs

Context: CICSOR6. Resource: PROGRAM. 5 records collected at Jan 2, 2013 3:33:39 PM

Region	Name	Status	Use Count	Concurrent Use Count	Language	Share Status	CEDF Status	NEWCOPY Status
CICSAOR6	LGTESTC1	✓ ENABLED	21	0	COBOL	PRIVATE	CEDF	NOTREQUIRED
CICSAOR6	LGTESTP1	✓ ENABLED			COBOL	PRIVATE	CEDF	NOTREQUIRED
CICSAOR6	LGTESTP2	✓ ENABLED			COBOL	PRIVATE	CEDF	NOTREQUIRED
CICSAOR6	LGTESTP3	✓ ENABLED			COBOL	PRIVATE	CEDF	NOTREQUIRED
CICSAOR6	LGTESTP4	✓ ENABLED			COBOL	PRIVATE	CEDF	NOTREQUIRED

Open  
New Copy  
Phase In  
Discard  
Enable  
Disable  
Copy Ctrl+C  
Dependencies  
DTCN

Properties Error Log System Log z/OS Job History Search Results Host Connections Uses

Connections

type filter text

- Application Performance Analyzer (1)
  - DemoMVS APA
- CICS Deployment Assistant (3)
  - DemoMVS DA
  - ZserverOS DA
  - MOP BLUE - DA
- CICS System Management (9)
  - CICSplex SM Data Interface (3)
  - CMCI (3)
  - Configuration Manager (3)

Credentials

- Austin [DNET409]
- MOP Blue [SUC115]

Add... Edit... Delete Connect Disconnect

▼ DemoMVS CM

3:33 PM 1/2/2013

IBM CICS Explorer - C:/Users/IBM\_ADMIN/cicsexplorer

File Edit Operations Definitions Search Project Window Help

CICS SM z/OS CICS DA CICS IA CICS PA CICS CM CICS Transac... IBM Session ... IBM Session ... APA File Manager Fault Analyzer Debug

Configurations Change Packages Filter:

Packages	Description	Last Action	Changetime	Last User	Last Scheme	Last Return Code	Last Reason Code	External Reference
00000001	Migrate resources from CICS TS 3.2 to 4.1	READY	2012/04/18 05:31:21.81	STANNA	CTS32T41	00000004	001100AC	
00000002	Migrate from AOR6 to AOR7	MIGRATE	2012/02/13 08:24:08.77	DNET409	AOR6TO7	00000004	00040024	
00000003	Migrate from CSD to CPSM BAS	BACKOUT	2012/05/30 03:55:56.57	STANNA	AOR6TO7	00000000	00000000	
BERLIN	test	CREATE	2012/10/18 06:37:46.04	CICSUSER		00000000	00000000	
BNAPKG1	Test Package	BACKOUT	2012/05/18 09:36:18.00	STANNA	AOR6TO7	00000000	00000000	Exter
CARINA	Prueba	MIGRATE	2012/09/17 09:15:11.73	CICSUSER	PRUCARI	00000004	00040024	
CARPACK	prueba del 6 al 7	MIGRATE	2012/09/03 14:37:07.52	CICSUSER	PRUCARI	00000004	00040024	
CP1		CREATE	2012/05/21 06:49:45.78	STANNA		00000000	00000000	
DEMO	Demo PKG	CREATE	2012/07/19 08:28:12.37	SIDDELL		00000000	00000000	
DEV2TEST	Development to Test	READY	2012/09/27 05:44:24.27	STANNA	GENAPP	00000000	00000000	
EMSTEST	test	READY	2012/10/17 12:01:19.60	CICSUSER	GENAPP	00000000	00000000	
ERICDEMO	Demo of change packaging via explorer	UNREADY	2012/09/25 21:26:59.39	DNET409	AOR6TO7	00000000	00000000	
ERICPACK	test package for Eric	MIGRATE	2012/09/18 10:22:48.92	DNET409	AOR6TO7	00000000	00000000	test
GENAPP01	Migration of GENAPP resource	READY	2012/04/29 12:40:09.97	STANNA	GENAPP	00000000	00000000	
JOETEST	Test Package	READY	2012/10/31 06:37:37.16	DNET453	AOR6TO7	00000000	00000000	
SFCPKG1	Package for SFC app	MIGRATE	2012/05/02 17:52:17.51	STANNA	AOR6TO7	00000004	00040024	
SSACHPKG	Change package for WMQ definitions	MIGRATE	2012/07/11 03:44:50.43	SIDDELL	AOR1TO6	00000004	00040024	

Group List Definitions Name: GEN\* CNX02111 Context: CSDAOR6. Resource: CSDLIST. 1 records collected at Jan 2, 2013 2:02:06 PM

Name	CICS System
GENALIST	N/A

Resource Group Definitions Name: GEN\* CNX02111 Context: CSDAOR6. Resource: CSDGROUP. 6 records collected at Jan 2, 2013 2:02:03 PM

Name	CICS System
GENA	N/A
GENASAD	N/A
GENASAF	N/A
GENASAP	N/A
GENASAT	N/A
GENASA2	N/A

Change Package ERICDEM2 deleted successfully

Migration Scheme Select the Migration Scheme to scope the resources by. GENAPP

Resources View ready-list and remove definition resources from this Change Package. Ready list has errors. (Reason : 0006004F)

Resources	Ready State	Group	Configuration	Remove
DB2 Entry Definition (1)				
DB1SLU2	Ready	GENASAD	CSDAOR6	
Enqueue Model Definition (1)				
File Definition (2)				
KSDSCUST	Not Ready	GENASAF	CSDAOR6	
KSDSPOLY	Ready	GENASAF	CSDAOR6	
Program Definition (26)				
Transaction Definition (9)				
LGCF	Ready	GENASAT	CSDAOR6	
LGPF	Ready	GENASAT	CSDAOR6	
LGSE	Ready	GENASAT	CSDAOR6	
SSC1	Ready	GENASAT	CSDAOR6	
SSP1	Ready	GENASAT	CSDAOR6	
SSP2	Ready	GENASAT	CSDAOR6	
SSP3	Ready	GENASAT	CSDAOR6	
SSP4	Ready	GENASAT	CSDAOR6	
test	Unknown	GENASAT	CSDAOR6	

Group resources by type

Resources Commands History

DemoMVS CM

2:09 PM 1/2/2013

IBM CICS Explorer - C:/Users/IBM\_ADMIN/cicsexplorer

File Edit Operations Definitions Search Project Window Help

CICS SM z/OS CICS DA CICS IA CICS PA CICS CM CICS Transac... IBM Session ... IBM Session ... APA File Manager Fault Analyzer Debug

Configurations Change Packages

Name CSD/Context

CICSAOR1	CICSTS.CICSAOR1.DFHCS
CICSAOR2	CICSTS.CICSAOR2.DFHCS
CICSCM	CICSTS.COMMON.DFHCS
CPSMBAS	CICSPLEX1
CSDAOR5	CICSTS.CICSAOR5.DFHCS
CSDAOR6	CICSTS.CICSAOR6.DFHCS

New

Deployment analysis

- Candidates
- Candidates compare
- Check
- Coldstart compare
- Deployment Analysis Editor..

Show history

Show all lists

Show all groups

Show all resources

Clean up

Search

GEN\*

GENASAD

GENASAF

GENASAP

GENASAT

GENASA2

Transaction Definition (SSP1)

Transaction Definition (SSP1)

Attributes

CSDAOR6 CSDAOR6 SSP1

Property	Value
Alias	
Basic	
Definition Signature	
Change Agent	CSDAPI
Change Release	0670
Change Time	Jan 2, 2013 12:40:25 PM
Change User ID	DNET409
Create Time	Jan 2, 2013 12:38:59 PM
Details	
Brexit	
Isolation	YES
Partitionset	
Profile	DFHCICST
Program Name	LGTESTP1
Runaway Time	SYSTEM
Shutdown	DISABLED
Storageclear	NO
Task Data Key	USER
Task Data Location	ANY
Twsize	0
In Doubt	
Recovery	
Remote	
Scheduling	
Priority	1
Tranclass	DFHTCL09
Security	

History

Resource History for SSP1 from 2012/10/02 13:39:56 to latest entry

Revision Time	Resource Name/After	Resource Type/Be
2013/01/02 12:40:25	SSP1	TRANDEF
2013/01/02 12:38:59	SSP1	TRANDEF
2013/01/02 12:38:04	SSP1	TRANDEF
2012/12/31 10:41:46	SSP1	TRANDEF

Overview Remote Termination Runtime Alias Recovery Attributes

IZE0100I Connected user DNET409 to host demomvs.demopkg.ibm.com on port 6023

DemoMVS CM

1:49 PM 1/2/2013

IBM CICS Explorer - C:\Users\IBM\_ADMIN\cicsexplorer

File Edit Operations Definitions Search Project Window Help

CICS SM z/OS CICS DA CICS IA CICS PA CICS CM CICS Transac... IBM Session ... IBM Session ... APA File Manager Fault Analyzer Debug

Configurations Change Packages Search Transa Progra File De TD Qu Transaction Definition (SSP1) Runtime coldstart compare.jcl

Name CSD/Context (12)

Name	CSD/Context
CICSAOR1	CICSTS.CICSAOR1.DFHCS
CICSAOR2	CICSTS.CICSAOR2.DFHCS
CICSCM	CICSTS.COMMON.DFHCS
CPSMBAS	CICSPLEX1
CSDAOR5	CICSTS.CICSAOR5.DFHCS
CSDAOR6	CICSTS.CICSAOR6.DFHCS
CSDAOR7	CICSTS.CICSAOR7.DFHCS
CTS32CSD	CICSTS.V3R2.DFHCS
CTS41CSD	CICSTS.V4R1.DFHCS
CTS42CSD	CICSTS.V4R2.DFHCS
EWHSTAGE	DNET409.STAGE.DFHCS
LIVECMSR	CICSTS.CICSCM.DFHCS

Group List Definitions Groups (6)

GEN\* in (CSDAOR6)

GENA
GENASAD
GENASAF
GENASAP
GENASAT
GENASA2

CNX0220E A connection error has occurred:  
com.ibm.cics.cm.cpsm.comm.CMFilterConnectionException: You must use a filter

Name	Version	Create Ti...	Change Ti...	Description	Status
------	---------	--------------	--------------	-------------	--------

History

Resource History for SSP1 from 2012/10/02 13:39:56 to latest entry

Revision Time	Resource Name/After	Resource Type/Be
2013/01/02 12:40:25	SSP1	TRANDEF
2013/01/02 12:38:59	SSP1	TRANDEF
2013/01/02 12:38:04	SSP1	TRANDEF
2012/12/31 10:41:46	SSP1	TRANDEF

```
//CCVJB1A JOB COLDSTCM,NOTIFY=&SYSUID,
//          CLASS=A,MSGCLASS=H,MSGLEVEL=(1,1)
//-----
/* CCVMAIN - COLD START COMPARE
/*          - RUNTIME: data obtained via CICS CM connection
/*          - CANDIDATES: data obtained from both CSD and CPSM
//-----
//DEPLOY  EXEC PGM=CCVMAIN
//STEPLIB DD DISP=SHR,DSN=CICSCM.V2R1.SCCVAENU
//          DD DISP=SHR,DSN=CICSCM.V2R1.SCCVAUTH
//CCVPRINT DD SYSOUT=*
//CCVREPT DD SYSOUT=*          * OUTPUT REPORT RESULTS
//CCVFLTEX DD SYSOUT=*          * OUTPUT SAMPLE FILTER STATEMENTS
/*CCVFLTEX DD DSN=DNET409.CCV.DAFILTER,
/*          UNIT=SYSDA,SPACE=(TRK,(10,100),RLSE),
/*          LRECL=80,RECFM=FB,BLKSIZE=3200,DSORG=PS,
/*          DISP=(,CATLG,CATLG)
//CCVPARMS DD *
CONNECT  IPADDRESS=DEMOMVS.DEMOPKG.IBM.COM,PORT=6023,SSL=NO
DEPLOY  PHASE=COLLECT,
        REPORTSET=1,
        TYPE=RUNTIME,
        CONFIGURATION=CSDAOR6,
        CONNECTION=AOR6,
        PHASE=COLLECT,
        REPORTSET=2,
        TYPE=CANDIDATES,
        CONFIGURATION=CSDAOR6,
        GRPLIST=LISTAOR6,
        GRPLIST=DFHLIST,
        LOCALSYSID=C22F,
        PHASE=REPORT,
        TYPE=COLDSTARTCOMPARE
/*          FILTERDATASET=DNET409.CCV.DAFILTER
//
```

Runtime coldstart compare.jcl

Submit z/OS Job

Writable Insert 35:3 DemoMVS zOSMF

1ZE0100I Connected user DNET409 to host demomvs.demopkg.ibm.com on port 32207

1:50 PM 1/2/2013

IBM CICS Explorer - C:\Users\IBM\_ADMIN\cicsexplorer

File Edit Operations Definitions Search Project Window Help

CICS SM z/OS CICS DA CICS IA CICS PA CICS CM CICS Transac... IBM Session ... IBM Session ... APA File Manager Fault Analyzer Debug

Configurati Change Pac Search Results Transaction Definitions Program Definitions File Definitions TD Queue Definitions Transaction Definition (SSP) \*Runtime coldstart compar

History z/OS Job

Job ID: JOB06609 Name: CCVJB1A User: DNET409 Status: ACTIVE

JESMSG LG 12013/01/02 12:55 CICS Configuration Manager V2.1 Page 1  
JESJCL Batch Utility  
JESYSMSG  
CCVPRINT  
CCVREPT

CICS Deployment Analysis Report  
Cold Start Compare Report  
Report Options

CONNECT IPADDRESS=DEMOMVS.DEMOPKG.IBM.COM,PORT=6023,SSL=NO  
DEPLOY PHASE=COLLECT,  
REPORTSET=1,  
TYPE=RUNTIME,  
CONFIGURATION=CSDAOR6,  
CONNECTION=AOR6,  
PHASE=COLLECT,  
REPORTSET=2,  
TYPE=CANDIDATES,  
CONFIGURATION=CSDAOR6,  
GRPLIST=LISTAOR6,  
GRPLIST=DFHLIST,  
LOCALSYSID=C22F,  
PHASE=REPORT,  
TYPE=COLDSTARTCOMPARE,  
FILTERDATASET=DNET409.CCV.DAFILTER

12013/01/02 12:55 CICS Configuration Manager V2.1 Page 2  
Batch Utility  
CICS Deployment Analysis Report  
Cold Start Compare Report  
Data Sources

Group List Definit Groups

GEN\* in (CSDAOR6) (6)

GENA  
GENASAD  
GENASAF  
GENASAP  
GENASAT  
GENASA2

```
//CCVJB1A JOB COLDSTCM,NOTIFY=&SYSUID,
//          CLASS=A,MSGCLASS=H,MSGLEVEL=(1,1)
//-----
/* CCVBMAIN - COLD START COMPARE
/*          - RUNTIME: data obtained via CICS
/*          - CANDIDATES: data obtained from both
//-----
//DEPLOY   EXEC PGM=CCVBMAIN
//STEPLIB DD DISP=SHR,DSN=CICSCM.V2R1.SCCVAENU
//          DD DISP=SHR,DSN=CICSCM.V2R1.SCCVAUTH
//CCVPRINT DD SYSOUT=*
//CCVREPT  DD SYSOUT=*          * OUTPUT REPORT
//CCVFLTEX DD SYSOUT=*          * OUTPUT SAMPLE
/*CCVFLTEX DD DSN=DNET409.CCV.DAFILTER,
/*          UNIT=SYSDA,SPACE=(TRK,(10,100),RLSE
/*          LRECL=80,RECFM=FB,BLKSIZE=3200,DSOR
/*          DISP=(,CATLG,CATLG)
//CCVPARMS DD *
CONNECT   IPADDRESS=DEMOMVS.DEMOPKG.IBM.COM,P
DEPLOY    PHASE=COLLECT,
           REPORTSET=1,
           TYPE=RUNTIME,
           CONFIGURATION=CSDAOR6,
           CONNECTION=AOR6,
           PHASE=COLLECT,
           REPORTSET=2,
           TYPE=CANDIDATES,
           CONFIGURATION=CSDAOR6,
           GRPLIST=LISTAOR6,
           GRPLIST=DFHLIST,
           LOCALSYSID=C22F,
           PHASE=REPORT,
           TYPE=COLDSTARTCOMPARE,
           FILTERDATASET=DNET409.CCV.DAFILTER
//
```

Runtime coldstart compare.jcl

Writable Insert 17:4 DemoMVS zOSMF

2:00 PM 1/2/2013



# End of Demonstration Screen Shots