

Changes in Workload License Charges with z196, z114 and zEC12

Al Sherkow
I/S Management Strategies, Ltd.
+1 414 332-3062
al@sherkow.com
<http://www.sherkow.com>
Version 1302B (07FEB2013)

Copyright Notice

Copyright©2013, I/S Management Strategies, Ltd. All rights reserved. No part of this material may be reproduced, distributed, stored in a retrieval system, transmitted, displayed, published or broadcast in any form or by any means, electronic, mechanical, photocopy, recording, or otherwise, without the prior written permission of I/S Management Strategies, Ltd. To obtain written permission please contact I/S Management Strategies, Ltd. Contact information can be obtained by visiting <http://www.sherkow.com>.

SHARE, Inc. is granted this permission.

Trademarks

Product and company names included herein may be trademarks or registered trademarks of their respective holders.

Disclaimer – Best Effort!

- The information and recommendations provided by I/S Management Strategies are technically correct and accurate to the best of our knowledge. Be aware that technical inaccuracies may arise from printing errors or changes or enhancements to hardware or software systems. Be aware that software bills estimated using the IBM software price list or the price list of other vendors is based on publicly available information that may be incorrect or inaccurate due on no part to the efforts of I/S Management Strategies. Any results derived from the use of the seminar, presentation or software should be carefully validated before making any decisions based on these results.

Goals, Plan for the Next 60 Minutes

- Very Quick Sub-Capacity Pricing Overview
- z196 Changes (July 22, 2010)
 - No further HW MSU to SW MSU separation on z196s
 - Advanced Workload License Charges (AWLC)
 - Announced in January 2011, Available with Feb 2nd through March 1st data is Integrated Workload License Charges
 - Published 10 February 2011, Available with Feb 2nd through March 1st data is GSSP reduction for DB2 type 2 connections
- z114 Changes (July 12, 2011)
 - No further HW MSU to SW MSU separation on z114s
 - Advanced Entry Workload License Charges
- zEC12 Changes (Aug 28, 2012)
 - No MSU Separation
 - Technology Update Pricing for AWLC
 - Discounts to AWLC Based on Installed MSUs

Workload License Charges

- Over the Last 30+ Years the Correlation Between MIPS and Software Value Has Been Lost
- LPARs Allow for More Granular Capacities
- Software Must be More Granular Also
- So Now IBM Provides LPAR Based Pricing
 - Is LPAR Pricing Fair?
 - Perhaps Not, but it is Better than Charging for Software Based on the Whole “Machine”

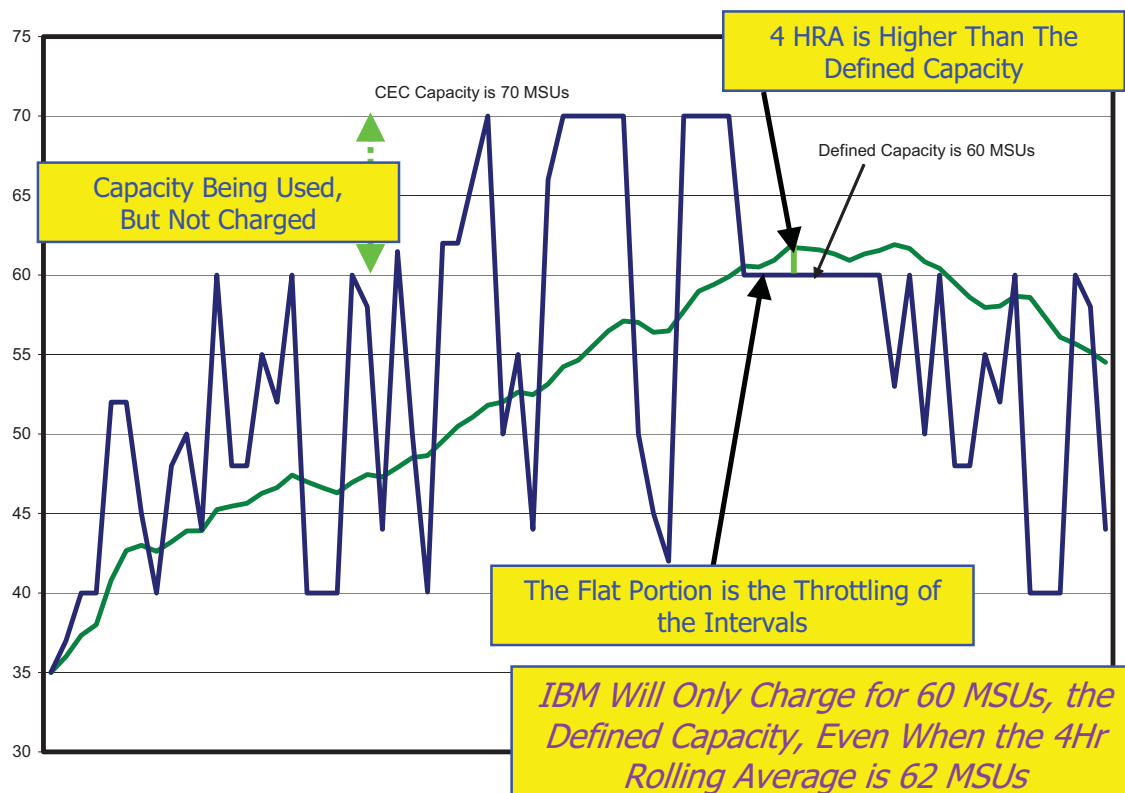
zSeries, z/OS and zWorkload zPricing

Metric	Description	Sub-Capacity Allowed?	Aggregation Allowed?	Qualified Hardware								
				z9BC, z10BC Stand-Alone	z9BC, z10BC in Pricing Plex	z9EC, z10EC Stand-Alone	z9EC, z10EC in Pricing Plex	z114 Stand-Alone	z114 in Pricing Plex	z196 Stand-Alone	z196 in Pricing Plex	
MLC	FLAT	Much Older Fixed MLC			Yes	Yes	Yes	Yes	Yes	Yes	Yes	Yes
MLC	PSLC	Parallel Sysplex License Charge	No	Yes		Yes			Yes	Yes	Yes	Yes
MLC	ULC	S/390 Measured Usage License Charge	No (Pay for actual CPU usage by the product)	Yes		Part of PSLC Sysplex	Part of PSLC Sysplex	Part of PSLC Sysplex		Part of PSLC Sysplex		Part of PSLC Sysplex
MLC	AWLC	Advanced Workload License Charges, Full and Sub-Cap	Yes	Yes					NO	Yes, if All Others z196	Yes	Yes, if all z196
MLC	VWLC	WorkLoad License Charge, Full and Sub-Cap	Yes	Yes	No, Use EWLC	Yes	Yes	Yes	No	No	No	In Transition
MLC	GSSP	Getting Started SubCapacity Pricing	Yes	Yes	Yes	Yes	Yes	Yes	Yes	Yes	Yes	Yes
MLC	IWP	Integrated Workload Pricing	Yes	Yes	No	No	No	No	Yes	Yes	Yes	Yes
MLC	FWLC	WorkLoad License Charge - Fixed Price Per Footprint	Yes	Effectively NO	Yes	Yes	Yes	Yes			Yes	Yes
MLC	EWLC	Entry Workload License Charge	Yes	No	Yes	No, Consider WLC						
MLC	EWLC Full Cap	Entry Workload License Charge		No	OS390 allowed	OS390 allowed						
MLC	AEWLC	Advanced Entry Workload License Charges, Full and Sub-Cap	Yes	No					Yes			
MLC	TWLC	Tiered Workload License Charge		No	Yes				Yes			
MLC	zNALC	System z New Application License Charges	Yes	Yes	Yes	Yes	Yes	Yes	Yes	Yes	Yes	Yes
OTC (\$&S)	Value Unit	Value Unit (Tivoli, Tools, WebSphere App Server, etc.)	Most, Execution, Reference & z/OS Based	Yes	Yes	Yes	Yes	Yes	Yes	Yes	Yes	Yes

©I/S Management Strategies, Ltd., 2013, All Rights of Reproduction Reserved.

SHARE Changes in WLC w/recent Hardware — 7

4-Hour Rolling Average & Defined Capacity



©I/S Management Strategies, Ltd., 2013, All Rights of Reproduction Reserved.

SHARE Changes in WLC w/recent Hardware — 8

z196, z114, zEC12 No Further Separation

- Beginning in August 2003 IBM separated the hardware's ability to run your work, from the "size" of the machine used for software pricing
 - I refer the MSUs calculated from the SRM constant as the "Hardware MSUs" and the MSUs announced for each machine, used for software pricing, as "Software MSUs"
- 1,000 HW MSU Workload Requires Approx.:
 - 1,000 SW MSUs on z900
 - 900 SW MSUs on z990
 - 770 SW MSUs on z9EC
 - 680 SW MSUs on z10EC
 - 680 SW MSUs on z196, zEC12 (YM-WILL-Vary, try zPCR!)
- No further separation on z114, z196 or zEC12

No Further Separation of HW MSUs and SW MSUs

- This is a significant change
- The separation in the past changed how machines were "measured" for IBM & ISVs
 - Depending on your contracts with other Vendors
- AWLC and TUP provide a discount depending on your software stack and "size of your shop"
 - AWLC and TUP have no effect on the software charges you pay to other vendors or for IBM's IPLA Products
- Previous MSU Separation provided a "plateau" or flattening of MSUs while your workload grew to consume the additional separation

Advanced Metrics Only available on z114s & z196s

- The savings is provided through changes in Pricing Tables for sub-capacity eligible MLC products
- Two new tiers are “activated” for AWLC

EWLC & AEWLC Tiers	EWLC	AEWLC	VWLC & AWLC Tiers	VWLC	AWLC
Base, includes 3 MSUs	5,009	4,008	Base, includes 3 MSUs	5,009	5,009
4 - 17 MSUs	71	124	4 - 45 MSUs	270	260
18 - 30 MSUs	258	230	46 - 175 MSUs	126	119
31 - 45 MSUs	400	368	176 - 315 MSUs	94	90
46 - 87 MSUs	126	124	316 - 575 MSUs	71	68
88 - 175 MSUs	126	120	576 - 875 MSUs	53	51
176 - 260 MSUs	94	89	876 - 1315 MSUs	53	49
261 - 315 MSUs	94	89	1316 - 1975 MSUs	53	47
315 + MSUs	94	80	1976 + MSUs	53	47

- My Studies Show There is More Significant Change in Pricing between EWLC and z114's AEWLC
- Note: NO Savings or plateau for IBM IPLA products or ISV products

Technology Upgrade Pricing for AWLC on zEC12

- A reduction in AWLC based on the full-capacity zEC12 MSUs standalone or in a PricingPlex

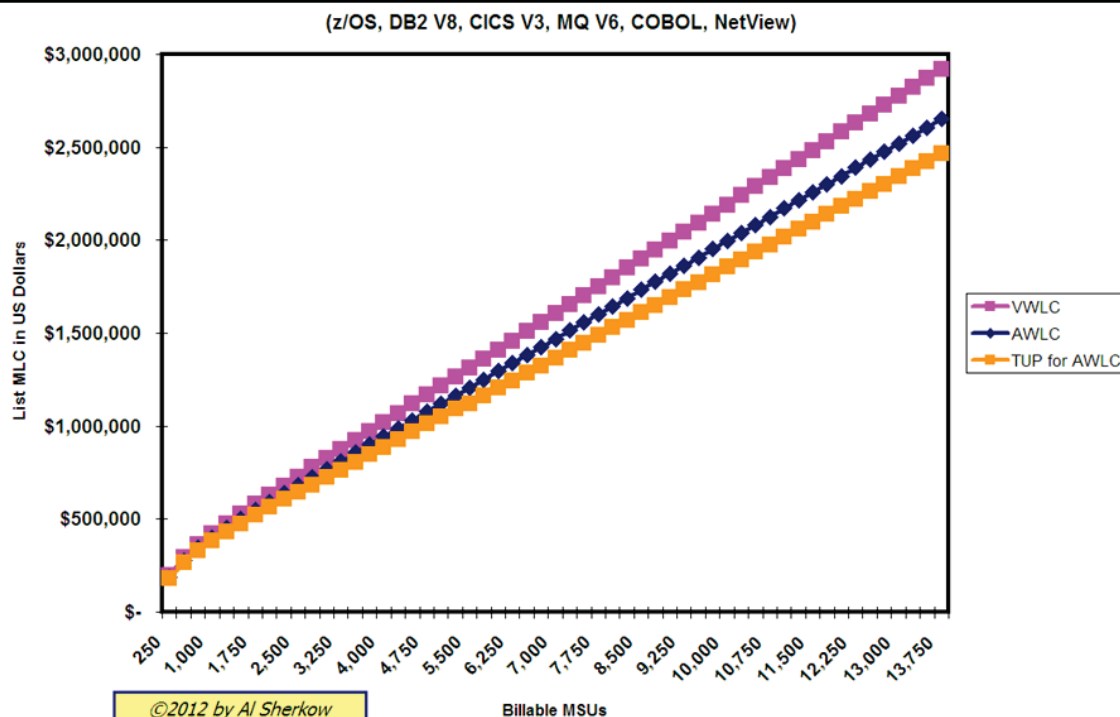
4 - 45 MSUs	2.0%
46 - 315 MSUs	4.0%
316 - 1,315 MSUs	4.5%
1,316 - 2,676 MSUs	5.0%
2,677 - 5,476 MSUs	6.0%
5,477 - more MSUs	7.0%

- The big “news” here for larger sites is the larger tier base.
 - VWLC's last tier begins at 576 (1,976 for z/OS)
 - AWLC's last tier begins at 1,316 (1,976 for z/OS)

The New Pricing Metrics

- Should lower MLC software charges as your move to newer hardware standalone or in a PricingPlex
 - You Must Sign New Contract “Attachments”
- There are transition plans as you migrate through the machine types that provide some portion of the metric’s value while you have mixed hardware technologies in a PricingPlex
- To better understand the value of these metrics study “your” software stack(s) with the different metrics

“Sample” Software Stack Every 750 MSUs



*Remember this chart is for this "sample" software stack,
your charges may be higher or lower*

My New Term: “Virtual” Tiers of Pricing for z/OS Base

5694-A01 S00T4FR z/OS V1 Base	PSLC PERMSU	Early VWLC PERMSU	Current VWLC PERMSU	AWLC PERMSU	TUP 316+ 4.5%	TUP 1,316+ 5.0%	TUP 2,677+ 6.0%	TUP 5,477+ 7.0%
Base Charge 3 MSUs	3,921	3,735	3,921	3,921	3,744.56	3,724.95	3,685.74	3,646.53
4 - 45	865	800	383	368	351.44	349.60	345.92	342.24
46 - 175	277	255	320	301	287.46	285.95	282.94	279.93
176 - 315	207	110	226	216	206.28	205.20	203.04	200.88
316 - 575	159	110	120	115	109.83	109.25	108.10	106.95
576 - 875	159	85	93	88	84.04	83.60	82.72	81.84
876 - 1,315	159	60	65	62	59.21	58.90	58.28	57.66
1,316 - 1,975	159	45	49	47	44.89	44.65	44.18	43.71
1,976 - 99,999,992	159	36	39	38	36.29	36.10	35.72	35.34

- The light blue columns are additional levels of discounting not available previously

“Virtual” Tiers for Sub-Capacity Products

5605-DB2 S015SW2 DB2 V10	PSLC PERMSU	Early VWLC PERMSU	Current VWLC PERMSU	AWLC PERMSU	TUP 316+ 4.5%	TUP 1,316+ 5.0%	TUP 2,677+ 6.0%	TUP 5,477+ 7.0%
Base Charge 3 MSUs	5,560	N/A	5,259	5,259	5,022.35	4,996.05	4,943.46	4,890.87
4 - 45	300	N/A	292	281	268.36	266.95	264.14	261.33
46 - 175	127	N/A	145	137	130.84	130.15	128.78	127.41
176 - 315	95	N/A	108	104	99.32	98.80	97.76	96.72
316 - 575	71	N/A	82	78	74.49	74.10	73.32	72.54
576 - 875	71	N/A	61	59	56.35	56.05	55.46	54.87
876 - 1,315	71	N/A	61	56	53.48	53.20	52.64	52.08
1,316 - 1,975	71	N/A	61	54	51.57	51.30	50.76	50.22
1,976 - 99,999,992	71	N/A	61	54	51.57	51.30	50.76	50.22

- DB2 V10 in this example
- The green is highlighting tiers that are not being used in each column
- The light blue columns are additional levels of discounting not available previously

- **Integrated Workload Pricing (IWP) in 2011**
 - 4 Hour Rolling Average MSUs of some WebSphere products are Subtracted From the LPAR's Full 4 Hour Rolling Average MSUs before computing Simultaneous 4 Hour Rolling Averages for CICS and IMS
 - This is 4HRA of some WebSphere product's actual CPU time is subtracted from the LPAR's (the container's) 4HRA
 - Provides less incremental MLC software increase when adding WebSphere products into existing LPARs
 - ***Reducing a "barrier" to further use of WebSphere products on z***
 - May help current customers also

Wearing My "analyst" Hat: IWP

- **IBM would like more sites to use WebSphere products on z**
 - Evidence: "Getting Started Sub-Capacity Pricing" for WebSphere Products from 2008, revised in April 2009
 - Sites choose building new LPARs for WebSphere or adding WebSphere to current LPARs
 - Pros and Cons both technically and culturally
- **IWP removes the actual 4HRA of Some WebSphere Products from the 4HRA of IMS and CICS in WebSphere LPARs**
 - So If you add WebSphere to an existing LPAR the 4HRA of z/OS, DB2, MQSeries and other products probably increases as WebSphere grows in the container. CICS and IMS should not have the same 4HRA increase due to IWP
 - Disconnects WebSphere Products from IMS/CICS MSUs

IWP Requirements

Unique Machine Identifier: 2817#RRRR

z196 Machine: Pass

IWP Control Statement: YES

LPARNAME	LPAR Has APAR OA31615	LPAR Has z/OS 1.10 or Later	LPAR Has IWP Defining Programs	LPAR Has IWP Adjusting Programs
TST1	Fail	Pass	Yes	Yes
PRDD	Mixed	Pass	Yes	Yes
PRDM	Mixed	Pass	Yes	Yes
PRDS	Fail	Pass	No	No

IWP Highest Simultaneous 4HRA Before & After

Unique Machine Identifier: 2817#RRRR

Product ID: 5655-M15 CICS TS V3

Timestamp Before IWP	Original Simult'n's 4HRA	Timestamp After IWP	IWP Simult'n's 4HRA	MSUs Saved With IWP
03FEB2011:12	1193	05FEB2011:02	979	214
03FEB2011:13	1186	05FEB2011:03	970	216
23FEB2011:13	1147	12FEB2011:00	899	248
23FEB2011:12	1139	05FEB2011:01	878	261
07FEB2011:13	1134	11FEB2011:23	875	259
08FEB2011:12	1133	25FEB2011:23	854	279

- “manufactured” test data for this example
- IWP reduces CICS Charges by changing the billable MSUs from 1,193 to 979, a savings of 214 MSUs
 - In This Range with AWLC CICS is 51USD/MSU savings \$10,914/mo
- How is that peak hour 979 MSUs determined?

IWP Math by LPAR by Hour

Start of the Hour	LPAR	IWP Defining Products				Total Subtrac- tions	LPAR IWP 4HRA
		LPAR Orig 4HRA	5655-M74 Subtract Product 4HRA MSUs	5655-N02 Subtract Product 4HRA MSUs			
03FEB11:12	TST1	5		0.0	0	5	
	PRDD	907	0.1	298.9	299	608	
	PRDM	286	0.1	218.7	219	67	

03FEB11:12		1198	0.2	517.6	518	680	
05FEB11:02	TST1	4		0.0	0	4	
	PRDD	527	0.1	28.2	28	499	
	PRDM	483	0.0	2.9	3	480	

05FEB11:02		1014	0.1	31.2	31	983	

- Highest original hour was 1,193. TST1 was not running CICS during the hour
- IWP Highest hour also did not have CICS in TST1, resulting in 979 MSUs

IWP Review

- IWP may help IBM with new deployments of WAS, Processor Server, Message Broker, Enterprise Service Bus and other WebSphere Products on z
- ***You may already have these configurations in your shop and IWP may reduce your CICS and IMS monthly charges***
- If your site meets all the requirements including the hardware you can use SCRT to study the potential
- Before you satisfy the requirements there is only one tool I'm aware of that can do the analysis ...

WebSphere Products With DB2 type 2 Connectors

- SCRT V19.2.0 User Guide: “SCRT subtracts the four-hour rolling average utilization of the DB2 time, which is used by the GSSP eligible product via the DB2 type 2 connector, from that GSSP product”
 - This further reduces the GSSP product’s billable MSUs, but does not change DB2

WebSphere Products With DB2 type 2 Connectors

- This enhancement in SCRT V19.2.0 was not “announced”, it was published in the SCRT User Guide
- z/OS 1.10+ and SMF APAR OA31615 are required (but not a z196)
- DB2 APARs and other requirements are in the SCRT V19.2.0 User Guide
- *GSSP is already **automatically** computed by SCRT and when the requirements for this enhancement are met*

- If this applies at your shop there is an interesting twist:
 - The GSSP MSUs if you have DB2 type 2 Connectors for WAS, Process Server, Msg Broker or Enterprise Service Bus are

SMALLER

Than the IWP MSUs for the same products. IWP does not subtract the DB2 type 2 connector CPU time

One More Page on IWP

- Once your site has met all the requirements of IWP and if you have the IWP Defining Programs (products) in LPARs with CICS and IMS then IWP will not raise your software charges and IWP may lower your software charges
- However from the announcement letter “Your agreement to IWP terms and conditions is required for the receipt of IWP benefits.”
 - The Addendum for Integrated Workload Pricing to Attachment for IBM System z Advanced Workload License Charges (Z125-8702)

Are the Number of IBM Audits Increasing?

- **Parallel Sysplex Audits**

- For PricingPlex Validation
 - i.e. IBM is auditing that multiple machine aggregation is satisfying their rules
- Requires the Customer to Use IBM's PlexCalc tool

- **Software Usage Audits**

- May Install a Tivoli Audit Tool (based on Isogon's Softaudit)
- May Required Your SMF Data for SCRT verification
- Stopped accepting Standard Month SCRT input
 - i.e. You Must Include the 1st of the Month
- IBM has even questioned a site's NO89 parameters, insisting for example is COBOL must be charged based on the entire machine

- **Can You Share Your Experience?**

What Are the Size Limits of an LPAR?

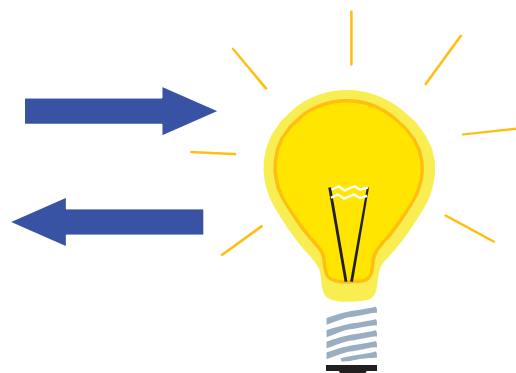
1. The "True Limit on Capacity" is the number of Logical Engines allocated to the LPAR Running at 100% Busy
2. Relative weight (now initial processing weight) is only a factor when contention exists for CP resource
3. Defined Capacity sets the limit that the rolling 4-hour average is held to by WLM
4. IRD Clusters, The Cluster Shares the Weight
 - Distributed Within the Cluster on Initial Processing Weight
 - Cluster Members Must Be on the Same Machine & on the Same Sysplex
5. LPAR Group Capacity Limits
 - MSU limit for a Group of LPARs on a Single Machine

What Are LPAR "Sizes" for WLC?

1. SCRT's "Highest" MSUs from Section N5: Detail LPAR Data
2. SCRT's Group MSUs for z/OS from Section P5 "Product Max Contributors"
3. The LPAR's 4HRA as reduced by WebSphere Products for IWP

Discussion, Questions?

Session Evaluations: 12997



Al Sherkow
I/S Management Strategies, Ltd.
Consulting Expertise on Workload License Charges,
and LPARs
Seminars on IBM SW Pricing
al@sherkow.com
+1 414 332-3062
www.sherkow.com