

CA Chorus™ Software Manager v5.1 Hands-on Lab

Summer Spaulding & Chris Culver
CA Technologies

Thursday, February 7, 2013 12:15 PM
Session **12755**



abstract

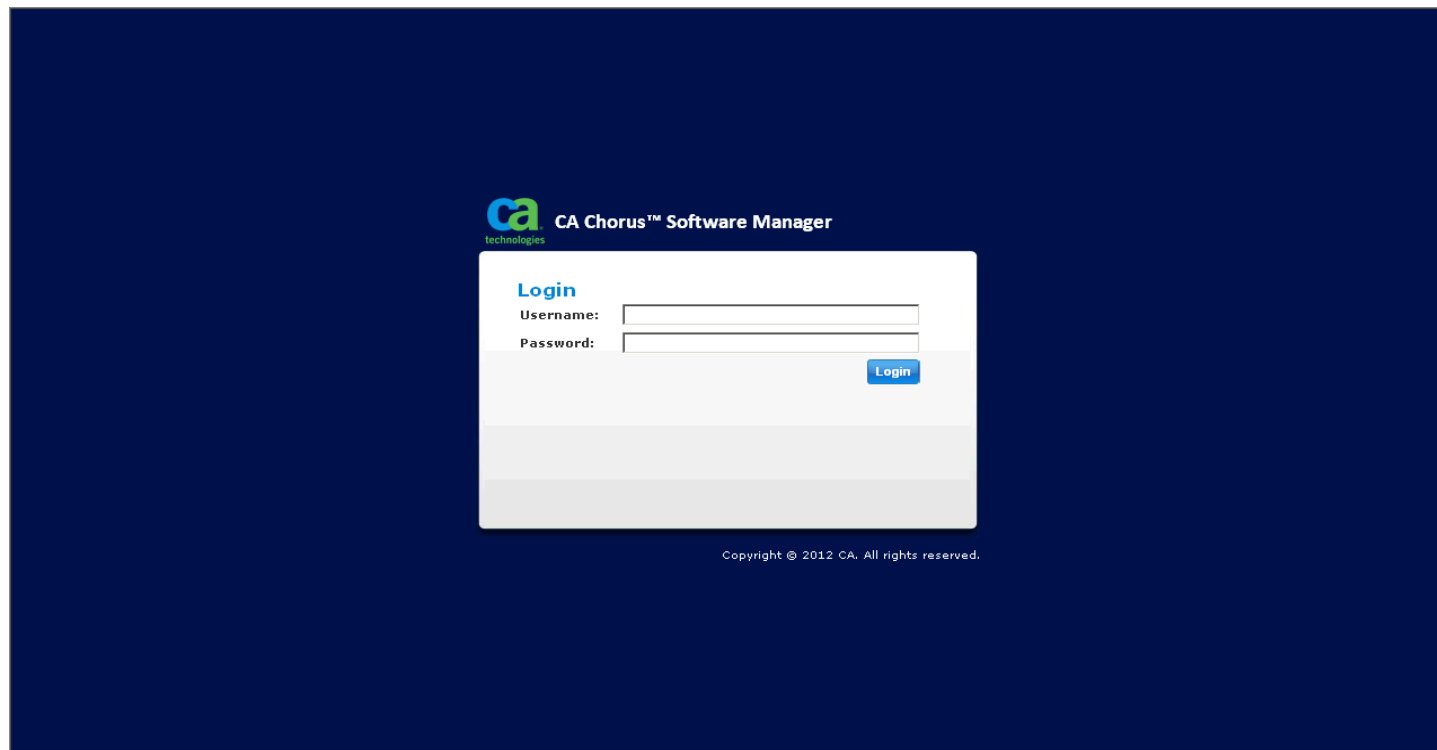
- CA Chorus™ Software Manager (CA CSM) allows products and maintenance to be downloaded, installed, deployed, and configured via a web browser. It is available at no additional charge to CA customers with any licensed z/OS product.
- In this hands-on lab session you will learn the basics of CA CSM and will install a mainframe product yourself using the CA CSM V5.1 GUI. Experts will be on hand to answer questions and assist along the way.

Lab Exercise

- Login to CA CSM UI
- Navigate to Products Tab
- Install selected product from Available Products List
- Review Installation from SMPE Environment
- **Optional (Depending on Time)** Install maintenance to product/release using CA Recommended Service

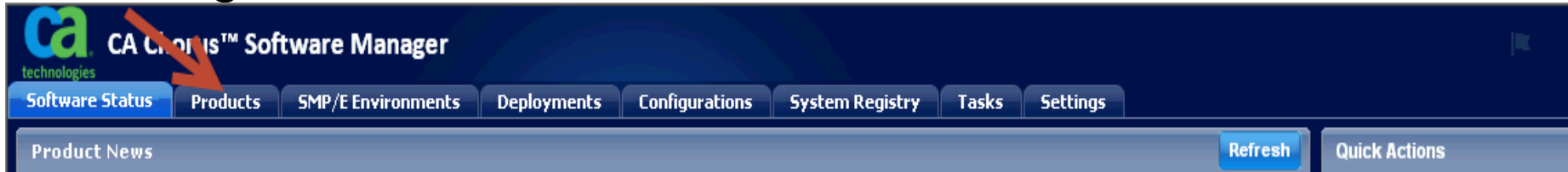
Login to CSM

- Workstation is connected to CA VPN
- CSM System and Credentials have been provided at each workstation
- Login to CA CSM UI using ICON on Desktop

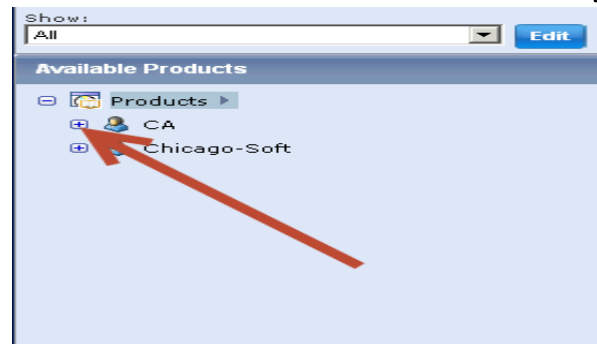


Install Selected Product/Release

- Navigate to Products Tab



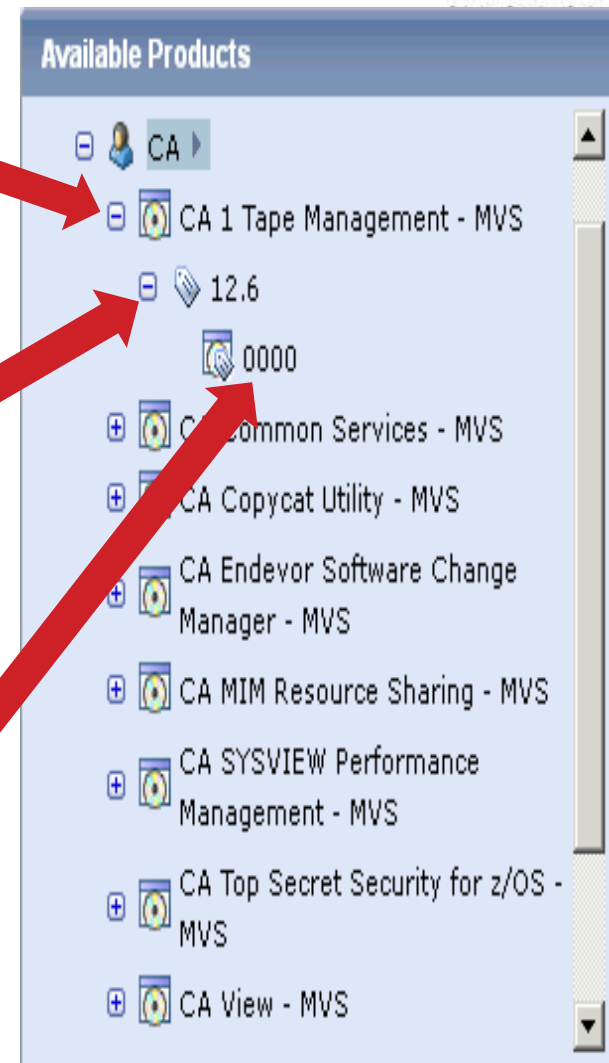
- Expand the Product List under CA Vendor by selecting + next to CA



- Pick a product from Available Products List to install by expanding + next to product Name
- Once Installed, Install maintenance to product using CA Recommended Service

Install Selected Product/Release

- Pick a product from Available Products List to install by selecting + next to product Name
- Expose the GENLVL by selecting the + next to the release number
- Select the GENLVL to display all of the product package files associated with this release – this list will include all product files you may need for this product



Install Selected Product/Release

0000

Products > CA > CA 1 Tape Management - MVS > 12.6 > 0000

Base Install Packages Add External Package

Show: All

Select and: [Download](#)

Select	Name	Last Modified	Type	Download Status	Size	Release / Gen Level	Actions
<input type="checkbox"/>	CA Vantage Storage Resource Manager 12.7 Windows Client - CDCA Graphical Management Interf	Oct 18, 2012	N/A	No	482 MB	N/A/N/A	No action
<input type="checkbox"/>	CA 1 PRODUCT PACKAGE	Jun 15, 2011	Base Install	Yes	3 MB	12.6/0000	Actions
<input type="checkbox"/>	CA EASYTRIEVE PRODUCT PACKAGE	Jul 5, 2011	Base Install	Yes	6 MB	11.6/0000	Actions
<input type="checkbox"/>	CA VANTAGE SRM PRODUCT PACKAGE	May 27, 2011	Base Install	Yes	19 MB	12.6/0000	Actions
<input type="checkbox"/>	DATACOM/AD XPRESS INSTALL	Sep 11, 2012	Base Install	Yes	48 MB	14.0/0000	Actions
<input type="checkbox"/>	CA-1 PRODUCT INFORMATION PCKT	Jul 12, 2011	PDF	Yes	183 kB	12.6/0000	Actions
<input type="checkbox"/>	DATACOM/AD PROD INFO PACKET	Jun 1, 2012	PDF	Yes	220 kB	14.0/0000	Actions
<input type="checkbox"/>	LTR, VANTAGE GUI LETTER	Sep 6, 2011	PDF	Yes	431 kB	12.6/0000	Actions

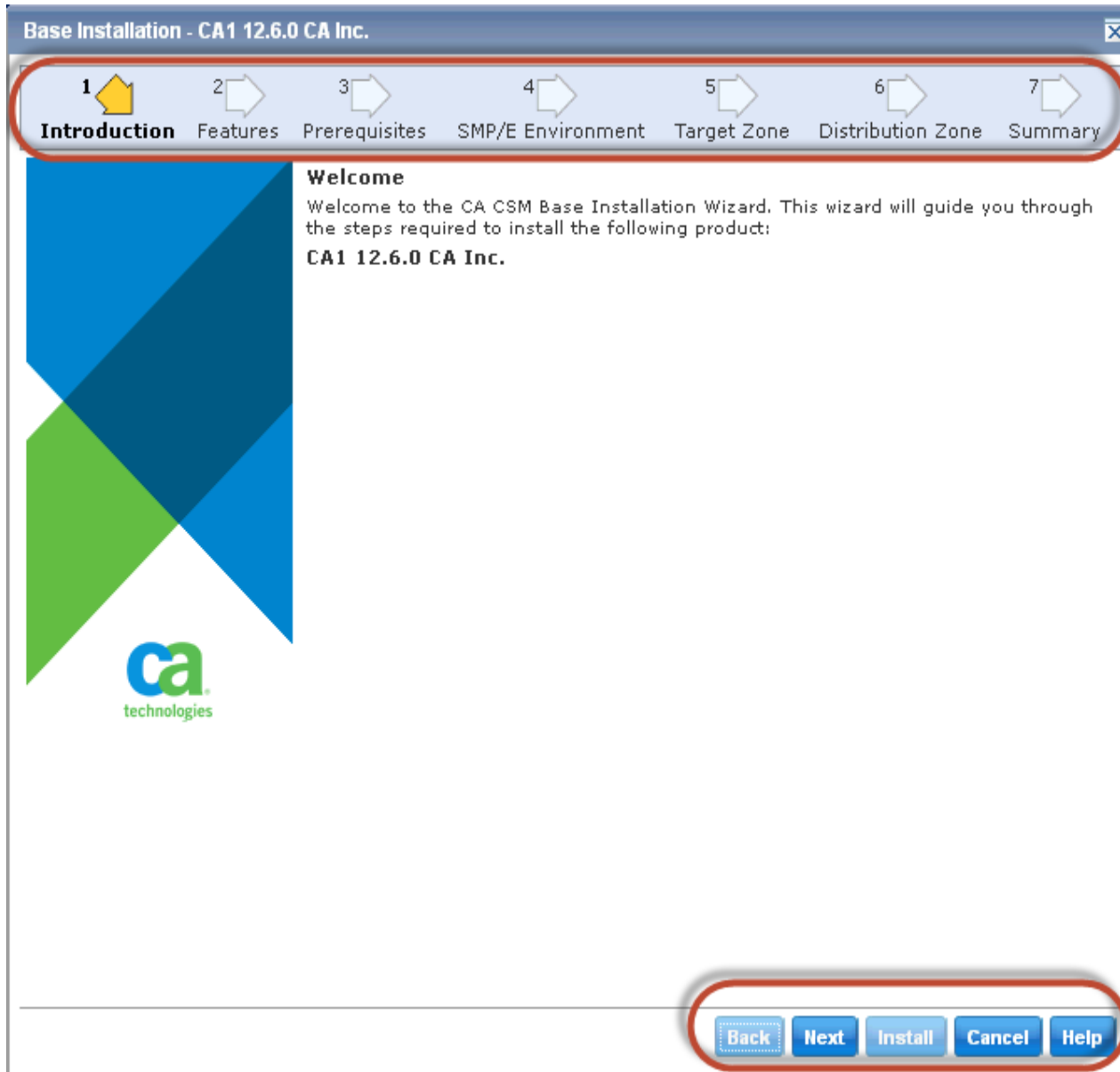
Selected 0 of 8.

- Sort the list of product files by TYPE to group all Base Install files.
- Identify the appropriate package name for your product release
- Select the Actions and then Install to begin the Base Installation process.

Base Install Wizard



- CSM initiates task (foreground) to unpackage the product file in preparation for installation
 - Time it takes to unpackage will vary by package and depend on package size and system resources
- Install Wizard displayed when foreground process completes (see next page)
 - Notice the top portion of the Wizard provides steps involved
 - Notice at the bottom the wizard navigation options
 - If an option is not “enabled” it indicates there is missing information that is preventing moving forward
- Use Online Help as needed



Some products will include README information on this panel. It will be displayed as a link on the Introduction panel.

Make sure you review if present for important information regarding installation

Base Installation - CA1 12.6.0 CA Inc. [X]

1 Introduction 2 **Features** 3 Prerequisites 4 SMP/E Environment 5 Target Zone 6 Distribution Zone 7 Summary

Installation Type Selection

Installation types represent sets of predefined product features.

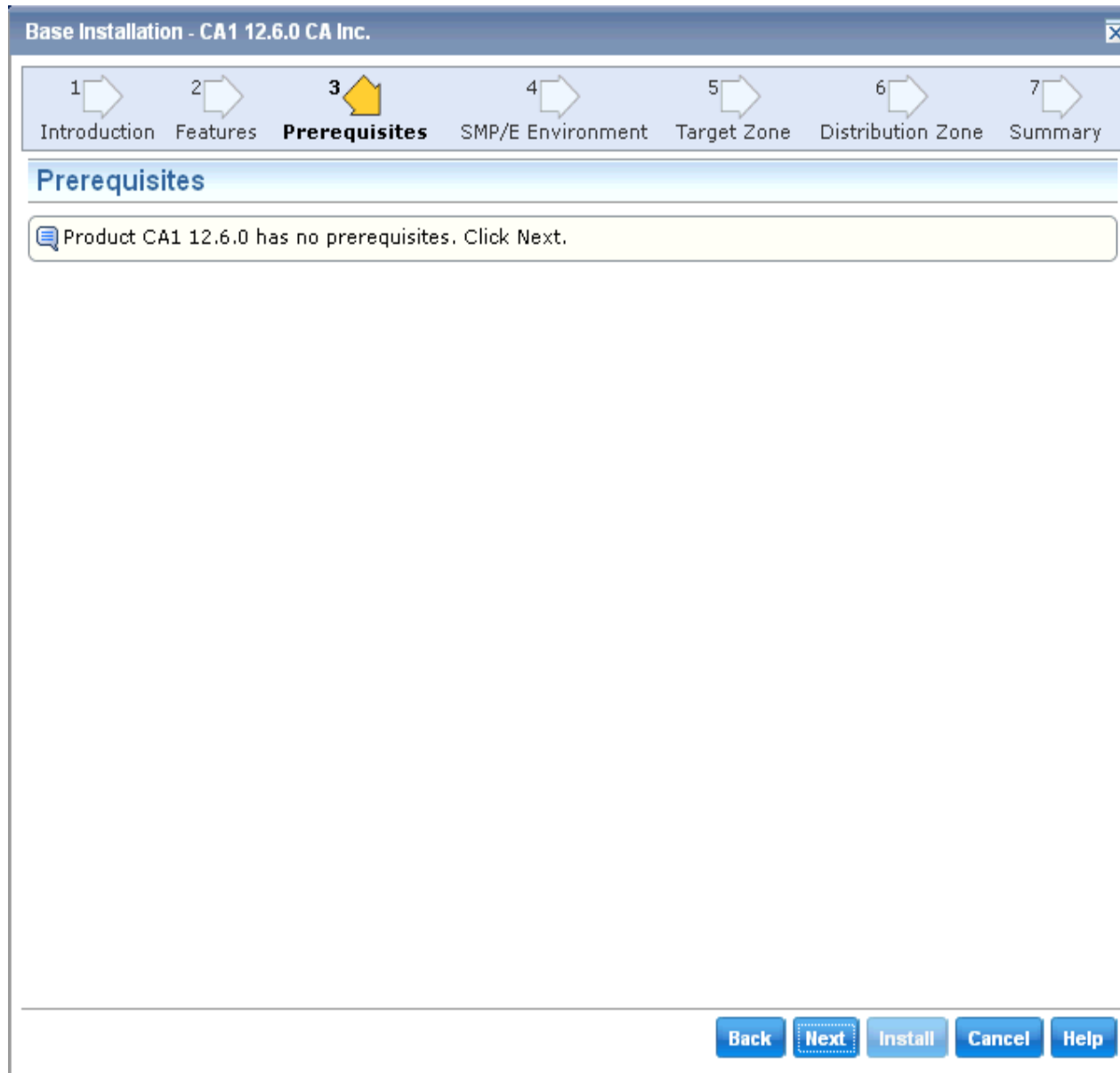
Installation Types	
Select	Installation Types
<input checked="" type="radio"/>	Full Install
<input type="radio"/>	Custom Installation

Full Install:
This will install CA 1 Tape Management System

Back Next Install Cancel Help

Depending on the product/release, there may be multiple feature options to select from

Use Customer Installation to select specific FMIDs



**Feature enabled
with CSM v5.1**

**Products teams
will define in
package metadata**

**Currently CHORUS
v3.0 is only
product exploiting
this feature**

Base Installation - CA1 12.6.0 CA Inc.

1 Introduction 2 Features 3 Prerequisites **4 SMP/E Environment (1/3)** 5 Target Zone 6 Distribution Zone 7 Summary

Target SMP/E Environment Selection

This step lets you select an SMP/E environment where the selected product features should be installed. You can either select an existing SMP/E environment from your working set, or create a new SMP/E environment.

SMP/E Environments

Select SMP/E Environments

☒ [Create a New SMP/E Environment](#)

Create a New SMP/E Environment:
This option lets you create and set up a new SMP/E environment to install the product to.

Back Next Install Cancel Help

**Determine what
CSI Environment
to use for Install**

**CSM will only list
existing CSIs that
is in its inventory
and is selected in a
User's CSI
Working Set**

Use default for lab

Base Installation - CA1 12.6.0 CA Inc.

1 Introduction 2 Features 3 Prerequisites **4 SMP/E Environment (2/3)** 5 Target Zone 6 Distribution Zone 7 Summary

Target SMP/E Environment Setup

This step lets you set up parameters for the new SMP/E environment and all SMP/E data sets that are related to it. Data set allocation parameters are used for both the SMP/E environment and all SMP/E data sets.

SMP/E Environment Name and CSI VSAM Parameters

SMP/E Environment Name*: TEST1 CA1

Data Set Name Prefix*: TEST1.CA1.R126 .CSI

Catalog:

Cross-Region: 2

Cross-System: 3

SMP/E Data Sets Allocation Parameters

High-Level Qualifier*: TEST1.CA1.R126

DSN Type: LIBRARY

☐ SMS Parameters ☒ Data Set Parameters

Storage Class: VOLSER: TS021R

Management Class: Unit*: 3390

Data Class: Catalog: YES

Back Next Install Cancel Help

**Fill in the Fields
using parameters
provided at
workstation**


**Use assigned
userid in Name
and HLQ of
Datasets**

**All Required fields
are indicated with
an "*" at end of
field name**

Base Installation - CA1 12.6.0 CA Inc. X


1 Introduction 2 Features 3 Prerequisites **4 SMP/E Environment (3/3)** 5 Target Zone 6 Distribution Zone 7 Summary

Target SMP/E Environment Parameters

 This step lets you enter additional parameters necessary to set up the target SMP/E environment and optionally override the allocation parameters of SMP/E data sets.

Work DDDEF Parameters

Use SMS ☐ Use Unit ☒

Storage Class*: Unit*: 

Management Class:

Data Class:

Data Sets

Name	Data Set Name	Action
SMPLOG	TEST1.CA1.R126.SMPLOG	Override
SMPLOGA	TEST1.CA1.R126.SMPLOGA	Override
SMPPTS	TEST1.CA1.R126.SMPPTS	Override

Provides ability to designate allocation parameters for Work DDDEFs

Use Defaults

List of Datasets for Global Zone are listed with DSN that will be used. Use can use Override link to customize further

Base Installation - CA1 12.6.0 CA Inc. [X]

1 Introduction 2 Features 3 Prerequisites 4 SMP/E Environment (3/3) **5 Target Zone (1/3)** 6 Distribution Zone 7 Summary

Target Zone Selection

This step lets you select the Target zone where the selected product features should be installed.

Target Zones	
Select	Target Zones
<input checked="" type="radio"/>	Create a New Target Zone

Create a New Target Zone:
Select this option to create and set up a new Target zone to be used by this product.

Back Next Install Cancel Help

Since you are installing into a new CSI environment, only option is to create a new Target Zone

Base Installation - CA1 12.6.0 CA Inc.

1 Introduction 2 Features 3 Prerequisites 4 SMP/E Environment (3/3) **5 Target Zone (2/3)** 6 Distribution Zone 7 Summary

Target Zone Setup

This step lets you set up parameters for the new Target zone and all Target libraries that are related to it.

Target Zone Name and CSI VSAM Parameters

Target Zone Name*: CA10

☐ Create New CSI Data Set

Data Set Name Prefix: TEST1.CA1.R126 .CSI

Catalog:

Cross-Region: 2

Cross-System: 3

Target Libraries Allocation Parameters

High-Level Qualifier*: TEST1.CA1.R126

DSN Type: LIBRARY

☐ SMS Parameters ☒ Data Set Parameters

Storage Class: VOLSER: TS021R

Management Class: Unit*: 3390

Data Class: Catalog: YES

Back Next Install Cancel Help

Notice that parameters specified for Global Zone are carried forward to Target Zone definition

Make adjusts as desired or use defaults

Base Installation - CA1 12.6.0 CA Inc.

1 2 3 4 5 6 7

Introduction Features Prerequisites SMP/E Environment (3/3) **Target Zone (3/3)** Distribution Zone Summary

Target Zone Parameters

This step lets you enter additional parameters necessary to set up the Target zone and optionally override the allocation parameters of Target libraries.

Target Zone Parameters

Name	Data Set Name	Action
SMPLTS	TEST1.CA1.R126.SMPLTS	Override
SMPMTS	TEST1.CA1.R126.SMPMTS	Override
SMPSCDS	TEST1.CA1.R126.SMPSCDS	Override
SMPSTS	TEST1.CA1.R126.SMPSTS	Override
CTAPCLS0	TEST1.CA1.R126.CTAPCLS0	Override
CTAPEARL	TEST1.CA1.R126.CTAPEARL	Override
CTAPECPB	TEST1.CA1.R126.CTAPECPB	Override
CTAPEVNT	TEST1.CA1.R126.CTAPEVNT	Override
CTAPEXEC	TEST1.CA1.R126.CTAPEXEC	Override
CTAPEZTM	TEST1.CA1.R126.CTAPEZTM	Override
CTAPEZTR	TEST1.CA1.R126.CTAPEZTR	Override
CTAPJCL	TEST1.CA1.R126.CTAPJCL	Override
CTAPLINK	TEST1.CA1.R126.CTAPLINK	Override
CTAPMAC	TEST1.CA1.R126.CTAPMAC	Override
CTAPMENU	TEST1.CA1.R126.CTAPMENU	Override
CTAPOPTN	TEST1.CA1.R126.CTAPOPTN	Override
CTAPPENU	TEST1.CA1.R126.CTAPPENU	Override

Back Next Install Cancel Help

List of Datasets for Target Zone are listed with DSN that will be used. Use can use Override link to customize further

If your product requires any additional references to external Datasets or USS paths, you will be prompted to enter at top of this panel

Base Installation - CA1 12.6.0 CA Inc.

1
2
3
4
5
6
7

Introduction
Features
Prerequisites
SMP/E Environment (3/3)
Target Zone (3/3)
Distribution Zone (1/3)
Summary

Distribution Zone Selection

This step lets you select the Distribution zone where the selected product features should be installed.

Distribution Zones

Select	Distribution Zones
<input checked="" type="radio"/>	Create a New Distribution Zone

Create a New Distribution Zone:
Select this option to create and set up a new Distribution zone to be used by this product.

Back
Next
Install
Cancel
Help

Since you are installing into a new CSI environment, only option is to create a new Distribution Zone

Base Installation - CA1 12.6.0 CA Inc.

1 Introduction 2 Features 3 Prerequisites 4 SMP/E Environment (3/3) 5 Target Zone (3/3) 6 **Distribution Zone (2/3)** 7 Summary

Distribution Zone Setup

This step lets you set up parameters for the new Distribution zone and all Distribution libraries that are related to it.

Distribution Zone Name and CSI VSAM Parameters

Distribution Zone Name*: CAID0

☐ Create New CSI Data Set

Data Set Name Prefix: TEST1.CA1.R126 .CSI

Catalog:

Cross-Region: 2

Cross-System: 3

Distribution Libraries Allocation Parameters

High-Level Qualifier*: TEST1.CA1.R126

DSN Type: LIBRARY

☐ SMS Parameters ☒ Data Set Parameters

Storage Class: VOLSER: TS021R

Management Class: Unit*: 3390

Data Class: Catalog: YES

Back Next Install Cancel Help

Notice that parameters specified for Global Zone are carried forward to Distribution Zone definition

Make adjusts as desired or use defaults

Base Installation - CA1 12.6.0 CA Inc. [X]

1 Introduction 2 Features 3 Prerequisites 4 SMP/E Environment (3/3) 5 Target Zone (3/3) 6 **Distribution Zone (3/3)** 7 Summary

Distribution Zone Parameters

This step lets you enter additional parameters necessary to set up the Distribution zone and optionally override the allocation parameters of Distribution libraries.

Distribution Zone Parameters

Name	Data Set Name	Action
AAG8MOD0	TEST1.CA1.R126.AAG8MOD0	Override
AAL0CLS0	TEST1.CA1.R126.AAL0CLS0	Override
AAL0EARL	TEST1.CA1.R126.AAL0EARL	Override
AAL0ECPB	TEST1.CA1.R126.AAL0ECPB	Override
AAL0EVNT	TEST1.CA1.R126.AAL0EVNT	Override
AAL0EXEC	TEST1.CA1.R126.AAL0EXEC	Override
AAL0EZTM	TEST1.CA1.R126.AAL0EZTM	Override
AAL0EZTR	TEST1.CA1.R126.AAL0EZTR	Override
AAL0JCL	TEST1.CA1.R126.AAL0JCL	Override
AAL0MAC	TEST1.CA1.R126.AAL0MAC	Override
AAL0MENU	TEST1.CA1.R126.AAL0MENU	Override
AAL0MOD0	TEST1.CA1.R126.AAL0MOD0	Override
AAL0OPTN	TEST1.CA1.R126.AAL0OPTN	Override
AAL0PENU	TEST1.CA1.R126.AAL0PENU	Override
AAL0PROC	TEST1.CA1.R126.AAL0PROC	Override
AAL0SAMP	TEST1.CA1.R126.AAL0SAMP	Override
AAL0SRC	TEST1.CA1.R126.AAL0SRC	Override

Back Next Install Cancel Help

List of Datasets for Distribution Zone are listed with DSN that will be used.

Use can use Override link to customize further

Base Installation - CA1 12.6.0 CA Inc.

1 Introduction 2 Features 3 Prerequisites 4 SMP/E Environment (3/3) 5 Target Zone (3/3) 6 Distribution Zone (3/3) 7 **Summary**

Summary

Installation Information
Selected Installation Type:
Full Install - CA 1 Full Install

SMP/E Environment
Selected SMP/E Environment:
Create a New SMP/E Environment - A new SMP/E environment will be created for this installation.

SMP/E Environment Name and CSI VSAM Parameters
SMP/E Environment Name: TEST1.CA1
Data Set Name: TEST1.CA1.R126.CSI
Data Sets Prefix: TEST1.CA1.R126

Target Zone
Selected Target Zone:
Create a New Target Zone - A new Target zone will be created for this installation.

Target Zone Name and CSI VSAM Parameters
Target Zone Name: CAIT0
Data Set Name: TEST1.CA1.R126.CSI
Data Sets Prefix: TEST1.CA1.R126

Distribution Zone
Selected Distribution Zone:
Create a New Distribution Zone - A new Distribution zone will be created for this installation.

Distribution Zone Name and CSI VSAM Parameters
Distribution Zone Name: CAID0
Data Set Name: TEST1.CA1.R126.CSI
Data Sets Prefix: TEST1.CA1.R126

Global Zone Data Sets and Allocation Parameters
Data Set Name: TEST1.CA1.R126.SMPLOG
ALLOC NEW CATALOG DSN(TEST1.CA1.R126.SMPLOG) CYLINDERS SPACE(5,5) LRECL(510) BLKSIZE(0) RECFM(V,B)
UNIT(3390) VOL(TSO21R)

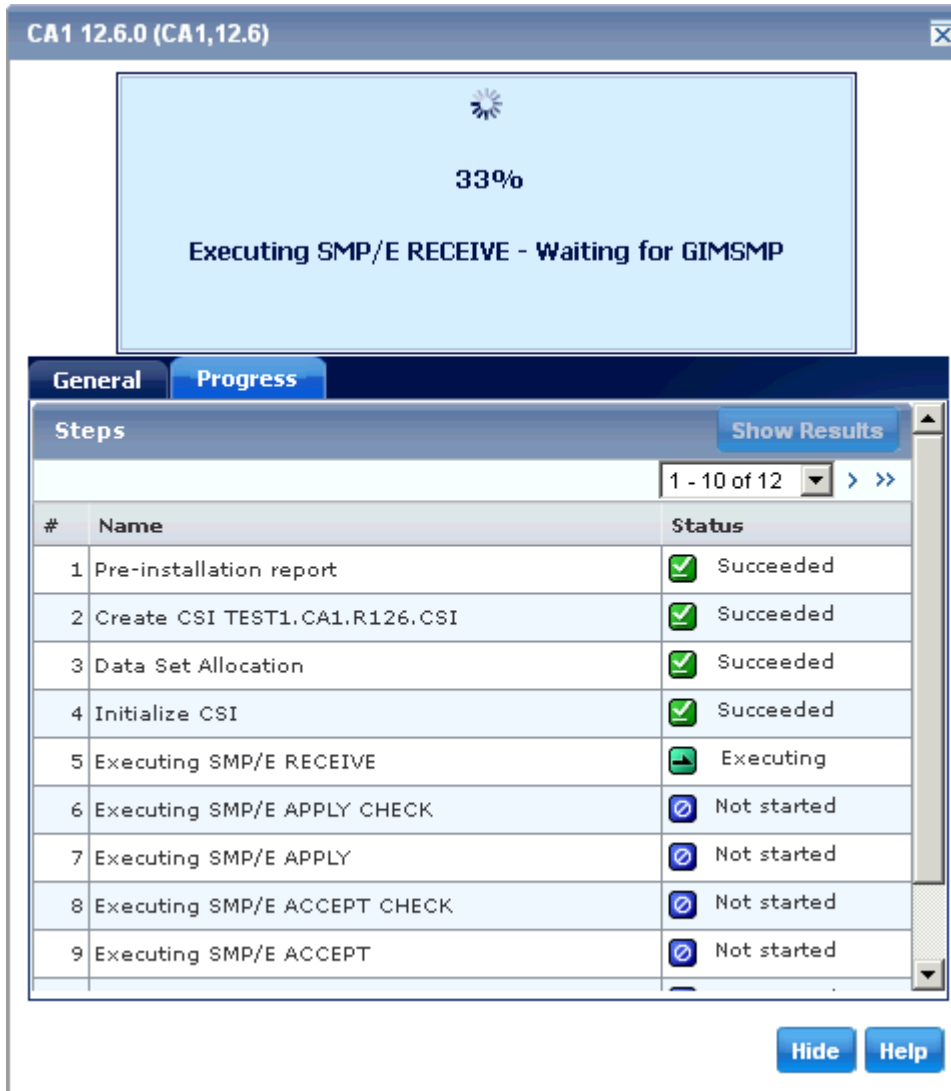
Back Next Install Cancel Help

A Summary of the selections are presented.

Review the summary for accuracy. Use Back navigation option to make changes

When selection are verified, Select **INSTALL** on navigation options to initiate Install Task

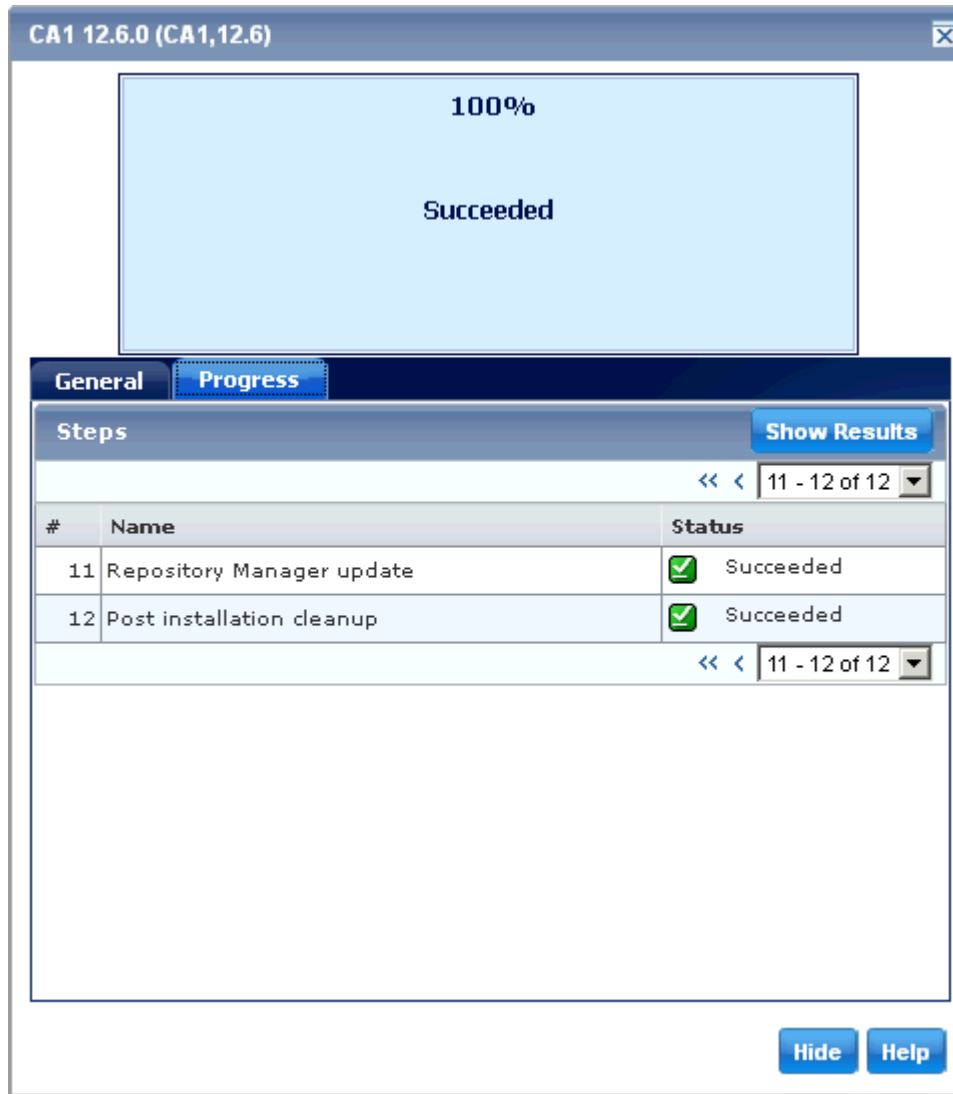
Base Install Task Dialog



Select Progress Tab to display Step Execution Details

Notice Messages at top of wizard changing as activities progress

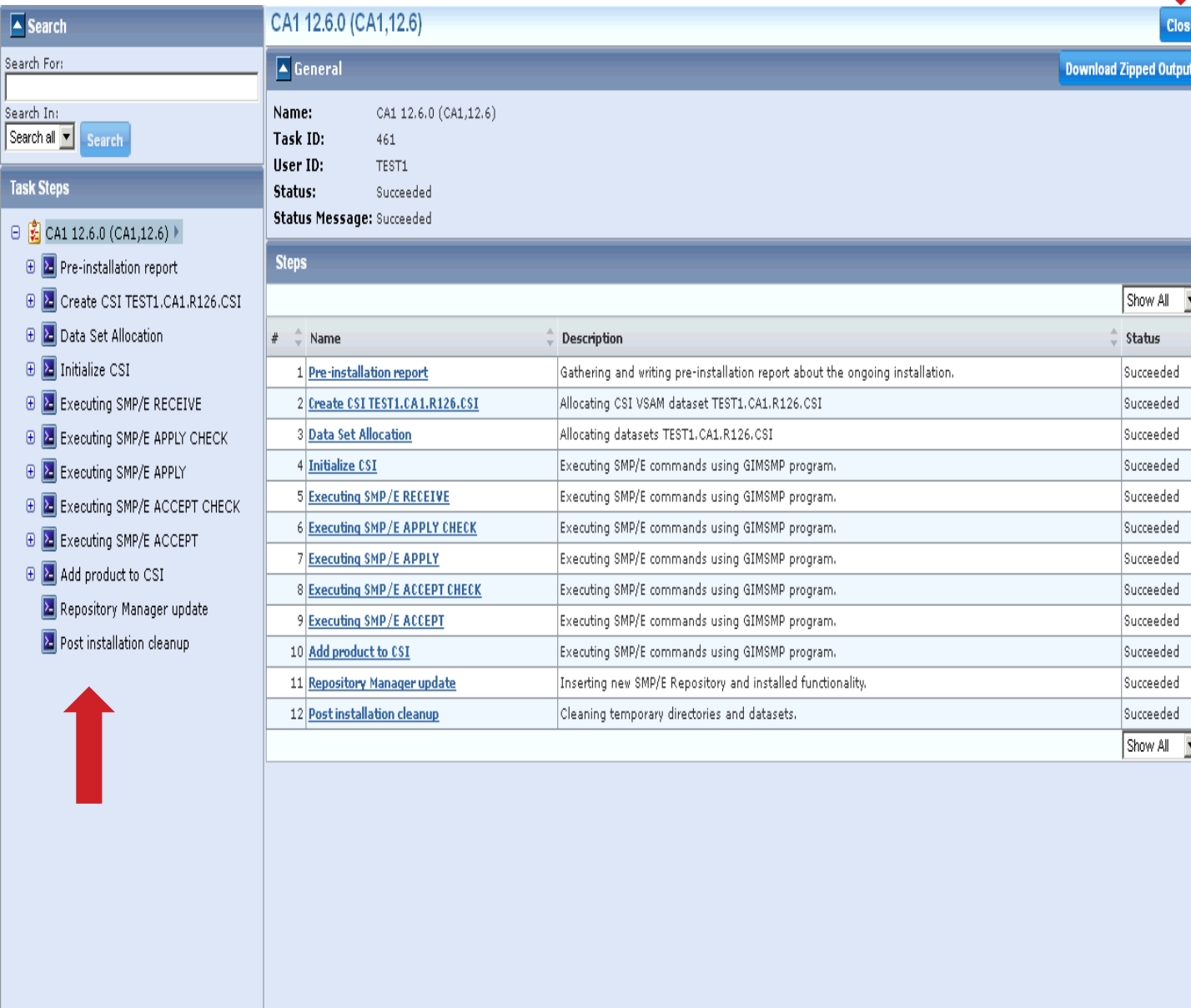
Base Install Task Dialog



When Task completes, Show Results button will be enabled

**Selecting Show Results will take you to Tasks Tab
➔ Task History and open the Task Output**

Installation Task Output



Search

Search For:

Search In:

Search all Search

Task Steps

- CA1 12.6.0 (CA1,12.6)
 - Pre-installation report
 - Create CSI TEST1.CA1.R126.CSI
 - Data Set Allocation
 - Initialize CSI
 - Executing SMP/E RECEIVE
 - Executing SMP/E APPLY CHECK
 - Executing SMP/E APPLY
 - Executing SMP/E ACCEPT CHECK
 - Executing SMP/E ACCEPT
 - Add product to CSI
 - Repository Manager update
 - Post installation cleanup

CA1 12.6.0 (CA1,12.6) Close

General Download Zipped Output

Name: CA1 12.6.0 (CA1,12.6)
Task ID: 461
User ID: TEST1
Status: Succeeded
Status Message: Succeeded

Steps

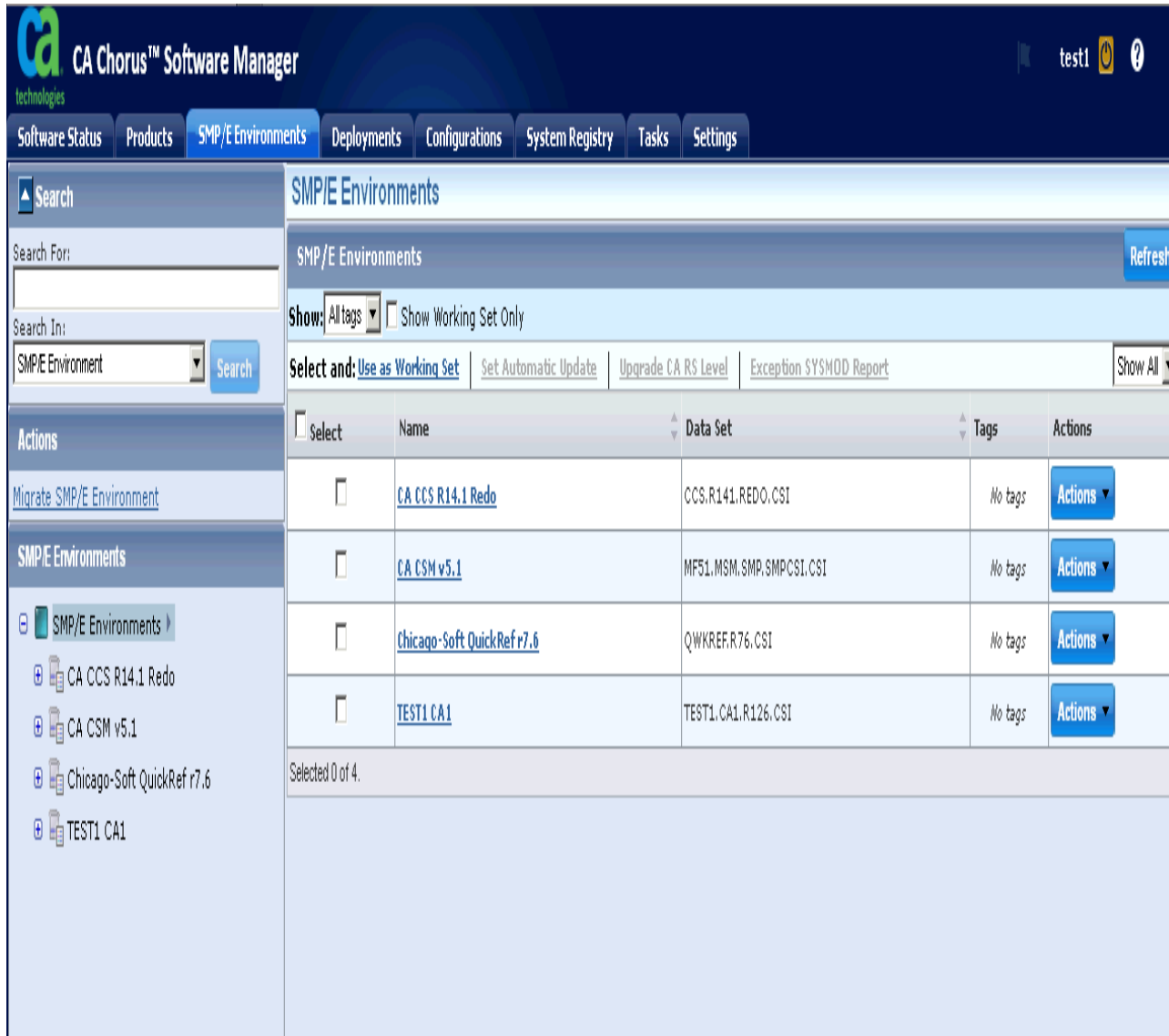
#	Name	Description	Status
1	Pre-installation report	Gathering and writing pre-installation report about the ongoing installation.	Succeeded
2	Create CSI TEST1.CA1.R126.CSI	Allocating CSI VSAM dataset TEST1.CA1.R126.CSI	Succeeded
3	Data Set Allocation	Allocating datasets TEST1.CA1.R126.CSI	Succeeded
4	Initialize CSI	Executing SMP/E commands using GIMSMP program.	Succeeded
5	Executing SMP/E RECEIVE	Executing SMP/E commands using GIMSMP program.	Succeeded
6	Executing SMP/E APPLY CHECK	Executing SMP/E commands using GIMSMP program.	Succeeded
7	Executing SMP/E APPLY	Executing SMP/E commands using GIMSMP program.	Succeeded
8	Executing SMP/E ACCEPT CHECK	Executing SMP/E commands using GIMSMP program.	Succeeded
9	Executing SMP/E ACCEPT	Executing SMP/E commands using GIMSMP program.	Succeeded
10	Add product to CSI	Executing SMP/E commands using GIMSMP program.	Succeeded
11	Repository Manager update	Inserting new SMP/E Repository and installed functionality.	Succeeded
12	Post installation cleanup	Cleaning temporary directories and datasets.	Succeeded

Show All

Explore output by using Steps Tree on left-hand side

Select Close button when your review is completed to return to the Products Tab

SMP/E Environments



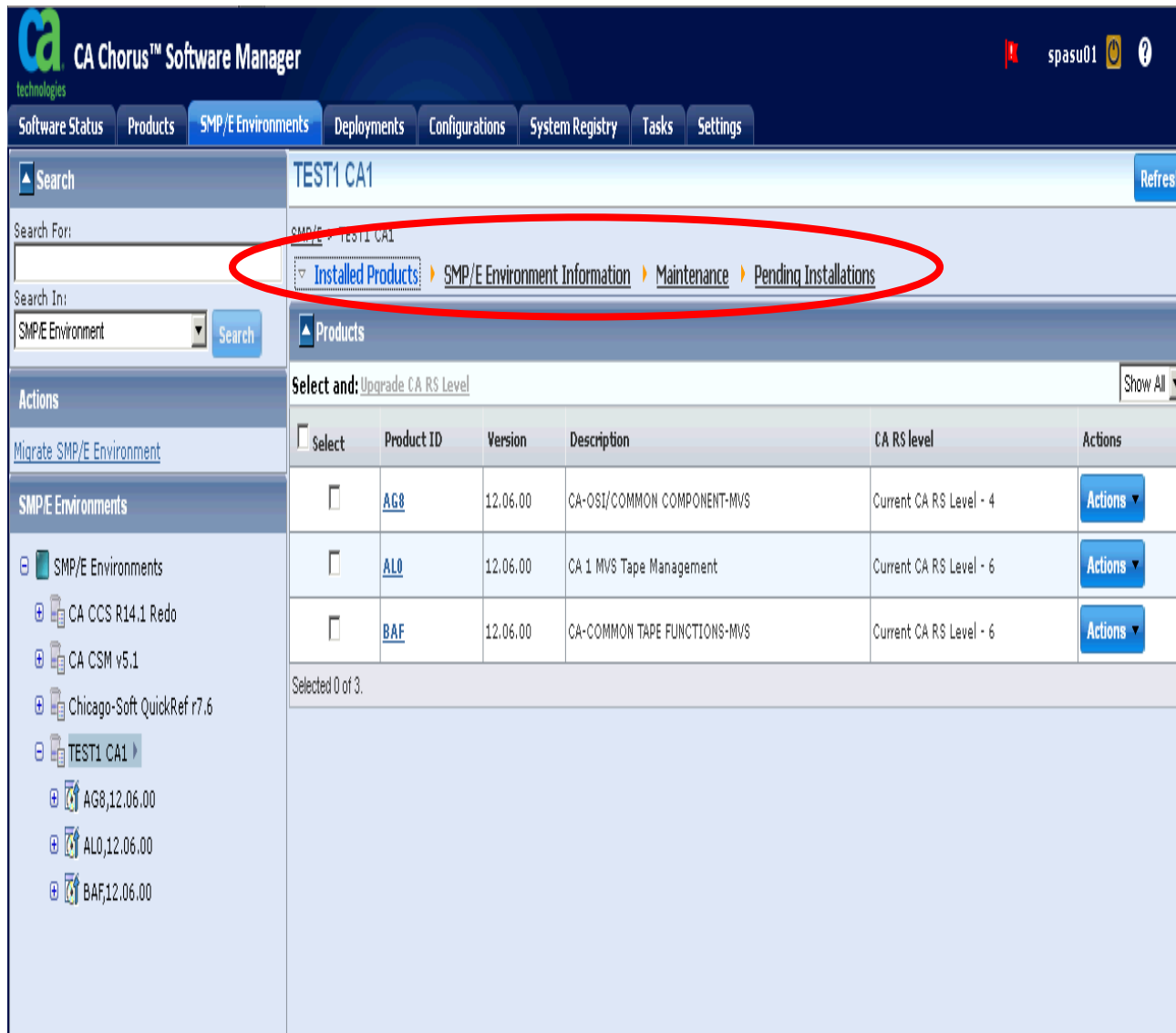
The screenshot shows the CA Chorus Software Manager interface. The top navigation bar includes tabs for Software Status, Products, SMP/E Environments (selected), Deployments, Configurations, System Registry, Tasks, and Settings. The left sidebar contains a search bar and a list of SMP/E Environments: CA CCS R14.1 Redo, CA CSM v5.1, Chicago-Soft QuickRef r7.6, and TEST1 CA1. The main content area displays the SMP/E Environments table with columns for Select, Name, Data Set, Tags, and Actions. The table lists four environments: CA CCS R14.1 Redo, CA CSM v5.1, Chicago-Soft QuickRef r7.6, and TEST1 CA1. The bottom of the table shows 'Selected 0 of 4'.

Select	Name	Data Set	Tags	Actions
<input type="checkbox"/>	CA CCS R14.1 Redo	CCS.R141.REDO.CSI	No tags	Actions
<input type="checkbox"/>	CA CSM v5.1	MF51.MSM.SMP.SMPCSI.CSI	No tags	Actions
<input type="checkbox"/>	Chicago-Soft QuickRef r7.6	QWKREF.R76.CSI	No tags	Actions
<input type="checkbox"/>	TEST1 CA1	TEST1.CA1.R126.CSI	No tags	Actions

Select the SMP/E Environments Tab

Select the Refresh button in the Top Right-hand corner of screen to update browser cache

Select Your Product Name from the list presented to review install details



CA Chorus™ Software Manager

spasu01

Software Status | Products | **SMP/E Environments** | Deployments | Configurations | System Registry | Tasks | Settings

Search: TEST1 CA1 Refresh

Search For: SMP/E - TEST1 CA1

Search In: SMP/E Environment Search

Actions

Migrate SMP/E Environment

SMP/E Environments

- SMP/E Environments
 - CA CCS R14.1 Redo
 - CA CSM v5.1
 - Chicago-Soft QuickRef r7.6
 - TEST1 CA1
 - AG8,12.06.00
 - AL0,12.06.00
 - BAF,12.06.00

Products

Select and: Upgrade CA RS Level Show All

Select	Product ID	Version	Description	CA RS level	Actions
<input type="checkbox"/>	AG8	12.06.00	CA-OSI/COMMON COMPONENT-MVS	Current CA RS Level - 4	Actions
<input type="checkbox"/>	AL0	12.06.00	CA 1 MVS Tape Management	Current CA RS Level - 6	Actions
<input type="checkbox"/>	BAF	12.06.00	CA-COMMON TAPE FUNCTIONS-MVS	Current CA RS Level - 6	Actions

Selected 0 of 3.

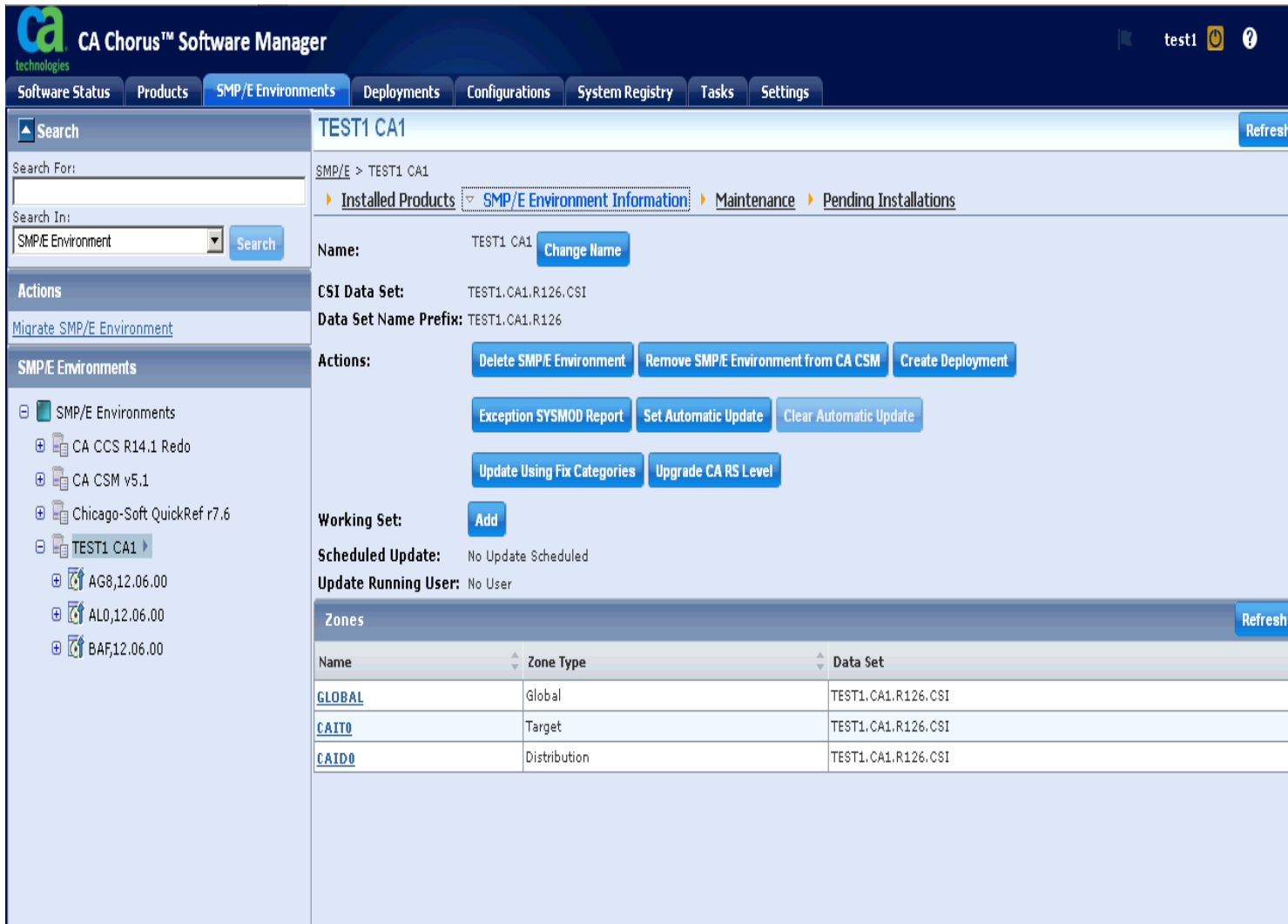
Notice that there are several views for each CSI

Review each view to get more information

When your review is completed, return to the SMP/E Environment Information View

Exercise 2 – Time Permitting

Apply Maintenance using CA Recommended Service



CA Chorus™ Software Manager

test1 ?

Software Status Products **SMP/E Environments** Deployments Configurations System Registry Tasks Settings

TEST1 CA1 Refresh

SMP/E > TEST1 CA1

Installed Products **SMP/E Environment Information** Maintenance Pending Installations

Name: TEST1 CA1 [Change Name](#)

CSI Data Set: TEST1.CA1.R126.CSI

Data Set Name Prefix: TEST1.CA1.R126

Actions: [Delete SMP/E Environment](#) [Remove SMP/E Environment from CA CSM](#) [Create Deployment](#)

[Exception SYSMOD Report](#) [Set Automatic Update](#) [Clear Automatic Update](#)

[Update Using Fix Categories](#) [Upgrade CA RS Level](#)

Working Set: [Add](#)

Scheduled Update: No Update Scheduled

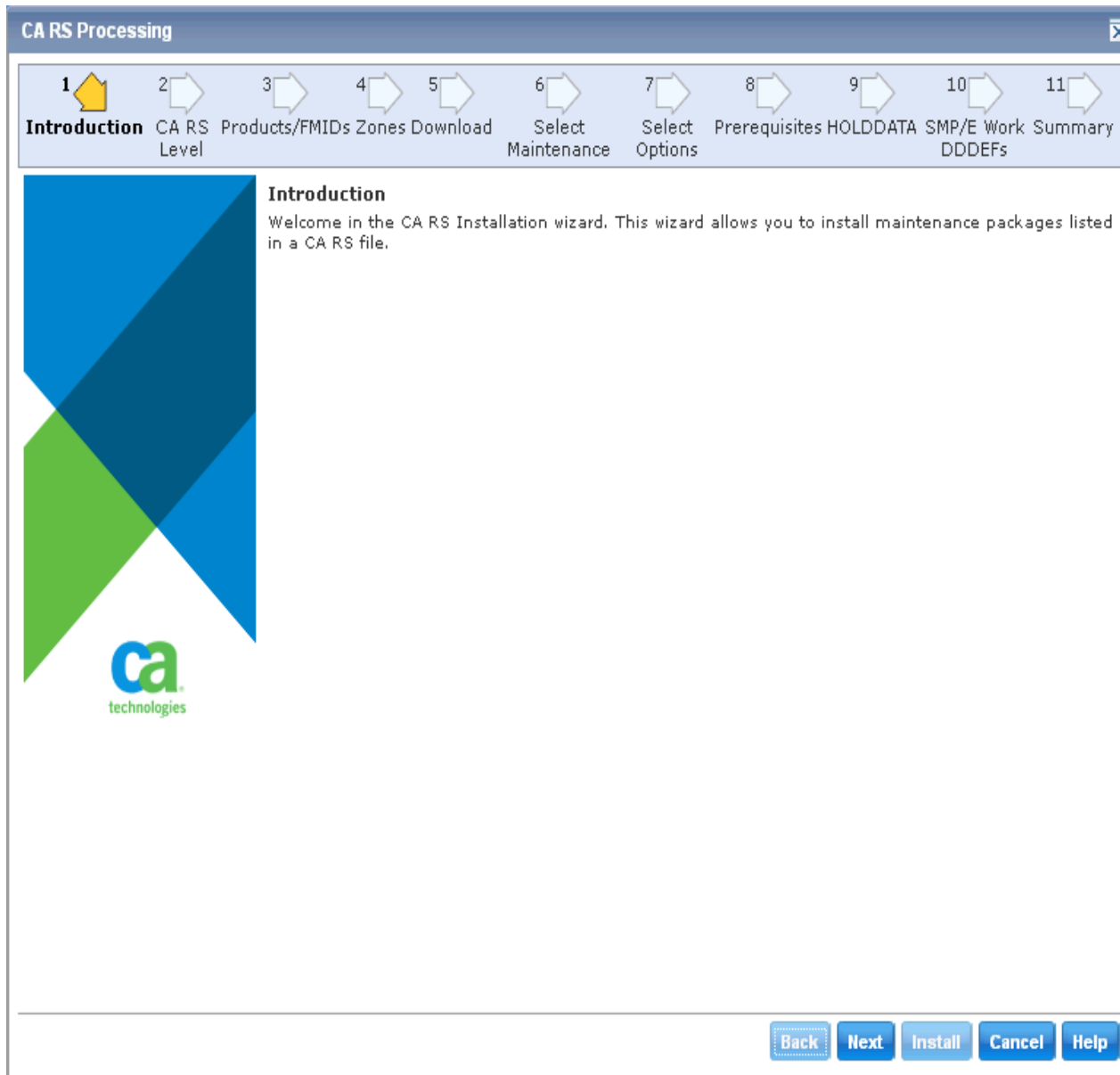
Update Running User: No User

Zones Refresh

Name	Zone Type	Data Set
GLOBAL	Global	TEST1.CA1.R126.CSI
CAIT0	Target	TEST1.CA1.R126.CSI
CAID0	Distribution	TEST1.CA1.R126.CSI

Select Upgrade CA RS Level to initiate the CARS Processing Wizard

You can also initiate this from the SMP/E Inventory List for one or more CSIs



Like the Base Install Wizard, the top section displays the steps that will be completed

Use the Navigation buttons at bottom to move through the wizard

CA RS Processing

1 Introduction
2 **CA RS Level**
3 Products/FMIDs Zones Download
4 Select Maintenance
5 Select Options
6 Prerequisites
7 HOLDDATA
8 SMP/E Work DDDEFs
9 Summary

Select CA RS Level

Select	Select CA RS Level
<input checked="" type="radio"/>	CAR1212 (Current)
<input type="radio"/>	CAR1210 (Current - 1)
<input type="radio"/>	CAR1207 (Current - 2)
<input type="radio"/>	CAR1204 (Current - 3)
<input type="radio"/>	CAR1201 (Current - 4)
<input type="radio"/>	CAR1110 (Current - 5)
<input type="radio"/>	CAR1107 (Current - 6)
<input type="radio"/>	CAR1104 (Current - 7)
<input type="radio"/>	CAR1101 (Current - 8)
<input type="radio"/>	CAR1010 (Current - 9)

Back
Next
Install
Cancel
Help

From this screen you will select the CA Recommend Service Level that you will use

The list is based on the CARS files that have been downloaded to your CSM catalog

The selection you make is cumulative (all previous CARS levels will be included)

CA RS Processing

1 Introduction 2 CA RS Level 3 **Products/FMIDs** 4 Zones Download 5 Select Maintenance 6 Select Options 7 Prerequisites 8 HOLDDATA 9 SMP/E Work DDDEFS 10 Summary 11

Products/FMIDs

Select products and FMIDs to be upgraded.

SMP/E Environment > Product > FMID

- TEST1 CA1
 - ☒ AG8,12.06.00 Current CA RS Level - 4
 - ☒ CAG8C60 Current CA RS Level
 - ☒ AL0,12.06.00 Current CA RS Level - 6
 - ☒ CAL0C60 Current CA RS Level
 - ☒ BAF,12.06.00 Current CA RS Level - 6
 - ☒ CBAFC60 Current CA RS Level

Back Next Install Cancel Help

A list of the current Features/FMIDs are presented and ALL are selected by default

You can eliminate any which you do not wish to update at this time – although this is NOT recommended

CA RS Processing

1 Introduction

2 CA RS Level

3 Products/FMIDs

4 **Zones**

5 Download

6 Select Maintenance

7 Select Options

8 Prerequisites

9 HOLDDATA

10 SMP/E Work DDDEFs

11 Summary

Zones

Select zones for the selected SMP/E Environments.

Select Zones

SMP/E Environment Name	Selected Zones	Action
TEST1 CA1	CAIT0	Select Zones

Back

Next

Install

Cancel

Help

A list of zones in the CSI are presented

For CSIs with multiple Target zones, you can choose one or more to apply the CARS

CA RS Processing

1 Introduction 2 CA RS Level 3 Products/FMIDs Zones 4 **Download** 5 Select Maintenance 6 Select Options 7 Prerequisites HOLDDATA 8 SMP/E Work DDDEFS 9 Summary 10 11

This step lists maintenance packages that are missing from Software Catalog and need to be downloaded from the FTP site if any.

There are no maintenance packages that need to be downloaded.

Back Next Install Cancel Help

If any PTFs in the CARS files is not already downloaded, CSM will present a list and give you option to download from the wizard.

CA RS Processing

1 Introduction
2 CA RS Level
3 Products/FMIDs
4 Zones Download
5
6 **Select Maintenance**
7 Select Options
8 Prerequisites
9 HOLDDATA
10 SMP/E Work DDDEFS
11 Summary

Select Maintenance

Select maintenance packages to be installed.

Select Maintenance

1 - 10 of 75 > >>

Select	Name	Description
<input checked="" type="checkbox"/>	RO40917	NO DUMP DD IN CTS PROC
<input checked="" type="checkbox"/>	RO39096	TMSSTATS EXITS DISPLAY SHOWS TMSXITA INSTEAD OF TMSXITS
<input checked="" type="checkbox"/>	RO37194	TMSPULL ABEND SOC4 +X'1580' OR GARBAGE VOLSER IN REPORT
<input checked="" type="checkbox"/>	RO39098	EXTERNAL SECURITY MESSAGES MAY BE ISSUED BY HEALTH CHECKS
<input checked="" type="checkbox"/>	RO39176	CHANGE IEFTMS71 USER EXIT NAMES TO TMSXITE/TMSXITU
<input checked="" type="checkbox"/>	RO45096	REMOVE 10,000 LIMIT FROM TMSVMEDT VOL= STATEMENTS
<input checked="" type="checkbox"/>	RO49573	ERRONEOUS MESSAGES FROM TMSAPEC ON SECONDARY SCANS
<input checked="" type="checkbox"/>	RO47199	READ ERROR COUNT INCORRECT FROM TMSSMF83
<input checked="" type="checkbox"/>	RO47474	CONCURRENT CTSTMAP ISSUES CA\$F062E DYNALLOE ERROR
<input checked="" type="checkbox"/>	RO38884	TMSSPLIT ICE067I DFSORT WARNING MESSAGE IN SYSOUT

1 - 10 of 75 > >>

Selected 75 of 75.

Back
Next
Install
Cancel
Help

The list of PTFs to be installed will be displayed.

Notice you are not given an opportunity to change this selection since it is derived from the CARS level selected.

CA RS Processing

1 Introduction 2 CA RS Level 3 Products/FMIDs 4 Zones Download 5 6 Select Maintenance 7 **Select Options** 8 Prerequisites 9 HOLDDATA 10 SMP/E Work DDDEFs 11 Summary

Installation options

Perform RECEIVE, APPLY CHECK and APPLY on selected maintenance items.

Select installation mode

☐ RECEIVE and APPLY
☐ RECEIVE and APPLY CHECK
☒ RECEIVE, APPLY CHECK and APPLY
☐ RECEIVE only

Back Next Install Cancel Help

**Select the SMPE
Action you wish to
be performed**

CA RS Processing

1 Introduction
2 CA RS Level
3 Products/FMIDs
4 Zones
5 Download
6 Select Maintenance
7 Select Options
8 **Prerequisites**
9 HOLDDATA
10 SMP/E Work DDDEFs
11 Summary

Prerequisites

Review prerequisites that will be installed together with maintenance packages that you have selected.

PTF	Available	SMP/E Environments without this required PTF
RO42202	Yes	TEST1.CA1.R126.CSI
RO43218	Yes	TEST1.CA1.R126.CSI

Back
Next
Install
Cancel
Help

Any prerequisite PTFs are verified and available in the CSM Catalog

If the PTFs are not available, the dialog will not allow you to proceed.

CA RS Processing

1 Introduction 2 CA RS Level 3 Products/FMIDs 4 Zones Download 5 Select Maintenance 6 Select Options 7 Prerequisites 8 **HOLDDATA** 9 SMP/E Work DDDEFs 10 Summary 11

HOLDDATA

Review all HOLDDATA. HOLDDATA other than the error HOLDDATA will be bypassed.

Error HOLDDATA detected. Any SYSMOD marked PE will not be included in the APPLY processing unless associated HOLDREASON is resolved by the other SYSMOD being processed.

[Export Table](#)

HOLDDATA

- ERROR
 - CALOC60
 - RO42202
 - AR42202
 - RO43218
 - AR43218
 - SYSTEM
 - CAG8C60
 - RO41064
 - DYNACT
 - CALOC60
 - RO31530

```

++HOLD (RO42202)
FMID (CALOC60)
ERROR
REASON (AR42202)
COMMENT ( PROBLEM: 1 2102 -
          EMPTY TMOKEYXX MEMBER IS NOT ALLOWED WITH
          RO42202 APPLIED
          SMRTDATA (CHGDT(121003) FIX(RO50778)
          SYMP ()
          ) ).
++HOLD (RO43218)
FMID (CALOC60)
ERROR
REASON (AR43218)
COMMENT ( PROBLEM: 1 2081 -
          IEFTMS70 EYY-120 WITH A SHORT BLOCK WITH
          RO43217 OR RO43218
          SMRTDATA (CHGDT(120515) FIX(RO45000)
          ) ).
  
```

Back Next Install Cancel Help

In order to continue, all **HOLDDATA** will be **BYPASSED**.

Use the **Export Table** link to obtain an **HTML** version of the Hold information for reviewing

If any **HOLDDATA** cannot be bypassed, select **Cancel** to stop the Dialog

CA RS Processing ✕

1

2

3

4

5

6

7

8

9

10

11

Introduction

CA RS Level

Products/FMIDs

Zones Download

Select Maintenance

Select Options

Prerequisites

HOLDDATA

SMP/E Work DDDEFs

Summary

SMP/E Work DDDEFs

SMP/E Work DDDEF Override Retrieve DDDEF

<input type="checkbox"/> Select	DDDEF Name	Allocation Parameters	Action
<input type="checkbox"/>	SMPWRK1		Override
<input type="checkbox"/>	SMPWRK2		Override
<input type="checkbox"/>	SMPWRK3		Override
<input type="checkbox"/>	SMPWRK4		Override
<input type="checkbox"/>	SMPWRK6		Override
<input type="checkbox"/>	SYSUT1		Override
<input type="checkbox"/>	SYSUT2		Override
<input type="checkbox"/>	SYSUT3		Override
<input type="checkbox"/>	SYSUT4		Override

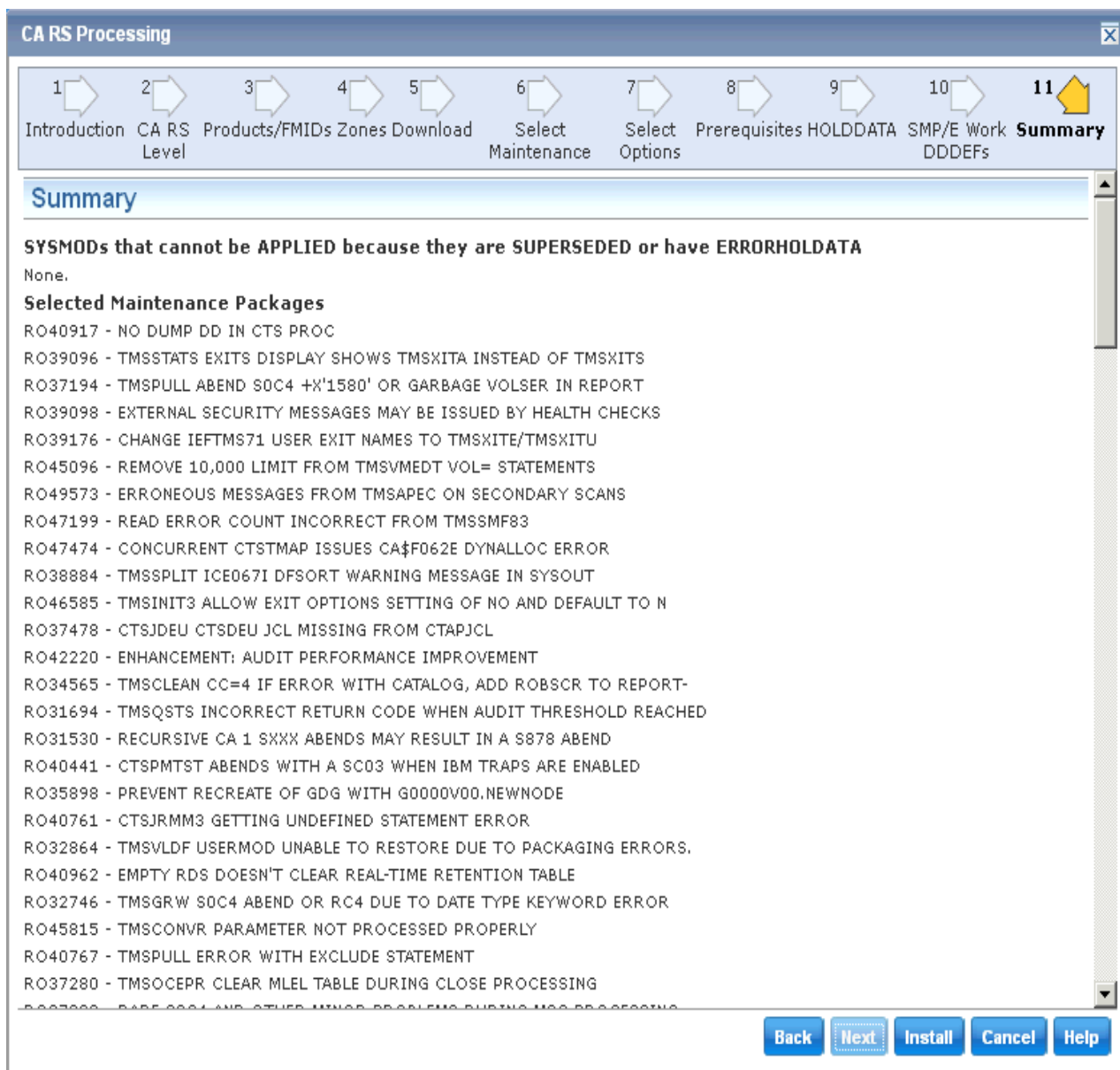
Zones

Zone Data Set	Zone Type	Zone Name	
TEST1.CA1.R126.CSI	Global	GLOBAL	View SMP/E Work DDDEFs
TEST1.CA1.R126.CSI	Target	CAIT0	View SMP/E Work DDDEFs

Back
Next
Install
Cancel
Help

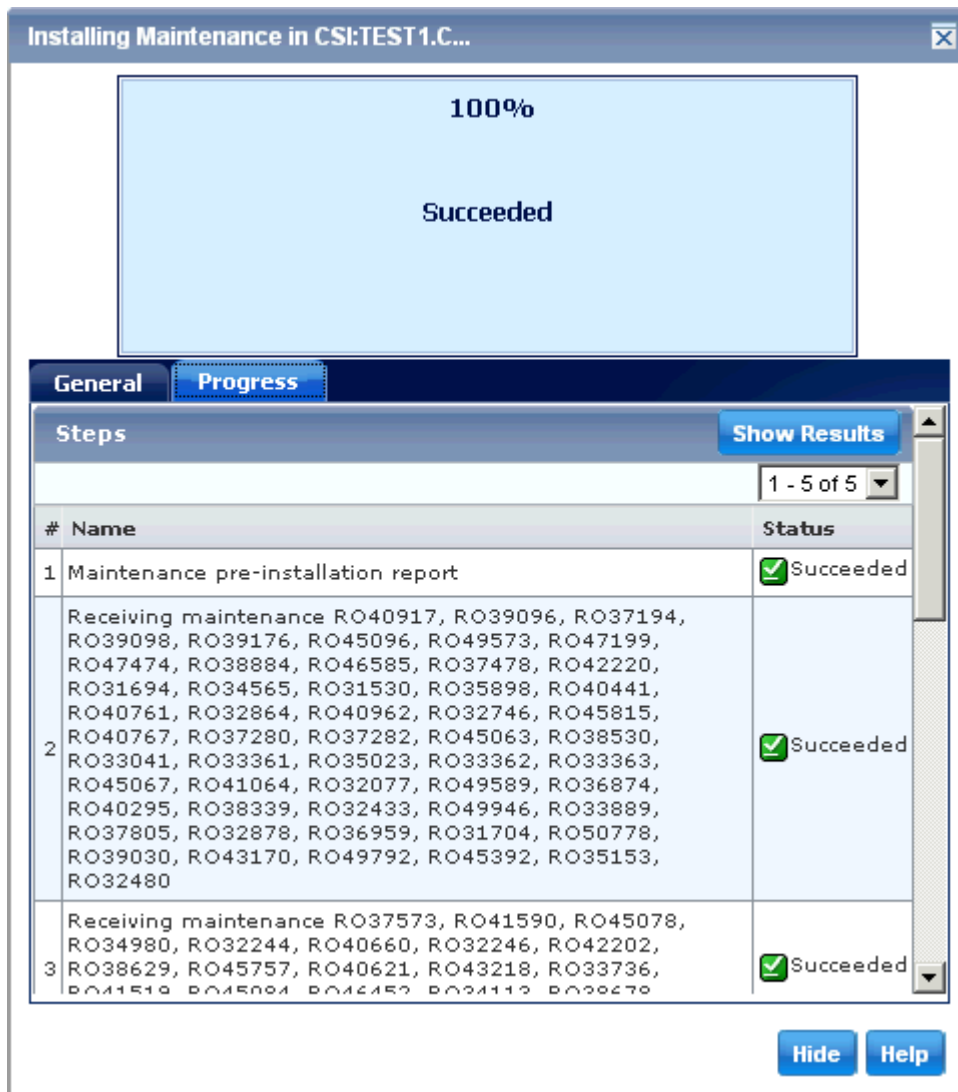
This panel can be used to override any of the Work DDDEFs defined to the CSI

Use the defined Work DDDEF definitions for this exercise



Like the Base Installation Wizard, the Summary screen presents all options selected before the task is submitted

Select Install from the Navigation Options to submit the task



The Task dialog is presented.

Select the Progress Tab to view processing steps

When the Task completes, use the Show Results option to review the task output

Verified installation from SMP/E Environment – Installed Products

CA Chorus™ Software Manager

Software Status | Products | **SMP/E Environments** | Deployments | Configurations | System Registry | Tasks | Settings

Search For:
Search In:

Actions
[Migrate SMP/E Environment](#)

SMP/E Environments

- SMP/E Environments
 - CA CCS R14.1 Redo
 - CA CSM v5.1
 - Chicago-Soft QuickRef r7.6
 - TEST1 CA1**
 - AG8,12.06.00
 - AL0,12.06.00
 - BAF,12.06.00

TEST1 CA1

SMP/E > TEST1 CA1

Information about CSI TEST1.CA1.R126.CSI has been updated.

Installed Products ▶ [SMP/E Environment Information](#) ▶ [Maintenance](#) ▶ [Pending Installations](#)

Products

Select and: [Upgrade CA RS Level](#)

Select	Product ID	Version	Description	CA RS level	Actions
<input type="checkbox"/>	AG8	12.06.00	CA-OSI/COMMON COMPONENT-MVS	Current CA RS Level	No action
<input type="checkbox"/>	AL0	12.06.00	CA 1 MVS Tape Management	Current CA RS Level	No action
<input type="checkbox"/>	BAF	12.06.00	CA-COMMON TAPE FUNCTIONS-MVS	Current CA RS Level	No action

Selected 0 of 3.



CA CSM - Value Proposition

Unified interface to perform any or all functions

Allows for gradual adoption

Faster, repeatable, minimizes risk

Shortens learning curve for new staff members

Facilitates inventory management, task management and audit

Available at no extra charge

CA CSM Resource Center



Available from CA Support Online

Support

→ Home

Advanced Search

Support By Product

Open a Case

View Cases

Download Center



Documentation

Licensing

Go Live with CA Technologies
Project Management

User Administration



CA Programs

Compatibilities

Subscriptions



Contact and Resources



Print | Bookmark

CA Chorus Software Manager Resource Center

Here you'll find everything you need to know about how to install and use CA Mainframe Software Manager (CA MSM). Whether you're new to CA MSM and are interested in learning more about it or are an experienced user with a "how to" question, the CA MSM Resource Center is for you.

Presentations

Here are some recent presentations on Mainframe 2.0 and CA Mainframe Software Manager:

CA Mainframe Software Manager Overview and What's New Highlights.

For the full text of this document, [Click here](#)

CA Mainframe Software Manager (CA MSM) Best Practices.

For the full text of this document, [Click here](#)

CA Technologies New Enhanced Testing and Improvements in Mainframe Service Delivery.

For the full text of this document, [Click here](#)

Video Tutorials

In the following tutorials, CA MSM experts from CA's Mainframe Solution Center guide you through the process of installing and using CA MSM. If you're new to CA MSM, we recommend that you view each video in sequence. If you have questions about a specific topic, you can also view any of the videos individually. Topics 1-7 will generally be of interest only to those installing and maintaining CA MSM, while topics 8-12 will be of interest to everyone.

These videos should be viewed in conjunction with the *CA Mainframe Software Manager Product Guide* and other publications available on the CA Mainframe Software Manager Bookshelf that corresponds with your release of CA MSM.

1. [Assessing your System for CA MSM](#)

Ready to install MSM? This tutorial discusses how to download and run the CA MSM Prerequisite Validator tool to verify that the necessary software, network, and security prerequisites are present on the system where you'll be installing CA MSM. *(running time: 33 minutes)*

2. [Preparing your System for CA MSM](#)

Now that your system is ready for CA MSM, this tutorial discusses the pre-installation activities required for the actual installation, including setting up the z/OS Unix environment and gathering configuration information that will be needed during the installation process. *(running time: 25 minutes)*

3. [Installing CA MSM for the First Time](#)

Preparations are complete, let's get started! This tutorial covers a CA MSM installation in depth, from the setup script to post-installation activities. This video is intended for first time CA MSM installers. If you're upgrading an existing CA MSM system to a new release, please see topic #7. *(running time: 34 minutes)*

4. [Logging in to CA MSM for the First Time](#)

Now that CA MSM has been installed, we're ready to logon to the product and perform some one-time set up tasks. This video covers these topics in detail. *(running time: 50 minutes)*

Questions?

