

 #SHAREorg

# z/OSMF Update - Hints and Tips

Anuja Deedwaniya  
IBM Corp  
anujad@us.ibm.com

August 8, 2012  
Session Number **11837**



# Agenda

- Resource Monitoring – Sharing Dashboards workaround
- Using z/OSMF Workload Management and the ISPF WLM Administrative Application Concurrently
- Incident Log: Sending user doc
- Miscellaneous items
- Some Configuration Gotchas
- Some useful APARs
- Coming in the future

# Resource monitoring – sharing dashboards



**Scenario:** share user defined resource monitoring dashboard

**Current:** user defined dashboards are visible to the user only.

**Solution:** leverage the 'links' function in z/OSMF

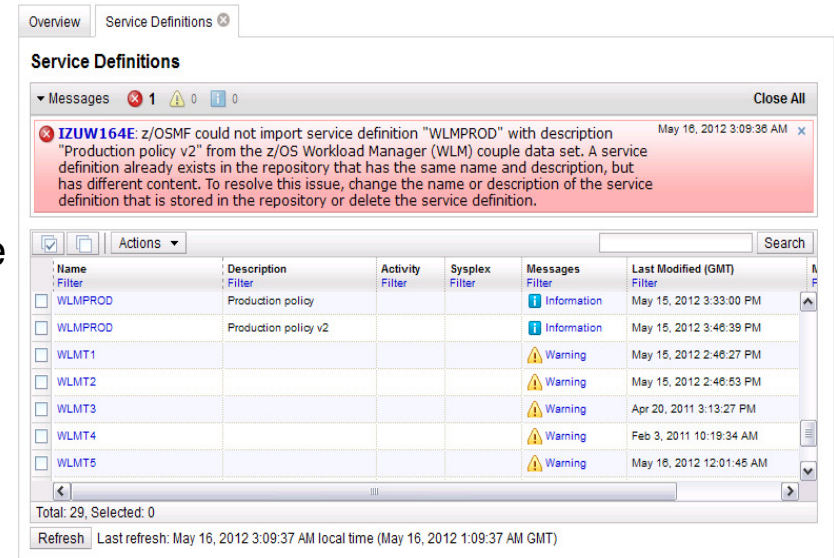
## Approach:

- Create the dashboard with all desired metrics and save it. The dashboard is available in your list of dashboards (but it is not available to other users).
- Open the dashboard in a separate browser tab or window.
- Select the URL in the browser address bar and copy it to the clipboard (Ctrl-C).
- Open the Links task from the z/OSMF Administration category.
- Create a new Link.
- Specify a name (and a SAF resource name).
- Paste the content of the clipboard to the URL entry field (Ctrl-V).
- Optionally, change the Category.
- Click OK: The dashboard is now available for all users in the navigation area.



# Using z/OSMF Workload Management and the ISPF WLM Administrative Application Concurrently to Update the Installed Service Definition

- z/OSMF Workload management task lists the installed service definition
  - The combination of service definition name and description in the Service Definitions table has to be unique
- If you are updating and re-installing the installed service definition with the ISPF WLM Administrative Application without changing the service definition name or description message IZUW164E will show up indicating that the installed service definition could not be imported from the WLM couple data set because of a naming conflict with another service definition in the Service Definitions table
- Options to resolve the conflict indicated by message IZUW164E
  1. Delete the old version of the service definition in the Service Definitions table
  2. Open the old version of the service definition in a Modify tab and change the name or the description to resolve the naming conflict
- Options to avoid the conflict (i.e. avoiding that message IZUW164E is displayed)
  1. Use only z/OSMF Workload Management to update the installed service definition
  2. Establish a process such that when updating the installed service definition with the ISPF WLM Administrative Application the service definition description is changed, e.g. a version number could be put in the description that is increased on each update



Overview | Service Definitions

**Service Definitions**

Messages: 1 (Error), 0 (Warning), 0 (Info) | Close All

**IZUW164E:** z/OSMF could not import service definition "WLMPROD" with description "Production policy v2" from the z/OS Workload Manager (WLM) couple data set. A service definition already exists in the repository that has the same name and description, but has different content. To resolve this issue, change the name or description of the service definition that is stored in the repository or delete the service definition.

Name	Description	Activity	Sysplex	Messages	Last Modified (GMT)
WLMPROD	Production policy			Information	May 15, 2012 3:33:00 PM
WLMPROD	Production policy v2			Information	May 15, 2012 3:46:39 PM
WLMT1				Warning	May 15, 2012 2:46:27 PM
WLMT2				Warning	May 15, 2012 2:46:53 PM
WLMT3				Warning	Apr 20, 2011 3:13:27 PM
WLMT4				Warning	Feb 3, 2011 10:19:34 AM
WLMT5				Warning	May 18, 2012 12:01:45 AM

Total: 29, Selected: 0

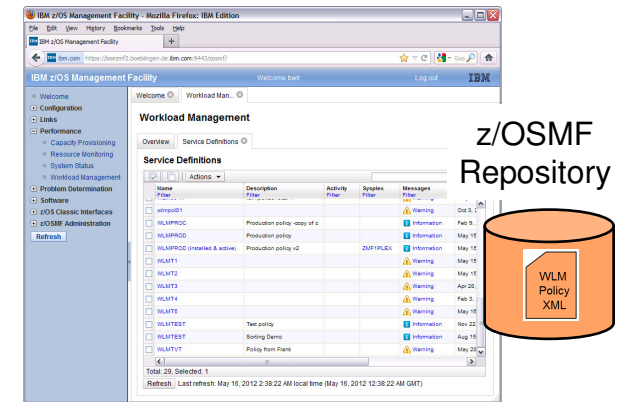
Refresh | Last refresh: May 16, 2012 3:09:37 AM local time (May 16, 2012 1:09:37 AM GMT)

# Using z/OSMF Workload Management and the ISPF WLM Administrative Application Concurrently to Update Saved Service Definitions

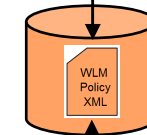


- If you want to edit stored service definitions with z/OSMF Workload Management and also with the ISPF WLM Administrative Application you have to decide where the master copy of the service definition should be located
- Option 1: In the z/OSMF repository
  - You can immediately open the service definition in a Modify tab and edit it
  - Using the ISPF WLM Administrative Application
    1. You have to export the service definition from z/OSMF to a sequential data set using the action *Export > To Host Data Set* of the Service Definitions table
    2. You can now open the sequential data set with the ISPF WLM Administrative Application and make your changes
    3. When done, you can import the sequential data set into z/OSMF using the action *Import > From Host Data Set* of the Service Definitions table
- Option 2: In a sequential data set
  - You can immediately open the service definition with the ISPF WLM Administrative Application
  - Using z/OSMF
    1. You have to import the service definition from the sequential data set using the action *Import > From Host Data Set* of the Service Definitions table
    2. You can now open the imported service definition in a Modify tab and make your changes
    3. When done, you can export the service definition to the sequential data set using the action *Export > To Host Data Set* of the Service Definitions table

Service Definitions table

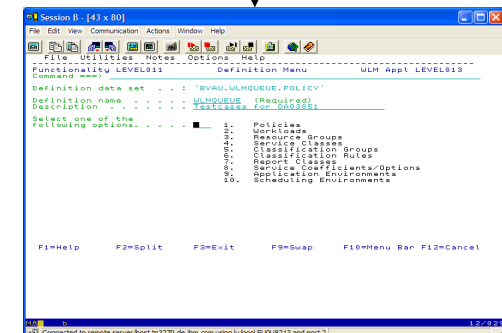


Import/Export



Sequential Data Set

Open/Save



ISPF WLM Admin. Appl

## Incident Log: Sending User Doc

- Incident log customer use case scenario: send data even when there is no Incident
- Approach: Leverage the Send diagnostic data wizard for FTP of all documentation
- Incident log supports attaching docs to an incident, so you can create a User Defined Incident ( using the console Dump command) and then use that to send attachments via FTP, updating the Problem number field each time.

## Miscellaneous items

- z/OSMF Tables
  - Column configuration drag and drop support – if a plugin supports the ‘Column Configuration’ action, you can size or move the columns using mouse drag and drop or resize.
- z/OSMF help
  - Also available on info center
  - It’s your User’s guide! Not just traditional panel help.
  - Has usage and tips
  - Can search and print

# Configuration Gotchas

**Problem:** IZUG311E - IZU\_APPSERVER\_ROOT  
"/zWebSphereOEM/V7R0/config1" is not valid.

**Reason:** Typically, you have applied some WASOEM service that resulted in a broken symlink for  
/zWebSphereOEM/V7R0/config1/AppServer/bin/setupCmdLine.sh to the WASOEM product file system

**Solution:** Ensure that your WASOEM configuration and product file systems are in synch. Basically the symlinks that were created at the time of WASOEM configuration should still point to the correct targets. For example, if the WASOEM product file system was unmounted, then all the symlinks pointing to the product file system from the configuration file system would be broken



## Configuration Gotchas (contd)

**Problem:** Using any user defined value or using the default value of IZU.SIZUDATA produces an error message IZUG194E: The value for variable "IZU\_DATA\_FS\_NAME: contains an incorrect character """.

**Reason:** Running configuration script with a non z/OS grep utility.

**Solution:** Ensure that the grep version that is being invoked is the one provided by IBM. The correct grep to use is in /bin/grep. Customers sometimes run the GNU grep provided to them from the Tools and Toys page.

## Configuration Gotchas (contd)

**Problem:** Some CIM error (usually security related) would cause us to look at the log. When we view the log we see a bunch of ascii unreadable characters.

**Reason:** The .profile for z/OSMF administrator is not setup with CIM environment variables

**Solution:** See z/OSMF Configuration guide for R13, Chapter 4 - Configuring z/OSMF, section 'Ensure that the z/OSMF administrator is authorized to the CIM server'.

You will need to copy the contents of /usr/lpp/wbem/install/profile.add into z/OSMF administrator's .profile.

## Configuration Gotchas (contd)

**Problem:** Incident Log Dependencies not correctly configured (or not configured at all), causing the *izusetup.sh –finish* step to fail repeatedly.

**Reason:** It is typically either related to security or physically setting up the dependencies. i.e. CEA parmlib not correctly configured (i.e. SNAPSHOT(N)), SDDIR not allocated or has over 500 incidents, etc.

**Solution:** To verify the set up of the dependencies before you deploy the plug-in, you can run *izusetup.sh –verify log* before you run *izusetup.sh -finish*

# Configuration Gotchas (contd)

## Security setup

- Review the tables in the back of the book for requirements,
- Request a product agnostic view from service if needed
  - Looking to make it available more easily

## Other Configuration items

- There is a new ServerPac APAR out which affects anyone who ordered z/OSMF between March and July of this year.
  - The orders are missing the -prime step in the setup... so customers think everything is installed, but nothing actually works.
  - ServerPac has a workaround, and can offer affected customers a new script to correct the problem.
  - See APAR **OA39954**



## Recent announcement

- Serverpac announcement – get z/OSMF in it's own serverpac
  - **IBM Product ServerPac Announcement (212-272) RFA (#56924) (July 31, 2012)**
  - **<http://www-01.ibm.com/common/ssi/cgi-bin/ssialias?infotype=AN&subtype=CA&htmlfid=897/ENUS212-272&appname=USN>**

## Some useful APARs: Incident Log and ISPF

- Incident log – migrated dataset handling
  - In the past, working with migrated diagnostic data sets could be lengthy resulting in timeouts; now z/OSMF can process migrated data sets with improved handling
  - *z/OSMF APAR - PM46302*
  - *z/OS CEA APAR – OA37149*
- Incident Log CEATool - (OA38812 , UA65835)
- ISPF Usability enhancement - *PM47241*

# Some useful APARs: Software deployment



- **PM40764: ALLOW A USER TO CREATE A NEW DEPLOYMENT THAT USES THE SAVED CONFIGURATION FROM A PREVIOUS DEPLOYMENT**
- **Copy a Deployment**
  - z/OSMF will allow a user to make a copy of a prior completed deployment in order to reuse the valuable information that describes the target of that deployment.
    - z/OSMF will compare the saved information to the current source software instance and identify any discrepancies or differences, and allow you to reuse the saved information as much as possible, thus making a second or subsequent deployment much quicker and easier.
- **Granular Authorization**
  - Security administrators will now have the capability to define SAF profiles that can control users' access to certain functions or to certain objects.
    - For example, it will now be possible for DB2 administrators to have authorization to add and modify software instances and deployments only for DB2 software, but not for z/OS, and vice versa for z/OS administrators. Thus, both DB2 and z/OS administrators can be confident they will be able to manipulate only the objects they are authorized.
    - by default all users will continue to have authorization to all software instances and deployments.
- Requires Core/Config support - PM50561

*"The IBM z/OS Management Facility is the most important new facility since the Workload Manager and Parallel Sysplex. Every z/OS staff should be planning for their z/OSMF implementation now. This is a 'must have' for the system programmers of tomorrow (or even today)."*

*Cheryl Watson, President of Watson & Walker, Inc.*

# z/OS Management Facility Rollout

*Problem , Performance, & Analysis*

*Installation, Migration, and Maintenance*

*Configuration*

**Simplify and modernize the user experience and programming requirements**

*Task-oriented browser based user-interface; end-to-end task simplification ; eliminating opportunity for error*

**Incident Log (R11/R12)** The Incident Log provides a consolidated list of SVC Dump related problems, along with details and diagnostic data captured with each incident. It also facilitates sending the data for further diagnostics.

**Resource Monitoring (R12)** dynamic real time metrics for system performance

**Software Deployment (R13)** Deployment Manager will make deployment of installed software simpler and safer. It will replace manual and error prone procedures with a user friendly application, and incorporate IBM recommended best practices for software deployment.

**Configuration Assistant for z/OS Comm Server (R11)** Simplified configuration and setup of TCP/IP policy-based networking functions

**WLM Policy Editor (R12)** Simplified management of WLM service definitions and policies. Facilitate the creation and editing of WLM service definitions, installation of WLM service definitions, and activation of WLM service policies

**Capacity Provisioning (R13)** simplify the work of a z/OS CP administrator to manage connections to CPMs, view reports for domain status, active configuration and active policy.

## Customer requirements

- Ongoing every release

## z/OSMF Base Services:

- The ability to add non-z/OSMF launch points and links to any category in the navigation tree allows a central tool for effective information and knowledge sharing.
- Application linking **New**
- Security integration with SAF **New**
- ISPF Web UI **New**
- REST API for Jobs **New**