

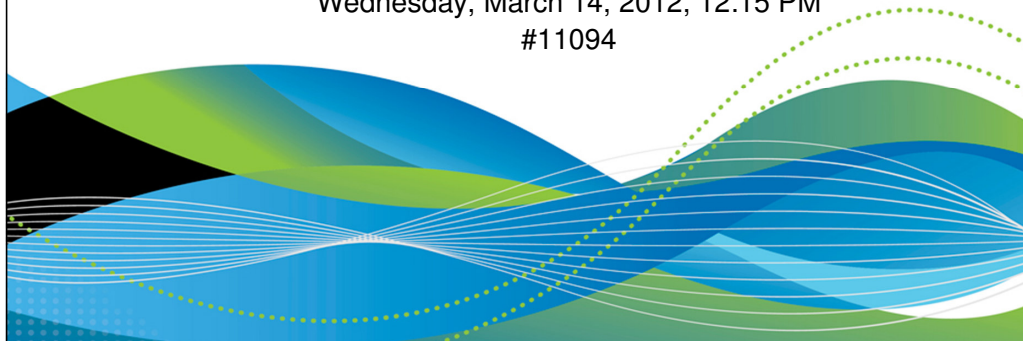
#SHAREorg

SHARE
Technology • Connections • Results

Decision Management for CICS: Optimizing CICS Infrastructure for Business Rules Execution

Geoffrey Pirie & Chris Backhouse
IBM

Wednesday, March 14, 2012, 12:15 PM
#11094



1

IBM BPM and IBM WebSphere Operational Decision Management on z/OS SHARE sessions – join us

10736: Making zEnterprise Relevant to Line of Business
Monday, March 12, 2012: 1:30 PM-2:30 PM, International Ballroom E

10740: CICS and Decision Management: Perfect Together
Tuesday, March 13, 2012: 3:00 PM-4:00 PM, Dogwood A

➡ **11094: Decision Management for CICS: Optimizing CICS Infrastructure for Business Rules Execution - Lunch & Learn**
Wednesday, March 14, 2012: 12:15 PM-1:15 PM, International Ballroom B

10742: Using Business Rules to Achieve Affordable Agility in System z Applications
Thursday, March 15, 2012: 8:00 AM-9:00 AM, International Ballroom E

10751: Modernization of Mainframe Applications with WebSphere Operational Decision Management for z/OS
Thursday, March 15, 2012: 9:30 AM-10:30 AM, International Ballroom E

10743: Why Business Rules and Business Process Management are Important to System z Apps (and to you)
Thursday, March 15, 2012: 4:30 PM-5:30 PM, International Ballroom E

SHARE in Atlanta
2012

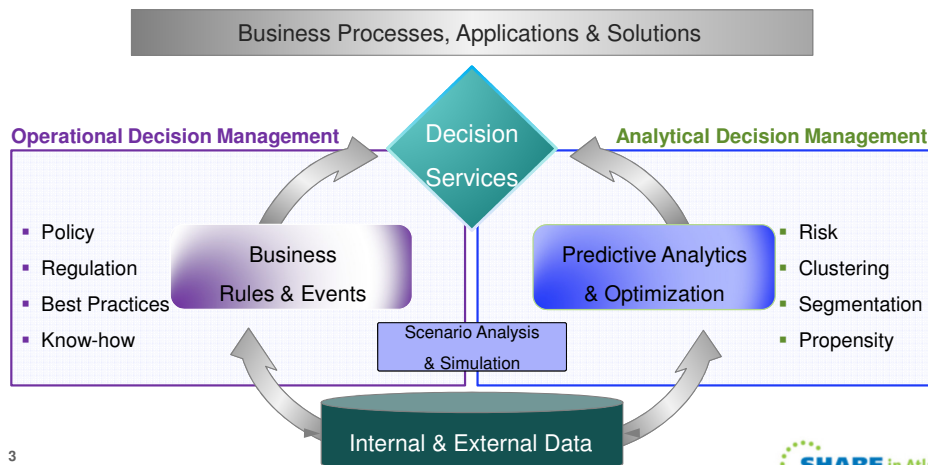
2

2

What is Decision Management?



Decision Management is a business discipline, supported by **operational** and **analytics** software, that enables organizations to automate, optimize and govern repeatable business decisions to improve the value of customer, partner and internal interactions.



3

SHARE in Atlanta
2012

3

Business Rules and Business Events



Business Rules

Primarily implements a decision model – given a snapshot view of data, determines best course of action at a specific point in a process or application

Main purpose is to automate a decision based on a combination of factors (business policies, regs, best practices)

If the **Passenger** is a **gold frequent traveler** and **flight distance** is more than 4000 miles and the **flight destination** is in Europe or Asia Then Add 10,000 points to the fidelity card of the **Passenger**

Business Events

Primarily implements a time-based pattern detection model – correlating events as data is in motion

Main purpose is to determine what of interest is transpiring and coordinate one or more responses by other systems or generate alerts to people

If more than 2 **customer withdrawals** in an **ATM** are done **in the same day** and the 2 ATMs are from 2 foreign countries Then **Investigate possible fraud** Reduce cash redraw max amount to 100\$



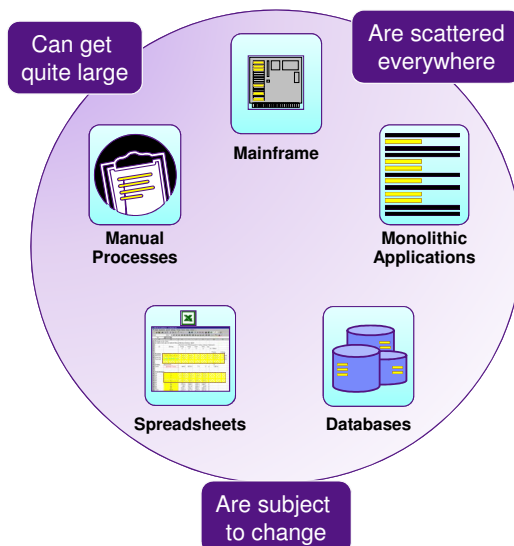
Gartner characterizes Rules and Complex Event systems as complementary notions. The combination being required to implement intelligent decision management programs.

SHARE in Atlanta
2012

4

4

Operational decisions in organizations



Challenges for a Change Request

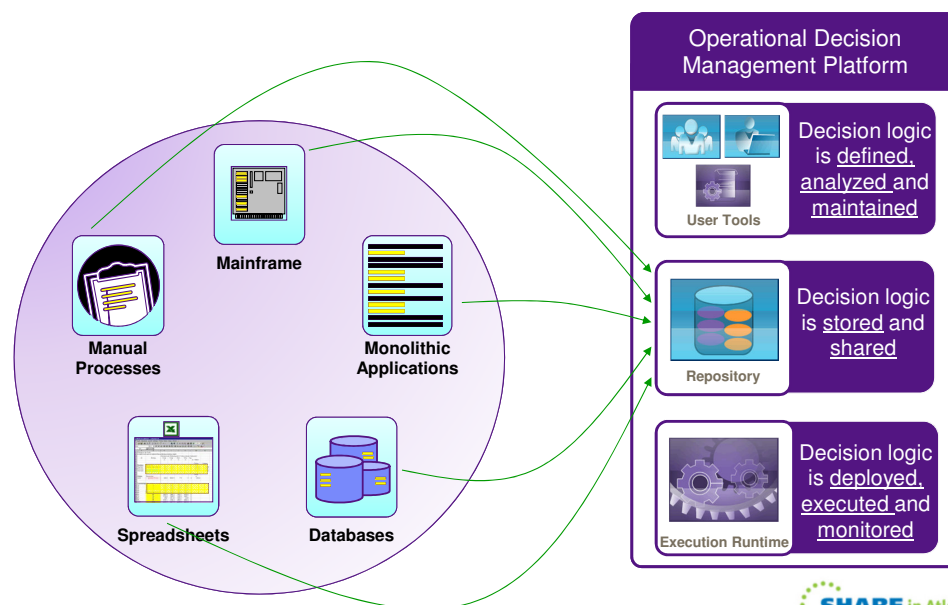
- Changes are costly, resource & time-intensive
 - Hidden in code
 - Most changes have to be programmed – costly
- Lack of consistency
 - No central management
 - No reuse of decision logic
- Gap between business analysts & IT administrators
 - Knowledge fades over time
- Lack of audit ability
- No easy way to test/simulate changes

5

SHARE in Atlanta
2012

5

Operational Decision Management approach



6

SHARE in Atlanta
2012

6

Introducing WebSphere Operational Decision Management

Contextual Decisions

Rules

WebSphere ILOG BRMS

Events

WebSphere Business Events

Situational Awareness

WebSphere Operational Decision Management for z/OS

Your business decisions.

Made by your business *experts*. Delivered in *real-time* by technology.

7

SHARE in Atlanta 2012

7

WebSphere Operational Decision Management

Components

WebSphere Operational Decision Management

WebSphere Decision Center

Decision Artifacts Versioning Access and Control

Repository

Define Deploy Update Measure

Visibility & Governance

WebSphere Decision Server

Rule Execution Event Execution Decision Monitoring Connectors

Management

Decision Center Console

Rule Solutions for Office

Decision Center for Business Space

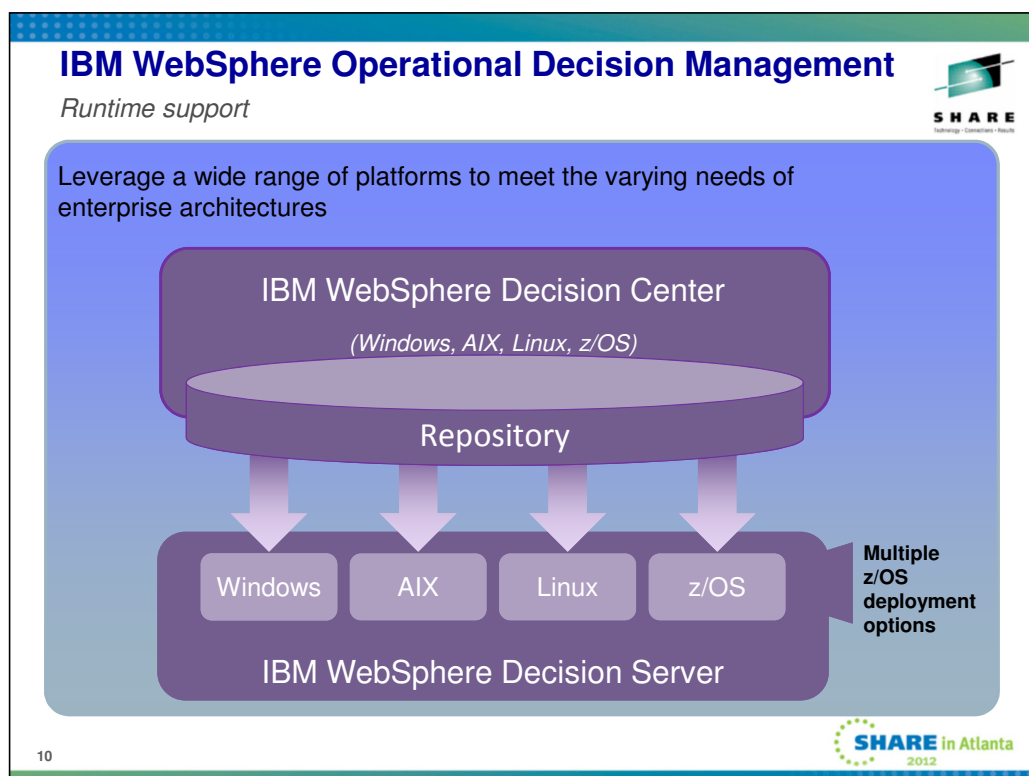
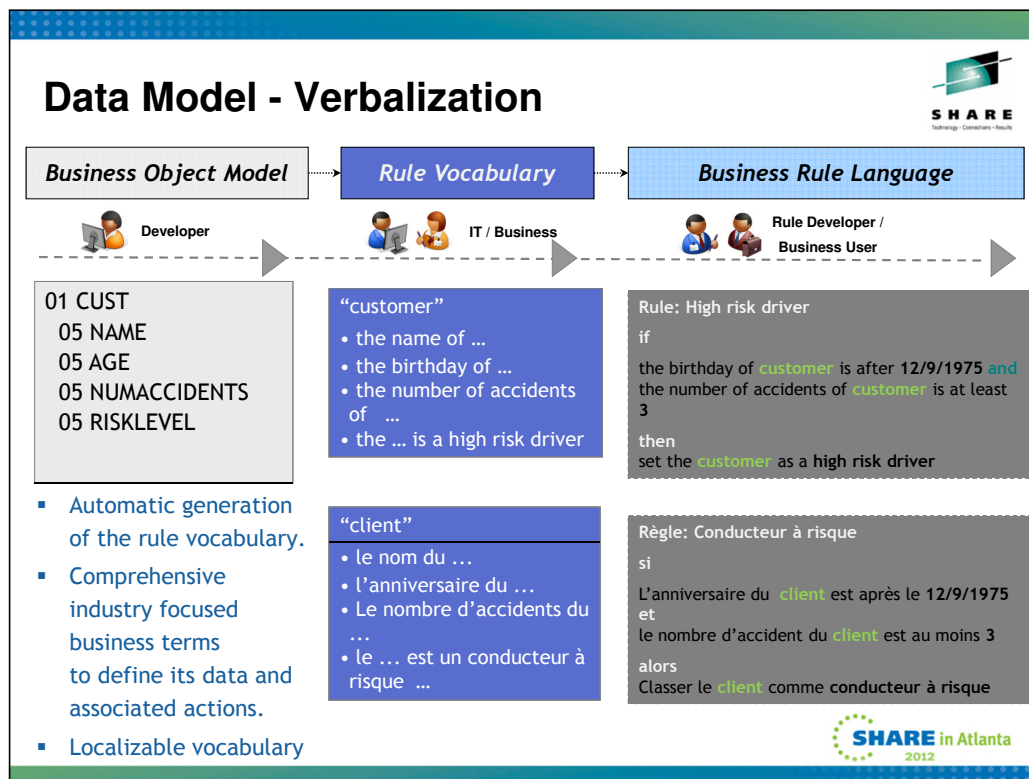
Design

Rule Designer Event Designer

8

SHARE in Atlanta 2012

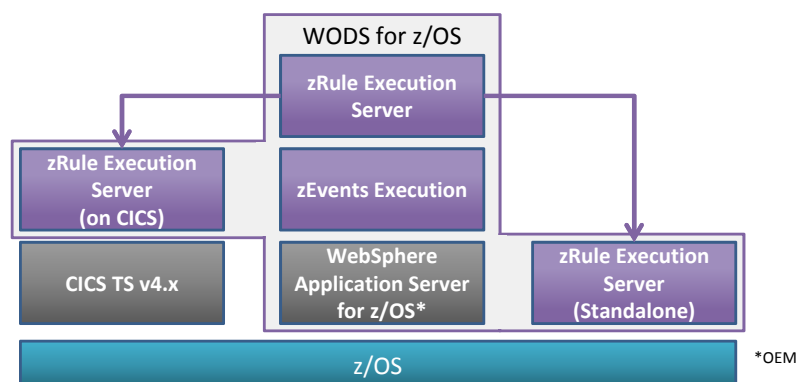
8



Decision Server for z/OS



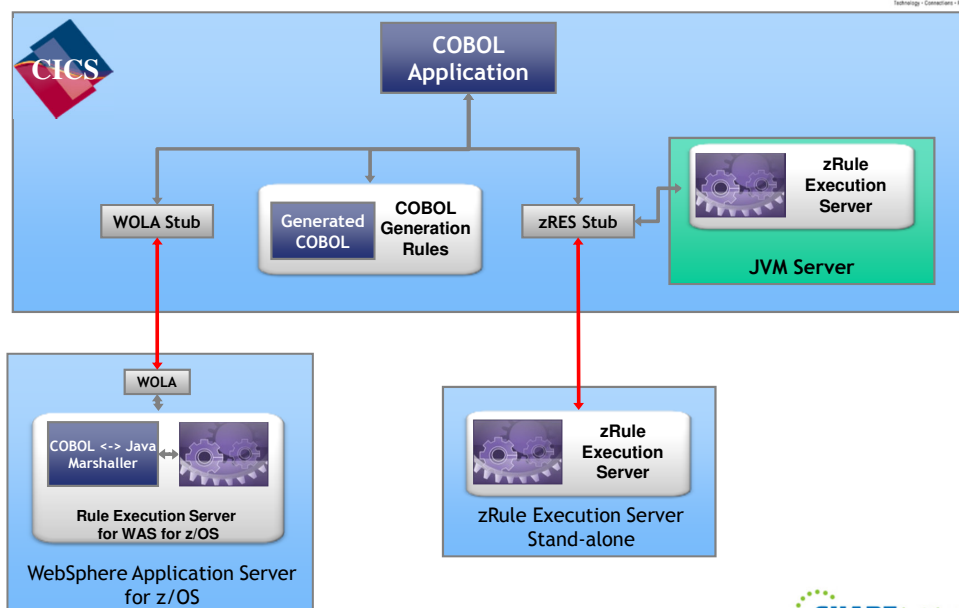
- Decisions can be invoked from existing CICS and batch applications
- Runtime support for COBOL data types
- Flexible runtime deployment to fit any System z environment:
 - Deployed on WebSphere Application Server for z/OS
 - Deployed standalone to z/OS
 - Deployed in CICS TS 4.x JVMServer environment



11

11

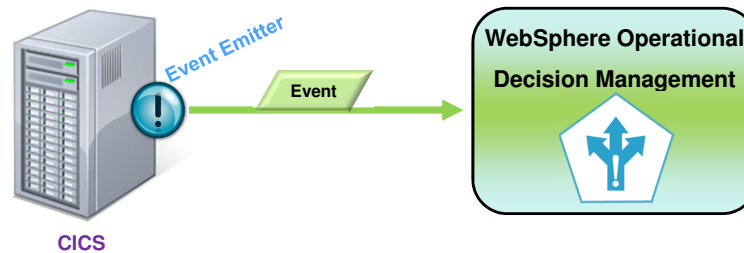
Rule invocation options for CICS



12

CICS + WebSphere ODM Events

With a minor amount of configuration (not coding), events can be automatically generated to WebSphere Operational Decision Management

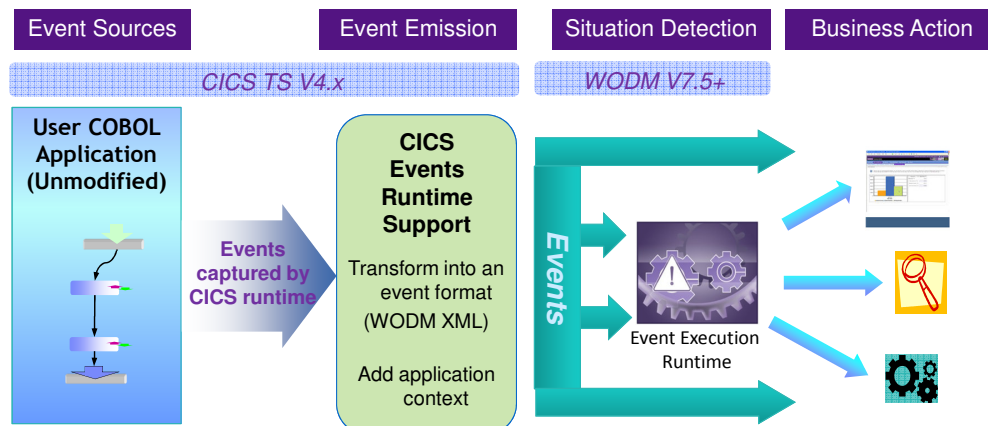


13

SHARE in Atlanta
2012

13

Events from CICS TS V4 with WODM



CICS Events help you to

- Observe business processes
- Recognize suspicious activity
- Drive new processing

14

SHARE in Atlanta
2012

14

CICS Developer Trial



Announced Jan 24th 2012, available from Jan 27th

- No charge trial, fixed expiry date
- Does not start SVC period
- For non-production environments
- Available through IBM ShopzSeries
- PID 5655-CIC

Based on CICS TS V4.2
(with restrictions)

- Performance
- Capacity
- License

<https://www.ibm.com/developerworks/connect/cicsdev>

15

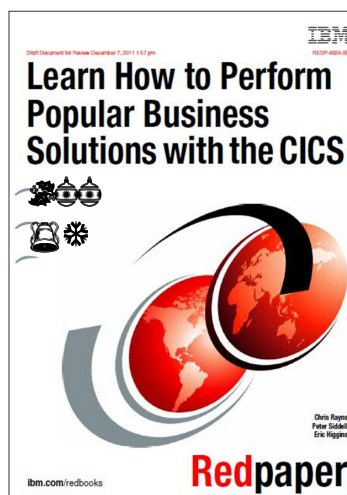


15

GENAPP – SupportPac and Redpaper



- **GENAPP is available to customers as SupportPac CB12, at no extra cost**
 - Download from <http://www-01.ibm.com/support/docview.wss?rs=1085&uid=swg24031760>
- **There is a paper based on GENAPP with scenarios in this new IBM Redpaper**
 - Download from <http://www.redbooks.ibm.com/abstracts/redp4824.html?Open>



16



16

New Redbook

- **IBM Redbooks**
 - [CICS Transaction Server from Start to Finish](#), SG24-7952-00

History of CICS and why it was created.

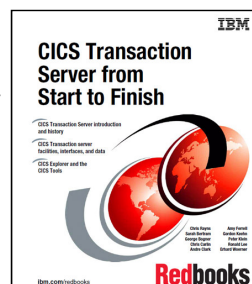
CICS architecture and discuss how to create an application in CICS.

Discuss the CICS-supported languages and each language's advantages.

Situations are analyzed from a system programmer's viewpoint, including:

-how the systems programmer can use CICS facilities and services to customize the system, design CICS for recovery, and manage performance.

-CICS Data access and where the data is stored, including Temporary storage queues, VSAM RLS, DB2, IMS™, and many others are also discussed.



"A very good book specially for beginners. Easy to understand. An easy way to learn certain functions"

"Great Redbook, I really love this idea and the book really covers everything you need to know about CICS TS, probably one of the best Redbooks I have seen, and I for sure will use it all the time"

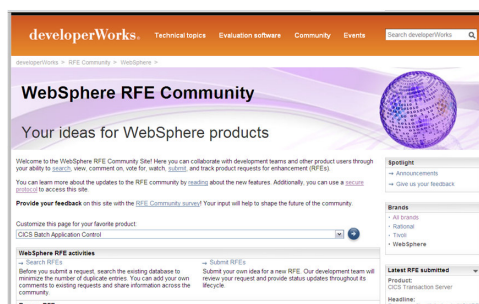


17

17

Raising new requirements with RFE

- **You can now raise and track requirements using the new IBM RFE system for**
 - CICS Transaction Server
 - CICS Explorer
 - TXSeries
 - WXTR
 - IBM CICS Tools
 - CICS Transaction Gateway
 - PD Tools - coming soon (target end Jan 2012)



- Existing FITS requirements are currently being processed, and will either be transferred to RFE or closed and returned.
- All brands <https://www.ibm.com/developerworks/rfe/> - select Brand: WebSphere
- WebSphere only https://www.ibm.com/developerworks/rfe/?BRAND_ID=181
- Select Product Family: Transaction Processing - for CICS Transaction Server, TXSeries, and WXTR
- Select Product Family: Enterprise Tooling - for the CICS Tools, CICS Transaction Gateway, and PD Tools
- Raise CICS Explorer base requirements against the Explorer component of CICS TS.
- Raise plug-in requirements against the Explorer component of related product.



18


18


Google us or check us out at:



 ibm/developerworks/cicsdev

 facebook.com/IBMCICS

 twitter.com/IBM_CICS


 youtube.com/cicsfluff

 youtube.com/cicsexplorer

 themasterterminal.com

 twitter.com/IBM_System_z

 CICS Explorer Forum
ibm.com/developerworks/forums/forum.jspa?forumID=1475&start=0

 CICS-L list Forum
listserv.uga.edu/archives/cics-l.html

