

Leveraging Situations Across Multiple ITM / OMEGAMON Environments

Wayne Bucek
IBM
March 13, 2012
Session Number 10881



Agenda

- Why Migrate Situations
- OMEGAMON XE Architecture
- Installation Aspects
- Mechanics of Situation Migration

What are Situations?

Storage Consumption - INSTANT-Z-POC - SYSADMIN

File Edit View Help

Navigator View: Physical

- XCF Paths Data for sysplex
- XCF Systems Data for Sysplex

Statistic Navigation

- Buffer Pool Management
- DB2 Connect Server
- EDM Pool
- Log Manager
- Storage Consumption**
- Subsystem Management
- System Status
- SQL Counts (1)

Critical

| | | |
|--------------------------------|-----------------|-------------------|
| Trans Rate Low | IPO1.CICS32 | 09/07/11 22:07:00 |
| Trans Rate Low | IPO1.CICS31 | 09/07/11 21:06:00 |
| KD5_Storage_Cushion_Warning | D81G:IPO1:DB2 | 09/07/11 19:00:09 |
| MQSeries_Queue_Manager_Problem | M60E:IPO1:MQESA | 09/01/11 12:39:25 |
| MQSeries_Queue_Manager_Problem | M60B:IPO1:MQESA | 09/01/11 12:39:25 |
| MQSeries_Queue_Manager_Problem | M60A:IPO1:MQESA | 09/01/11 12:39:25 |

KFWITM1011 Select workspace link button to view situation event results.

Physical

- DB2 Messages
- Volume Activity
- CICS Connections
- IMS Connections

32.341 (Getmained Storage (MB))

Getmained Storage (MB)
Variable Storage (MB)
Fixed Storage (MB)
Getmained Stack Storage (MB)
Storage Cushion (MB)

| 24 Bit Low Private (MB) | 24 Bit High Private (MB) | 31 Bit Extended Low Private (MB) | 31 Bit Extended High Private (MB) | Max Extended Region Size (MB) | Extended CSA Size (MB) |
|-------------------------|--------------------------|----------------------------------|-----------------------------------|-------------------------------|------------------------|
| 0.203 | 0.316 | 32.328 | 55.902 | 1,834.000 | 120.250 |

MVS Storage

| Auxiliary Storage In Use (MB) | Real Storage In Use (MB) |
|-------------------------------|--------------------------|
| 20 | 92 |

Real Storage

24 Bit Low Private (MB)
24 Bit High Private (MB)
31 Bit Extended Low Private (MB)
31 Bit Extended High Private (MB)
Max Extended Region Size (MB)
Extended CSA Size (MB)

Auxiliary Storage in Use (MB)
Real Storage in Use (MB)

Hub Time: Wed, 09/07/2011 10:18 PM

Server Available

Storage Consumption - INSTANT-Z-POC - SYSADMIN

Event Management Workspace

MQSeries_Queue_Manager_Problem - instant-Z-POC - SYSADMIN

File Edit View Help

Navigator

View: Physical

- Windows Systems
- z/OS Systems
 - PLEXCF:MVS:SYSPLEX
 - IPO1
 - MQSERIES
 - M60E:IPO1:MQESA
 - Queue Manager Status
 - MQSeries_Queue_Manager_Problem

Initial Situation Values

| QMgr Status | Origin Node | QMgr Name | Host Name | Start Date & Time | QMgr Type | DLQ Depth | DLQ Maximum | Monitored Queues | Local Queues | Remote Queues | Alias Queues | Transmit Queues | Predefine Queues |
|-------------|-----------------|-----------|-----------|-------------------|-----------|-----------|-------------|------------------|--------------|---------------|--------------|-----------------|------------------|
| Inactive | M60E:IPO1:MQESA | M60E | IPO1 | n/a | MVS | 0 | 0 | 0 | 0 | 0 | 0 | 0 | 0 |

Current Situation Values

| QMgr Status | Origin Node | QMgr Name | Host Name | Start Date & Time | QMgr Type | DLQ Depth | DLQ Maximum | Monitored Queues | Local Queues | Remote Queues | Alias Queues | Transmit Queues | Predefine Queues |
|-------------|-----------------|-----------|-----------|-------------------|-----------|-----------|-------------|------------------|--------------|---------------|--------------|-----------------|------------------|
| Inactive | M60E:IPO1:MQESA | M60E | IPO1 | n/a | MVS | 0 | 0 | 0 | 0 | 0 | 0 | 0 | 0 |

Command View

Take Action

Action

Name: <Select Action>

Command: <Select Action>

- MQ Resume Cluster Queue Manager
- MQ Start Channel
- MQ Stop Channel
- MQ Reset Channel

Destination Sy

- MQ Set Log (z/OS Only)
- MQ Set System (z/OS Only)
- MQ Set System Default (z/OS Only)

Expert Advice

Location: http://instant-z-poc:15200/classes/candle/kmq/resources/advice/en_US/MQSeries_Queue_Manager_Problem

MQSeries_Queue_Manager_Problem

[Situation Description](#) **Situation Description**

[Suggested Actions](#) A problem is detected in a queue manager.

Suggested Actions

Determine the cause for this alert from the QMgr Status column in the Formula view and take the appropriate corrective action. Check the Queue Manager Status workspace for data associated with this situation. Click the Queue Manager Status navigator item to

Done

Hub Time: Fri, 02/03/2012 05:14 PM Server Available MQSeries_Queue_Manager_Problem - instant-Z-POC - SYSADMIN



Situation Definition

- Proactive alerts
- Product Provided Situations
- Custom Situations
- Export supported via utility

Situations for - System Status

HTSN_DBA1_CDM_DUASPHBT_Elapsed_Time_W

HTSN_DBA1_CDM_DUASPPGA_Elapsed_Time_C

HTSN_DBA1_CDM_DUASPPGA_Elapsed_Time_W

HTSN_DBA1_CDM_DUASPWQH_Elapsed_Time_C

HTSN_DBA1_CDM_DUASPWQH_Elapsed_Time_W

HTSN_DBA1_CDM_DUASPYEL_Elapsed_Time_C

HTSN_DBA1_CDM_DUASPYEL_Elapsed_Time_W

HTSN_DBA1_CDM_DUCEL1_Elapsed_Time_C

HTSN_DBA1_CDM_DUCEL1_Elapsed_Time_W

HTSN_DBA1_CDM_OAOZST01_Elapsed_Time_W

HTSN_DBA1_CDM_OPCITDCN_Elapsed_Time_C

HTSN_DBA1_CDM_OPCITDCN_Elapsed_Time_W

HTSN_DBA1_CDM_PZMEM901_Elapsed_Time_C

HTSN_DBA1_CDM_PZMEM901_Elapsed_Time_W

HTSN_DBA1_CDM_PZMMCNT1_Elapsed_Time_C

HTSN_DBA1_CDM_PZMMCNT1_Elapsed_Time_W

HTSN_DBA1_CDM_PZMVDTPR_Elapsed_Time_C

HTSN_DBA1_CDM_PZMVDTPR_Elapsed_Time_W

HTSN_DBA2_Batch_PNA1_A2_ConnTy_Elaps_Time_W

HTSN_DBA2_Batch_PNA3_ConnTy_Elapsed_Time_W

HTSN_DBA2_OND_CBRIDBS_Elapsed_Time_W

HTSN_DBA2_OND_DSNACLI_Elapsed_Time_W

HTSN_DBA2_SASS_ConnTy_DB2CPU_Time_W

HTSN_DBA2_SASS_ConnTy_Elapsed_Time_W

HTSN_DBS1_SYS_KDP_BMTH_Critical

HTSN_DBS1_SYS_KDP_LOGN_Critical

HTSN_DBS1_SYS_KDP_TMAX_Critical

HTSN_DBS1_SYS_KDP_TMAX_Warning

Ilene's wait time critical

KD5_ARCM_Warning

KD5_CPU_Time_Warning

KD5_CTHD_Warning

Formula | Distribution | Expert Advice | Action | EIF | Until

Name
HTSN_DBS1_SYS_KDP_BMTH_Critical

Description
Buffer Pool approaching maximum size (GE 90%).

Formula

| | Utilization | Allocated Pages | GetPage Rate | Originating System ID | Pages In Use | Pool ID | Prefetch Request Rate |
|---|-------------|-----------------|--------------|-----------------------|--------------|----------|-----------------------|
| 1 | >= 90.0 | >= 0 | >= 0.0 | != 0 | >= 0 | != BP8K9 | >= 0.0 |
| 2 | | | | | | | |
| 3 | | | | | | | |

Formula editor

Click inside a cell of the formula editor to see a description of the attribute for that column and to compose the expression. To add an expression to the formula, take

Situation Formula Capacity 47% Add conditions... Advanced...

Sampling interval
0 : 0 : 5 : 0
ddd hh mm ss

Sound
 Enable critical.wav Play Edit...

State
Critical
 Run at startup

OK Cancel Apply Group... Help

HTSN_DBS1_SYS_KDP_BMTH_Critical

Situation Migration

- Moving ITM constructs across environments
- Large installations with multiple installed environments.
 - Suited for a common core group of situations
 - Huge productivity gains through reuse
- Development and deployment methodology
 - Would you develop a business application without moving the code through a development lifecycle?
 - Situations are no different



TEP - Terminology

File Edit View Help

Toolbar

Navigator

View zView

- zView
 - z/OS Plexes & Systems
 - DEMOPLX:MVS:SYSPLEX
 - Coupling Facility Policy Data for Sysplex
 - Coupling Facility Structures Data for Sysplex
 - Coupling Facility Systems Data for Sysplex
 - Global Enqueue Data for Sysplex
 - GRS Ring Systems Data for Sysplex
 - Report Classes Data for Sysplex
 - Resource Groups Data for Sysplex
 - Service Classes Data for Sysplex
 - Service Definition Data for Sysplex
 - Shared DASD Groups Data for Sysplex
 - XCF Groups Data for Sysplex
 - XCF Paths Data for Sysplex
 - XCF Systems Data for Sysplex
 - z/OS Management Console
 - MVSA
 - MVSB
 - MVSC
 - DB2PLEX
 - IMSA:MVSA:IMS

Physical

Navigator View

CPU Utilization by LPAR

View

Interfaces

TCP/IP Connections by LPAR

TCP Session Count

Interfac...

| System ID | Interface Name | Control |
|-----------|----------------|---------|
| MVSB | IUTSAMEH | Down |
| MVSB | TOVTAM | Down |

TCP/IP Stacks

21 (MVSC)

OSA Expre...

Kilobyte Rate Out Per Minute

TCP/IP Stack Details

| System ID | Receive Datagram Rate | Input Packet Count | Output Packet Count | Input Datagrams in Error | Input Discards |
|-----------|-----------------------|--------------------|---------------------|--------------------------|----------------|
| MVSB | 94 | 3948947 | 2938377 | 0 | 804046 |

OSA Express by LPAR Details

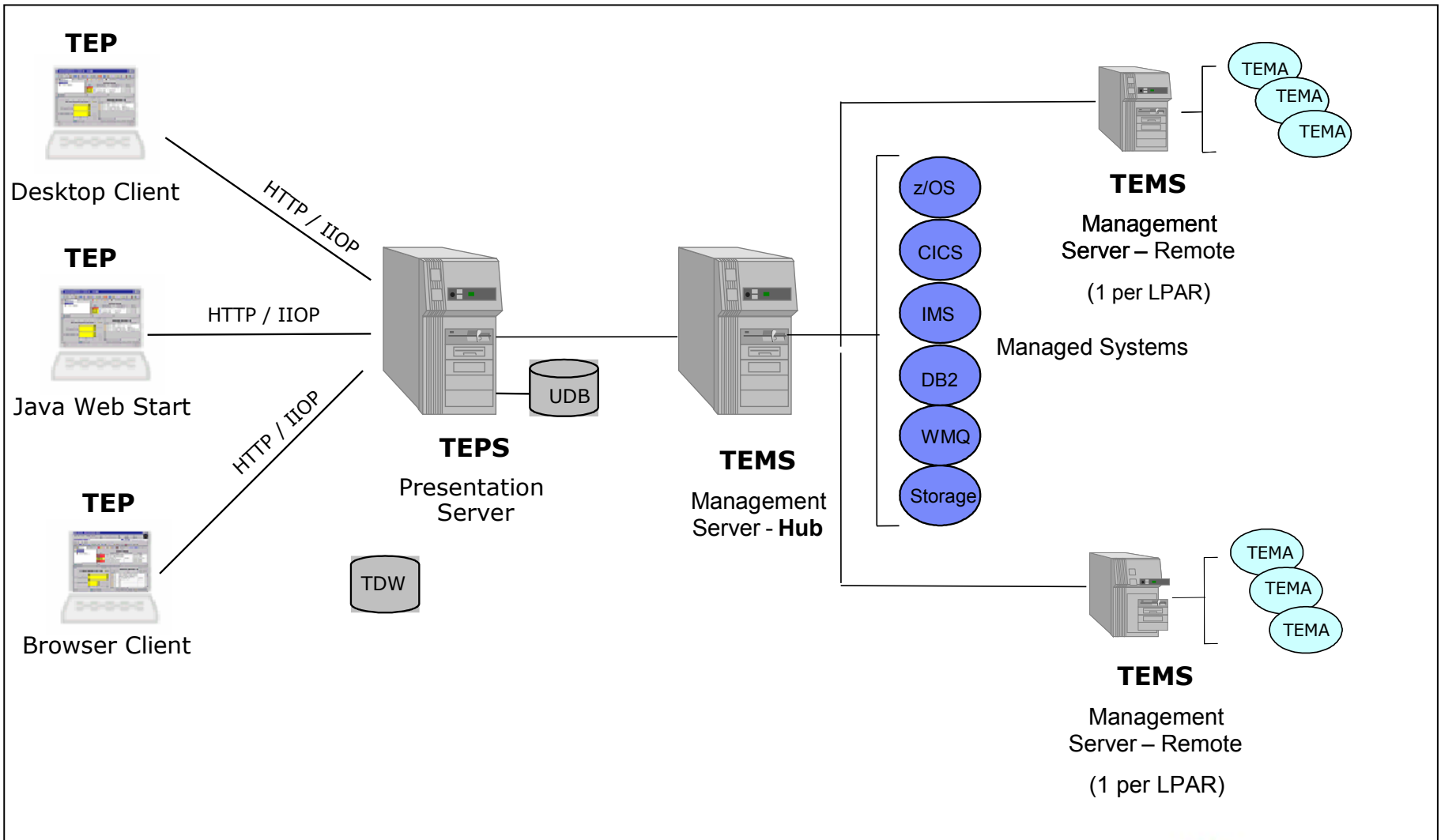
| LPAR Name | LPAR Number | Kilobyte Rate In Per Minute | Kilobyte Rate Out Per Minute | Processor Utilization Per Five Minutes | Kilobyte Ir Per Five |
|-----------|-------------|-----------------------------|------------------------------|--|----------------------|
| CF | 1 | 2 | 2 | 0 | |

Workspace

Hub Time: Tue, 02/10/2009 01:50 PM Server Available IP Stacks and OSA cross LPAR - tivteps.demopkg.lib



OMEGAMON Architecture



Within A Single OMEGAMON Environment

- CAT / ATR files
- Version of agents
- Mixed bag OK!
- Multi-Agent versioning support

The screenshot displays the OMEGAMON System Status interface. Key components include:

- Navigator:** Shows a tree view of system components like XCF Systems Data for Sysplex, PNA1, DB2, and NDA1:PNA1:DB2. A red box highlights the 'System Status' option with the text 'Version Aware' overlaid.
- Statistic Navigation:** Contains buttons for Buffer Pool Management, DB2 Connect Server, EDM Pool, Log Manager, Storage Consumption, Subsystem Management, System Status (selected), and SQL Counts (1).
- System Key Events:** A chart showing event counts over time. A legend includes: Threads Waiting On Limit, Users Waiting For Threads, Threads Waiting On Locks, In Doubt Threads, Lock Escalation Exclusive, and Lock Escalation Shared.
- Thread Events Approaching Max:** A chart showing thread counts. A large red 'SQL Errors!' annotation is placed over this chart.
- Performance Gauges:** Four semi-circular gauges for DDF Send Rate, DDF Receive Rate, EDM Utilization, and DBAT Wait Percent, all showing 0.0.
- System Key Events Table:**

| Time Stamp | Threads Waiting On Limit | Users Waiting For Threads | Threads Waiting On Locks | In Doubt Threads | Lock Escalation Exclusive |
|--------------------|--------------------------|---------------------------|--------------------------|------------------|---------------------------|
| [Empty table body] | | | | | |
- System State Information Table:**

| Time Stamp | Interval Time | Waiting On Tape Mount | DDF Inactive | Global Trace Active | EDM Utilization | Database Wait Percent |
|--------------------|---------------|-----------------------|--------------|---------------------|-----------------|-----------------------|
| [Empty table body] | | | | | | |
- Operating System CPU Table:**

| Number of CPU on LPAR | CPU Utilization LPAR | CPU Utilization DB2 | CPU Utilization DB2 MSTR | CPU Utilization DB2 DBM1 |
|-----------------------|----------------------|---------------------|--------------------------|--------------------------|
| [Empty table body] | | | | |
- Operating System CPU Utilization Chart:** A bar chart showing CPU utilization for LPAR, DB2, DB2 MSTR, and DB2 DBM1.

Improved in v510



Implementation Aspects

- Application Support
- Match z/OS agent version
- New attribute → SMP/e PTF
- Corresponding fixpack to Application Support

Locating ITM Workspace Application Support Files for z/OS Agents



Technote (troubleshooting)

Problem(Abstract)

This technote addresses the commonly asked question of where can workspace application support files be found for z/OS Agents.

Resolving the problem

Before you can view data collected by monitoring agents, you must install application support for the agents on the Tivoli Enterprise Portal Server and on the hub Tivoli Enterprise Monitoring Server. When you install application support on the Tivoli Enterprise Portal Server, you are installing the files required for presenting workspaces and online help for each monitoring agent. When you install application support on the hub monitoring server, you are installing the files required for product-provided situations, situation distributions, and other product-specific data. Installing application support on the hub monitoring server is also known as "seeding" the hub.

Most z/OS-based agents provide application support files on CDs or DVDs, which are separate from the mainframe installation media. Distributed agents include their application support files in the distributed installation process. Each CD /DVD that contains application support files is listed below, with information about which products use the CD /DVD and where the CD / DVD can be found. The latest level in fulfillment is the CD /DVD on this list. Where possible, IBM provides both .zip and .tar formats, as well as .iso format, so that a physical CD / DVD can be created.

Please note that the IBM Tivoli Monitoring (ITM) media is separate from the workspace application support files which are included with products that run in the ITM environment. ITM can be obtained by ordering either 5724-C04 IBM Tivoli Monitoring through Passport Advantage or the no charge 5698-A79 IBM Tivoli Management Services on z/OS through Shop zSeries. Your IBM rep can ask Techline to configure and submit the order as well. 5698-A79 includes the server, engine, and configurator on z/OS. Workspace application support files may have their own fixpacks which are separate and distinct from any ITM fixpacks. Fixpacks can be found on the product support urls at: http://www-306.ibm.com/software/support/index_A_Z.html.

The [LCD7-2600-00](#) IBM Tivoli OMEGAMON Data Files for z/OS is the latest level available of the application support DVD for the OMEGAMON XE V5.1 products. This DVD contains application support files for the following products:

Document information

[Tivoli OMEGAMON XE on z/OS](#)

Software version:

4.1.0, 4.2

Operating system(s):

Windows, z/OS

Reference #:

1255545

Modified date:

2011-04-21

Translate my page

Select Language

Availability notice

→ Alert: Access to entitled documents will be temporarily unavailable during September 10 - 11

Implementation Aspects

- Fixpack description
- Read me
- PTF Hold Data
- Cross referenced information
- Needed until SDA available

```
=====
1.3 Backward compatibility with prior version of this product
=====
```

This maintenance update requires installation of IBM Tivoli OMEGAMON XE for DB2 Performance Expert (Monitor) V510 PTF as follows:

UK69486

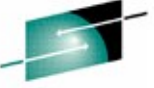
```

File Edit Edit_Settings Menu Utilities Compilers Test Help
VIEW      PKG.HEADERS.DATA(UK69486) - 01.00          Columns 00001 00072
Command ==>                                     Scroll ==> CSR
000496 ** HOLD(UK69486) SYS FMID(HKDB510) REASON(DOWNLD) DATE(11187)
000497      COMMENT
000498      (*****
000499      * FUNCTION AFFECTED: OMEGAMON XE for DB2 PE and PM          *
000500      *                      TEMS, TEPS, TEP on distributed platforms *
000501      * *****
000502      * DESCRIPTION          : TEP fixpack download                *
000503      * *****
000504      *
000505      * Note: This download action does not apply to users of      *
000506      * Data Studio Workbench feature.                             *
000507      *
000508      * The IBM Software Support Web site provides the latest      *
000509      * information about fixpacks. You can view this information   *
000510      * on the following Web site:                                  *
000511      * http://www-306.ibm.com/software/sysmgmt/products/support/  *
000512      *
000513      * The latest fixpack 5.1.0-TIV-KD5-IF0001                    *
000514      * which is prerequisite for this PTF is also available     *
000515      * from this Web site.                                         *

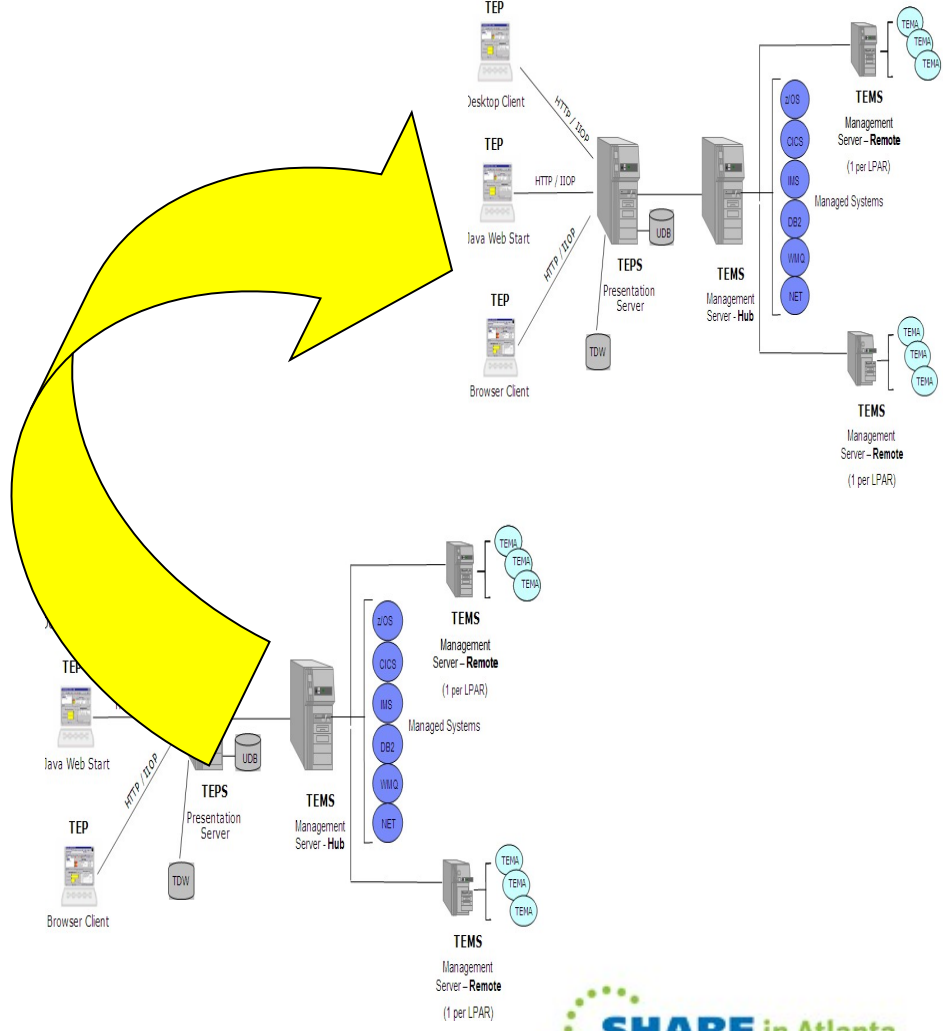
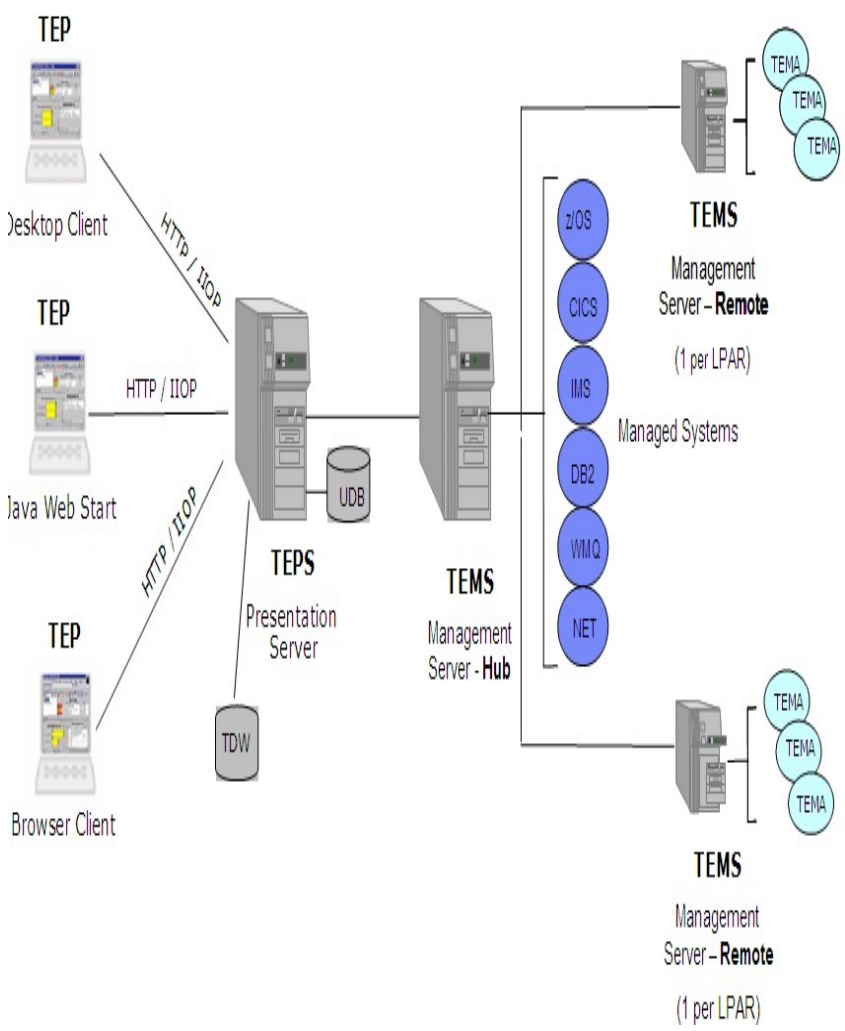
```

MQ a

04/015



Compatible Environments



Leveraging Situations Across Environments

- Great productivity gain
- Technically feasible
- Compatible environments
- Hub-level installation mechanism
- Scalable to 10K endpoints
- Multiple environments not governed by an install mechanism

Procedures to ensure compatible target system!

Tools are available

ITM 623 Installed Catalogs

Manage Tivoli Enterprise Monitoring Servers - Enterprise Catalogs - instant-Z-POC - SYSADMIN

File Edit View Help

Navigator View: Physical

Enterprise Linux Systems

Query Editor

Installed Catalogs - Enterprise View

Page: 1 of 2

| Catalog | Status | Server Name | HUB Timestamp | Server Timestamp | HUB Column Count | Server Column Count |
|---------|--------|-------------|---------------|------------------|------------------|---------------------|
| | | | | 7/05 15:54:26 | Not Available | 263 |
| | | | | 7/05 15:54:26 | Not Available | 205 |
| | | | | 7/05 15:54:26 | Not Available | 75 |
| | | | | 7/05 15:54:26 | Not Available | 166 |
| | | | | 7/05 15:54:26 | Not Available | 101 |
| | | | | 7/05 15:54:26 | Not Available | 269 |
| | | | | 7/05 15:54:26 | Not Available | 53 |
| | | | | 7/05 15:54:26 | Not Available | 197 |
| | | | | 1/11 22:27:06 | Not Available | 1084 |
| | | | | 4/09 17:19:42 | 410 | 410 |
| | | | | N/A | 193 | Not Available |
| | | | | N/A | 2341 | Not Available |
| | | | | 6/10 11:39:28 | 163 | 163 |
| | | | | 5/96 13:58:14 | 8 | 8 |
| | | | | 0/99 12:34:00 | 18 | 18 |
| | | | | 6/11 20:05:56 | 94 | 97 |
| | | | | N/A | 2692 | Not Available |
| | | | | 2/11 05:47:12 | 874 | 905 |
| | | | | 4/09 17:19:41 | 96 | 96 |
| | | | | 4/09 17:19:38 | 2348 | 2348 |
| | | | | 1/95 14:16:02 | 4 | 4 |
| | | | | N/A | 3842 | Not Available |
| | | | | 4/11 12:07:43 | 1778 | 1780 |
| | | | | N/A | 1998 | Not Available |
| | | | | 4/09 17:19:44 | 698 | 698 |
| | | | | 5/96 13:58:14 | 1 | 1 |
| | | | | 4/11 14:15:17 | Not Available | 431 |
| | | | | 4/11 14:17:18 | Not Available | 247 |
| | | | | 4/11 14:18:55 | Not Available | 155 |

Description

Description: Compare the catalogs installed at every TEMS in the Enterprise.

Data Source: [TEMS IPO1:TEMS ip.pipe:#9.42.62.36\[2018\]](#)

Last Modified

Last Modified on: Mon, 02/23/2009 11:39 AM

Last Modified by: SYSADMIN

Specification

| | fx Server Name | fx Catalog | fx Server Column Count | fx HUB Column Count | fx HUB Timestamp | fx Status | fx Server Timestamp |
|---|-------------------------------------|-------------------------------------|-------------------------------------|-------------------------------------|-------------------------------------|-------------------------------------|-------------------------------------|
| 1 | <input checked="" type="checkbox"/> | <input checked="" type="checkbox"/> | <input checked="" type="checkbox"/> | <input checked="" type="checkbox"/> | <input checked="" type="checkbox"/> | <input checked="" type="checkbox"/> | <input checked="" type="checkbox"/> |
| 2 | | | | | | | |
| 3 | | | | | | | |
| 4 | | | | | | | |

Add attributes... Advanced...

OK Cancel Help

KFWITM234W Query is not editable. Use Create Another to make an editable copy.



Application Support Workspace

Application Support Levels - instant-Z-POC - SYSADMIN

File Edit View Help

Managed System Status

| Name | Product | Version | Managing System |
|------------------------------|---------|----------|--------------------------|
| M5091:tems | EM | 06.22.02 | tM5091:tems |
| BROKER4::KQIB | QI | 07.00.02 | WinDevSvr:KQIA |
| BROKER4::MQ | MQ | 07.00.01 | REMOTE_WINDEVSVR |
| CANSN3:IPO1:KN3AGENT | N3 | 04.20.03 | IPO1:TEMS |
| CANSN3:IPO2:KN3AGENT | N3 | 04.20.03 | IPO1:TEMS |
| DB1G:DB2plex:DSGROUP | D5 | 04.20.00 | DB2plex:DB2plex:Plexview |
| DB2plex:DB2plex:Plexview | D5 | 04.20.00 | IPO1:TEMS |
| D81G:IPO1:DB2 | D5 | 05.10.00 | XEDB2:IPO1 |
| Instant-Z-POCASFSDp:UAGENT00 | UA | 06.00.00 | INSTANT-Z-POC:UA |
| IBM-575862CEB81:TEPS | CQ | 06.23.00 | IPO1:TEMS |
| IBM-575862CEB81:Warehouse | HD | 06.23.00 | IPO1:TEMS |
| IBM-8CA0616686E::CONFIG | CF | 07.00.01 | REMOTE_IBM-8CA0616686E |
| IMSplex:IMSplex:Plexview | IP | 04.20.00 | IPO1:TEMS |
| IMS9:IPO1:IMS | IP | 04.20.00 | XEIMS:IPO1:MVS |
| INSTANT-Z-POC:UA | UM | 06.22.01 | IPO1:TEMS |
| INSTANT-Z-POC:Warehouse | HD | 06.22.02 | IPO1:TEMS |
| IPO1.AR | CP | 04.20.00 | RKCPXM00:IPO1:CPIRA |
| IPO1.CICS32 | CP | 04.20.00 | RKCPXM00:IPO1:CPIRA |
| IPO1.TR | CP | 04.20.00 | RKCPXM00:IPO1:CPIRA |
| IPO2:TEMS | EM | 06.23.00 | IPO2:TEMS |
| NET | WO | 03.00.00 | IPO1:K36MVAP:KWOSDI |
| OMCICS | WO | 03.00.00 | IPO1:K36MVAP:KWOSDI |
| OMDB2 | WO | 03.00.00 | IPO1:K36MVAP:KWOSDI |
| OMMVS | WO | 03.00.00 | IPO1:K36MVAP:KWOSDI |
| OMMVSCUA | WO | 03.00.00 | IPO1:K36MVAP:KWOSDI |
| OMSTOR | WO | 03.00.00 | IPO1:K36MVAP:KWOSDI |
| Primary:INSTANT-Z-POC:NT | NT | 06.22.01 | IPO1:TEMS |
| Primary:WINDEVSVR:NT | NT | 06.22.01 | REMOTE_WINDEVSVR |
| PLEXCF:IPO2:MVSSYS | M5 | 04.20.00 | IPO2:TEMS |
| REMOTE_IBM-8CA0616686E | EM | 06.22.00 | REMOTE_IBM-8CA0616686E |
| REMOTE WINDEVSVR | EM | 06.22.02 | REMOTE WINDEVSVR |

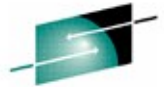
TEPS Application Support File Levels

| FILENAME | FILEAPPL | PROJ | APPL |
|-------------------------|----------|--------------|------|
| C:\IBM\ITM\CNPS\ldocaba | ABA | ABA,06.01.00 | ABA |
| C:\IBM\ITM\CNPS\ldocabh | ABH | ABH,06.01.00 | ABH |
| C:\IBM\ITM\CNPS\ldocama | AMA | AMA,06.01.00 | AMA |
| C:\IBM\ITM\CNPS\ldocamb | AMB | AMB,06.01.00 | AMB |
| C:\IBM\ITM\CNPS\ldocamd | AMD | AMD,06.01.00 | AMD |
| C:\IBM\ITM\CNPS\ldocamn | AMN | AMN,06.01.00 | AMN |
| C:\IBM\ITM\CNPS\ldocams | AMS | AMS,06.01.00 | AMS |
| C:\IBM\ITM\CNPS\ldocamw | AMW | AMW,06.01.00 | AMW |
| C:\IBM\ITM\CNPS\ldocamx | AMX | AMX,06.01.00 | AMX |
| C:\IBM\ITM\CNPS\ldocbiw | BIW | BIW,06.01.00 | BIW |
| C:\IBM\ITM\CNPS\ldocbix | BIX | BIX,06.01.00 | BIX |
| C:\IBM\ITM\CNPS\ldocctd | CTD | CTD,06.01.00 | CTD |
| C:\IBM\ITM\CNPS\ldoccto | CTO | CTO,06.01.00 | CTO |
| C:\IBM\ITM\CNPS\ldocctq | CTQ | CTQ,06.01.00 | CTQ |
| C:\IBM\ITM\CNPS\ldocctr | CTR | CTR,06.01.00 | CTR |
| C:\IBM\ITM\CNPS\ldocctw | CTW | CTW,06.01.00 | CTW |
| C:\IBM\ITM\CNPS\ldoccty | CTY | CTY,06.01.00 | CTY |
| C:\IBM\ITM\CNPS\ldocgms | GMS | GMS,06.01.00 | GMS |
| C:\IBM\ITM\CNPS\ldocgwa | GWA | GWA,06.01.00 | GWA |
| C:\IBM\ITM\CNPS\ldocgwi | GWI | GWI,06.01.00 | GWI |
| C:\IBM\ITM\CNPS\ldocgwl | GWL | GWL,06.01.00 | GWL |
| C:\IBM\ITM\CNPS\ldocgwp | GWP | GWP,06.01.00 | GWP |
| C:\IBM\ITM\CNPS\ldociqs | IQS | IQS,06.01.00 | IQS |
| C:\IBM\ITM\CNPS\ldociqy | IQY | IQY,06.01.00 | IQY |
| C:\IBM\ITM\CNPS\ldociqz | IQZ | IQZ,06.01.00 | IQZ |
| C:\IBM\ITM\CNPS\ldociud | IUD | IUD,06.01.00 | IUD |
| C:\IBM\ITM\CNPS\ldociui | IUI | IUI,06.01.00 | IUI |
| C:\IBM\ITM\CNPS\ldocivd | IVD | IVD,06.01.00 | IVD |
| C:\IBM\ITM\CNPS\ldocivi | IVI | IVI,06.01.00 | IVI |
| C:\IBM\ITM\CNPS\ldocixa | IXA | IXA,06.01.00 | IXA |
| C:\IBM\ITM\CNPS\ldocixb | IXB | IXB,06.01.00 | IXB |

Hub TEMS C...

| APPL NAME | TIMESTAMP |
|-----------|------------------|
| KCF | 1091221100852000 |
| KDO | 1070717113748000 |
| KDP | 1101214160658000 |
| KDY | 1100526113928000 |
| KFA | 0960815135814000 |
| KFW | 0990320123400000 |
| KHD | 1091109164338000 |
| KIP | 1111027085209000 |
| KLZ | 1091028203416000 |
| KMC | 1091221100851000 |
| KMQ | 1101230021223000 |
| KMS | 0950321141602000 |
| KM5 | 1100721073450000 |
| KNT | 1091106121433000 |
| KN3 | 1110928155538000 |
| KQI | 1101230021230000 |
| KQM | 0960815135814000 |
| KSD | 1050714084358000 |
| KS3 | 1111101172923000 |
| KUM | 1050221122146070 |
| KVL | 1080710190902000 |
| MV | 1050910101517000 |
| OMCICS | 1110601172956000 |
| OMSMS | 1071010143900000 |
| O4SRV | 1110818220600000 |
| PDSSTATS | 0970213113947000 |
| SYSTEM | 1110330063500000 |
| UAG00 | 1090601120328000 |

Hub Time: Mon, 01/30/2012 02:11 PM Server Available Application Support Levels - instant-Z-POC - SYSADMIN



Application Support Custom SQL

Properties - Application Support Levels

Enterprise

- Views
 - Table Views
 - Managed System Status
 - TEPS Application Support File Levels**
 - Hub TEMS Catalog File Levels

Preview

TEPS Application Support File Levels

| FILENAME | FILEAPPL | PROJ | APPL |
|------------------------|----------|--------------|------|
| C:\IBM\ITM\CNPS\docaba | ABA | ABA,06.01.00 | ABA |
| C:\IBM\ITM\CNPS\docabh | ABH | ABH,06.01.00 | ABH |
| C:\IBM\ITM\CNPS\docama | AMA | AMA,06.01.00 | AMA |
| C:\IBM\ITM\CNPS\docamb | AMB | AMB,06.01.00 | AMB |

Click here to assign a query.

Description

Name:

Description:

Formula

`select * from TEPS.KFWFOUNDODI`

View-level Page Size

Use default 100 rows will be returned as a page
 Return all rows
 Number of rows to return:

ITMSuper Configuration Tool

TEPS Applications Versions

| Application | Application ID | Version | TEPS File Date | TEPS Seed Date | HUB Date |
|-------------|-----------------|----------|------------------------------|------------------------------|-------------------|
| ABA | ABA | 06.01.00 | Sun Jun 12 02:02:17 CDT 2011 | Sat Jun 11 20:22:34 CDT 2011 | Missing at HUB |
| ABH | ABH | 06.01.00 | Sun Jun 12 02:02:17 CDT 2011 | Sat Jun 11 20:22:35 CDT 2011 | Missing at HUB |
| AMA | AMA | 06.01.00 | Sun Jun 12 02:02:17 CDT 2011 | Sat Jun 11 20:22:35 CDT 2011 | Missing at HUB |
| AMB | AMB | 06.01.00 | Sun Jun 12 02:02:17 CDT 2011 | Sat Jun 11 20:22:35 CDT 2011 | Missing at HUB |
| AMD | AMD | 06.01.00 | Sun Jun 12 02:02:17 CDT 2011 | Sat Jun 11 20:22:35 CDT 2011 | Missing at HUB |
| AMN | AMN | 06.01.00 | Sun Jun 12 02:02:17 CDT 2011 | Sat Jun 11 20:22:35 CDT 2011 | Missing at HUB |
| AMS | AMS | 06.01.00 | Sun Jun 12 02:02:17 CDT 2011 | Sat Jun 11 20:22:35 CDT 2011 | Missing at HUB |
| AMW | AMW | 06.01.00 | Sun Jun 12 02:02:17 CDT 2011 | Sat Jun 11 20:22:35 CDT 2011 | Missing at HUB |
| AMX | AMX | 06.01.00 | Sun Jun 12 02:02:17 CDT 2011 | Sat Jun 11 20:22:35 CDT 2011 | Missing at HUB |
| BIW | BIW | 06.01.00 | Sun Jun 12 02:02:17 CDT 2011 | Sat Jun 11 20:22:35 CDT 2011 | Missing at HUB |
| BIX | BIX | 06.01.00 | Sun Jun 12 02:02:17 CDT 2011 | Sat Jun 11 20:22:35 CDT 2011 | Missing at HUB |
| CTD | CTD | 06.01.00 | Sun Jun 12 02:02:17 CDT 2011 | Sat Jun 11 20:22:39 CDT 2011 | Missing at HUB |
| CTO | CTO | 06.01.00 | Sun Jun 12 02:02:17 CDT 2011 | Sat Jun 11 20:22:40 CDT 2011 | Missing at HUB |
| CTQ | CTQ | 06.01.00 | Sun Jun 12 02:02:17 CDT 2011 | Sat Jun 11 20:22:42 CDT 2011 | Missing at HUB |
| CTR | CTR | 06.01.00 | Sun Jun 12 02:02:17 CDT 2011 | Sat Jun 11 20:22:42 CDT 2011 | Missing at HUB |
| CTW | CTW | 06.01.00 | Sun Jun 12 02:02:17 CDT 2011 | Sat Jun 11 20:22:43 CDT 2011 | Missing at HUB |
| CTY | CTY | 06.01.00 | Sun Jun 12 02:02:17 CDT 2011 | Sat Jun 11 20:22:43 CDT 2011 | Missing at HUB |
| GMS | GMS | 06.01.00 | Sun Jun 12 02:02:17 CDT 2011 | Sat Jun 11 20:22:44 CDT 2011 | Missing at HUB |
| GWA | GWA | 06.01.00 | Sun Jun 12 02:02:17 CDT 2011 | Sat Jun 11 20:22:44 CDT 2011 | Missing at HUB |
| GWI | GWI | 06.01.00 | Sun Jun 12 02:02:17 CDT 2011 | Sat Jun 11 20:22:44 CDT 2011 | Missing at HUB |
| GWL | GWL | 06.01.00 | Sun Jun 12 02:02:17 CDT 2011 | Sat Jun 11 20:22:45 CDT 2011 | Missing at HUB |
| GWP | GWP | 06.01.00 | Sun Jun 12 02:02:17 CDT 2011 | Sat Jun 11 20:22:45 CDT 2011 | Missing at HUB |
| IQS | IQS | 06.01.00 | Sun Jun 12 02:02:16 CDT 2011 | Sat Jun 11 20:22:46 CDT 2011 | Missing at HUB |
| IQY | IQY | 06.01.00 | Sun Jun 12 02:02:16 CDT 2011 | Sat Jun 11 20:22:47 CDT 2011 | Missing at HUB |
| IQZ | IQZ | 06.01.00 | Sun Jun 12 02:02:16 CDT 2011 | Sat Jun 11 20:22:47 CDT 2011 | Missing at HUB |
| IUD | IUD | 06.01.00 | Sun Jun 12 02:02:16 CDT 2011 | Sat Jun 11 20:22:48 CDT 2011 | Missing at HUB |
| IUI | IUI | 06.01.00 | Sun Jun 12 02:02:16 CDT 2011 | Sat Jun 11 20:22:48 CDT 2011 | Missing at HUB |
| IVD | IVD | 06.01.00 | Sun Jun 12 02:02:16 CDT 2011 | Sat Jun 11 20:22:48 CDT 2011 | Missing at HUB |
| IVI | IVI | 06.01.00 | Sun Jun 12 02:02:16 CDT 2011 | Sat Jun 11 20:22:49 CDT 2011 | Missing at HUB |
| IXA | IXA | 06.01.00 | Sun Jun 12 02:02:16 CDT 2011 | Sat Jun 11 20:22:49 CDT 2011 | Missing at HUB |
| IXB | IXB | 06.01.00 | Sun Jun 12 02:02:16 CDT 2011 | Sat Jun 11 20:22:49 CDT 2011 | Missing at HUB |
| IXT | IXT | 06.01.00 | Sun Jun 12 02:02:16 CDT 2011 | Sat Jun 11 20:22:50 CDT 2011 | Missing at HUB |
| IYM | IYM | 06.01.00 | Sun Jun 12 02:02:16 CDT 2011 | Sat Jun 11 20:22:50 CDT 2011 | Missing at HUB |
| IZY | IZY | 06.01.00 | Sun Jun 12 02:02:16 CDT 2011 | Sat Jun 11 20:22:51 CDT 2011 | Missing at HUB |
| KA4 | KA4 | 6.2.0 | Sun Jun 12 02:00:34 CDT 2011 | Sat Jun 11 20:22:15 CDT 2011 | Missing at HUB |
| KCF | KCF | 7.0.1 | Sun Jun 12 02:44:10 CDT 2011 | Sat Jun 11 20:46:45 CDT 2011 | 08/15/08 23:28:51 |
| KDP | KDP | 5.1.0 | Sun Jun 12 02:31:48 CDT 2011 | Sat Jun 11 20:35:29 CDT 2011 | 09/23/09 18:51:10 |
| KDY | KDY | 01.00.00 | Sun Jun 12 02:00:45 CDT 2011 | Sat Jun 11 20:22:16 CDT 2011 | Missing at HUB |
| KGW | KGW | 4.2.0 | Sun Jun 12 02:56:33 CDT 2011 | Sat Jun 11 21:02:19 CDT 2011 | Missing at HUB |
| KHD | KHD | 6.2.2 | Sun Jun 12 02:01:01 CDT 2011 | Sat Jun 11 20:22:16 CDT 2011 | Missing at HUB |
| KIP | KIP | 4.2.0 | Sun Jun 12 02:56:35 CDT 2011 | Sat Jun 11 21:02:33 CDT 2011 | 08/14/09 15:36:11 |
| KLZ | KLZ | 6.2.0 | Sun Jun 12 02:02:04 CDT 2011 | Sat Jun 11 20:22:20 CDT 2011 | Missing at HUB |
| KM5 | KM5 | 4.2.0 | Sun Jun 12 02:56:38 CDT 2011 | Sat Jun 11 21:02:45 CDT 2011 | 10/28/09 08:26:11 |
| KMC | Missing at TEPS | | | | 08/15/08 23:28:50 |

- Green – In Sync
- Yellow – Missing at Hub
- Red – Missing at TEPS

ITMSuper Configuration Tool



SHARE
Technology • Connections • Results

| K:CMS | 1.515 Seconds V5 | L:CMS | 1.578 Seconds V5 | PNA1:CMS | 1.406 Seconds V5 | PNA2:CMS | 2.765 Seconds V5 | PNA3:CMS | 0.938 Seconds V5 |
|--------------|------------------------|--------------|------------------------|--------------|------------------------|--------------|------------------------|--------------|------------------------|
| No of Apps | = 19 | No of Apps | = 19 | No of Apps | = 18 | No of Apps | = 18 | No of Apps | = 18 |
| KCF [1] | 08/15/08 23:28:51 | KCF [1] | 08/15/08 23:28:51 | KAH [1] | 07/13/09 15:52:08 | KAH [1] | 07/13/09 15:52:08 | KAH [1] | 07/13/09 15:52:08 |
| KDP [1] | 09/23/09 18:51:10 | KDP [1] | 09/23/09 18:51:10 | KCF [1] | 11/16/09 03:46:36 | KCF [1] | 11/16/09 03:46:36 | KCF [1] | 11/16/09 03:46:36 |
| KDY [1] | 10/03/08 17:30:45 | KDY [1] | 10/03/08 17:30:45 | KDP [1] | 09/16/10 16:37:45 | KDP [1] | 09/16/10 16:37:45 | KDP [1] | 09/16/10 16:37:45 |
| KFA [1] | 08/15/96 13:58:14 | KFA [1] | 08/15/96 13:58:14 | KDY [1] | 04/13/09 09:00:08 | KDY [1] | 04/13/09 09:00:08 | KDY [1] | 04/13/09 09:00:08 |
| KFW [1] | 03/20/99 12:34:00 | KFW [1] | 03/20/99 12:34:00 | KFA [1] | 08/15/96 13:58:14 | KFA [1] | 08/15/96 13:58:14 | KFA [1] | 08/15/96 13:58:14 |
| KIP [1] | 08/14/09 15:36:11 | KIP [1] | 08/14/09 15:36:11 | KFW [1] | 03/20/99 12:34:00 | KFW [1] | 03/20/99 12:34:00 | KFW [1] | 03/20/99 12:34:00 |
| KM5 [1] | 10/28/09 08:26:11 | KM5 [1] | 10/28/09 08:26:11 | KIP[2574] | Missing | KIP[2574] | Missing | KIP[2574] | Missing |
| KMC [1] | 08/15/08 23:28:50 | KMC [1] | 08/15/08 23:28:50 | KM5 [1] | 07/21/10 07:34:50 | KM5 [1] | 07/21/10 07:34:50 | KM5 [1] | 07/21/10 07:34:50 |
| KMQ [1] | 12/21/09 10:08:48 | KMQ [1] | 12/21/09 10:08:48 | KMC [1] | 11/16/09 03:46:35 | KMC [1] | 11/16/09 03:46:35 | KMC [1] | 11/16/09 03:46:35 |
| KMS [1] | 03/21/95 14:16:02 | KMS [1] | 03/21/95 14:16:02 | KMQ [1] | 11/16/09 03:46:32 | KMQ [1] | 11/16/09 03:46:32 | KMQ [1] | 11/16/09 03:46:32 |
| KQI [1] | 08/15/08 23:28:53 | KQI [1] | 08/15/08 23:28:53 | KMS [1] | 03/21/95 14:16:02 | KMS [1] | 03/21/95 14:16:02 | KMS [1] | 03/21/95 14:16:02 |
| KQM [1] | 08/15/96 13:58:14 | KQM [1] | 08/15/96 13:58:14 | KQI [1] | 06/01/10 16:31:55 | KQI [1] | 06/01/10 16:31:55 | KQI [1] | 06/01/10 16:31:55 |
| KSD [1] | 07/14/05 08:43:58 | KSD [1] | 07/14/05 08:43:58 | KQM [1] | 08/15/96 13:58:14 | KQM [1] | 08/15/96 13:58:14 | KQM [1] | 08/15/96 13:58:14 |
| MV [1] | 09/10/05 10:15:17 | MV [1] | 09/10/05 10:15:17 | KSD[9] | Missing | KSD[9] | Missing | KSD[9] | Missing |
| O4SRV [1] | 07/11/09 00:00:00 | O4SRV [1] | 07/11/09 00:00:00 | KSY [1] | 01/28/05 04:01:27 | KSY [1] | 01/28/05 04:01:27 | KSY [1] | 01/28/05 04:01:27 |
| OMCICS [1] | 12/26/08 15:07:24 | OMCICS [1] | 12/26/08 15:07:24 | MV[17] | Missing | MV[17] | Missing | MV[17] | Missing |
| OMSMS [1] | 10/10/07 14:39:00 | OMSMS [1] | 10/10/07 14:39:00 | O4SRV [1] | 01/08/10 00:00:00 | O4SRV [1] | 01/08/10 00:00:00 | O4SRV [1] | 01/08/10 00:00:00 |
| PDSSTATS [1] | 02/13/97 11:39:47 | PDSSTATS [1] | 02/13/97 11:39:47 | OMCICS [1] | 08/18/10 10:27:11 | OMCICS [1] | 08/18/10 10:27:11 | OMCICS [1] | 08/18/10 10:27:11 |
| SYSTEM [1] | 04/02/96 11:17:31 | SYSTEM [1] | 04/02/96 11:17:31 | OMSMS [1] | 10/10/07 14:39:00 | OMSMS [1] | 10/10/07 14:39:00 | OMSMS [1] | 10/10/07 14:39:00 |
| | | | | PDSSTATS [1] | 02/13/97 11:39:47 | PDSSTATS [1] | 02/13/97 11:39:47 | PDSSTATS [1] | 02/13/97 11:39:47 |
| | | | | SYSTEM [1] | 04/02/96 11:17:31 | SYSTEM [1] | 04/02/96 11:17:31 | SYSTEM [1] | 04/02/96 11:17:31 |

- Green – In Sync
- Yellow – Missing at Hub
- Red – Mismatched
- Blue – Missing at Remote

Environment Compatibility

- Change control is crucial
- ITMSuper and custom queries are good tools
 - Manual effort still required
- ITM 623 enhancements
- Custom code to compare environments
 - TACMD CLI, SOAP, Exported reports
 - Process the output

Export Utility

- TACMD
- Authorized user CLI to ITM/OMEGAMON objects
- Bulk Export / Import of Situations
- XML file shared across environments

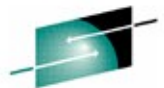
`tacmd bulkExportSit`

Description

Use the `tacmd bulkExportSit` command to export all the available situations from the Tivoli Enterprise Monitoring Server. You can filter for a specified system type, a list of specified system types, a specified situation name, or a listfile containing situation names. You must log in by using the `login` command before running the `bulkexportsit` command.

CLI syntax

```
tacmd bulkExportSit
    [-p|--path SITUATION_FILEPATH ]
    [-t|--type| --types TYPE]
    [-n|--names SITUATIONNAMES]
    [-d|--distribution]
    [-h|--historical]
    [-f|--force]
tacmd bulkExportSit
    [-p|--path SITUATION_FILEPATH ]
    [-l|--listfile] FILENAME
    [-d|--distribution]
    [-h|--historical]
    [-f|--force]
```

Exploit Managed System Lists

Situation Editor

Formula Distribution Expert Advice Action EIF Until

Assigned

- *MVS_CICS

Available Managed Systems

- IPO1.AR
- IPO1.CICS31
- IPO1.CICS32
- IPO1.CICS32AR
- IPO1.CICS32TR
- IPO1.TR

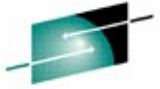
Available Managed System Groups

- CICS_v420
- CICS_v510
- cicsmq

Override Formula... Edit Managed System Groups

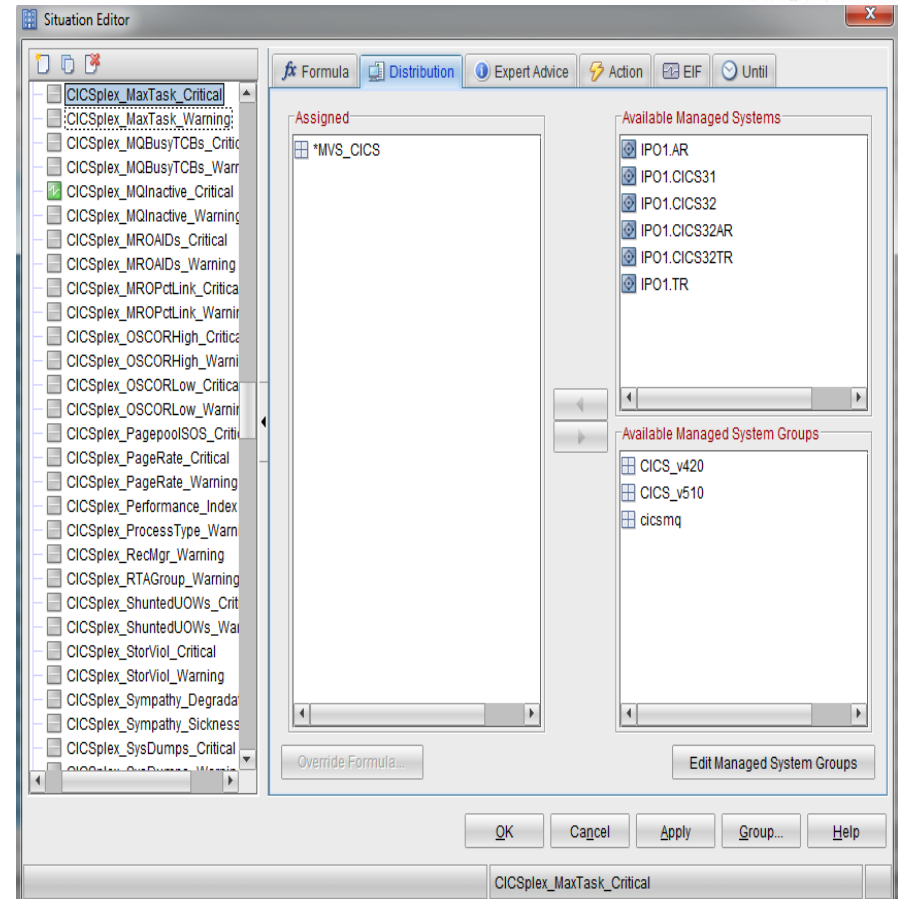
OK Cancel Apply Group... Help

CICSplex_MaxTask_Critical



Version Specific MSL's

- Construct MSL's by version
- Distribute situations to MSL
- Assures catalog match
- Utilities to facilitate the process
- Javascript to SOAP server



ITM_MSL_Updater.js /hserver:9.42.62.36 /hu:tech01 /hp:wayne1 /hsport:2020
/halias:soap /patnodl:"IP01.CICS32,CICS_v420;IP01.CICS42,CICSv510"

Summary

- OMEGAMON constructs can be leveraged across the enterprise
- Participating systems must be at compatible levels
- Utilities exist to assist with this process
- Situation LCD
- Procedures must be defined to ensure successful migration of situations across environments.