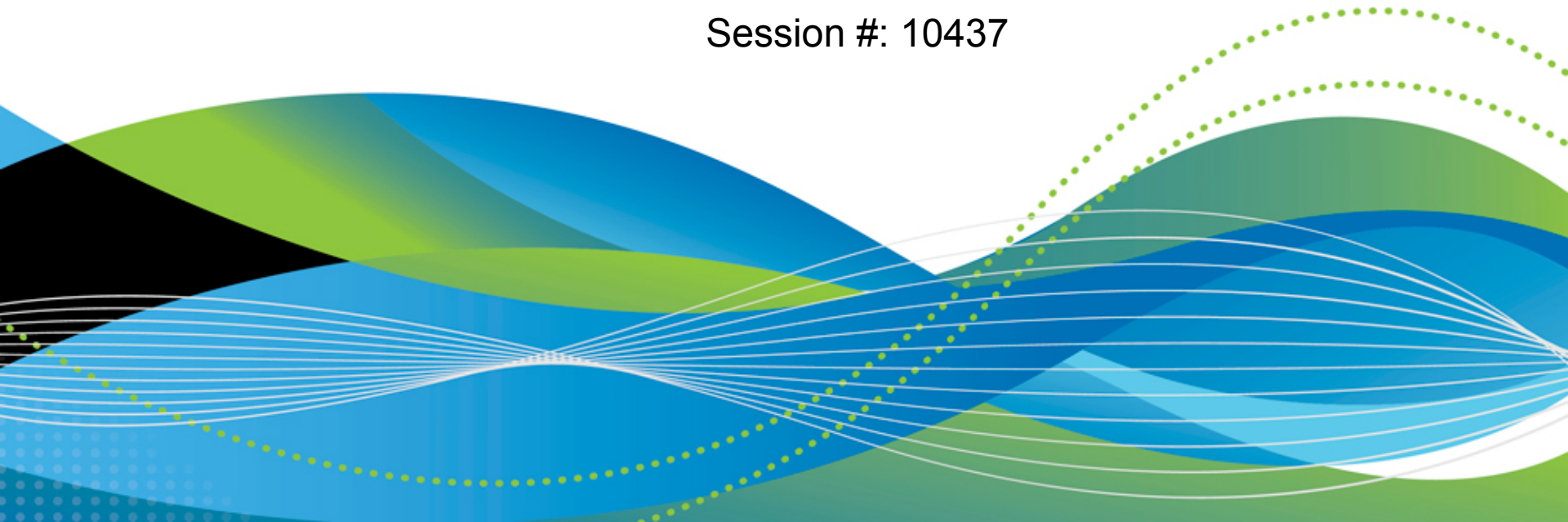


A System z Developer's Journey Through the Application Lifecycle

Rosalind Radcliffe / Dana Boudreau
IBM

13 March 2012
Session #: 10437



Disclaimer

© Copyright IBM Corporation 2011. All rights reserved. *IBM's statements regarding its plans, directions, and intent are subject to change or withdrawal without notice at IBM's sole discretion. Information regarding potential future products is intended to outline our general product direction and it should not be relied on in making a purchasing decision. The information mentioned regarding potential future products is not a commitment, promise, or legal obligation to deliver any material, code or functionality. Information about potential future products may not be incorporated into any contract. The development, release, and timing of any future features or functionality described for our products remains at our sole discretion.*

Scenario

JK Enterprises has a business need to provide to make a quick update to an existing application and work on a web front end

IT scenario is:

- Establish a requirement
- Break the requirement into working tasks, plan and assign them
- Execute on the tasks defined ensuring a level of quality before promoting it to the next stage
- Promote the changes to final test

Products to be demonstrated

Collaborative Lifecycle Management (CLM)

- **Rational Team Concert (RTC)**
- **Rational Requirements Composer (RRC)**
- Rational Quality Manager

Rational Developer for System z (RDz)

Rational Developer for System z Unit Test (RDz UT)

Rational Team Concert: Workbench for Collaborative Lifecycle Management

A robust, extensible solution for analysts, developers and quality professionals



Rational Developer for System z



► What is RDz

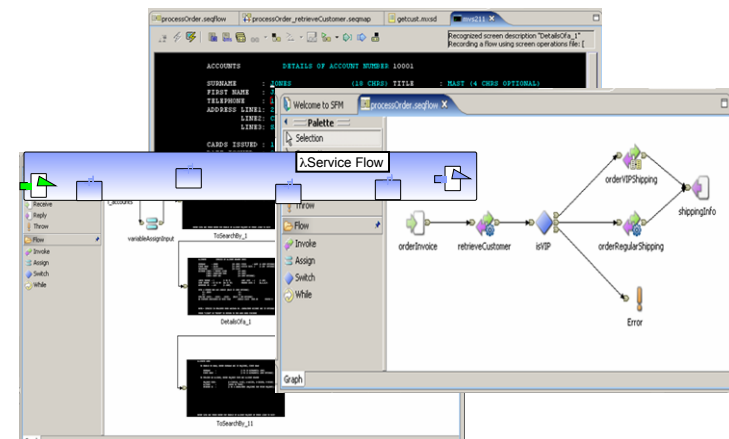
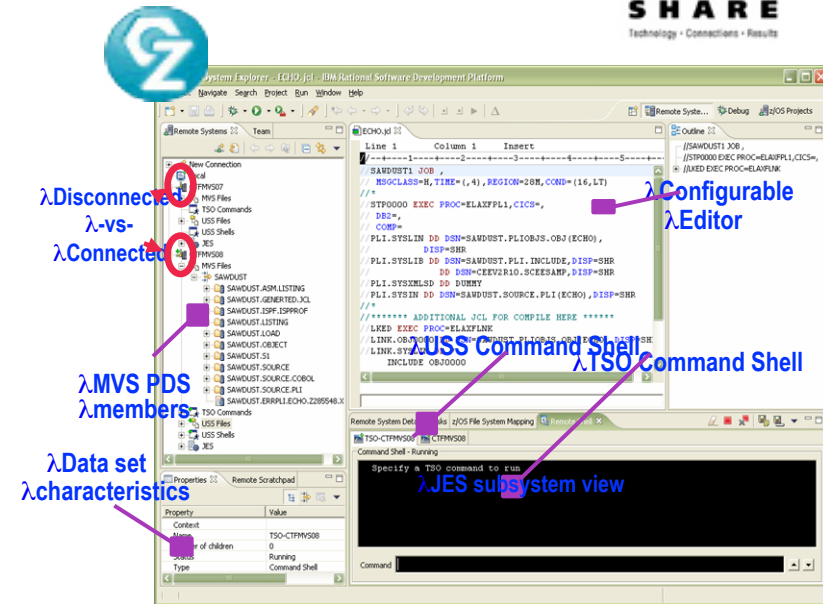
- Eclipse-based IDE speeding modern composite (SOA) application development

► RDz supports Enterprise Modernization

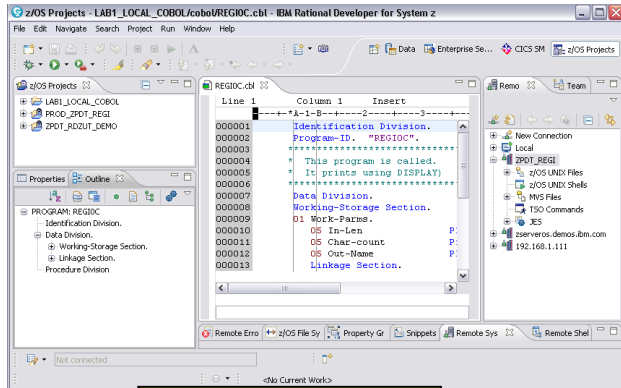
- Supports common IDE for COBOL, PL/I, C, C++ , HLASM, Java, EGL and web services
- Transforms UML to COBOL source code
- Provides interactive access to z/OS for development, debug, job generation, submission, monitoring, command execution
- Supports new and existing runtimes (CICS, IMS, Batch, USS, DB2 SP, WAS)

► RDz supports SOA

- Enables CICS and IMS applications for web services and SOA
- Supports for J2EE, JCA, XML, web services

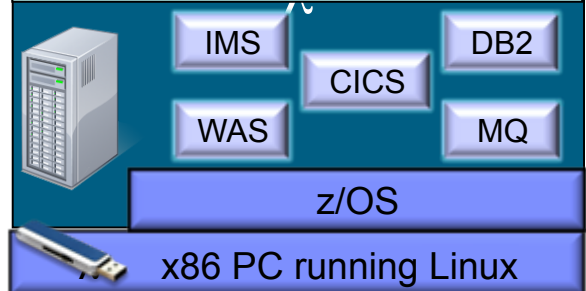


Using RDz Unit Test Feature



RDz Client

COBOL, PL/I, C++, Java, EGL, Batch,
Assembler, Debug Tool



**RDz
Unit Test
(RDz UT)**

BUS 11 2010

RDz UT machine specifications

- Underlying Linux requirement

- Red Hat Enterprise Linux 5.3 (RHEL 5.3) – 64-bit
- OpenSUSE 10.3, 11.0, and 11.1 – 64-bit

- Base machine must have:

- ▶ Processor
 - RDz-UT Standard - Minimum practical configuration is 2.4 Ghz Core 2 Duo
 - RDz-UT Specialty - Minimum practical configuration is 2.0 Ghz i5 / i7 4 core
- ▶ RAM
 - 3 GB minimum
 - Recommended is 1 GB for base Linux + 2 GB per processor core enabled for RDz-UT
- ▶ Disk space
 - 20 GB for base Linux / zPDT install
 - 50-120 GB for z/OS install
- ▶ Network
 - 100MB / 1GB Ethernet adapter (shared by Linux and z/OS)
 - Wireless (OK for Linux, not recommended for z/OS)
- ▶ USB
 - Required for 1091 hardware key



ADCD 1.11s Software Products Licensed for Use with RDZ-UT V.8.0.1

- z/OS Version 1 Release 11
- IBM Ported Tools for z/OS 1.14
- IBM Print Services Facility for z/OS V4.2
- IBM REXX/370 Compiler & IBM Library for REXX/370
- IBM AFP(TM) Font Collection for VSE
- IBM Enterprise COBOL for z/OS V4.2
- IBM XML Toolkit for z/OS V1.10
- IBM 31-bit SDK for z/OS, Java 2 Technology Edition V5.0
- IBM 64-bit SDK for z/OS, Java 2 Technology Edition V5.0
- IBM 31-bit SDK for z/OS, Java Technology Edition, V6
- IBM 64-bit SDK for z/OS, Java Technology Edition, V6
- IBM Debug Tool for z/OS V9.1
- IBM Enterprise PL/I for z/OS V3.8
- IBM Tivoli NetView for z/OS V5.3
- IBM z/OS Management Facility V1.10
- IBM Rational Developer for System z V7.5 (Remote System Explorer Component)
- IBM DB2 for z/OS V9.1
- IBM DB2 Administration Tool for z/OS V7.2
- IBM DB2 Object Comparison Tool for z/OS V7.2
- IBM DB2 Accessories Suite for z/OS V1.1
- IBM CICS Transaction Server for z/OS V4.1
- IBM Information Management System (IMS) Version 11.1.0
- IBM IMS Queue Control Facility for z/OS V2.1
- IBM IMS High Performance Change Accumulation Utility for z/OS V1.4
- IBM IMS High Performance Image Copy for z/OS V4.1.0
- IBM IMS(TM) Database Control Suite for z/OS V3.2
- IBM IMS Library Integrity Utilities for z/OS V2.1
- IBM WebSphere Application Server for z/OS V7.0
- IBM Tivoli Workload Scheduler for z/OS V8.5.0
- IBM WebSphere MQ for z/OS V7.0.0

* Custom software stacks may be available at additional cost



www.ibm/software/rational