

#SHAREorg

SHARE  
Sharing Information. Making It Better.

# CICS Explorer Update What's New in 1.1?

Anthony Papageorgiou  
IBM

March 15, 2012  
Session: 10293

© 2011 IBM Corporation

SHARE  
Sharing Information. Making It Better.

## Explorer History – Version Identifier Convention

What do the numbers mean in the Version identifier

Downward compatible with supported releases of CICS

4

SHARE  
Sharing Information. Making It Better.

## Agenda – What's New in CICS Explorer 1.1

- Overview / History
- Install Information
- General
- z/OS
- Events
- Atom
- SM Administration
- Java
- Summary / Questions

SHARE in Atlanta  
© 2011 IBM Corporation

2

SHARE  
Sharing Information. Making It Better.

## Explorer History

- ☀ V1.1.0.1 – September 2011
  - V1.1.0.0 - June 2011
  - V1.0.1 - September 2010
  - V1.0.0.7 - June 2010
  - V1.0.0.6 - April 2010
  - V1.0.0.5 - February 2010
  - V1.0.0.4 - December 2009
  - V1.0.0.3 - December 2009
  - V1.0.0.2 - September 2009
  - CS1J: CICS Explorer for Windows – November 2008

SHARE in Atlanta  
© 2011 IBM Corporation

5

SHARE  
Sharing Information. Making It Better.

## Explorer Overview

- CICS Explorer 1.1.0.1 is the current release available
  - Provides support for CICS TS v4.2
  - Adds new Features and Functionality
    - Workbench and View changes and improvements
    - New CICSplex SM Administration perspective and nine associated views
    - Enhances the Atom creation process
    - Improved Event Binding editors along with new event search and copy features
    - Adds column sorting
    - New transaction tracking view

SHARE in Atlanta  
© 2011 IBM Corporation

3

SHARE  
Sharing Information. Making It Better.

## Install Information

- You Must Download and Install a fresh new copy
  - Can Reuse your old Workspace
    - Some Errors may occur for unsupported perspectives
      - Simply right click and reset the perspectives
      - Must install the supported plug-ins
    - No Errors if you Export / Import your Preferences
  - Must re-install all Plug-Ins using the latest compatible version
  - V1.1.0.0 is required for CICS TS v4.2
  - Downward compatible with older supported CICS releases

SHARE in Atlanta  
© 2011 IBM Corporation

6

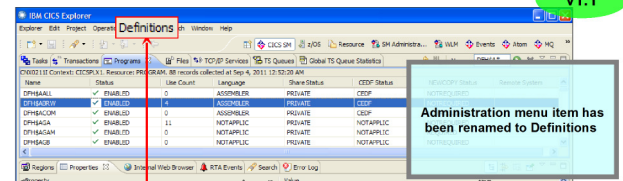
## CICS Explorer V1.1 Plug-ins

- CICS Configuration Manager Version 2.1
- CICS Deployment Assistant Version 1.1
- CICS Interdependency Analyzer Version 3.1
- CICS Performance Analyzer Version 3.1
- CICS Performance Analyzer Version 3.2
- IBM Session Manager (z/OS) Version 3
- CICS Transaction Gateway (Multiplatform) Version ( 7.1 or 7.2 or 8 )
- CICS Transaction Gateway (z/OS) Version ( 7.1 or 7.2 or 8 )



7

## Changes to the CICS Explorer menu bar

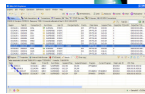


v1.0.1

10

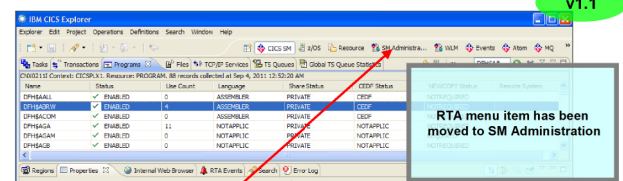
## General

- Support for column sorting in views
- Changes to the CICS Explorer menu bar
- Improved support for transaction tracking
- Task View Changes
- New Global TSQ View
- MB GB improvements



8

## Changes to the CICS Explorer menu bar



v1.0.1

11

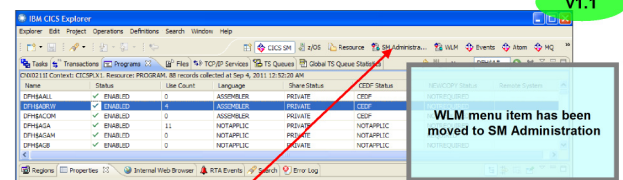
## Changes to the CICS Explorer menu bar

- The Administration menu item has been renamed to Definitions
- The RTA menu item has been removed. The RTA Events view is now accessible from the Operations menu in the SM Administration perspective.
- The WLM menu item has been removed. The WLM views are now accessible from the Operations menu in the SM Administration perspective.



9

## Changes to the CICS Explorer menu bar



v1.0.1

12

## Changes to the CICS Explorer menu bar

**v1.1**

Events View has been renamed to RTA Events

**v1.0.1**

## Task View Changes

**v1.0.1**

Improved Column Names

**v1.1**

## Task View Changes

- More meaningful Task View field names

**v1.0.1**

Old Column and Attribute field names

**v1.1**

## Task View Changes

- More meaningful Task View field names

**v1.1**

Improved Column Names

Improved Properties Field Names

## Task View Changes

- More meaningful Task View field names

**v1.1**

Clicking on the down caret and select Customize Columns

## Task View Changes

- Much easier to select fields and review properties

**v1.1**

Improved Customized Attribute Names

## Task View Changes

- More easier to select fields and review properties

20

Improved Customized Attribute Names

## Task View Changes

- The Help under Task View provides a Cross Reference

Field name	Description	Attribute name
Dispatcher TCB HWM	The peak number of CICS dispatcher TCBs in use.	TMRDSTHW
Dispatcher TCB Mismatch Wait Time	This is a composite field displaying one of the following elements: <ul style="list-style-type: none"> <li>The total amount of TCB mismatch wait time, that is, TCB requests that waited because there was no TCB available matching the request, but there was at least one non-matching free TCB.</li> <li>The number of TCB requests that waited because there was no TCB available matching the request, but there was at least one non-matching free TCB.</li> </ul>	TMRDSMWT

23

## Task View Changes

- More meaningful Task View field names

21

## New Global TSQ View

- New Operation view has been added
  - Global TSQ Statistics view
  - The TS Queue Statistics (TSQGBL) view displays information about temporary storage queue usage

Region	Namespace	Current	Transient	Peak	Avail	Transient	Current	Buffers	Storage
CICSAR1	0	0	0.000	3551	0	0	2159	0	0
CICSAR2	0	0	0.000	0	0	0	2159	0	0
CICSAR3	0	0	0.000	0	0	0	2159	0	0
CICSAR4	0	0	0.000	0	0	0	2159	0	0
CICSAR5	0	0	0.000	0	0	0	2159	0	0
CICSAR6	0	0	0.000	0	0	0	2159	0	0
CICSAR7	0	0	0.000	0	0	0	2159	0	0
CICSAR8	0	0	0.000	0	0	0	2159	0	0
CICSDH	0	0	0.000	0	0	0	2159	3	0
CICSVUE	1	8	8	0.000	8	0	0	0	0

24

## Task View Changes

- The Help under Task View provides a Cross Reference

Field name	Description	Attribute name
ALLOCATE Request Count	The number of ALLOCATE requests issued by this task.	ALLOCATES
Activity ID	The CICS Business Transaction Services activity ID for this task represents.	ACTIVITYD
Activity Name	The CICS Business Transaction Services Activity Name that this task represents.	ACTVTNMI
Associated IP Facilities Count	The number of IP facilities currently associated with this task.	SPFACCT
Alias Service Name	Alias Service name.	TMRDMSN
Attach Time	The date and time at which the task was attached. This is expressed as local time.	ATTACHTIME
Average Storage ECDSA	The average storage occupancy in the ECDSA. This measures the area under the curve of storage in use against elapsed time.	ECDASAOCC
Avg CDSA Storage	The average storage occupancy in the CDSA. This measures the area under the curve of storage in use against elapsed time.	CDSASOCC
Avg Storage Usage Above 16MB	The average storage occupancy of the user task above the 16MB line. This measures the area under the curve of storage in use against elapsed time.	USTG16OCC
Avg Storage Usage Below 16MB	The average storage occupancy of the user task below the 16MB line. This measures the area under the curve of storage in use against elapsed time.	USTG24OCC

22

## New Global TSQ View – Viewing a CICSPlex

Region	Namespace	Current	Transient	Peak	Avail	Transient	Current	Buffers	Storage
CICSAR1	0	0	0.000	3551	0	0	2159	0	0
CICSAR2	0	0	0.000	0	0	0	2159	0	0
CICSAR3	0	0	0.000	0	0	0	2159	0	0
CICSAR4	0	0	0.000	0	0	0	2159	0	0
CICSAR5	0	0	0.000	0	0	0	2159	0	0
CICSAR6	0	0	0.000	0	0	0	2159	0	0
CICSAR7	0	0	0.000	0	0	0	2159	0	0
CICSAR8	0	0	0.000	0	0	0	2159	0	0
CICSDH	0	0	0.000	0	0	0	2159	3	0
CICSVUE	1	8	8	0.000	8	0	0	0	0

2





## Transaction Tracking

**Right Click and Search Associated Tasks**

IBM CICS Explorer interface showing a search for tasks associated with a specific transaction ID. The search results are displayed in a table below the main task list.

Region	Task ID	Start Time	Origin Transaction ID	Origin Ap...	Origin Us...	Origin Task	Origin Fac...	Origin IP...
CICSAR1	000029	2011-09-07 18:36:28	286612+00:00	CONL	CICSACB1	SYSTC	000029	NONE
CICSAR1	000048	2011-09-07 18:36:30	186614+00:00	COAM	CICSACB1	SYSTC	000048	START
CICSAR1	000050	2011-09-07 18:36:30	186614+00:00	CSL	CICSACB1	SYSTC	000050	START
CICSAR1	000056	2011-09-07 18:36:30	2208+00:00	COAL	CICSACB1	SYSTC	000056	NONE
CICSAR1	000060	2011-09-07 18:36:33	070592+00:00	COIE	CICSACB1	SYSTC	000060	NONE
CICSAR1	000062	2011-09-07 18:36:34	405368+00:00	OMEG	CICSACB1	SYSTC	000062	START
CICSAR1	000063	2011-09-07 18:36:34	405621+00:00	OMEG	CICSACB1	SYSTC	000063	START
CICSAR1	000074	2011-09-04 09:41		OMEG	CICSACB1	SYSTC	000074	START
CICSAR2	000044	2011-09-04 09:41		COAM	CICSACB2	SYSTC	000044	START
CICSAR2	000048	2011-09-04 09:41		COAM	CICSACB2	SYSTC	000048	START
CICSAR2	000052	2011-09-04 09:41	44-0061	COAM	CICSACB2	SYSTC	000052	NONE

39

## Transaction Tracking

**Results show up in the Search View**

- 1) Tran ABRW Started in CICSAR1
- 2) Dynamic Transaction Routed to CICSAR6
- 3) Static Transaction Routed to CICSAR4
- 4) Function Shipped to CICSAR7

IBM CICS Explorer interface showing search results for tasks associated with a transaction ID. The results are displayed in a table below the main task list.

Region	Task ID	Run Status	User ID	Principal Facility	Priority	Class Name	Suspend Time	Dispatcher TCB HW	Dispatcher TCB SW
CICSAR1	000029	CONL			255	DPHTCLO	0:00:00	0	0000:00:00:000...
CICSAR1	000048	COAM			255	DPHTCLO	2:29:53	0	0000:00:00:000...
CICSAR1	000050	CSL			255	DPHTCLO	0:00:24	0	0000:00:00:000...
CICSAR1	000056	COIE			255	DPHTCLO	0:00:00	0	0000:00:00:000...
CICSAR1	000060	COIE			255	DPHTCLO	0:00:06	0	0000:00:00:000...
CICSAR1	000062	OMEG			255	DPHTCLO	0:05:54	0	0000:00:00:000...
CICSAR1	000063	OMEG			255	DPHTCLO	0:05:54	0	0000:00:00:000...
CICSAR1	000074	OMEG			255	DPHTCLO	0:00:05	0	0000:00:00:000...
CICSAR2	000044	COAM			255	DPHTCLO	0:00:00	0	0000:00:00:000...
CICSAR2	000048	COAM			255	DPHTCLO	4:56:41	1	0000:00:00:000...

42

## Transaction Tracking

**A Search Analysis is run**

IBM CICS Explorer interface showing a search analysis for tasks associated with a transaction ID. The search analysis window is open, displaying the search criteria and results.

Tasks associated with task "0000134" in region "CICSAR1":

Task ID	Run Status	User ID	Principal Facility	Priority	Class Name	Suspend Time	Dispatcher TCB HW	Dispatcher TCB SW
07	NONE			0		0:00:00	0	0000:00:00:000...
H4	START			0		0:00:00	0	0000:00:00:000...
H5	START			0		0:00:00	0	0000:00:00:000...
K2	START			0		0:00:00	0	0000:00:00:000...
K3	START			0		0:00:00	0	0000:00:00:000...
L5	SUSPENDED	DD03363	0050	1	DPHTCLO	0:30:53	0	0000:00:00:000...

40

## Transaction Tracking

**Can PURGE the Offending Task from the Search View**

IBM CICS Explorer interface showing search results for tasks associated with a transaction ID. The search results are displayed in a table below the main task list. A 'Purge' button is highlighted in the search results table.

Region	Task ID	Run Status	User ID	Principal Facility	Priority	Class Name	Suspend Time	Dispatcher TCB HW	Dispatcher TCB SW
CICSAR1	000029	CONL			255	DPHTCLO	0:00:00	0	0000:00:00:000...
CICSAR1	000048	COAM			255	DPHTCLO	2:29:53	0	0000:00:00:000...
CICSAR1	000050	CSL			255	DPHTCLO	0:00:24	0	0000:00:00:000...
CICSAR1	000056	COIE			255	DPHTCLO	0:00:00	0	0000:00:00:000...
CICSAR1	000060	COIE			255	DPHTCLO	0:00:06	0	0000:00:00:000...
CICSAR1	000062	OMEG			255	DPHTCLO	0:05:54	0	0000:00:00:000...
CICSAR1	000063	OMEG			255	DPHTCLO	0:05:54	0	0000:00:00:000...
CICSAR1	000074	OMEG			255	DPHTCLO	0:00:05	0	0000:00:00:000...
CICSAR2	000044	COAM			255	DPHTCLO	0:00:00	0	0000:00:00:000...
CICSAR2	000048	COAM			255	DPHTCLO	4:56:41	1	0000:00:00:000...

43

## Transaction Tracking

**Results show up in the Search View**

IBM CICS Explorer interface showing search results for tasks associated with a transaction ID. The search results are displayed in a table below the main task list.

Region	Task ID	Run Status	User ID	Principal Facility	Priority	Class Name	Suspend Time	Dispatcher TCB HW	Dispatcher TCB SW
CICSAR1	000029	CONL			255	DPHTCLO	0:00:00	0	0000:00:00:000...
CICSAR1	000048	COAM			255	DPHTCLO	2:29:53	0	0000:00:00:000...
CICSAR1	000050	CSL			255	DPHTCLO	0:00:24	0	0000:00:00:000...
CICSAR1	000056	COIE			255	DPHTCLO	0:00:00	0	0000:00:00:000...
CICSAR1	000060	COIE			255	DPHTCLO	0:00:06	0	0000:00:00:000...
CICSAR1	000062	OMEG			255	DPHTCLO	0:05:54	0	0000:00:00:000...
CICSAR1	000063	OMEG			255	DPHTCLO	0:05:54	0	0000:00:00:000...
CICSAR1	000074	OMEG			255	DPHTCLO	0:00:05	0	0000:00:00:000...
CICSAR2	000044	COAM			255	DPHTCLO	0:00:00	0	0000:00:00:000...
CICSAR2	000048	COAM			255	DPHTCLO	4:56:41	1	0000:00:00:000...

41

## Transaction Tracking – Originating from TCP/IP Service

**Results show up in the Search View**

IBM CICS Explorer interface showing TCP/IP Services. The 'TCP/IP Services' tab is selected, displaying a table of services.

Region	Name	Port	Service Status	Num Of Connect...	Backlog	IP Address	TS Queue Prefix	Secret Code Acc...
CICACB11	ADHRES72	8092	OPEN	0	1	9.39.68.147		
CICACB11	ADHRES72	8092	OPEN	0	1	9.39.68.147		WAIT
CICACB11	ADHRES72	8092	OPEN	0	1	9.39.68.147		ENTER
CICACB11	TP000002	3092	OPEN	0	1	9.39.68.147		TIMEOUT

44

## Transaction Tracking – Originating from TCP/IP Service

**Right Click and Search Tasks from TCP/IP Service**

Region	Name	Port	Service Status	Num Of Connec...	Backlog	IP Address	TS Queue Prefix	Socket Close Ac...
CICACB11	ADHRESB2	8092	OPEN	0	1	9.39.68.147		WAIT
CICACB11	ADHRESB2	8092	OPEN	0	1	9.39.68.147		WAIT
CICACB11	DFHFWUC1	3092	OPEN	1	1	9.39.68.147		TIMEOUT
CICACB11	TP00002	3092	OPEN	1	1	9.39.68.147		TIMEOUT

45

## Transaction Tracking

**Multiple Saved or Pinned searches**

Region	Task ID	Transaction ID	Run Status	User ID	Principal Facility	Priority	Class Name	Suspend Time	Dispatcher TCB HWM	Dispatcher TCB Max	Dispatcher TCB Min
CICSAOR1	0000029	COAL	RUNNING	SYSTC		255	DFHTCLO	0:00:00	0	0:00:00:00.000000	0
CICSAOR1	0000048	COAM	SUSPENDED	SYSTC		255	DFHTCLO	7:44:42	0	0:00:00:00.000000	0
CICSAOR1	0000050	COAL	SUSPENDED	SYSTC		255	DFHTCLO	0:00:12	0	0:00:00:00.000000	0
CICSAOR1	0000056	COIO	SUSPENDED	SYSTC		255	DFHTCLO	0:00:00	0	0:00:00:00.000000	0
CICSAOR1	0000060	COIE	SUSPENDED	SYSTC		255	DFHTCLO	0:00:14	0	0:00:00:00.000000	0
CICSAOR1	0000062	OMEG	SUSPENDED	SYSTC		255	DFHTCLO	0:05:42	0	0:00:00:00.000000	0
CICSAOR1	0000063	OMEG	SUSPENDED	SYSTC		255	DFHTCLO	0:05:42	0	0:00:00:00.000000	0
CICSAOR2	0000027	COAL	RUNNING	SYSTC		255	DFHTCLO	0:00:00	0	0:00:00:00.000000	0
CICSAOR2	0000044	COAM	SUSPENDED	SYSTC		255	DFHTCLO	0:11:30	0	0:00:00:00.000000	0
CICSAOR2	0000045	COIT	SUSPENDED	SYSTC		1	DFHTCLO	0:11:30	1	0:00:00:00.000000	0

48

## Transaction Tracking – Originating from TCP/IP Service

**Results show up in the Search View**

Region	Name	Port	Service Status	Num Of Connec...	Backlog	IP Address	TS Queue Prefix	Socket Close Ac...
CICACB11	ADHRESB2	8092	OPEN	0	1	9.39.68.147		WAIT
CICACB11	ADHRESB2	8092	OPEN	0	1	9.39.68.147		WAIT
CICACB11	DFHFWUC1	3092	OPEN	1	1	9.39.68.147		TIMEOUT
CICACB11	TP00002	3092	OPEN	1	1	9.39.68.147		TIMEOUT

46

## Transaction Tracking

**Use Show Previous Searches Button to view History**

Region	Task ID	Transaction ID	Run Status	User ID	Principal Facility	Priority	Class Name	Suspend Time	Dispatcher TCB HWM	Dispatcher TCB Max	Dispatcher TCB Min
CICSAOR1	0000029	COAL	RUNNING	SYSTC		255	DFHTCLO	0:00:00	0	0:00:00:00.000000	0
CICSAOR1	0000048	COAM	SUSPENDED	SYSTC		255	DFHTCLO	7:44:42	0	0:00:00:00.000000	0
CICSAOR1	0000050	COAL	SUSPENDED	SYSTC		255	DFHTCLO	0:00:12	0	0:00:00:00.000000	0
CICSAOR1	0000056	COIO	SUSPENDED	SYSTC		255	DFHTCLO	0:00:00	0	0:00:00:00.000000	0
CICSAOR1	0000060	COIE	SUSPENDED	SYSTC		255	DFHTCLO	0:00:14	0	0:00:00:00.000000	0
CICSAOR1	0000062	OMEG	SUSPENDED	SYSTC		255	DFHTCLO	0:05:42	0	0:00:00:00.000000	0
CICSAOR1	0000063	OMEG	SUSPENDED	SYSTC		255	DFHTCLO	0:05:42	0	0:00:00:00.000000	0
CICSAOR2	0000027	COAL	RUNNING	SYSTC		255	DFHTCLO	0:00:00	0	0:00:00:00.000000	0
CICSAOR2	0000044	COAM	SUSPENDED	SYSTC		255	DFHTCLO	0:11:30	0	0:00:00:00.000000	0
CICSAOR2	0000045	COIT	SUSPENDED	SYSTC		1	DFHTCLO	0:11:30	1	0:00:00:00.000000	0

49

## Transaction Tracking

**Using the PIN button to save searches**

Region	Task ID	Transaction ID	Run Status	User ID	Principal Facility	Priority	Class Name	Suspend Time	Dispatcher TCB HWM	Dispatcher TCB Max	Dispatcher TCB Min
CICSAOR1	0000029	COAL	RUNNING	SYSTC		255	DFHTCLO	0:00:00	0	0:00:00:00.000000	0
CICSAOR1	0000048	COAM	SUSPENDED	SYSTC		255	DFHTCLO	2:29:53	0	0:00:00:00.000000	0
CICSAOR1	0000050	COAL	SUSPENDED	SYSTC		255	DFHTCLO	0:00:24	0	0:00:00:00.000000	0
CICSAOR1	0000056	COIO	SUSPENDED	SYSTC		255	DFHTCLO	0:00:00	0	0:00:00:00.000000	0
CICSAOR1	0000060	COIE	SUSPENDED	SYSTC		255	DFHTCLO	0:00:00	0	0:00:00:00.000000	0
CICSAOR1	0000062	OMEG	SUSPENDED	SYSTC		255	DFHTCLO	0:05:54	0	0:00:00:00.000000	0
CICSAOR1	0000063	OMEG	SUSPENDED	SYSTC		255	DFHTCLO	0:05:54	0	0:00:00:00.000000	0
CICSAOR1	0000134	ASBW	SUSPENDED	DD05363	0050	1	DFHTCLO	0:00:00	0	0:00:00:00.000000	0
CICSAOR2	0000027	COAL	RUNNING	SYSTC		255	DFHTCLO	0:00:00	0	0:00:00:00.000000	0
CICSAOR2	0000044	COAM	SUSPENDED	SYSTC		255	DFHTCLO	4:56:41	0	0:00:00:00.000000	0
CICSAOR2	0000045	COIT	SUSPENDED	SYSTC		1	DFHTCLO	4:56:41	1	0:00:00:00.000000	0

47

## Transaction Tracking

**Use Show Previous Searches Button to view History**

Region	Task ID	Transaction ID	Run Status	User ID	Principal Facility	Priority	Class Name	Suspend Time	Dispatcher TCB HWM	Dispatcher TCB Max	Dispatcher TCB Min
CICSAOR1	0000029	COAL	RUNNING	SYSTC		255	DFHTCLO	0:00:00	0	0:00:00:00.000000	0
CICSAOR1	0000048	COAM	SUSPENDED	SYSTC		255	DFHTCLO	7:44:42	0	0:00:00:00.000000	0
CICSAOR1	0000050	COAL	SUSPENDED	SYSTC		255	DFHTCLO	0:00:12	0	0:00:00:00.000000	0
CICSAOR1	0000056	COIO	SUSPENDED	SYSTC		255	DFHTCLO	0:00:00	0	0:00:00:00.000000	0
CICSAOR1	0000060	COIE	SUSPENDED	SYSTC		255	DFHTCLO	0:00:14	0	0:00:00:00.000000	0
CICSAOR1	0000062	OMEG	SUSPENDED	SYSTC		255	DFHTCLO	0:05:42	0	0:00:00:00.000000	0
CICSAOR1	0000063	OMEG	SUSPENDED	SYSTC		255	DFHTCLO	0:05:42	0	0:00:00:00.000000	0
CICSAOR2	0000027	COAL	RUNNING	SYSTC		255	DFHTCLO	0:00:00	0	0:00:00:00.000000	0
CICSAOR2	0000044	COAM	SUSPENDED	SYSTC		255	DFHTCLO	0:11:30	0	0:00:00:00.000000	0
CICSAOR2	0000045	COIT	SUSPENDED	SYSTC		1	DFHTCLO	0:11:30	1	0:00:00:00.000000	0

50





## z/OS Perspective – z/OS Data Sets View ...



z/OS Unix View Show High Level Qualifier

Data Set View Edit and Manage your z/OS data sets and submit jobs

## z/OS Perspective – z/OS Unix Files View



z/OS Unix View Support for Symbolic Links

## z/OS Perspective – z/OS Unix Files View



z/OS Unix View View and Browse your z/OS Unix System Services Files

## z/OS Perspective – z/OS Unix Files View



z/OS Unix View Show hidden files

## z/OS Perspective – z/OS Unix Files View



z/OS Unix View Modify Unix File and Directory Permissions

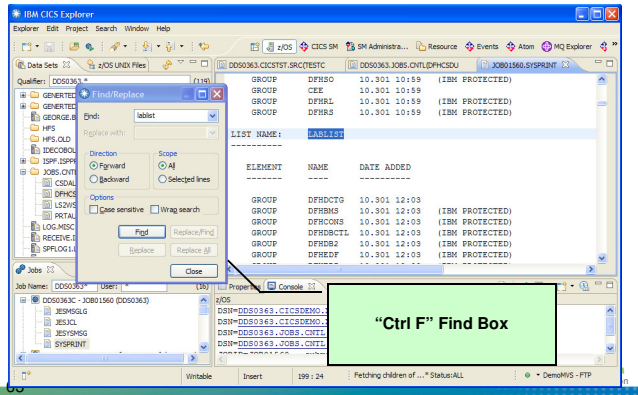
## z/OS Perspective – Jobs View



Jobs View View, Filter and Browse Job

Icon	Job type
	The Job icon. The icon is followed by the Job name and the Job ID.
	The icon for a job that has not run successfully.
	The icon for a job that is running.

## z/OS Perspective – Jobs View



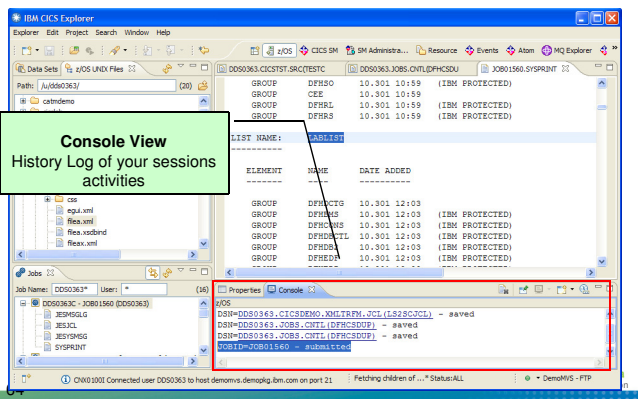
## System Events



- An emitted Business event that is related to the CICS system Health
  - Resource health events
    - The status of a DB2 connection changes
    - The status of a file changes
    - The status of a TRANCLASS
      - How close is the current value to the maximum
        - > Possible threshold values are 50%, 60%, 70%, 80%, 90%, & 100%
    - The MXT status
      - How close is the current value to the maximum
        - > Possible threshold values are 50%, 60%, 70%, 80%, 90%, & 100%
  - Transaction abend events
    - An application transaction abends



## z/OS Perspective – Console View



## System Events & EP Adapter Example



- **Build a System Event to monitor the status of VSAM File FILEA**
  - Use a predefined adapter called FileaMonAlerts
- **Build an External EP Adapter that can be used by other Events**
  - Include it in with our System Event we just built - FileaMon



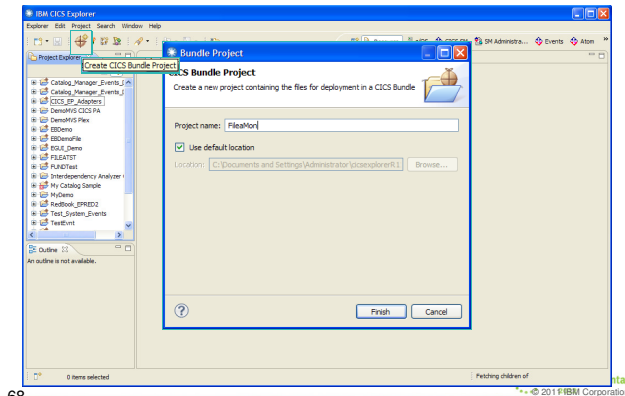
## Events

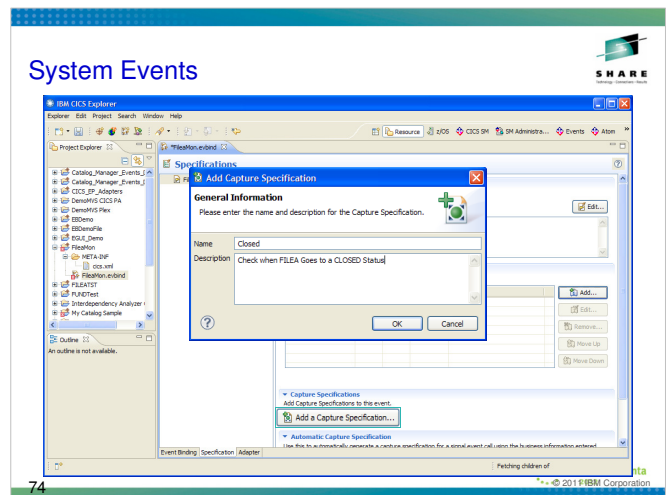
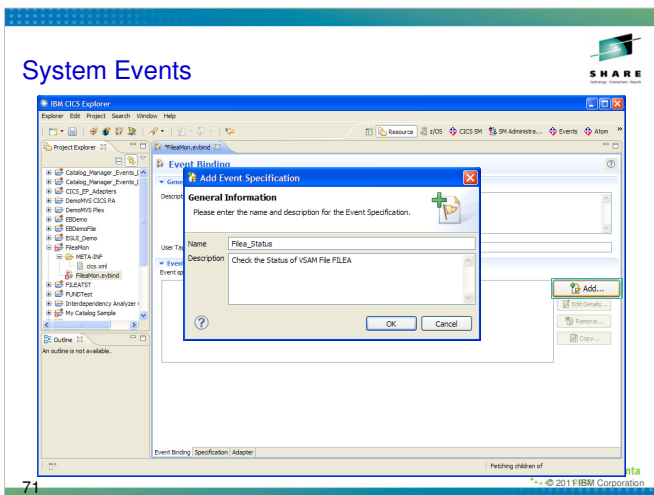
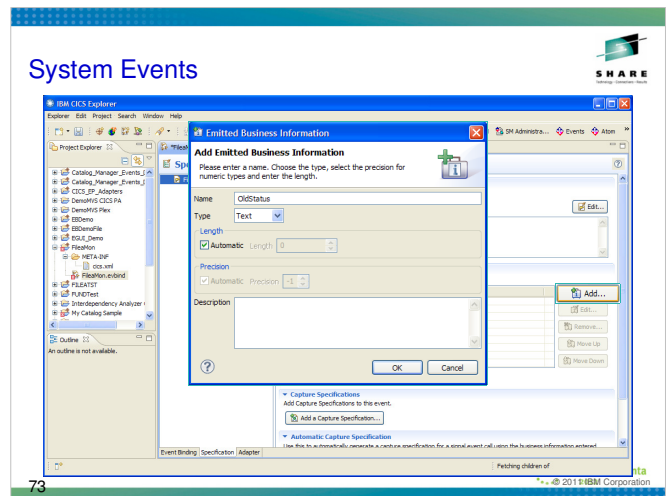
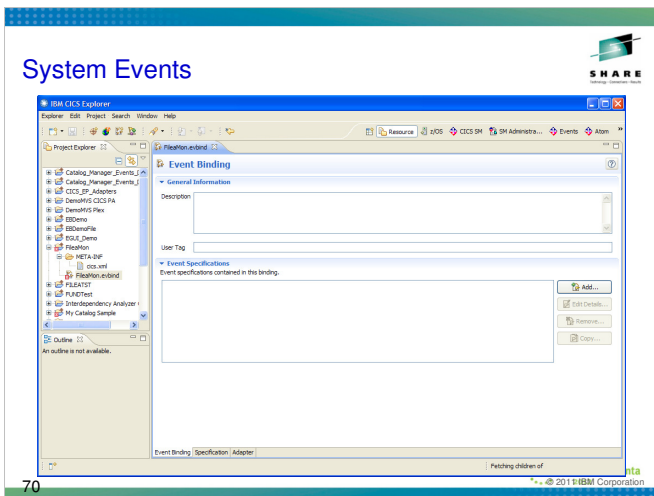
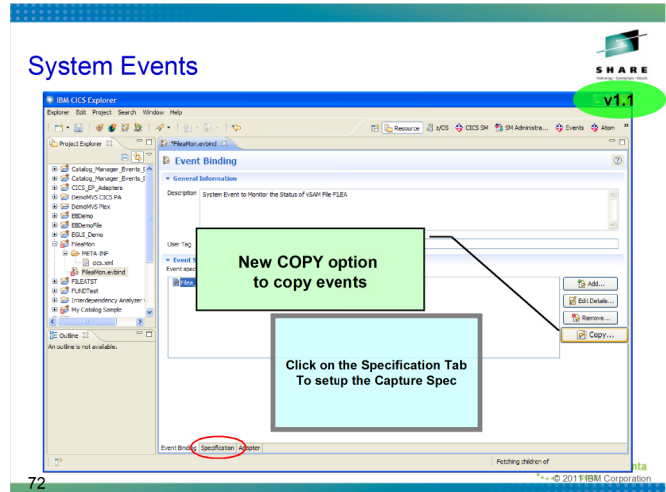
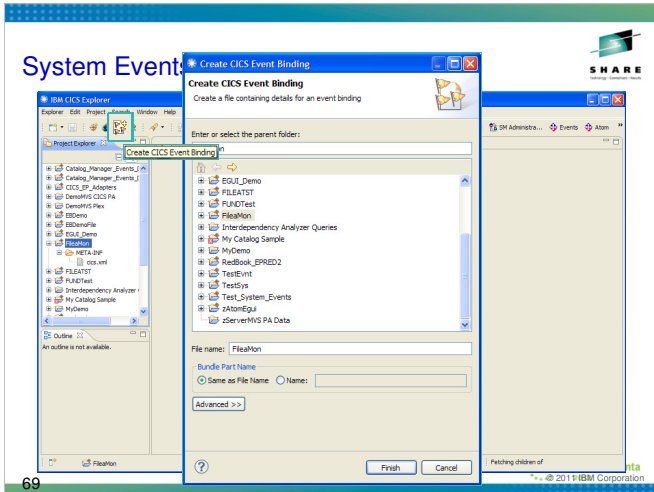


- Support for system events in the CICS event binding editor
- Ability to choose an EPADAPTER configuration
- Addition of an online and offline EP search function
- New edit functions added to the event binding editor
- Changes to the CICS Event binding editor
  - Choose an emission mode, Async or Sync



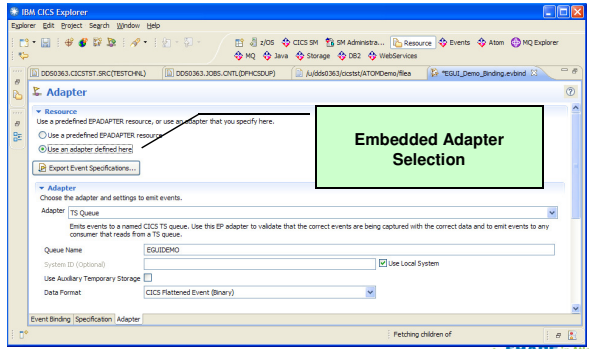
## System Events







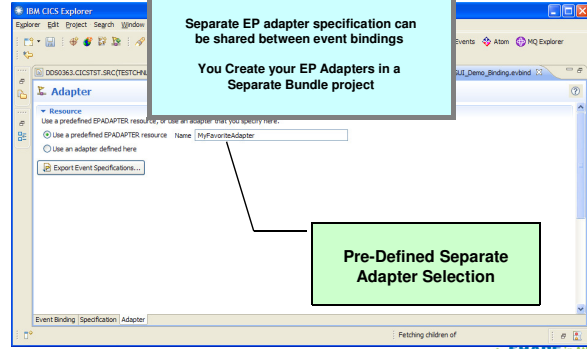
## EP Adapter – Inline Specification



81



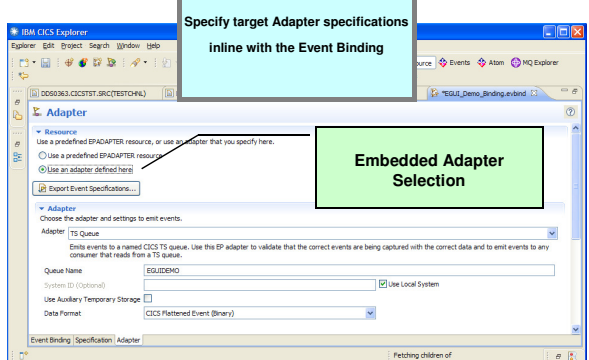
## EP Adapter – Predefined Specification



84



## EP Adapter – Inline Specification



82



## EP Adapter Example

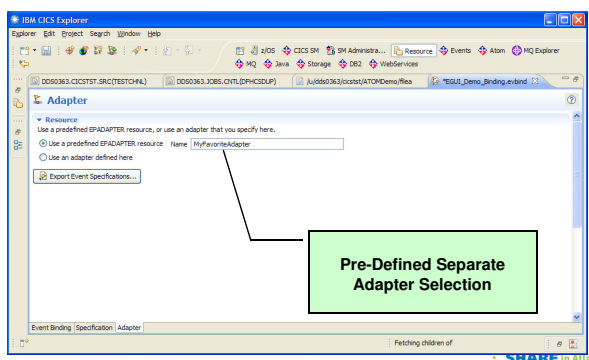


- Build a System Event to monitor the status of VSAM File FILEA
  - Use a predefined adapter called FileaMonAlerts
- ☀️ Build an External EP Adapter that can be used by other Events
  - Include it in with our System Event we just built - FileaMon

85



## EP Adapter – Predefined Specification



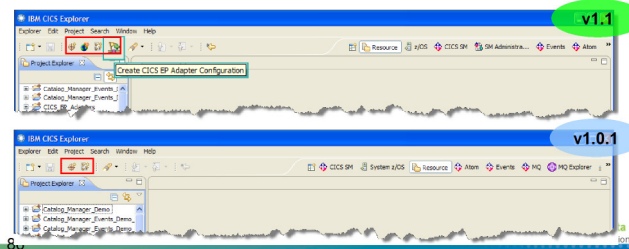
83



## EP Adapter

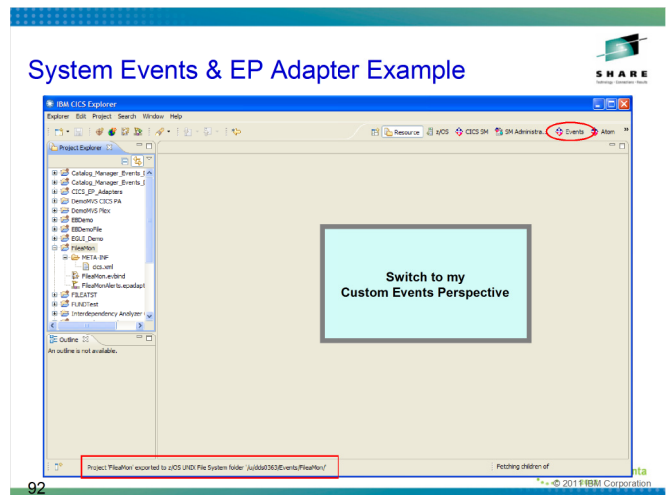
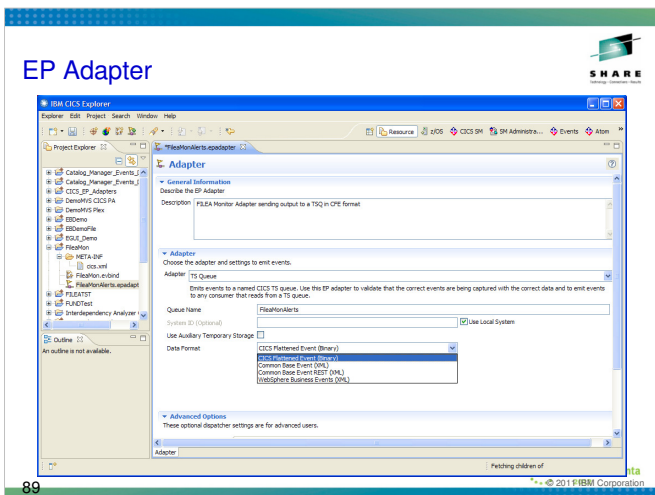
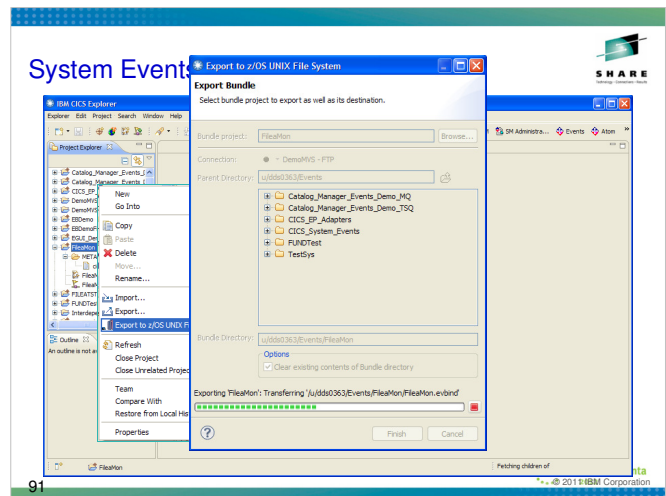
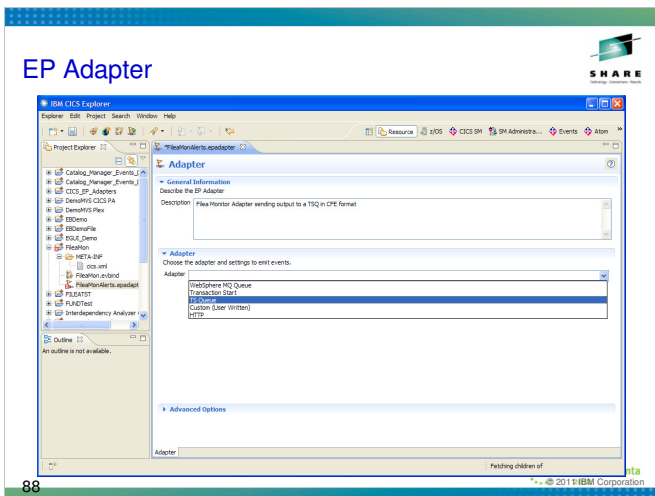
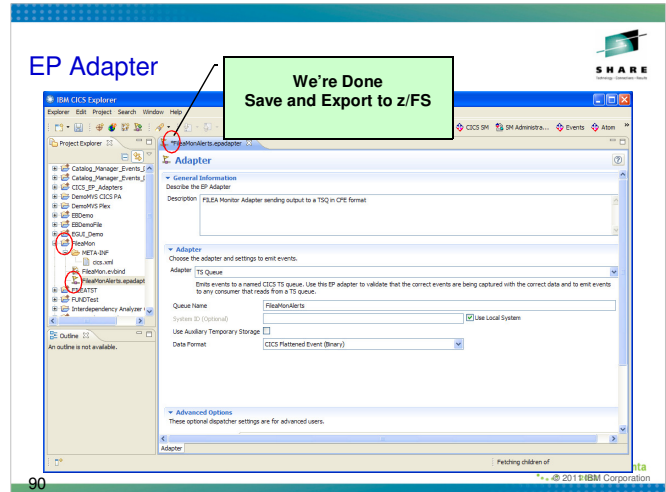
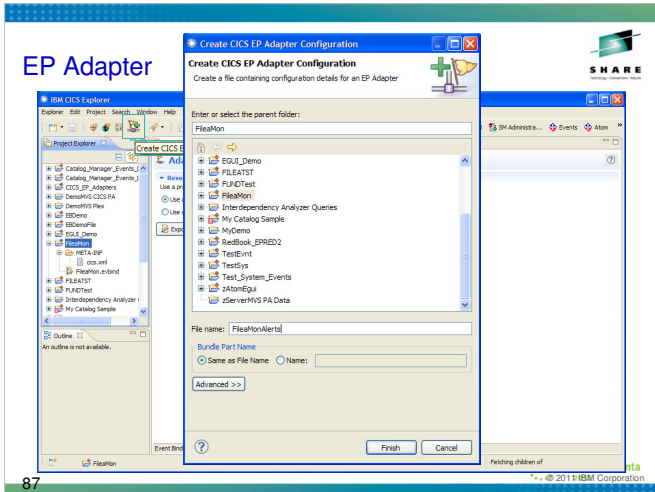


- New Wizard buttons in the Resource Perspective
  - EP Adapter Configuration
    - Inline Adapter Options
    - Predefined Adapter Options
  - Atom Configuration File



86









## System Events & EP Adapter – Bundle Parts



**Bundle Parts View Shows FileMonAlerts epadapter**

99

## System Events & EP Adapter Example



**Switching to the CICS SM Perspective In the Files View CLOSE FILEA to kick off our event**

102

## System Events & EP Adapter – Event Bindings



**Event Bindings View shows the FileMonAlerts Event Binding Pointing to the FileMonAlerts EP Adapter**

100

## System Events & EP Adapter Example



**Switch to the TS Queues View Shows FileMonAlerts Queue was created**

103

## System Events & EP Adapter – EP Adapters



**CAUTION Notice I'm using CASE Sensitive Names**

**EP Adapters View shows the FileMonAlerts EP Adapter Pointing to a TSQ named FileMonAlerts**

101

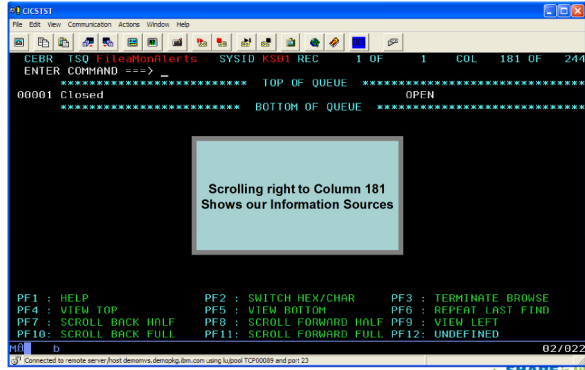
## System Events & EP Adapter Example Results



**Browsing FileMonAlerts Shows our System Event in CFE Format**

104

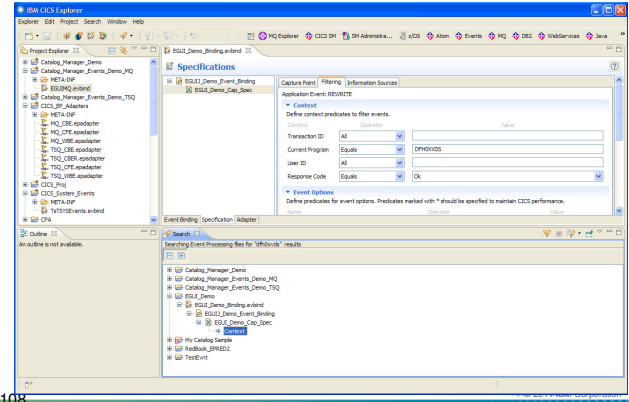
## System Events & EP Adapter Example Results



105

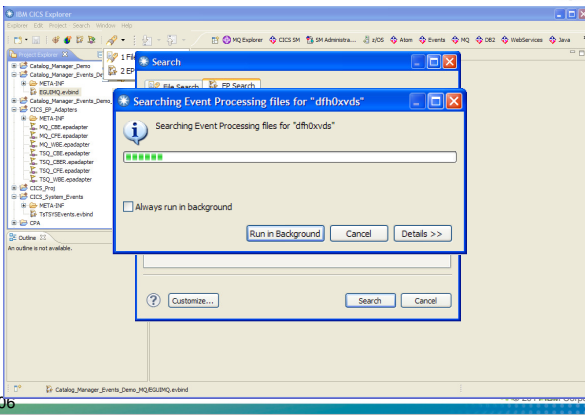


## EP Search



108

## EP Search



106

## EP Emission Mode Selection

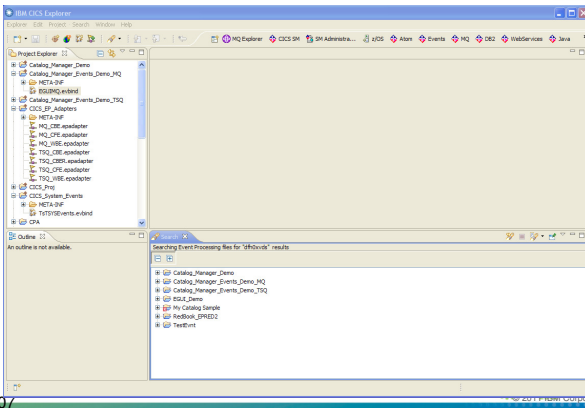


- New Synchronous emission mode option on the EP adapter
  - When Synchronous emission is used event emission is assured
  - Causes events to be formatted and emitted as part of the capturing UOW
  - If the event fails to be emitted the capturing UOW will be backed out at syncpoint and its transaction is abended with ASP7

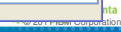
109



## EP Search



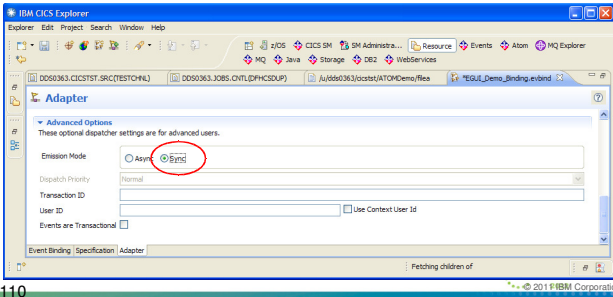
107



## EP Emission Mode Selection



- You can assure emission of an event by using an EP adapter with synchronous emission mode and the appropriate transaction mode



110

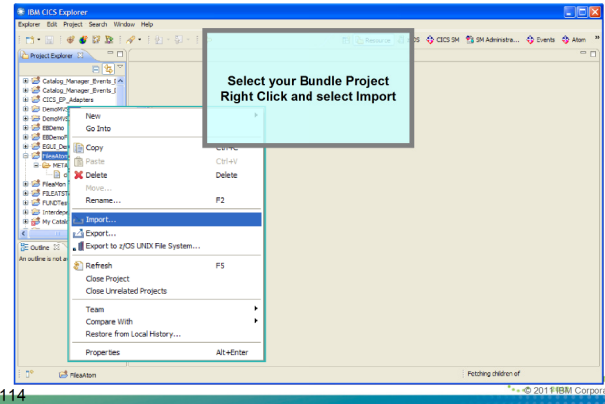


## Event Bindings Created with v1.1

- If you create an event binding using CICS Explorer version 1.1.0, you must not modify the event binding using an earlier version of CICS Explorer
- Modifying the event binding with an earlier version of CICS Explorer might result in loss of data
- You can however modify an event binding that was created on an earlier version of CICS Explorer, with a later version of CICS Explorer

111

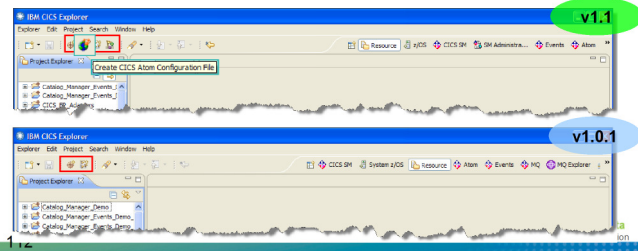
## XML Transform Binding via CICS Explorer



114

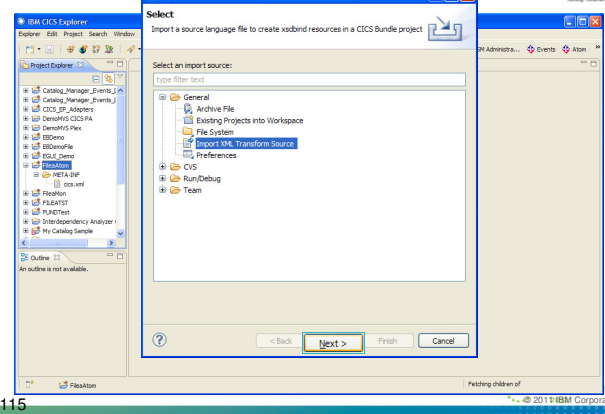
## Atom

- New Wizard buttons in the Resource Perspective
  - Atom Configuration File
  - EP Adapter Configuration



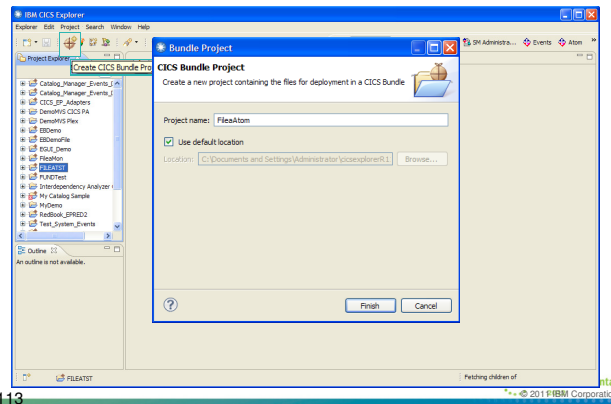
112

## XML Transform Binding via CICS Explorer



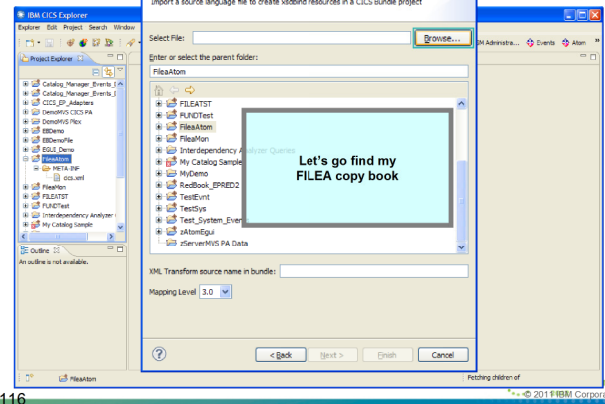
115

## XML Transform Binding via CICS Explorer

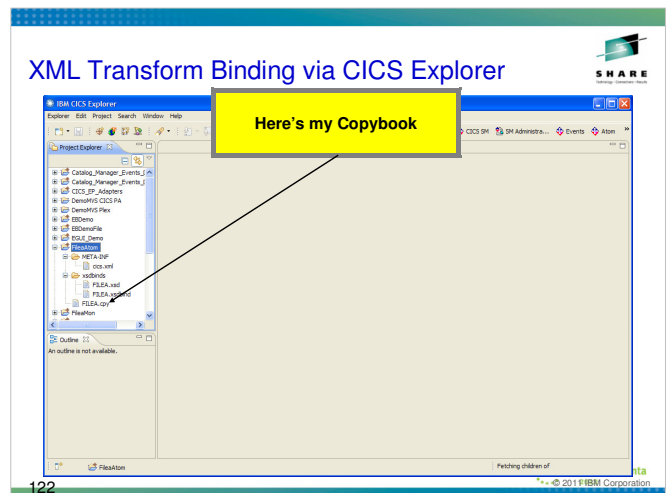
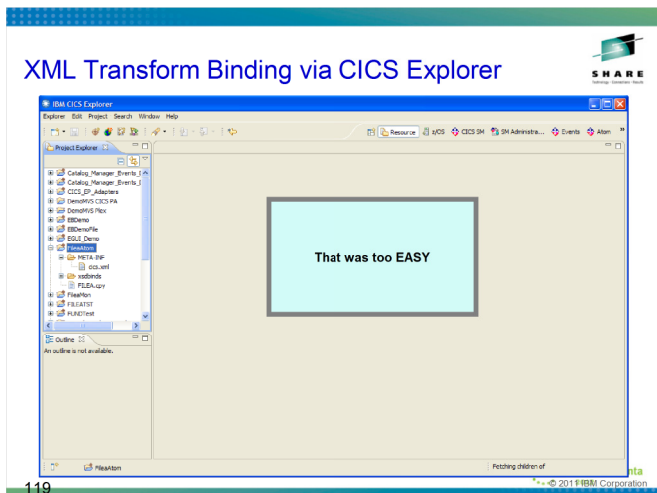
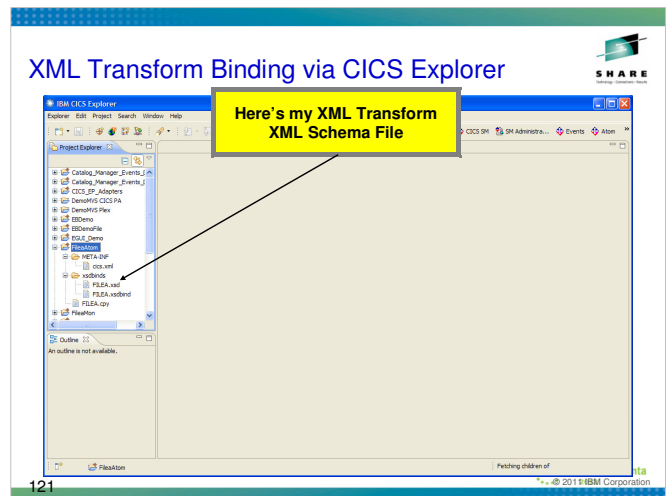
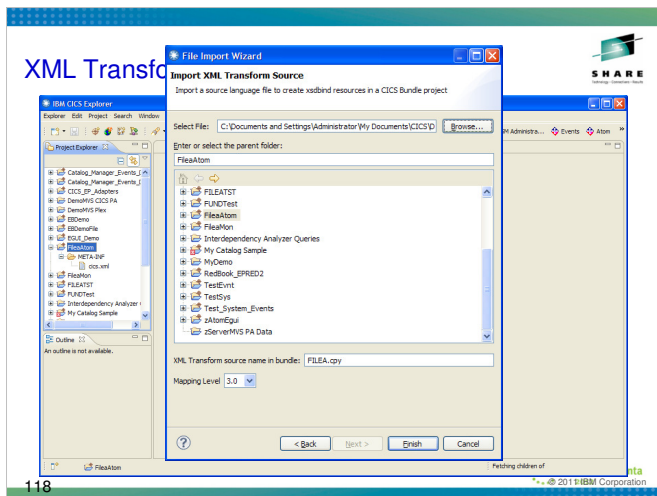
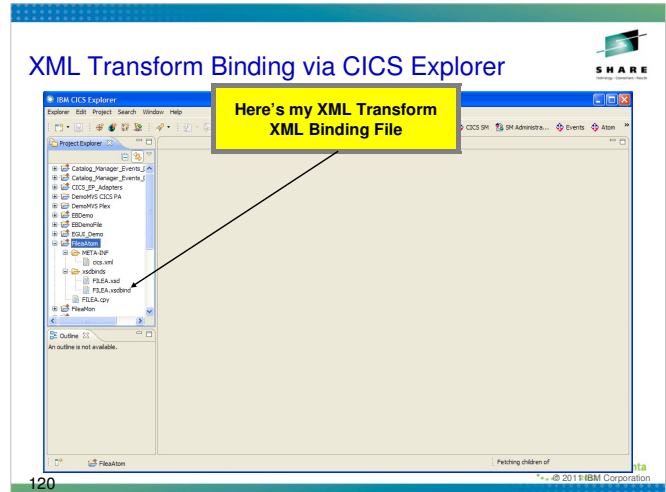
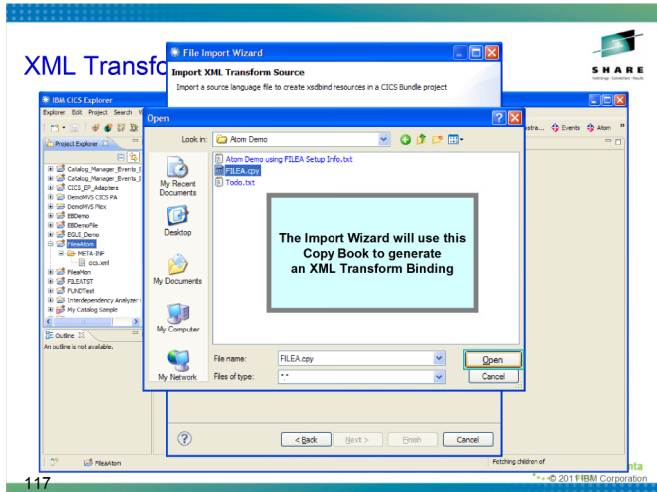


113

## XML Transform Binding via CICS Explorer



116



## XML Transform Binding via CICS Explorer

Double Clicking the Manifest File shows how it has been Updated with the XML Transform

```
<file name='FILEA' type='http://www.ibm.com/xml/soap/csic/soap/DOCTRANSFORM' path='webbind' />
```

123

## Atom Feed Creation via CICS Explorer

The FilesAtom Configuration file has been created and you are in the Atom Configuration Editor

126

## Atom Feed Creation via CICS Explorer

New CICS ATOM Configuration

Atom Configuration File

File name must be specified

Parent Folder: FilesAtom

File name:

Service Type:  COLLECTION  FEED

Feed Title:

Entry Title:

Resource Type:  FILE  PROGRAM  TSQUEUE

Resource Name:

Default URI:

XML Transform Name:

Finish Cancel

124

## Atom Feed Creation via CICS Explorer

Make any Adjustments

127

## Atom Feed Creation via CICS Explorer

New CICS ATOM Configuration

Atom Configuration File

Create a new atom configuration and then edit it

Parent Folder: FilesAtom

File name: FilesAtom

Service Type:  COLLECTION  FEED

Feed Title: CICS v4.2 Example Atom Feed of FILEA

Entry Title: Atom Entry from FILEA

Resource Type:  FILE  PROGRAM  TSQUEUE

Resource Name: FILEA

Default URI: Atom/Files

XML Transform Name: FILEA

Finish Cancel

125

## Atom Feed Creation via CICS Explorer

Double Clicking the Manifest File shows how it has been Updated with the Atom Feed

```
<file name='FILEA' type='http://www.ibm.com/xml/soap/csic/soap/DOCTRANSFORM' path='webbind' />
```

128

## Atom Feed Creation via CICS Explorer



We're Done  
Let's Export to z/FS

129

## Atom Feed Creation via CICS Explorer



132

## Atom Feed Cr

### Export to z/OS UNIX File System



130

## Atom Feed Creation via CICS Explorer



Close the Editors and  
install the Bundle

133

## Atom Feed Creation via CICS Explorer



Switch to my  
Custom Atom Perspective

131

## Atom Feed Creation via CICS Explorer



Switch to my  
Custom Atom Perspective

134

## Atom Feed Creation via CICS Explorer

IBM CICS Explorer interface showing a list of Bundle Parts. The 'Bundle Parts' menu item is highlighted with a red circle. The list includes columns for Region, Bundle, Bundle-Part, Enable Status, Meta Data File, Part Class, and Part Type. A status bar at the bottom indicates: 'CICW060: Install of Bundle Definition 'FILEATOM' from 'CICW0955' into 'CICW0955' succeeded.

135

## Atom Feed Creation via CICS Explorer

IBM CICS Explorer interface showing the Bundle Parts View. The 'Bundle Parts' menu item is highlighted with a red circle. A text box overlay reads: 'Bundle Parts View Shows FileAtom Config File'. The Properties pane shows details for the selected bundle part.

138

## Atom Feed Creation via CICS Explorer

IBM CICS Explorer interface showing the TCP/IP Services View. The 'TCP/IP Services' menu item is highlighted with a red circle. A text box overlay reads: 'TCP/IP Services View Showing Connection Information'. The Properties pane shows details for the selected service.

136

## Atom Feed Creation via CICS Explorer

IBM CICS Explorer interface showing the Bundle Parts View. The 'Bundle Parts' menu item is highlighted with a red circle. A text box overlay reads: 'Bundle Parts View Shows FILEXML Transform'. The Properties pane shows details for the selected bundle part.

139

## Atom Feed Creation via CICS Explorer

IBM CICS Explorer interface showing the Bundle View. The 'Bundles' menu item is highlighted with a red circle. A text box overlay reads: 'Bundle View Shows FILEATOM Bundle'. The Properties pane shows details for the selected bundle.

137

## Atom Feed Creation via CICS Explorer

IBM CICS Explorer interface showing the URI Maps View. The 'URI Maps' menu item is highlighted with a red circle. A text box overlay reads: 'URI Maps View Shows Dynamically Created URI Map'. The Properties pane shows details for the selected URI map.

140

## Atom Feed Creation via CICS Explorer



Atom Services View Shows Atom Feed Information

141

## Atom Feed Testing via CICS Explorer



Internal Web Browser Shows A Successful Feed

144

## Atom Feed Creation via CICS Explorer



XML Transforms View Shows Binding Information

142

## Atom Feed Testing via Firefox



Firefox Browser Shows A Successful Feed

145

## Atom Feed Testing via CICS Explorer



Internal Web Browser Shows A Successful Feed

143

## Atom Feed Testing via Firefox



Internal Web Browser Shows A Successful Feed

146





## New SM Administration Perspective

IBM CICS Explorer v1.0.1

Active Workloads

CICS SM Administration

Name	Type	CMA5 Name	State	Routing
CICSAOR8	N.A.		INACTIVE	RANDUMP
CICSAOR1	LOCAL	CP5MCH1	ACTIVE	RANDUMP
CICSAOR2	LOCAL	CP5MCH1	ACTIVE	RANDUMP
CICSAOR3	N.A.		INACTIVE	RANDUMP
CICSAOR4	N.A.		INACTIVE	RANDUMP
CICSAOR5	LOCAL	CP5MCH1	ACTIVE	RANDUMP
CICSAOR6	LOCAL	CP5MCH1	ACTIVE	RANDUMP
CICSAOR7	LOCAL	CP5MCH1	ACTIVE	RANDUMP
CICSAOR9	LOCAL	CP5MCH1	ACTIVE	RANDUMP

153

## New SM Administration Perspective

IBM CICS Explorer v1.0.1

CICS SM Administration

Name	Type	CMA5 Name	State	Routing
CICSAOR8	N.A.		INACTIVE	RANDUMP
CICSAOR1	LOCAL	CP5MCH1	ACTIVE	RANDUMP
CICSAOR2	LOCAL	CP5MCH1	ACTIVE	RANDUMP
CICSAOR3	N.A.		INACTIVE	RANDUMP
CICSAOR4	N.A.		INACTIVE	RANDUMP
CICSAOR5	LOCAL	CP5MCH1	ACTIVE	RANDUMP
CICSAOR6	LOCAL	CP5MCH1	ACTIVE	RANDUMP
CICSAOR7	LOCAL	CP5MCH1	ACTIVE	RANDUMP
CICSAOR9	LOCAL	CP5MCH1	ACTIVE	RANDUMP

156

## New SM Administration Perspective

IBM CICS Explorer v1.0.1

CICS SM Administration

Name	Type	CMA5 Name	State	Routing
CICSAOR8	N.A.		INACTIVE	RANDUMP
CICSAOR1	LOCAL	CP5MCH1	ACTIVE	RANDUMP
CICSAOR2	LOCAL	CP5MCH1	ACTIVE	RANDUMP
CICSAOR3	N.A.		INACTIVE	RANDUMP
CICSAOR4	N.A.		INACTIVE	RANDUMP
CICSAOR5	LOCAL	CP5MCH1	ACTIVE	RANDUMP
CICSAOR6	LOCAL	CP5MCH1	ACTIVE	RANDUMP
CICSAOR7	LOCAL	CP5MCH1	ACTIVE	RANDUMP
CICSAOR9	LOCAL	CP5MCH1	ACTIVE	RANDUMP

154

## New SM Administration Perspective

IBM CICS Explorer v1.0.1

CICS SM Administration

Name	Type	CMA5 Name	State	Routing
CICSAOR8	N.A.		INACTIVE	RANDUMP
CICSAOR1	LOCAL	CP5MCH1	ACTIVE	RANDUMP
CICSAOR2	LOCAL	CP5MCH1	ACTIVE	RANDUMP
CICSAOR3	N.A.		INACTIVE	RANDUMP
CICSAOR4	N.A.		INACTIVE	RANDUMP
CICSAOR5	LOCAL	CP5MCH1	ACTIVE	RANDUMP
CICSAOR6	LOCAL	CP5MCH1	ACTIVE	RANDUMP
CICSAOR7	LOCAL	CP5MCH1	ACTIVE	RANDUMP
CICSAOR9	LOCAL	CP5MCH1	ACTIVE	RANDUMP

157

## New SM Administration Perspective

IBM CICS Explorer v1.0.1

CICS SM Administration

Name	Type	CMA5 Name	State	Routing
CICSAOR8	N.A.		INACTIVE	RANDUMP
CICSAOR1	LOCAL	CP5MCH1	ACTIVE	RANDUMP
CICSAOR2	LOCAL	CP5MCH1	ACTIVE	RANDUMP
CICSAOR3	N.A.		INACTIVE	RANDUMP
CICSAOR4	N.A.		INACTIVE	RANDUMP
CICSAOR5	LOCAL	CP5MCH1	ACTIVE	RANDUMP
CICSAOR6	LOCAL	CP5MCH1	ACTIVE	RANDUMP
CICSAOR7	LOCAL	CP5MCH1	ACTIVE	RANDUMP
CICSAOR9	LOCAL	CP5MCH1	ACTIVE	RANDUMP

155

## Dynamically Managing Workloads

### Removing a CICS Region From the Plex on the Fly

IBM CICS Explorer v1.0.1

Workload Target Status

Target Region	Workload	Target Region	State	Route	Count	Language	Share	Status	Minor Trans.	Use Rate
CICSAOR8	ACTIVE	1	6	2	0					
CICSAOR7	ACTIVE	1	6	2	0					
CICSAOR9	ACTIVE	1	6	2	0					

158

## Dynamically Managing Workloads



### Quiesce the workload from Region 8

IBM CICS Explorer

Perform Operation

QUIESCE operation will be performed on all items in the execution queue

Action Summary

Execution Queue:

Name	State	Object
QUIESCE	State	CICSAC08

Parameters: N/A

OK Cancel

## Dynamically Managing Workloads



### Region 8 Quiesced – Can now be ShutDown

IBM CICS Explorer

Perform Operation

QUIESCE operation will be performed on all items in the execution queue

Action Summary

Execution Queue:

Name	State	Object
QUIESCE	State	CICSAC08

Parameters: N/A

OK Cancel

## Dynamically Managing Workloads



### Quiesce Confirmation Box

IBM CICS Explorer

Perform Operation

QUIESCE operation will be performed on all items in the execution queue

Action Summary

Execution Queue:

Name	State	Object
QUIESCE	State	CICSAC08

Parameters: N/A

OK Cancel

## Dynamically Managing Workloads



### Switching to the CICS SM Perspective

IBM CICS Explorer

Perform Operation

QUIESCE operation will be performed on all items in the execution queue

Action Summary

Execution Queue:

Name	State	Object
QUIESCE	State	CICSAC08

Parameters: N/A

OK Cancel

## Dynamically Managing Workloads



### Quiesce Completion Box

IBM CICS Explorer

Perform Operation

QUIESCE operation will be performed on all items in the execution queue

Action Summary

Execution Queue:

Name	State	Object
QUIESCE	State	CICSAC08

Parameters: N/A

OK Cancel

## Dynamically Managing Workloads



### Region 8 is gone and the work continues with no Hiccups

IBM CICS Explorer

Perform Operation

QUIESCE operation will be performed on all items in the execution queue

Action Summary

Execution Queue:

Name	State	Object
QUIESCE	State	CICSAC08

Parameters: N/A

OK Cancel

## Java

### JVMServer DISABLE options

The screenshot shows the IBM CICS Explorer interface. At the top, there's a table for JVMServer configuration with columns for Region, Name, Enable Status, JVM Profile, and Install Time. Below this is a task monitoring table with columns for Region, Task ID, Transaction ID, Run Status, User ID, Principal Facility, Priority, Class Name, Suspend Time, Dispatcher TCB HWI, and Dispatcher TCB Me... The interface includes various menu options like 'Open', 'Discard', 'Enable', 'Disable', 'Pause Out', 'Purge', and 'Force Purge'.

166

A slide with the text "Thank you, Any Questions?" in a large, bold font. The background features abstract, colorful wave-like patterns in shades of blue, green, and black. The IBM logo and "SHARE" branding are visible in the top right corner.

## Summary

- Overview / History
- Install Information
- General
- z/OS
- Events
- Atom
- SM Administration
- Java
- Questions



167

A diagram titled "IBM CICS Explorer™" showing a central "CICS EXPLORER" logo surrounded by various tool categories. The categories include:
 

- PA: Threadsafe, File, CPU, Response Time analysis, Graphical and Sheet views
- TG: Daemon & Connection Status & Test
- MQ: Configuration Status Control, Test
- XE: Status Situations Topology
- RDz: Develop Test Etc
- FA: CICS, IMS, DB2, & z/OS Abend Reporting & Diagnosis
- IA: Execution Tree Dependencies, Queries, Command Flow
- DA: Deployment Discovery, Visualization, Automation & Control
- DT: CICS, IMS, DB2, & z/OS Application Debugging
- APA: CICS, IMS, DB2, & z/OS Observation Requests & Reporting
- CM: CRUD/Install History, Audit Backout Search, Compare
- SM: CRUD/Install Control, Filter Topology Events, ATOM
- S: CICS Transaction Server
- M: CICS Interdependency Analyzer
- IA: CICS Performance Analyzer
- PA: CICS Configuration Manager
- C: CICS Deployment Assistant
- M: CICS Transaction Gateway
- DA: CICS Transaction Gateway
- TG: CICS Transaction Gateway
- APA: Application Performance Analyzer
- FA: Fault Analyzer
- DT: Debug Tool
- MQ: WebSphere MQ
- XE: OMEGAMON XE for CICS
- RDz: Rational Developer for System z

 The diagram also includes links to [ibm.com/cics/tools](http://ibm.com/cics/tools) and [ibm.com/cics/explorer/download](http://ibm.com/cics/explorer/download).

170

## Google us or check us out at:

- [ibm.com/developerworks/cicsdev](http://ibm.com/developerworks/cicsdev)
- [facebook.com/IBMCICS](https://facebook.com/IBMCICS)
- [twitter.com/IBM\\_CICS](https://twitter.com/IBM_CICS)
- [youtube.com/cicsfluff](https://youtube.com/cicsfluff)
- [youtube.com/cicsexplorer](https://youtube.com/cicsexplorer)

- [themasterterminal.com](http://themasterterminal.com)
- [twitter.com/IBM\\_System\\_z](https://twitter.com/IBM_System_z)

CICS Explorer Forum [ibm.com/developerworks/forums/forum.jspa?forumID=1475&start=0](http://ibm.com/developerworks/forums/forum.jspa?forumID=1475&start=0)

CICS-L list Forum [listserv.uga.edu/archives/cics-l.html](http://listserv.uga.edu/archives/cics-l.html)



168

## Call to Action

- Learn more about CICS Explorer**
  - Read the [New CICS Explorer Redbook - SG24-7778](#)
  - Request a [CICS Smart Seminar](#) from your IBM account rep
- Start using CICS Explorer**
  - Download from <http://ibm.com/cics/explorer/download>
- Extend the value of the CICS Explorer**
  - Move to CICS TS V4.1 or V4.2
  - Add CICS Tools and other plug-ins
  - Build your own plug-ins

171

## CICS Explorer Redbook - SG24-7778

- This Redbook® focuses on the new CICS Explorer
- The first part of the Redbook overviews the CICS Explorer, along with all the CICS Tools plug-ins
- The second part of the Redbook focuses on different scenarios in which the CICS Explorer can be used, along with the CICS Tools plug-ins to resolve different problems
- <http://www.redbooks.ibm.com/redpieces/abstracts/sg247819.html>



172

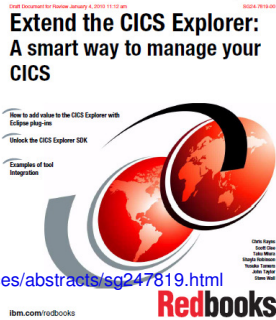
## Sources of Info

- **Web**
  - CICS Tools
    - Home page [ibm.com/cics/tools/](http://ibm.com/cics/tools/)
  - CICS Explorer
    - Home page [ibm.com/cics/explorer](http://ibm.com/cics/explorer)
    - Download page <http://ibm.com/cics/explorer/download>
  - CICS TS home page [ibm.com/cics](http://ibm.com/cics)
- **Demos and animations**
  - CICS Explorer demo - featuring Threadsafe Analysis using the CICS PA and CICS IA perspectives - <http://www.youtube.com/watch?v=Jk3YdvI8Ino>
  - CICS Explorer animation - <http://www.youtube.com/watch?v=NzWwUj5LW>
  - CICS Transaction Server in your SOA - Great source of links to more CICS ecosystem information - [ftp://ftp.software.ibm.com/software/http/cics/presentations/CICS\\_TS\\_in\\_your\\_SOA](ftp://ftp.software.ibm.com/software/http/cics/presentations/CICS_TS_in_your_SOA)

175

## CICS Explorer SDK Redbook - SG24-7819-00

- This Redbook® focuses on the new CICS Explorer SDK
- The first part of the Redbook gives an overview of the CICS Explorer, along with an overview of Plugins and Eclipse
- The second part of the Redbook focuses on the SDK and how to write a Plugin and how to Extend the Explorer via Plugins
- Two Demos are included
- <http://www.redbooks.ibm.com/redpieces/abstracts/sg247819.html>



173

Let's Build a Smarter Planet on System z



176

## CICS Communities and Information

- **CICS Transaction Server V4.2**
  - <http://ibm.com/cics/tserver/v42/>
- **CICS Explorer home page**
  - Remember this link [ibm.com/cics/explorer](http://ibm.com/cics/explorer)
- **CICS Explorer Forum**
  - <http://tinyurl.com/68bndw>
  - IBM developerWorks forum with FAQs, Links and resources, ISV Contributions, etc. Ask questions, suggest improvements, report problems, chat
- **New! CICS Hub on the Rational COBOL Café**
  - <http://ibm.com/software/rational/cafe/community/cobol/cics>
- **Twitter**
  - Subscribe to the [IBM\\_System\\_z\\_channel](#) to get CICS Explorer news flashes
- **CICS Blog**
  - Comment and opinion at [TheMasterTerminal.com](http://TheMasterTerminal.com)
- **CICS eNews**
  - Subscribe for news about CICS and related products
- **YouTube channels**
  - [CICS Explorer](#) - Videos, demos and other cool stuff
  - [CICSFluff](#) - Other CICS videos



174