



WebSphere Application Server PotPourri

David Follis, John Hutchinson, Mike Loos, Mike Stephen
IBM

August 11, 2011
Session Number 9487

1

© 2011, IBM Corporation

Trademarks

The following are trademarks of the International Business Machines Corporation in the United States and/or other countries.

CICS*	Parallel Sysplex*
DB2*	RACF*
GDPS*	System z9
Geographically Dispersed Parallel Sysplex	WebSphere*
HiperSockets	z/OS
IBM*	zSeries*
IBM eServer	
IBM logo*	
IMS	
On Demand Business logo	

* Registered trademarks of IBM Corporation

The following are trademarks or registered trademarks of other companies.

Java and all Java-related trademarks and logos are trademarks of Sun Microsystems, Inc., in the United States and other countries.

UNIX is a registered trademark of The Open Group in the United States and other countries.

Microsoft, Windows and Windows NT are registered trademarks of Microsoft Corporation.

SET and Secure Electronic Transaction are trademarks owned by SET Secure Electronic Transaction LLC.

* All other products may be trademarks or registered trademarks of their respective companies.

Notes:

Performance is in Internal Throughput Rate (ITR) ratio based on measurements and projections using standard IBM benchmarks in a controlled environment. The actual throughput that any user will experience will vary depending upon considerations such as the amount of multiprogramming in the user's job stream, the I/O configuration, the storage configuration, and the workload processed. Therefore, no assurance can be given that an individual user will achieve throughput improvements equivalent to the performance ratios stated here.

IBM hardware products are manufactured from new parts, or new and serviceable used parts. Regardless, our warranty terms apply.

All customer examples cited or described in this presentation are presented as illustrations of the manner in which some customers have used IBM products and the results they may have achieved. Actual environmental costs and performance characteristics will vary depending on individual customer configurations and conditions.

This publication was produced in the United States. IBM may not offer the products, services or features discussed in this document in other countries, and the information may be subject to change without notice. Consult your local IBM business contact for information on the product or services available in your area.

All statements regarding IBM's future direction and intent are subject to change or withdrawal without notice, and represent goals and objectives only.

Information about non-IBM products is obtained from the manufacturers of those products or their published announcements. IBM has not tested those products and cannot confirm the performance, compatibility, or any other claims related to non-IBM products. Questions on the capabilities of non-IBM products should be addressed to the suppliers of those products.

Prices subject to change without notice. Contact your IBM representative or Business Partner for the most current pricing in your geography.

Disclaimer

- The information contained in this documentation is provided for informational purposes only. While efforts were many to verify the completeness and accuracy of the information contained in this document, it is provided "as is" without warranty of any kind, express or implied.
- This information is based on IBM's current product plans and strategy, which are subject to change without notice. IBM will not be responsible for any damages arising out of the use of, or otherwise related to, this documentation or any other documentation.
- Nothing contained in this documentation is intended to, nor shall have the effect of, creating any warranties or representations from IBM (or its suppliers or licensors), or altering the terms and conditions of the applicable license agreement governing the use of the IBM software.
- Performance is based on measurements and projections using standard IBM benchmarks in a controlled environment. The actual throughput that any user will experience will vary depending upon considerations such as the amount of multiprogramming in the user's job stream, the I/O configuration, the storage configuration, and the workload processed. Therefore, no assurance can be given that an individual user will achieve throughput improvements equivalent to the performance ratios stated here.
- All customer examples cited or described in this presentation are presented as illustrations of the manner in which some customers have used IBM products and the results they may have achieved. Actual environmental costs and performance characteristics will vary depending on individual customer configurations and conditions.

David Follis

4

© 2011, IBM Corporation

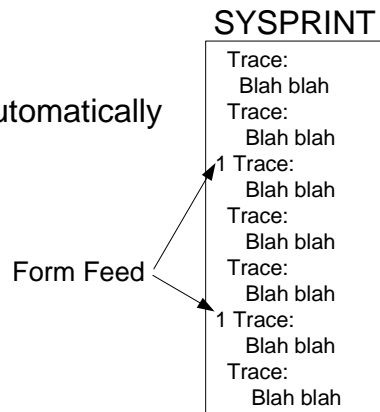
USS process Tag Data

- USS has an API to specify 'tag' data for a process
- WAS Version 8 calls this API in all regions
- Visible with the 'ps' command or 'DISPLAY OMVS,PID='
- Example strings:

```
WAS: WAS00/NDN1/BOC001/BBOS001 - CTL-AS - HH110309
WAS: WAS00/WAS00/BBODMGR/BBODMGR - CTL-DM - HH110309
WAS: WAS00/NDN1/BBON001/BBON001 - CTL-NA - HH110309
WAS: WAS00/WAS00/BBODMGR/BBODMGR - SR - HH110309
WAS: WAS00/NDN1/WAS00/ZWASAXXX - DAEMON - HH110309
```

Form Feed Controls

- JES2 spins output based on SEGMENT
- SEGMENT defined by page count
- Pages delimited by Form Feeds
- WebSphere issues Form Feeds automatically
- By time
 - ras_stdout_ff_interval
 - ras_stderr_ff_interval
- Or by volume
 - ras_stdout_ff_line_interval
 - ras_stderr_ff_line_interval
- Or, in **Version 8**, on command:
 - MODIFY server,FORMFEED



John Hutchinson

- Configuring “stack_products”
- ICH408I error message suppression
- Fixing shell scripts in the wrong code-page (ascii)

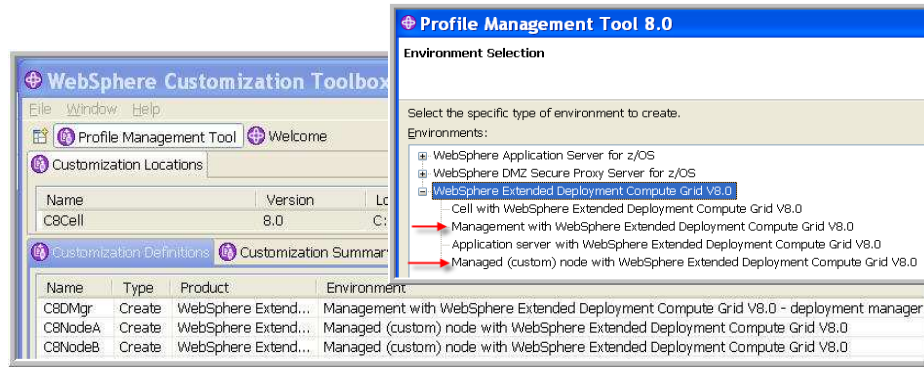
“Stack Product” Configuration Example

WebSphere Customization Toolkit (WCT) V8

Profile Management Tool (PMT or z/PMT) V8

Configuring:

- WebSphere AppServer V 8 with
- WebSphere Compute Grid V 8



8

© 2011, IBM Corporation



The WebSphere Customization Toolkit (WCT) Version 8 consists of a “Profile Management Tool” (PMT) Version 8 and the “Migration Management Tool” (MMT). There are some new features in the PMT V8.0 to enable you to create and augment a WebSphere Application Server cell with multiple Feature Packs and “Stacked Products” with a simplified set of job-streams.

In this example, WebSphere Application Server Version 8 is configured on a Deployment Manager and Managed nodes with a minimum number of panels, and a reduced set of generated customization jobs.

Stacked Jobs example for WASv8 & WCGv8

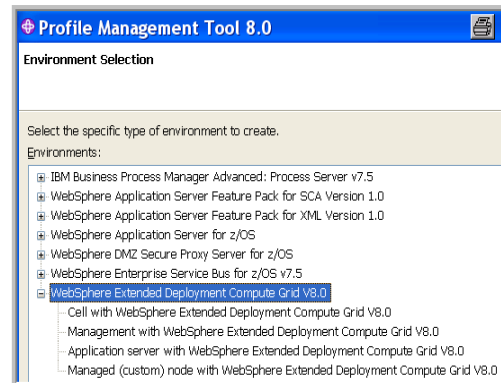


Stacked jobs:

- Create DMGr w/ WCGv8:
BBODHFSA & **BBOWWPF**
- Create EmptyNode w/ WCGv8:
BBOMHFSA & **BBOWWPFM**
- Federate: **BBOWMNAN**

Non-Stacked jobs:

- Create Deployment Mgr:
BBODHFSA & **BBOWWPF**
- Create Empty (Managed) Node:
BBOMHFSA & **BBOWWPFM**
- Federate: **BBOWMNAN**
- **Augment DMGr & Empty Node:**
EJCJAUGM & **EJCJAUGN**



Notice how the “Augment” jobs for Compute Grid are run separately from the Create jobs.

(In the case of Compute Grid, they can be done before or after federation.)

WCT V8 Stack Products Example: BPM



Stacked --- Not Stacked

Customization Locations			
Name	V...	Location	
W3_Cell	7.0	C:\Work\WASV7\WPS\W3_Cell	
W3_NewWPSv7	7.0	C:\Work\WASV7\WPS\NewW3Cell	

Customization Definitions			
Name	Type	Product	Environment
W3DMGR	Create	WebSphere Applica...	Cell (deployment manager and an application server)
W3DMGR_SCA	Augm...	WebSphere Applica...	Management with Feature Pack for SCA Version 1.0
W3DMGR_SDO	Augm...	WebSphere Applica...	Management with the SDO feature of the Feature Pack for SCA Version 1.0
W3DMGR_WPS	Augm...	IBM Business Proce...	Deployment manager with IBM Business Process Manager Advanced: Process Server 7.5 - deplo
W3DMGR_XML	Augm...	WebSphere Applica...	Management with Feature Pack for XML Version 1.0
W3NODEB	Create	WebSphere Applica...	Managed (custom) node
W3NODEB_SCA	Augm...	WebSphere Applica...	Managed (custom) node with Feature Pack for SCA Version 1.0
W3NODEB_SDO	Augm...	WebSphere Applica...	Managed (custom) node with the SDO feature of the Feature Pack for SCA Version 1.0
W3NODEB_WPS	Augm...	IBM Business Proce...	Managed (custom) node with IBM Business Process Manager Advanced: Process Server 7.5
W3NODEB_XML	Augm...	WebSphere Applica...	Managed (custom) node with Feature Pack for XML Version 1.0

... Or ...

Customization Locations			
Name	V...	Location	
W3_NewWPSv7	7.0	C:\Work\WASV7\WPS\NewW3Cell	
W8_WASB_WCG8	8.0	C:\Work\WASV8\W8_WASV8	

Customization Definitions			
Name	Type	Product	Environment
W3DMNODE	Create	IBM Business Proce...	Deployment manager with IBM Business Process Manager Advanced: Process Server 7.5 - deplo
W3NODEB	Create	IBM Business Proce...	Managed (custom) node with IBM Business Process Manager Advanced: Process Server 7.5

10

© 2011, IBM Corporation



Deployment Manager Configuration Jobs

- BBOSBRAK – Define RACF Users & Groups
- BBOSBRAM – Create Home Directories
- BBODBRAK – Create RACF Profiles & Permissions
- BBODCPY1 – Copy Proclib members
- BBODCFS – Create zFS
- BBODHFSA – Populate zFS
- BBOWWPFDF – Create Profiles

BPZAUGD – Augment profiles with SCA, SML, SDO & WPS

Custom Node Configuration Jobs

- BBOSBRAK – Define RACF Users & Groups
- BBOSBRAM – Create Home Directories
- BBOMBRAK – Define RACF Profiles
- BBOMCPY1 – Copy Procs
- BBOMCFS – Create zFS
- BBOMHFSA – Populate zFS
- BBOWWPFDM – Create Profiles
- BPZAUGN – Augment with SCA, XML, SDO & WP
- BBOWMNAN – Federate Empty Node

Mount-points for “**stack_products**”



WAS V7 & WCG V6.1.1 Product HFSes

/shared /zWebSphere /V7R0 <was7_smpe_install_root>
/zWebSphereXD /V6R1M1 <wcgv6_smpe_install_root>

WCG V8 Product HFS for use w/ WAS V7

/shared /zWebSphereCG /V8R0/**stack_products**/WCG <wcgv8_smpe_install_root>

WAS V8 with WCG V8 Product HFS (combined)

/shared /zWebSphere /V8R0/ <was8_smpe_install_root>
/stack_products/WCG

WAS V8 Configuration HFS with WCGv8

/wasv8config <or /wasv7config>
/cell
/node <symlinks_to_was8_smpe>
/AppServer <cell_home or root>
/stack_products
/WCG

Symbolic Links

11

© 2011, IBM Corporation



With WebSphere Application Server Version 7 and earlier, the Add-On or “Stacked” products such as Compute Grid and Process Server had their own SMPE-maintained HFS, and their own mount points.

The mount points for “stack products” in WAS V8, such as WCG V8, now use a “stack_products” sub-directory and reside in the same SMP/E HFS. (WCGV8 is also supported on WAS V7, so it can be ordered/installed separately in its own HFS.)

For WAS V8 & WCGV8 in the same Configuration file systems use a single symbolic link to point to the SMPE-maintained product files.

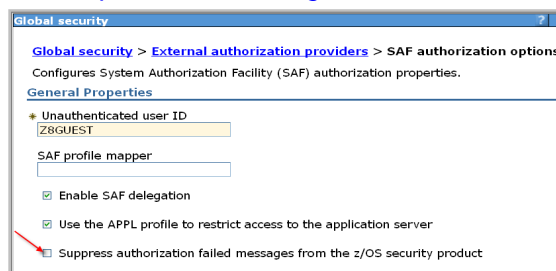
ICH408I error message suppression



EJBROLEs for Compute Grid: [lradmin](#), [lrsubmitter](#), [lrmonitor](#). If you are in the [lradmin](#) EJBROLE, you are not necessarily in [lrmonitor](#) EJBROLE even though users in the [lradmin](#) role have all the privileges of [lrmonitor](#).

- Users with READ access to [lradmin](#), but not [lrmonitor](#) will receive ICH408I error messages if that role is active.

Suppress it by setting the “**suppress authorization failed messages from the z/OS security product**” in [Global security > External authorization providers > Configure > SAF authorization options](#)



12

© 2011, IBM Corporation



These roles are checked to see what a user can and cannot do and set flags accordingly.

Even though a user in the [lradmin](#) role has all the privileges of [lrmonitor](#), the above call to check the [lrmonitor](#) role will generate an ICH408I msg.

```
boolean isAdmin = true;
if (request.isSecure() && !request.isUserInRole("lradmin"))
    isAdmin = false;

boolean isMonitor = true;
if (request.isSecure() && !request.isUserInRole("lrmonitor"))
    isMonitor = false;
```

Fixing shell scripts w/ code page problems



Sometimes shell scripts (or other files) are in the wrong code-page.

- (Maybe they were copied from a non-z/OS environment?)

The Notes page of this foil contains a sample shell script to:

- Search for all .sh files in the designated directory,
- Test to see if they are in the wrong code-page (ascii)
- Converts them to EBCDIC,
- Sets the permission bits to 755.

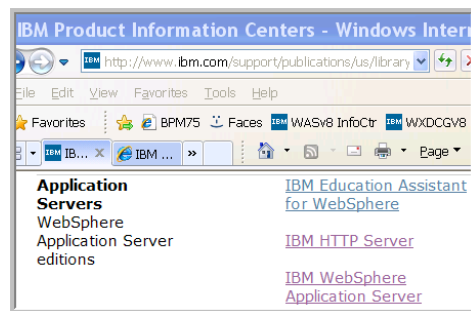
```
#!/bin/sh
# This shell script will convert all .sh shell scripts in a directory and all
# sub-directories from ascii to ebcdic.
# THIS TOOL IS PROVIDED "AS IS" WITHOUT ANY SUPPORT OR WARRANTY OF ANY KIND,
# EXPRESS OR IMPLIED. BY USING THESE SCRIPTS YOU EXPRESSLY ACKNOWLEDGE
# AND AGREE THAT THE USE OF THESE SCRIPTS IS AT YOUR SOLE RISK.
# NEITHER THE AUTHOR NOR THE IBM CORPORATION CAN BE HELD LIABLE FOR ANY ERRORS
# OR OTHER CONDITIONS OF ANY KIND WHICH MIGHT ARISE FROM THE USAGE OR THE OUTPUT
# OF THESE SCRIPTS. THESE SCRIPTS MAY BE USED BY ANYONE AT HIS/HER OWN RISK!
if [[ -z $1 ]]
then
    echo "Usage is fixsh.sh directory_name"
    exit 1
fi
directory=$1
if [[ ! -d $directory ]]
then
    echo "Directory $directory is not valid"
    exit 1
fi
flag="23"
for script in `find $directory -name "*.sh"`
do
    # echo $script
    od -An -txl $script | grep "23" >/dev/null
    if [ $? -eq 0 ]; then
        echo "Converting " $script
        iconv -f ISO8859-1 -t IBM-1047 <$script > /tmp/tmp_xlate && \
        cp /tmp/tmp_xlate $script
        chmod 755 $script
    else
        echo "Not ASCII: " $script
    fi
done
exit 0
```

IBM Product Information Centers



Do you have difficulty finding InfoCenters for various (WebSphere) Products? Here are a couple of suggestions:

- 1) Keep your own set of Bookmarks in a document on your desktop:
- 2) Use the "IBM Support Portal" at ibm.com/support/entry/portal/Overview
- 3) Use the "IBM Product Information Center" at ibm.com/support/publications/us/library/#software



Mike Loos

Changing MQ_INSTALL_ROOT



- A change to variable MQ_INSTALL_ROOT or
- A change to the path pointed to by it.
 - Causes requirement to start server twice.
- To avoid the second server restart...
 - APAR PK57900 (7.0.0.1)
 - New variable:
[MQ_CLEAR_MQ_FROM_OSGI_CACHE_ON_SHUTDOWN](#)
 - Set to True.

16

© 2011, IBM Corporation



ERROR DESCRIPTION: (from APAR PK57900)

If an external WebSphere MQ installation pointed to by MQ_INSTALL_ROOT is updated while application servers are stopped, and that update contains a change to the number of Java or native libraries included in the WebSphere MQ JMS client (or the MQ_INSTALL_ROOT itself is changed), application servers may log WMSG1612E or WMSG1614E messages during startup. When an application attempts to lookup a WebSphere MQ JNDI resource it is thrown an exception with message WMSG2002E or WMSG2003E.

A second restart of the application servers is required in order for applications to be able to lookup WebSphere MQ messaging provider JNDI resources and perform messaging.

LOCAL FIX:

Manually run osgiCfgInit between shutdown and startup of the application server.

FRCA Caching from the Control Region



- Two methodologies:
 - By application.
 - Each application sets up a cachespec.xml file and includes it in its WEB-INF directory.
 - Globally.
 - One cachespec.xml file included in the /wasv8config/s8cell/s8nodea/AppServer/profiles/default/properties directory.
- Set up for the server is the same in either case.

18

FRCA Caching Server Setup



Application servers > s8sr01c > Dynamic cache service > External cache group

Use this page to define sets of external caches that are controlled by WebSphere Application Server on web servers, such as IBM Edge Server and IBM HTTP Server.

Preferences

New... Delete

Select	Name	Type
<input type="checkbox"/>	ExternalCache	Not shared

Total: 1

Application servers > s8sr01c > Dynamic cache service > External cache group > FRCA

Use this page to define sets of external caches that are controlled by WebSphere Application Server on web servers, such as IBM HTTP Server.

Configuration

General Properties

Name: FRCA

Additional Properties

External cache group members

Apply OK Reset Cancel

Application servers > s8sr01c > Dynamic cache service > External cache group > FRCA > External cache group members

A single external cache that WebSphere Application Server controls.

Preferences

New... Delete

Select	Address	Adapter bean name
<input type="checkbox"/>		

None

Total: 0

19

© 2011, IBM Corporation



FRCA Caching Server Setup



[Application servers](#) > [s8sr01c](#) > [Dynamic cache service](#) > [External cache group](#) > [FRCA](#) > [External cache group members](#) > [New...](#)

A single external cache that WebSphere Application Server controls.

Configuration

Click this first...

General properties

☒ Advanced Fast Path Architecture (AFPA)

Adapter bean name
com.ibm.ws.cache.servlet.Afpa

Port
50077

New port. Could be 0 to use an ephemeral port or you can specify one from within the server's port range.

Fast Response Cache Accelerator

☒ Enable fast response cache accelerator

Make sure you check this box.

Cache size
102400000 bytes

Max entry size
1000000 bytes

Stack name

If you have more than one TCP/IP stack, you'll need to specify this...

Transaction class

⚠ Disk offload caching not enabled. When fast response cache accelerator is enabled, it is highly recommended you also enable disk caching offload. You can enable it by selecting the 'Enable disk offload' option on the [dynamic cache service](#) panel.

Click OK. Save and Synchronize.

FRCA Caching, cachespec.xml

This cache-entry in the cachespec.xml will cache ALL static content in FRCA

```
<?xml version="1.0" ?>
<!DOCTYPE cache SYSTEM "cachespec.dtd">
<cache>
  <!-- Cache Entry for the File Serving Servlet
  Will cache all static content in the web application -->
  <cache-entry>
    <class>static</class>
    <name>com.ibm.ws.webcontainer.servlet.SimpleFileServlet.class</name>
    <cache-id>
      <component id="" type="pathinfo">
        <required>true</required>
      </component>
    <timeout>300</timeout>
    </cache-id>
    <property name="ExternalCache">FRCA</property>
  </cache-entry>
</cache>
```

This entry must match the External Cache Group name.

Mike Stephen

Speaking of FRCA



APAR PM43864

OOM UNDER HEAVY LOAD WITH SERVLET CACHING
ENABLED AND FRCA DISABLED

If servlet caching is enabled but FRCA is disabled or misconfigured, the controller region may abend under heavy load with an OOM. An examination of the JVM heap will show many leaked byte arrays which are filled with HTTP response text.

Fix expected in 7.0.0.21 and 8.0.0.2 (January, 2012)

Versions, Dates, and Service Levels...



	GA	End of Marketing	End of Support
Version 6.0	3/25/2005	2/23/2009	9/30/2010
Version 6.1	6/30/2006	7/25/2011	9/30/2012
Version 7	9/26/2008		
Version 8	6/17/2011		

- End of Service announced for V6.1
- GA of Version 8
- Service level naming convention change:
 - V6.1 and V7 – even numbers z/OS only, odd numbers common
 - V8 – all levels are common (no more z/OS only levels)

Wrapup

WebSphere Application Server Sessions



Day	Time	#	Title	Speaker	Room
Wednesday	3:00	9483	Using IBM's New Cross-Platform Installer on z/OS	Mierzejewski	Oceanic 5
Thursday	8:00	9482	WAS Version 8 – Overview	Follis	Europe 2
Thursday	9:30	9486	WAS Version 8 – Batch Update	Hutchinson	Europe 2
Thursday	11:00	9485	WAS Version 8 – New z/OS Exploitation/Differentiation Features	Follis	Europe 2
Thursday	1:30	9484	WAS Version 8 – High Availability Enhancements	Follis	Europe 2
Thursday	3:00	9488	WAS - Back to Basics Part 1	Loos	Europe 2
Thursday	4:30	9489	WAS - Back to Basics Part 2	Stephen	Europe 2
Friday	8:00	9490	WAS for z/OS - Level 2 Update	Stephen	Europe 2
Friday	9:30	9487	WAS for z/OS – PotPourri	Follis, Hutchinson, Loos, Mierzejewski, Stephen, etc.	Europe 2

26

© 2011, IBM Corporation

in Orlando
2011

Comments? Suggestions?

- Was this a good set of sessions?
- What did you like?
- What did you not like?
- Should we repeat these next time or consolidate?
- Should we keep the 'back to basics' sessions?
- Any sessions you would like to see?
- Any suggestions for the lab?

- Anyone else care to share any WAS on z/OS experiences?
- Any questions about anything?
- Any final suggestions/complaints/comments?
- Anything? Anybody?